

**MK-2000 ELECTRIC SERIES
MASONRY SAW
OWNER'S MANUAL,
OPERATING INSTRUCTION, &
PARTS LIST**

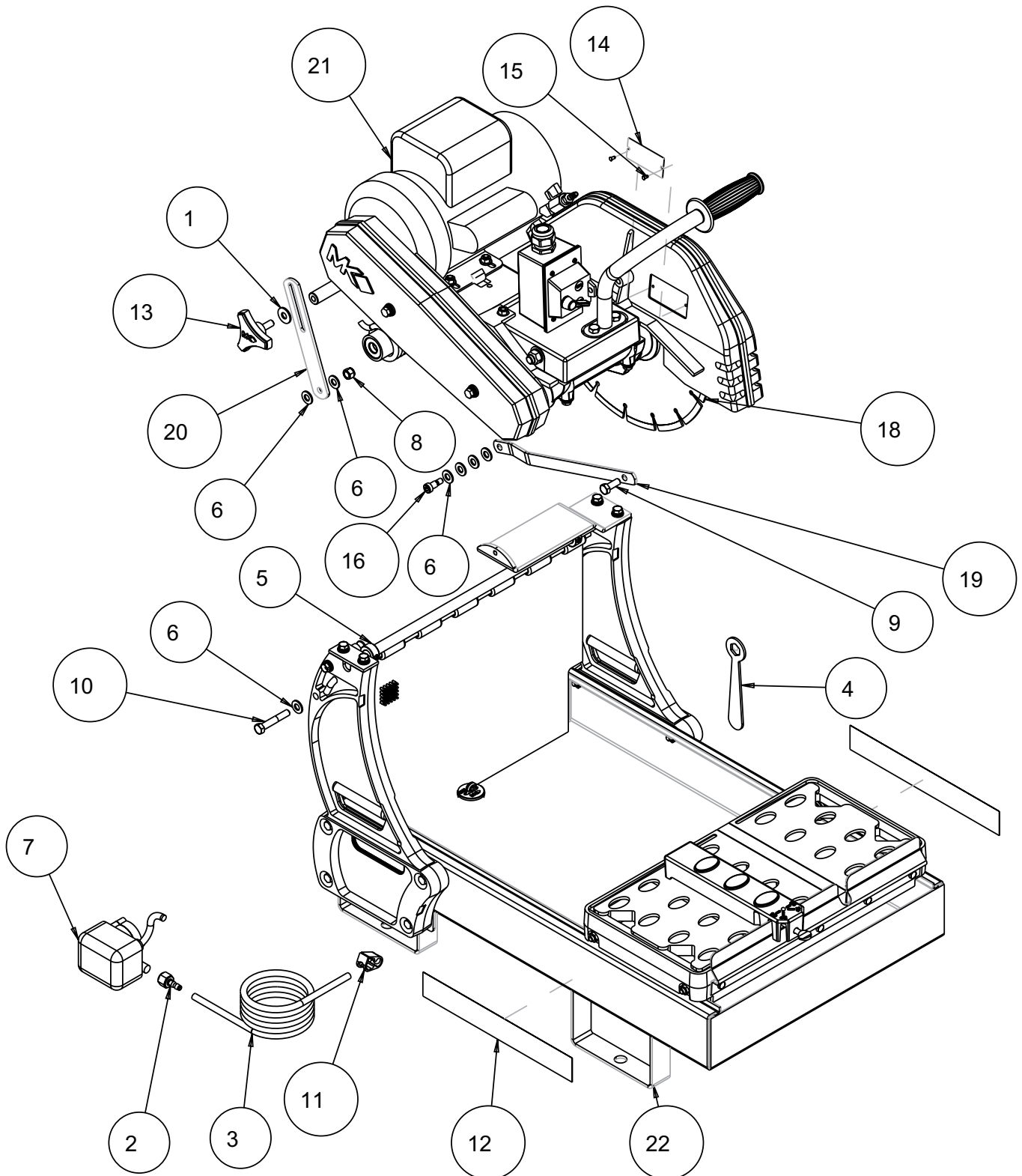


Revision 201	04.2015
Manual Part No. 156402	

MK-2002 PART # 150598
MK-2001SV PART # 161195

Caution: Read all safety and operating instructions before using this equipment. This owners manual **MUST** accompany the equipment at all times.

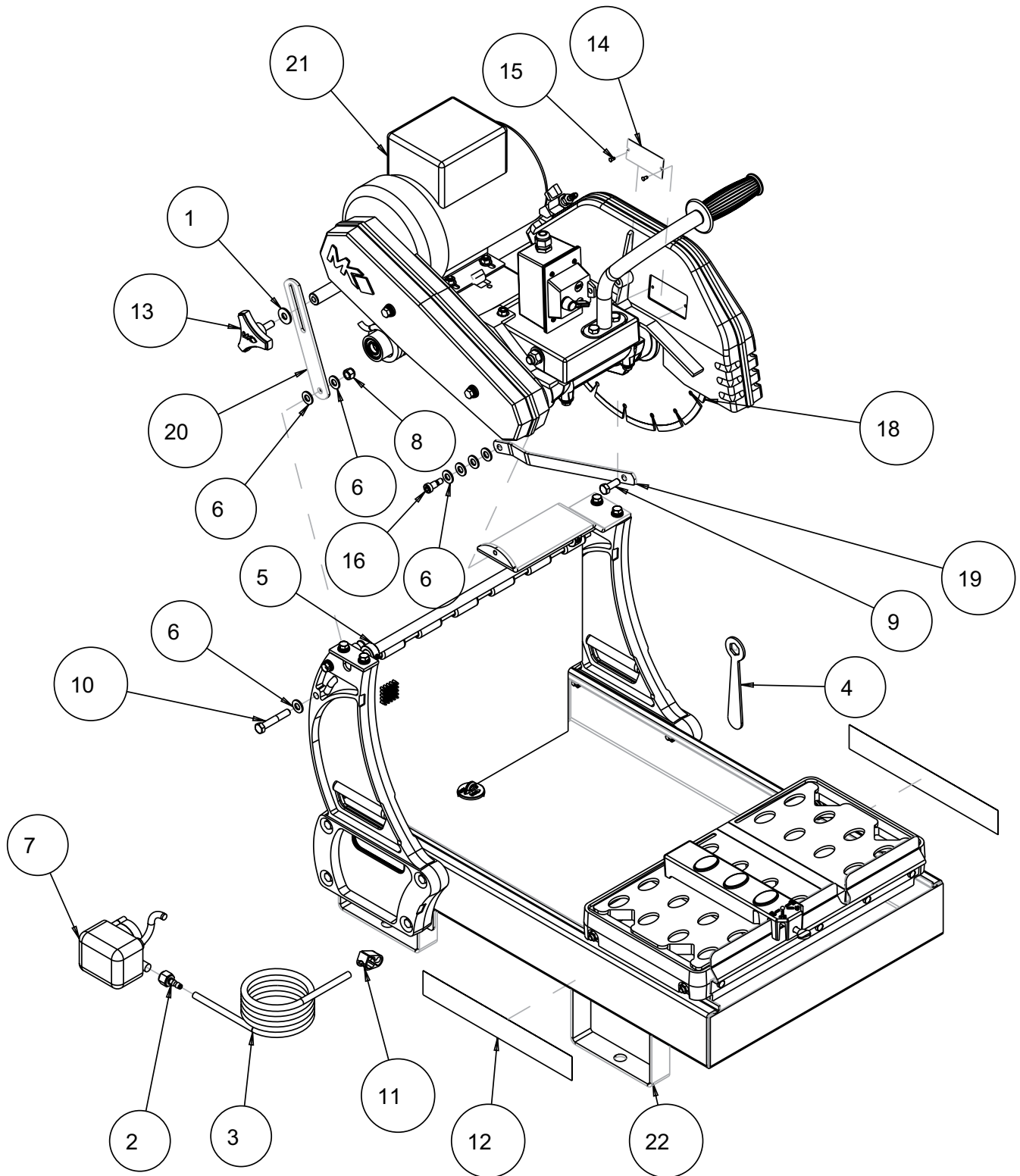
MK-2002 Saw Assembly Part # 150598



MK-2002 Saw Assembly Part # 150598

ITEM	DESCRIPTION	PART #	QTY.
1	WASHER, FLAT, USS, 3/8	101360	1
2	FITTING, PLASTIC, 1/4 FNPTX1/4 BARB	128397	1
3	HOSE, VINYL, 1/4X3/8 (32.0')	132951	1
4	WRENCH, 3/4 BOX END	134056	1
5	COLLAR, 1.13 ODX 625ID .5 WIDE	140012	2
6	WASHER, FLAT, SAE, 3/8	150923	7
7	PUMP, WATER, G-150A	151271	1
8	NUT, HEX, NYLK, 3/8-16	152505	1
9	SCREW, HEX HD CAP, 3/8-16 X 1	152507	1
10	SCREW, 3/8-16 X 2-1/4 HEX HEAD	153529	1
11	CLAMP, HOSE, 1/4-1/2 FLOW	154394	1
12	LABEL, MK BRICKSAW 12-1/2X1-3/4	155230	2
13	KNOB, TRI PLASTIC, 1"	156770-01	1
14	TAG, SERIAL NUMBER, BLANK	157500-RW	1
15	SCREW, DRIVE, RND HD, #7X5/16	157849	2
16	SCREW, SHOULDER 3/8 X 1/2	160078	1
17	MASONRY LABEL SHEET (NOT SHOWN)	166011	1
18	BLADE, CG, 14X125X1 10MM	166308	1
19	BAR, BLADE GUARD ADJ.	166602	1
20	BRACKET, HEIGHT ADJUSTMENT	166868	1
21	ASSY, CUTTING HEAD, 1.5 HP, 14"	170815	1
22	ASSY, FRAME, 2000	170818	1

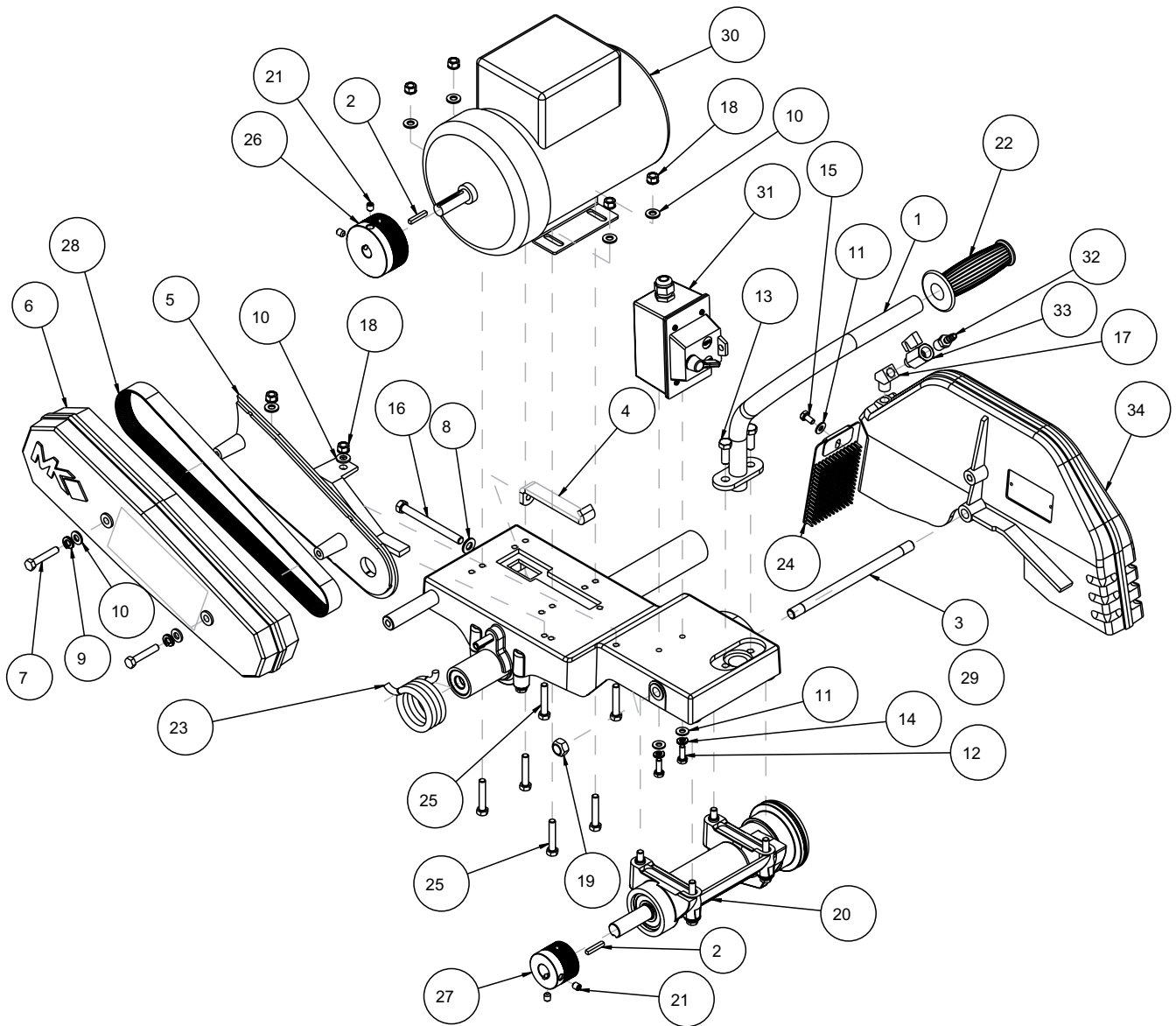
MK-2001SV Saw Assembly Part # 161195



MK-2001SV Saw Assembly Part # 161195

ITEM	DESCRIPTION	PART #	QTY.
1	WASHER, FLAT, USS, 3/8	101360	1
2	FITTING, PLASTIC, 1/4 FNPTX1/4 BARB	128397	1
3	HOSE, VINYL, 1/4X3/8 (32.0')	132951	1
4	WRENCH, 3/4 BOX END	134056	1
5	COLLAR, 1.13 ODX 625ID .5 WIDE	140012	2
6	WASHER, FLAT, SAE, 3/8	150923	7
7	PUMP, WATER, G-150A	151271	1
8	NUT, HEX, NYLK, 3/8-16	152505	1
9	SCREW, HEX HD CAP, 3/8-16 X 1	152507	1
10	SCREW, 3/8-16 X 2-1/4 HEX HEAD	153529	1
11	CLAMP, HOSE, 1/4-1/2 FLOW	152394	1
12	LABEL, MK BRICKSAW 12-1/2X1-3/4	155230	2
13	KNOB, TRI PLASTIC, 1"	156770-01	1
14	TAG, SERIAL NUMBER, BLANK	157500-RW	1
15	SCREW, DRIVE, RND HD, #7X5/16	157849	2
16	SCREW, SHOULDER 3/8 X 1/2	160078	1
17	MASONRY LABEL SHEET (NOT SHOWN)	166011	1
18	BLADE, CG, 14X125X1 10MM	166308	1
19	BAR, BLADE GUARD ADJ.	166602	1
20	BRACKET, HEIGHT ADJUSTMENT	166868	1
21	ASSY, CUTTING HEAD, 1.5 HP, 14"	170813	1
22	ASSY, FRAME, 2000	170818	1

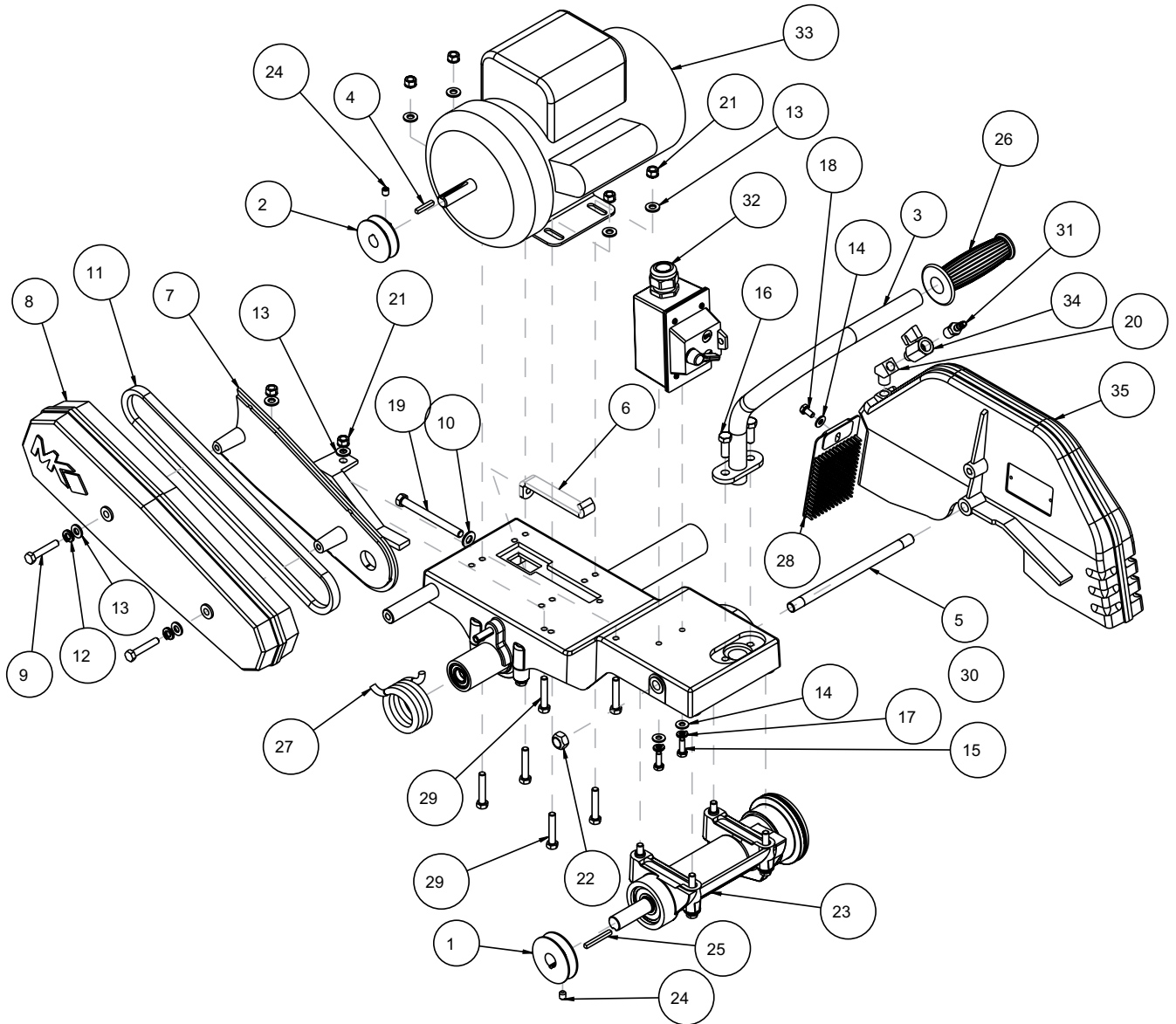
Assy. Cutting Head, 1.5 HP, 14" Part # 170813



Assy. Cutting Head, 1.5 HP, 14" Part # 170813

ITEM	DESCRIPTION	PART #	QTY.
1	HANDLE, BRICKSAW	139931	1
2	KEY, 3/16 SQ X 1-1/8	150344	2
3	STUD, BLD GUARD	150581	1
4	STRAP, MOTOR ADJ	150584	1
5	CASTING, 2000, BLT GRD INNR-COMP	150590	1
6	BLT GRD OUTR-COMP	150591	1
7	SCREW, HEX HD, CAP, 5/16-18X1-3/4	150919	2
8	WASHER, FLAT, SAE, 3/8	150923	1
9	WASHER, LOCK, SPLIT, 5/16	151747	2
10	WASHER, FLAT, SAE, 5/16	151754	8
11	WASHER, FLAT, SAE, 1/4	151915	3
12	SCREW, HEX HD, 1/4-20X3/4	152370	2
13	SCREW, HEX HD CAP, 3/8-16 X 1	152507	2
14	WASHER, LOCK, SPLIT, 1/4	152591	2
15	SCREW, 1/4-20 X 1/2 HEX HEAD	152608	1
16	BOLT, 3/8-16 X 4 HEX HEAD TAP	152678	1
17	ELBOW, 1/4 NPT X 45 STREET	153869	1
18	NUT, HEX, TW 5/16-18	153942	6
19	NUT, 1/2-13 HEX	153943	1
20	ASSY, ARBOR, MK-2000	154636	1
21	SCREW, 5/16-18 X 3/8 SOCKET HEAD SET	157083	4
22	GRIP, HANDLE 7/8 ID	158608	1
23	SPRING, TORSION, 50 DEG	160069	1
24	GUARD, SPLASH	160310	1
25	SCREW, 5/16-18 X 1-3/4 HEX HEAD MACHINE	160948	6
26	PULLEY, 10J28 X 5/8 BORE	160949	1
27	PULLEY, 10J19 X .75 BORE	160950	1
28	BELT, 10J340	160925	1
29	ASSY, MOTOR MOUNT, MK-2000	160966	1
30	MOTOR, 1.5HP 60HZ 1725R.P.M. 1 PH	161099	1
31	ASSY, SWITCH BOX, 30AMP, LTF11	161101	1
32	FITTING, PUSH ON HOSE 1/4 X 1/4 MALE	165183	1
33	VALVE, BALL 1/4"M X 1/4"F	231248	1
34	CASTING, 2000, BLD GRD-COMP	150579G	1

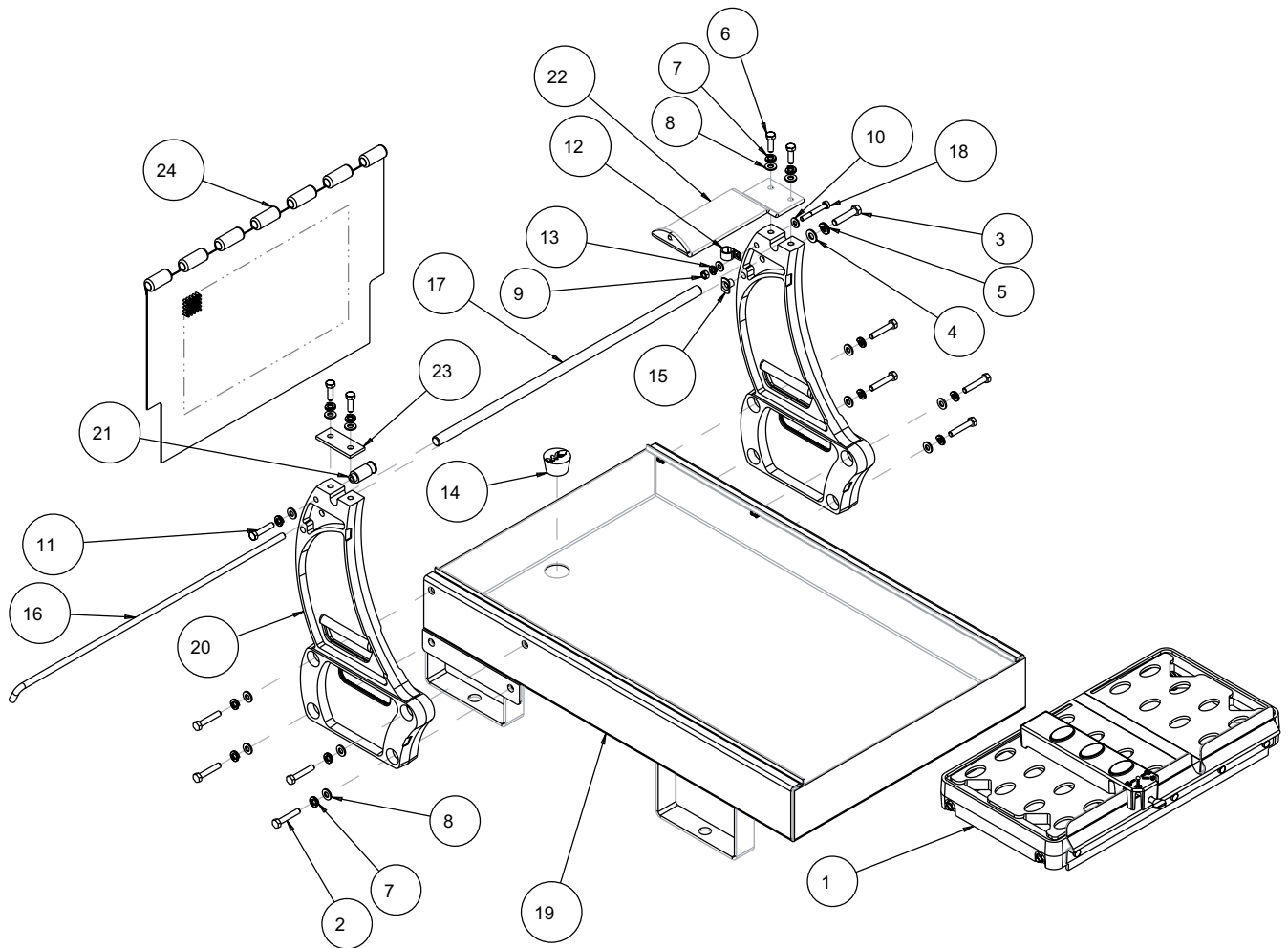
Assy. Cutting Head, 2 HP, 14" Part # 170815



Assy. Cutting Head, 2 HP, 14" Part # 170815

ITEM	DESCRIPTION	PART #	QTY.
1	PULLEY, 1A22 X 5/8" BORE	133140	1
2	PULLEY, 1A22 X 5/8" BORE	133157	1
3	HANDLE, BRICKSAW	139931	1
4	KEY, 3/16 SQ X 1-1/8	150344	1
5	STUD, BLD GUARD	150581	1
6	STRAP, MOTOR ADJ	150584	1
7	CASTING, 2000, BLTGRD INNR-COMP	150590	1
8	BLT GRD OTR-COMP	150591	1
9	SCREW, HEX HD, CAP, 5/16-18X1-3/4	150919	2
10	WASHER, FLAT, SAE, 3/8	150923	1
11	BELT, AX32	151723	1
12	WASHER, LOCK, SPLIT, 5/16	151747	2
13	WASHER, FLAT, SAE, 5/16	151754	8
14	WASHER, FLAT, SAE, 1/4	151915	3
15	SCREW, HEX HD, 1/4-20X3/4	152370	2
16	SCREW, HEX HD CAP, 3/8-16 X 1	152507	2
17	WASHER, LOCK, SPLIT, 1/4	152591	2
18	SCREW, 1/4-20 X 1/2 HEX HEAD	152608	1
19	BOLT, 3/8-16 X 4 HEX HEAD TAP	152678	1
20	ELBOW, 1/4 NPT X 45 STREET	153869	1
21	NUT, HEX, TW, 5/16-18	153942	6
22	NUT, 1/2-13 HEX	153943	1
23	ASSY, ARBOR, MK-2000	154636	1
24	SCREW, 5/16-18 X 3/8 SOCKET HEAD SET	157083	2
25	KEY, 3/16 X 3/16 X 1-3/4	157561	1
26	GRIP, HANDLE 7/8 ID	158608	1
27	SPRING, TORSION, 50 DEG	160069	1
28	GUARD, SPLASH	160310	1
29	SCREW, 5/16-18 X 1-3/4 HEX HEAD MACHINE	160948	6
30	ASSY, MOTOR MOUNT, MK-2000	160966	1
31	FITTING, PUSH ON HOSE 1/4 X 1/4 MALE	165183	1
32	ASSY, 30A SWITCHBOX, LTF21	166022	1
33	MTR, 2HP 115/230V60HZ, NO SWITCH	231095-RW	1
34	VALVE, BALL 1/4"M X 1/4"F	231248	1
35	CASTING, 2000, BLD GRD-COMP	150579G	1

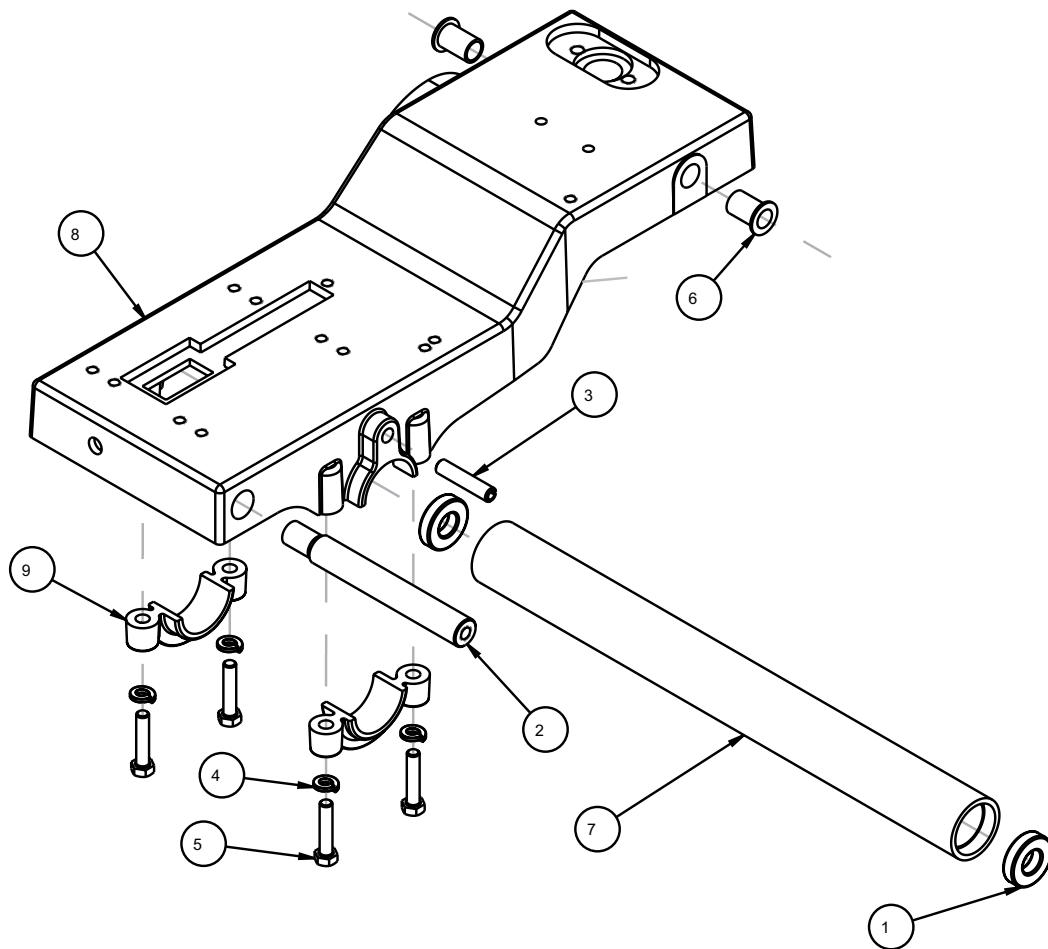
Assy. Frame Part # 170818



Assy. Frame Part # 170818

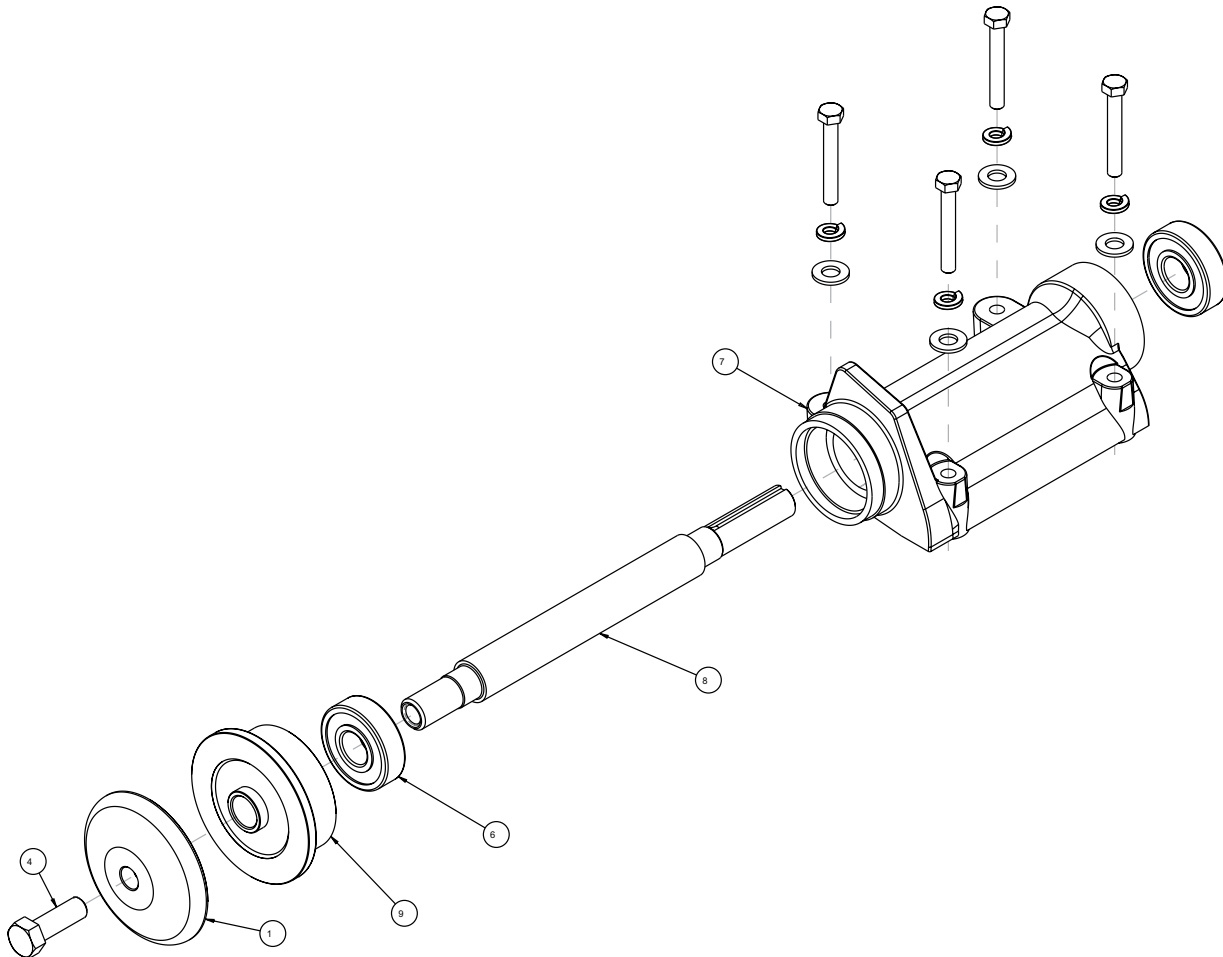
ITEM	DESCRIPTION	PART #	QTY.
1	ASSY, CONVYR CART	133082	1
2	SCREW, HEX HD, CAP, 5/16-18X1-3/4	150919	8
3	SCREW, HEX HD, 3/8-16 X 1-3/4	150920	1
4	WASHER, FLAT, SAE, 3/8	150923	1
5	WASHER, LOCK, SPLIT, 3/8	150925	1
6	SCREW, HEX HD, 5/16-18X1	151743	4
7	WASHER, LOCK, SPLIT, 5/16	151747	13
8	WASHER, FLAT, SAE, 5/16	151754	13
9	NUT, HEX, 1/4-20	151893	1
10	WASHER, FLAT, SAE, 1/4	151915	2
11	SCREW, 5/16-18 X 1-1/2 HEX HEAD MACHINE	152467	1
12	CLAMP, 1/2 CUSHION LOOP	152471	1
13	WASHER, LOCK, SPLIT, 1/4	152591	1
14	PLUG, RBBR DRAIN W/O HOLE	153439	1
15	NUT, WELD, SLAB. 3/8-16	153945	1
16	ROD, SPLASH CURTAIN	153956	1
17	SHAFT, PIVOT, 5/8	154147	1
18	SCREW, HEX HD 1/4-20 X 2	158282	1
19	WELDMENT, BASE FRAME	158845	1
20	POST (COMP)	158846	2
21	STUD, SPRING RETAINING	160066	1
22	BRACKET, STAY LEVEL CLIPPER PAV	160068	1
23	BRACKET, PIVOT SHAFT	160070	1
24	CURTAIN, SPLASH, MK-2000	160972	1

Motor Mount Part # 160966



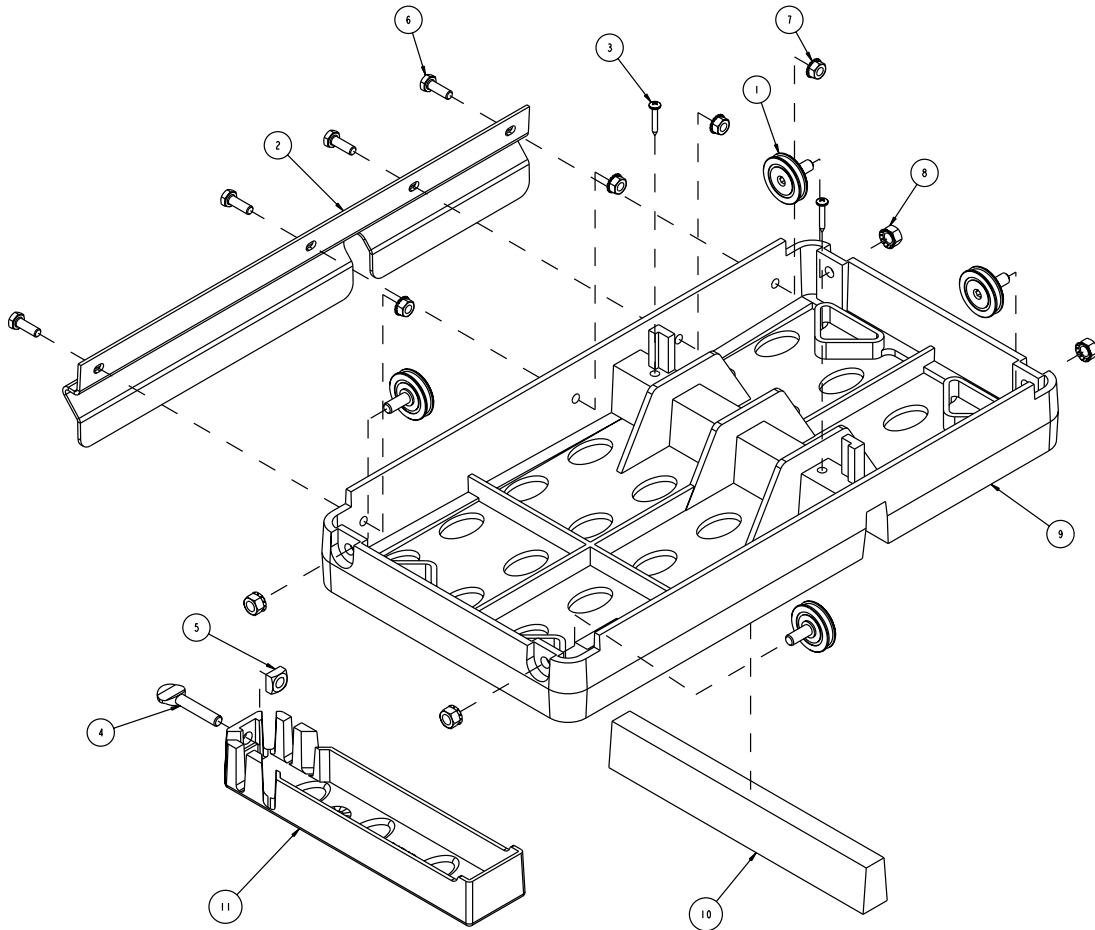
ITEM	DESCRIPTION	PART #	QTY.
1	BEARING, CUTTING HD PIV	140004	2
2	BAR, ADJUSTMENT	150585	1
3	PIN, SLOTTED SPRING, 3/8 X 1-3/4	151358	1
4	WASHER, LOCK, SPLIT, 5/16	151747	4
5	SCREW, 5/16-18 X 1-1/2 HEX HEAD MACHINE	152467	4
6	BUSHING, FLANGE, 1/2X5/8X1	156441	2
7	HOUSING, PIVOT SHAFT	157979	1
8	HEAD, CUTTING (COMP)	160346	1
9	CLAMP, CUTTING HEAD (COMP)	160397	2

Assy. Arbor Part # 154636

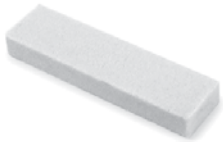







ITEM	DESCRIPTION	PART #	QTY.
1	FLANGE, OUTER	132290	1
2	WASHER, FLAT, SAE, 3/8	150923	4
3	WASHER, LOCK, SPLIT, 5/16	151747	4
4	SCREW, HEX HD 1/2-20X1-1/4	152122	1
5	SCREW, HEX, 5/16-18 X 2-1/4	153951	4
6	BEARING, ARBOR HOUSING	154594	2
7	CASTING, 2000/5000 ARBOR - COMP	154637	1
8	SHAFT, BLADE	154639	1
9	FLANGE, ARBOR, INNER	154640	1

Assy Table Part # 133082



ITEM	DESCRIPTION	PART #	QTY.
1	WHEEL, CONVEYOR CART	133090	4
2	STOP, BACK-CONVEYOR CART	134387	1
3	SCREW, PAN HD PHIL #8 X 1	151047	2
4	SCREW, THUMB 5/16-18 X 1- 1/2	151155	1
5	NUT, SQUARE 5/16 - 18	151156	1
6	SCREW, 1/4 -20 X 3/4 HEX HEAD MACHINE	152370	4
7	NUT, HEX W/WSHR, 1/4 - 20	153941	4
8	NUT, HEX W/WSHR 5/16 - 18	153942	4
9	TABLE, D.C., COMP	158144	1
10	WOOD STRIP, TABLE INSERT	158283	1
11	CASTING, SQUARING ARM - COMP	231276	1

Item	Part #	Description	
1.	152792	Dressing Stick	
2.	128777	MK-10 Wet Cutting Refractory blade for brick	
3.	128652	MK-30 Supreme Grade Blade for Concrete Block	
4.	128744	MK-50 Supreme Grade Blade for Concrete Block	
5.	159629	MK-414PB Supreme Grade Penter Blade for Hard Brick	
6.	153331	Folding Saw Stand	

ORDERING INFORMATION

You may order MK Diamond products through your local MK Diamond distributor or, you may order direct from MK Diamond.

When ordering direct from MK Diamond, please have the following information ready before calling:

- The Model Number of the saw
- The Serial Number of the saw
- Where the saw was purchased and when
- The Part Number for the part(s) being ordered
- The Part Description for the part(s) being ordered

NOTE: There is a \$25.00 minimum order when ordering direct from MK Diamond. A \$6.00 charge will be added to orders having a net billing value under \$50.00. All purchases must be made using VISA, MasterCard or American Express.

All parts may be ordered by calling toll free to – 800 421-5830 or 310 539-5221 and asking for Customer Service. For technical questions, call – 800 474-5594.

RETURN MATERIALS POLICY

To expedite the service relative to the return of a product purchased through MK Diamond, please observe the following:

NOTE: When returning all items, they must have been purchased within the previous twelve (12) months.

- Have the Model Number of the saw
- Have the Serial Number of the saw
- Have the location of where the saw was purchased
- Have the date when the saw was purchased
- Contact Customer Service for approval to return the item(s)
- Obtain a Returned Goods Number (RGA) authorizing the return
- Follow the packaging instructions in the following section
- Ensure your item(s) are prepaid to the destination

For returned items, call toll free to – 800 421-5830 or 310 539-5221 and ask for Customer Service. For technical questions, call – 800 474-5594 or 310 257-2845.

PACKAGING INSTRUCTIONS

- Remove the Cutting Head and Support Angle Assembly
- Dry the saw before shipping
- When packing, include the following: Saw, Diamond Blade, Blade Guard and Support Angle Assembly and Adjustable Cutting Guide (Other Accessories are not required)
- Package the unit in its original container or one of comparable size (do not ship the unit partially exposed)
- Ensure all parts are secured in the packaging to prevent moving

AUTHORIZED SERVICE CENTERS

For quicker repair time, you may contact MK Diamond Customer Service, toll free, at 800 421-5830 or 310 539-5221 for the Authorized Service Center closest to you or visit our web site at www.mkdiamond.com. For technical questions, call – 800 474-5594.

CONTACT

Please contact MK Diamond Products, Inc. Customer Service Department with any questions you might have regarding distributors, parts or service.

Telephone: **(800) 421-5830**

Fax: **(310) 539-5158**

E-mail: **Customer_Service@MKDiamond.com**

Customer Service Hours: **Monday through Friday, 6AM-4PM PST**

MK Diamond Products, Inc.

1315 Storm Parkway

Torrance, CA 90501

MK DIAMOND PRODUCTS, INC. LIMITED WARRANTY

MK DIAMOND PRODUCTS, INC. will guarantee every machine they build, to be free from defects in material and workmanship for (1) one year from date of purchase. The obligation of MK DIAMOND PRODUCTS, INC. under this warranty is limited to the repair or replacement of any parts which, under normal use, prove to be defective in material or workmanship. The parts involved or the unit in question should be returned to MK DIAMOND PRODUCTS, INC. or to a point designated by us, transportation prepaid.

This warranty does not obligate us to bear the cost of labor or transportation charges in connection with replacement or repair of defective parts. Likewise, it shall NOT apply to any unit which has been subjected to misuse, neglect or accident. This warranty does NOT apply to any machine which has been repaired or altered outside our factory.

This warranty does NOT obligate MK DIAMOND PRODUCTS, INC., with respect to items not of our manufacture, such as engines, motors, hydraulics, etc., which are subject to their own guarantees and warranties.

We shall in no event be liable for consequential damages or contingent liabilities arising out of failure of any equipment or parts to operate properly.

© COPYRIGHT 2015, MK DIAMOND PRODUCTS, INC. ALL RIGHTS RESERVED.

The MK Diamond logo is a registered trademark of MK Diamond Products, Inc. and may not be used, reproduced, or altered without written permission. All other trademarks are the property of their respective owners and used with permission.

MK Diamond may have patents, patent applications, trade marks, copyrights of other intellectual property right covering this product in this document.

This manual MUST accompany the equipment at all times. This manual is considered a permanent part of the equipment and should remain with the unit if resold.

The information and specifications included in this publication were in effect at the time of approval for printing.

MK-2000 SERIES
OWNER'S MANUAL, OPERATING
INSTRUCTIONS , & PARTS LIST



MK Diamond Products, Inc.

MK Diamond Products, Inc.
1315 Storm Parkway
Torrance, CA 90501

Toll-Free: (800) 421-5830
Phone: (310) 539-5221
Fax: (310) 539-5158
www.mkdiamond.com