



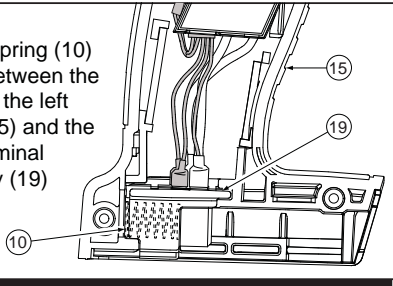
SERVICE PARTS LIST

BULLETIN NO.
54-24-2600

SPECIFY CATALOG NO. AND SERIAL NO. WHEN ORDERING PARTS		REVISED BULLETIN	DATE
M18 1/2" COMPACT HAMMER-DRILL			Mar. 2009
CATALOG NO. 2602-20	STARTING SERIAL NO. C15A	WIRING INSTRUCTION SEE REVERSE SIDE	

***NOTE:**

Compression spring (10) is positioned between the bottom/back of the left housing half (15) and the back of the terminal block assembly (19) as shown.



00 0

EXAMPLE:
Component Parts (Small #)
Are Included When Ordering
The Assembly (Large #).

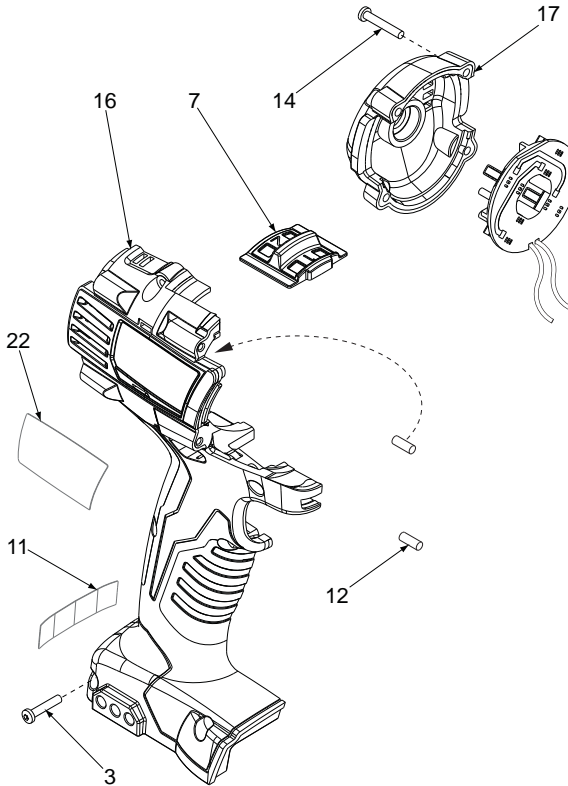
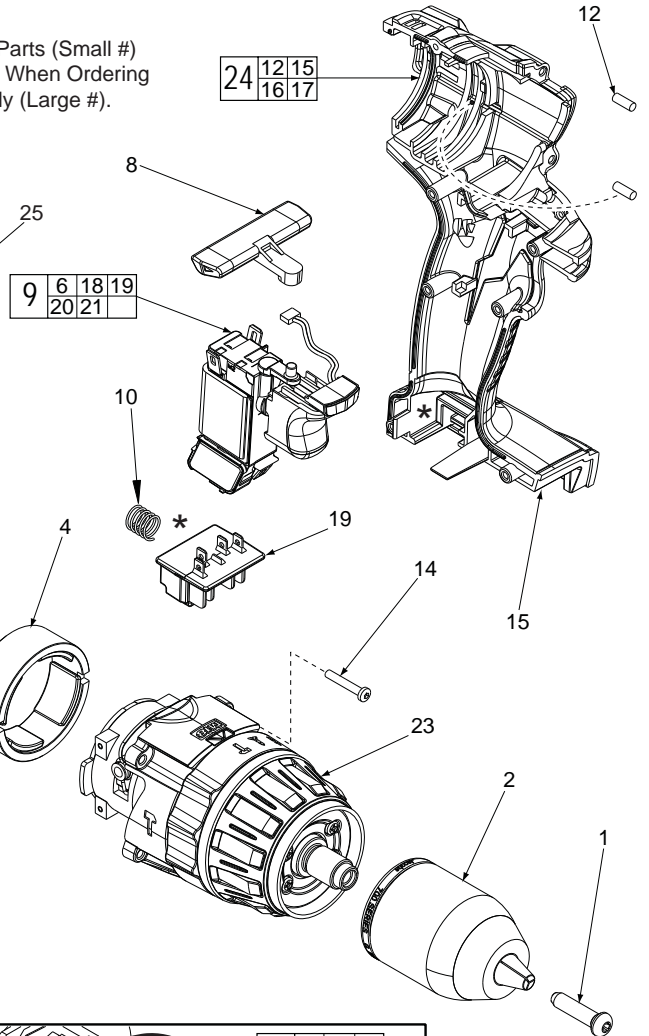
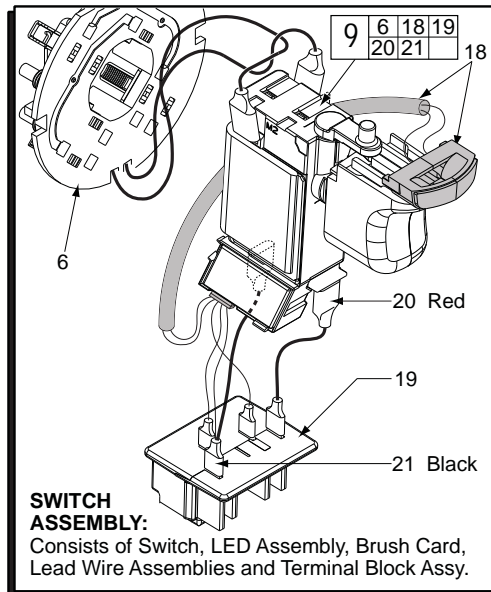
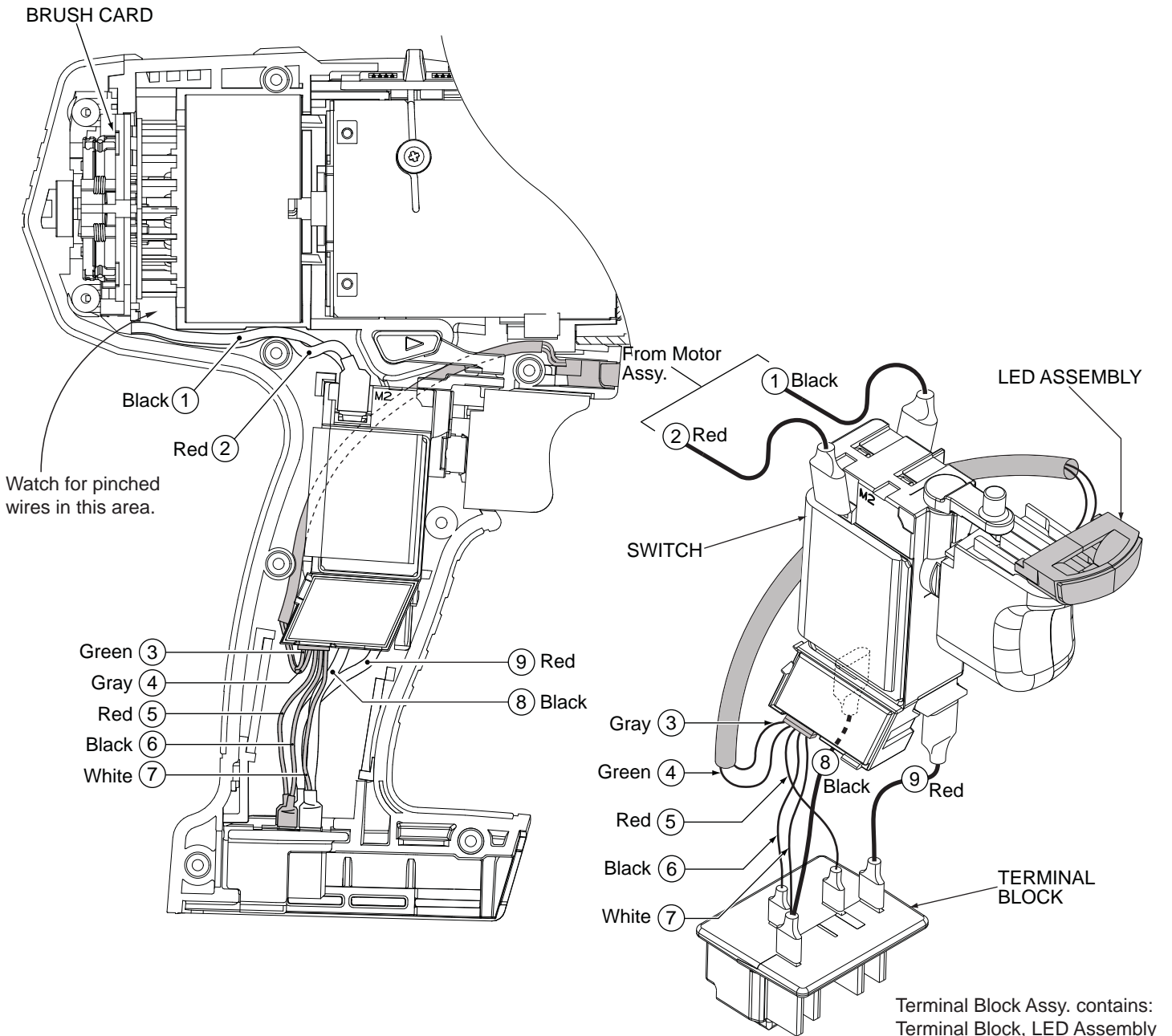


FIG.	PART NO.	DESCRIPTION OF PART	NO. REQ.
1	05-88-0310	M6 x 1.0 Pan Hd. Chuck Screw	(1)
2	42-66-0780	1/2" Chuck	(1)
3	05-88-0770	M3 Handle Screw T-10	(7)
4	18-01-3010	Service Field	(1)
5	16-01-3015	Service Armature Assembly	(1)
6	-----	Brush Card	(1)
7	45-24-0250	High / Low Shifter	(1)
8	42-42-0850	Forward / Reverse Button	(1)
9	23-66-1235	Switch Assembly	(1)
10	40-50-1090	Compression Spring	(1)
11	10-20-2695	Warning Label	(1)
12	45-30-0270	Rubber Slug	(4)
14	05-88-0675	M3.0 x 20mm End Cap/Gearcase Scr T-10	(8)
15	-----	Left Handle	(1)
16	-----	Right Handle	(1)
17	42-50-1060	End Cap	(1)
18	-----	LED Assembly	(1)
19	-----	Terminal Block Assembly	(1)
20	-----	Red Leadwire Assembly	(1)
21	-----	Black Leadwire Assembly	(1)
22	12-20-2602	Service Nameplate Kit	(1)
23	14-29-0375	Service Gearcase Assembly	(1)
24	31-44-2630	Service Housing Kit	(1)
25	42-55-2602	Carrying Case, Optional	(1)



SWITCH ASSEMBLY:
Consists of Switch, LED Assembly, Brush Card, Lead Wire Assemblies and Terminal Block Assy.



Terminal Block Assy. contains:
Terminal Block, LED Assembly
(Including wires 3, 4, 5, 6 & 7),
Black Leadwire Assembly 8
and Red Leadwire Assembly 9.

WIRING SPECIFICATIONS

Wire No.	Wire Color	Origin or Gauge	Length	Terminals, Connectors and 1 or 2 End Wire Preparation
1	Black	-----	-----	Component of the Brush Card Assembly.
2	Red	-----	-----	Component of the Brush Card Assembly.
3	Green	-----	-----	Component of the LED Assy./Terminal Block Assy.
4	Gray	-----	-----	Component of the LED Assy./Terminal Block Assy.
5	Red	-----	-----	Component of the LED Assy./Terminal Block Assy.
6	Black	-----	-----	Component of the LED Assy./Terminal Block Assy.
7	White	-----	-----	Component of the LED Assy./Terminal Block Assy.
8	Black	-----	-----	Component of the Terminal Block Assembly.
9	Red	-----	-----	Component of the Terminal Block Assembly.