



SERVICE PARTS LIST
PAGE 1 OF 6 BASE ASSEMBLY

BULLETIN NO.
54-40-6925

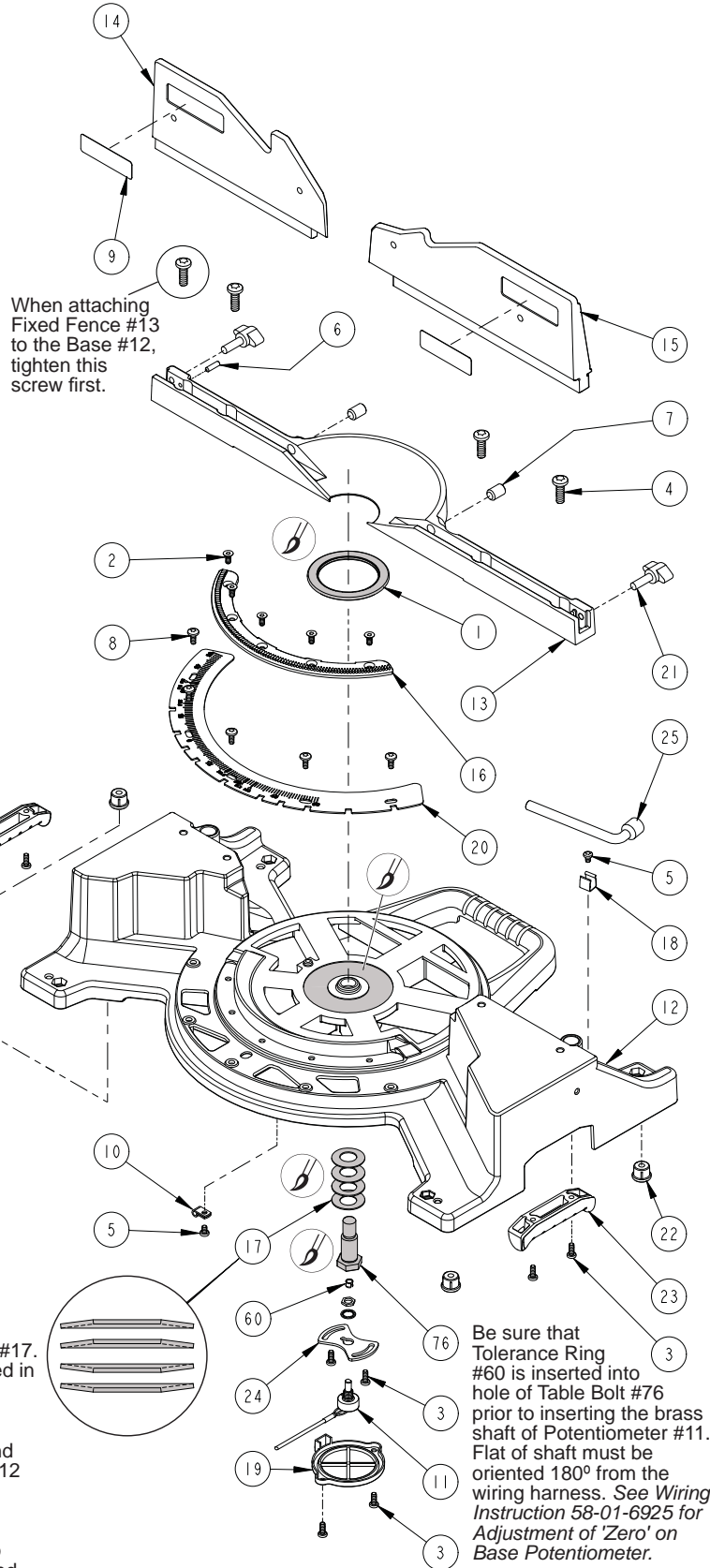
| | | | |
|--|----------------|---|-------------|
| SPECIFY CATALOG NO. AND SERIAL NO. WHEN ORDERING PARTS | | REVISED BULLETIN | DATE |
| 12" SLIDING COMPOUND MITER SAW | | | Jan. 2009 |
| CATALOG NO. | 6955-20 | SERIAL NUMBER | B26A |
| | | WIRING INSTRUCTION 58-01-6925 | |

00 0

EXAMPLE:

Component Parts (Small #) Are Included
When Ordering The Assembly (Large #).

| FIG. | PART NO. | DESCRIPTION OF PART | NO REQ. |
|------|------------|---|---------|
| 1 | 02-80-0050 | Thrust Bearing | (1) |
| 2 | 05-80-0510 | M5 x 12mm Flat Head T-20 Screw | (5) |
| 3 | 05-81-0135 | M5 x 13mm Pan Head T-25 Screw | (8) |
| 4 | 05-81-0150 | M8 x 25mm Pan Head T-45 Screw | (4) |
| 5 | 05-81-0235 | M5 x 7mm Pan Head T-25 Screw | (2) |
| 6 | 05-86-0640 | M5 x 18mm Hex Socket Set Screw | (1) |
| 7 | 05-86-0660 | M12 x 1 x 18mm T-25 Socket Set Screw | (2) |
| 8 | 05-89-0530 | M5 x 13mm Pan Hd T-25 Shoulder Scr | (5) |
| 9 | 10-20-9115 | Fence Label | (2) |
| 10 | 22-38-0175 | Cable Clamp | (1) |
| 11 | 23-45-0010 | Potentiometer (Incl. Hex Nut & Star Washer) | (1) |
| 12 | 28-06-1260 | 12" Sliding Miter Base | (1) |
| 13 | 28-35-0105 | Fixed Fence | (1) |
| 14 | 28-35-0110 | Left Fence (Moving Fence) | (1) |
| 15 | 28-35-0120 | Right Fence | (1) |
| 16 | 32-48-0121 | Rack | (1) |
| 17 | 40-50-8620 | Belleville Spring | (4) |
| 18 | 42-70-5145 | Wrench Clamp | (1) |
| 19 | 42-92-1130 | Potentiometer Cover | (1) |
| 20 | 43-82-0165 | Miter Scale | (1) |
| 21 | 43-98-0275 | Lock Knob Bolt | (2) |
| 22 | 44-34-0025 | Miter Base Foot | (4) |
| 23 | 44-52-0950 | Handle Grip | (2) |
| 24 | 44-66-0970 | Potentiometer Plate | (1) |
| 25 | 45-96-0300 | Blade Wrench | (1) |
| 60 | 42-90-0130 | Tolerance Ring | (1) |
| 76 | 45-08-0455 | Table Bolt | (1) |



SERVICE NOTES:

Orient Thrust Bearing #1 with printed ID stripe up, facing away from Base #12.

When assembling the Fixed Fence #13 to the Base #12, secure the left most Screw #4 as illustrated, followed by the other three screws.

Moving Fence Adjustment: (Left Fence)

- Turn Set Screw #7 (located on left side of Fixed Fence #13) clockwise until Set Screw touches Moving Fence #14, then back off 1/8 to 1/4 turn.
- The Moving Fence #14 must be able to be rotated and slide past the Set Screw #6.
- Set Screw #6 must protrude past machined surface of Fixed Fence #13.

Removable Fence Adjustment: (Right Fence)

- Turn Set Screw #7 (located on right side of Fixed Fence #13) clockwise until Set Screw touches Removable Fence #15, then back off 1/8 to 1/4 turn.



LUBRICATION NOTE

Place a light coat of Type 'Y' grease, No. 48-08-5270 to Belleville Springs #17. Belleville Springs are to be assembled in the order shown.

Place a light coat of Type 'Y' grease, to both sides of Thrust Bearing #1 and corresponding center bore of Base #12 as shown.

Place a light coat of Type 'Y' grease, on the shaft of Table Bolt #76 prior to inserting through hole in Base #12 and threading into hole on the bottom of Table #43 (shown on next page).

Be sure that Tolerance Ring #60 is inserted into hole of Table Bolt #76 prior to inserting the brass shaft of Potentiometer #11. Flat of shaft must be oriented 180° from the wiring harness. See *Wiring Instruction 58-01-6925 for Adjustment of 'Zero' on Base Potentiometer.*

MILWAUKEE ELECTRIC TOOL CORPORATION
13135 W. LISBON RD., BROOKFIELD, WI 53005



SERVICE PARTS LIST
PAGE 2 OF 6 TABLE ASSEMBLY

BULLETIN NO.
54-40-6925

| SPECIFY CATALOG NO. AND SERIAL NO. WHEN ORDERING PARTS | | | REVISED BULLETIN | DATE |
|--|----------------|----------------------|--|-----------|
| 12" SLIDING COMPOUND MITER SAW | | | | Jan. 2009 |
| CATALOG NO. | 6955-20 | SERIAL NUMBER | WIRING INSTRUCTION 58-01-6925 | |
| | | B26A | | |

EXAMPLE:
00 0 Component Parts (Small #) Are Included
When Ordering The Assembly (Large #).

* Early designs of Switch Mount #44 had individual spacers. Service replacement has spacers molded into part.

| FIG. | PART NO. | DESCRIPTION OF PART | NO REQ. |
|------|------------|--------------------------------------|---------|
| 27 | 05-55-0915 | M8 Prevailing Torque Nut | (1) |
| 28 | 05-81-0115 | M4 x 6mm Pan Head T-20 Screw | (1) |
| 29 | 05-81-0130 | M4 x 8mm Pan Head T-20 Screw | (5) |
| 30 | 05-81-0135 | M5 x 13mm Pan Head T-25 Screw | (20) |
| 31 | 05-81-0200 | M5 x 10mm Pan Head T-25 Screw | (2) |
| 32 | 05-81-0235 | M5 x 7mm Pan Head T-25 Screw | (1) |
| 33 | 05-86-0640 | M5 x 18mm Set Screw | (1) |
| 34 | 05-88-5910 | M3.5 x 8mm Pan Hd Slit T-10 PT Screw | (4) |
| 35 | 05-88-5988 | K50 x 35mm Slit Pan Hd T-20 Screw | (2) |
| 36 | 10-20-7900 | Fine Adjustment Label | (1) |
| 37 | 10-20-9120 | Slide Label | (1) |
| 38 | 10-20-9125 | Fine Adjustment Warning Label | (1) |
| 39 | 10-20-9135 | Round Label | (2) |
| 40 | 22-09-1580 | LCD Assembly | (1) |
| 41 | 22-38-0175 | Cable Clamp | (4) |
| 42 | 23-66-0705 | Digital Readout Calibration Switch | (1) |
| 43 | 28-06-1250 | Slider Table | (1) |
| 44 | 31-01-1575 | Switch Mount (Miter) | (1) |
| 45 | 31-12-0030 | Bearing Cap | (1) |
| 46 | 32-48-0115 | Fine Adjustment Tube Gear | (1) |
| 47 | ----- | Fine Adjustment Gear | (1) |
| 48 | 32-48-0130 | Reduction Gear | (1) |
| 49 | ----- | Pinion Gear | (1) |
| 50 | 34-60-0020 | External Retaining Ring | (2) |
| 51 | ----- | External Retaining Ring | (1) |
| 52 | 34-60-1450 | E-Ring | (1) |
| 53 | 40-50-0390 | Spring | (1) |
| 54 | 40-50-0455 | Miter Detent Spring | (1) |
| 55 | 40-50-0460 | Fine Adjustment Return Spring | (1) |
| 56 | ----- | Slide Block | (1) |
| 57 | ----- | Fine Adjustment Chassis | (1) |
| 58 | ----- | Lock Handle Cap | (1) |
| 59 | 42-52-1040 | Spring Cap | (2) |
| 60 | 42-90-0130 | Tolerance Ring | (1) |
| 61 | 42-92-1135 | Cover (Detent Mech.) | (1) |

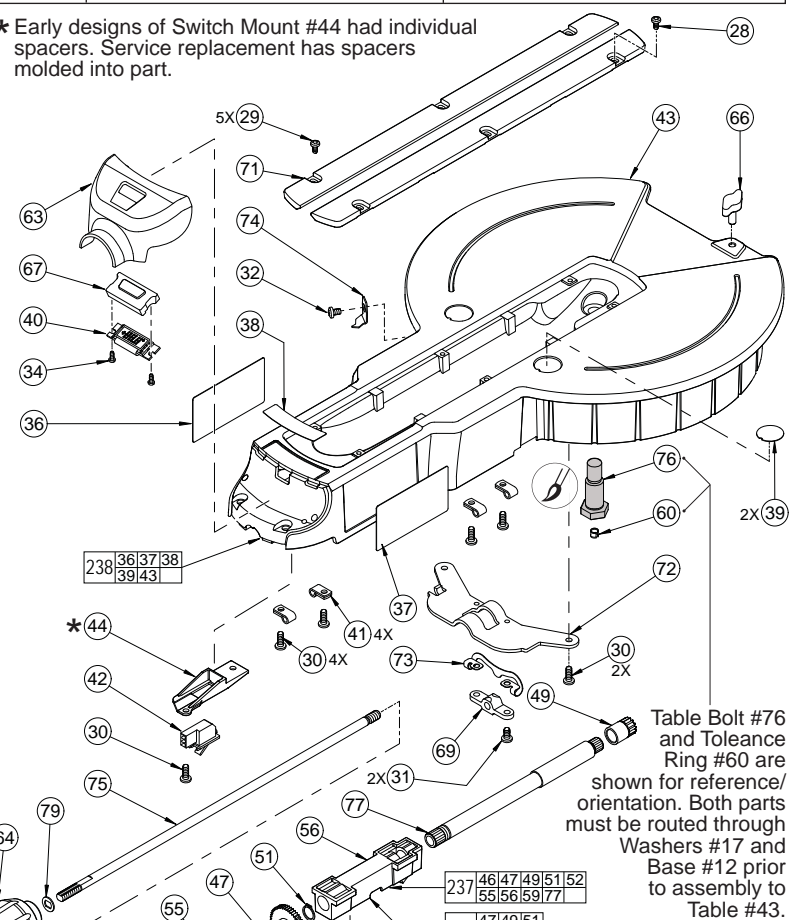
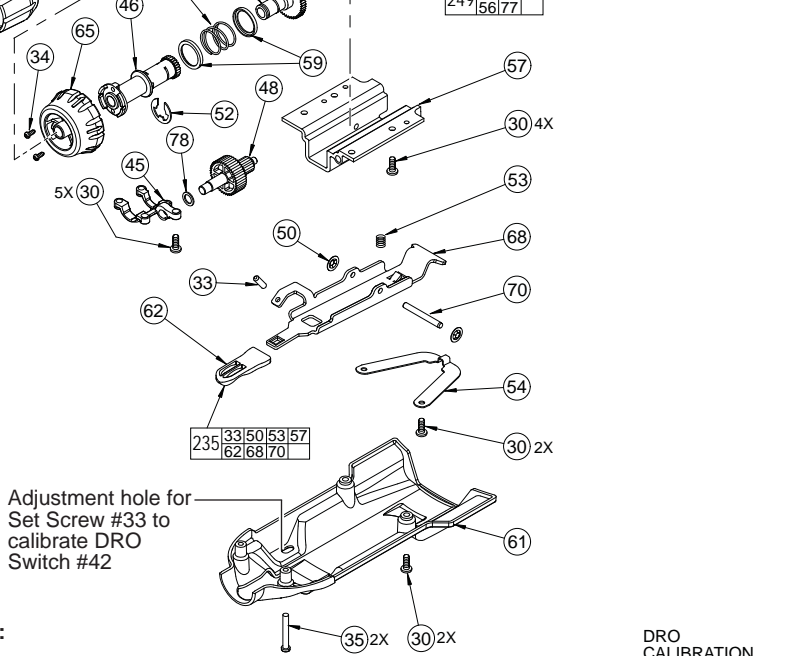


Table Bolt #76 and Tolerance Ring #60 are shown for reference/orientation. Both parts must be routed through Washers #17 and Base #12 prior to assembly to Table #43.

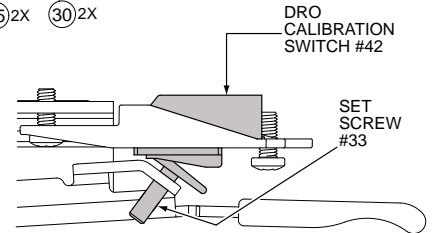
LUBRICATION NOTES
Place a light coat of Type 'Y' grease, No. 48-08-5270 to Table Bolt #76.

| FIG. | PART NO. | DESCRIPTION OF PART | NO REQ. |
|------|------------|--------------------------------|---------|
| 62 | 43-62-1340 | Detent Lever Handle | (1) |
| 63 | 43-76-0740 | LCD Cover | (1) |
| 64 | ----- | Table Lock Knob | (1) |
| 65 | 43-98-0250 | Fine Adjustment Knob | (1) |
| 66 | 43-98-0255 | Lock Knob Bolt | (1) |
| 67 | 44-06-0030 | LCD Lens Cover | (1) |
| 68 | 44-10-0155 | Detent Lever | (1) |
| 69 | 44-40-0105 | Lock Block | (1) |
| 70 | 44-60-0495 | Hinge Pin | (1) |
| 71 | 14-46-1275 | Service Kerf Plates (Set of 2) | (1) |
| 72 | 44-66-0265 | Table Lock Bracket | (1) |
| 73 | ----- | Miter Lock Plate | (1) |
| 74 | 44-72-0061 | Miter Pointer | (1) |
| 75 | ----- | Handle Lock Rod | (1) |
| 76 | 45-08-0455 | Table Bolt | (1) |
| 77 | ----- | Compound Pinion Tube | (1) |
| 78 | 45-88-3045 | Washer | (1) |
| 79 | ----- | Special Washer | (1) |
| 235 | 14-48-0105 | Chassis Assembly | (1) |
| 236 | 14-48-0085 | Table Lock Rod Assembly | (1) |
| 237 | 14-48-0095 | Fine Adjustment Assembly | (1) |
| 238 | 28-06-1140 | Table Assembly | (1) |
| 249 | 14-48-0096 | Slide Block Assembly | (1) |



ADJUSTMENT OF Digital Readout (DRO) CALIBRATION SWITCH:

- Turn the Calibration Set Screw #33 in (toward Switch #42) enough that the calibration switch contacts will not close.
- With the Miter Detent Spring #54 out of the detent notch in the Miter Detent Scale #20, but resting on the Miter Scale, move the Table #43 about 1.5" to either side of the "0" position and return to the "0" notch.
- Insert a 2.5mm hex key into Set Screw #33 and adjust by turning the screw out (clockwise when viewed from the operators position) until the digital read out changes from the set angle to "0". Turn Set Screw #33 an extra 1/4-1/2 turn out.
- Remove 2.5mm adjustment hex key from Set Screw #33. See *Wiring Instruction* for more detail.



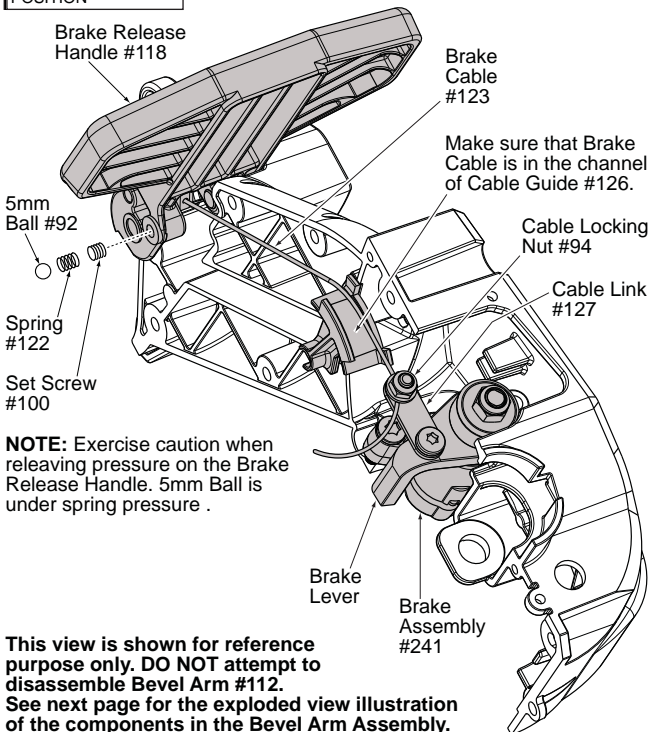
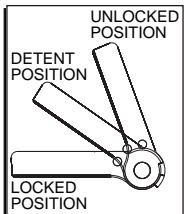
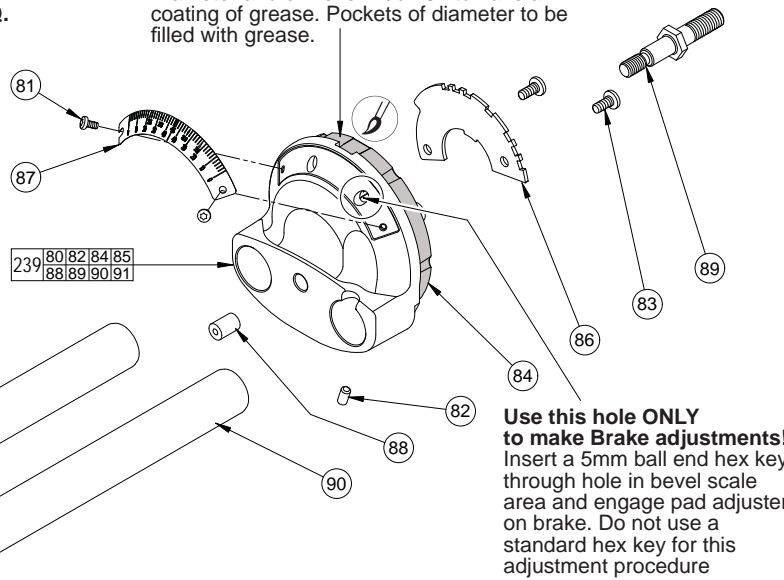
| | | | | |
|--|---------|---------------|--------------------|-----------|
| SPECIFY CATALOG NO. AND SERIAL NO. WHEN ORDERING PARTS | | | REVISED BULLETIN | DATE |
| 12" SLIDING COMPOUND MITER SAW | | | | Jan. 2009 |
| CATALOG NO. | 6955-20 | SERIAL NUMBER | WIRING INSTRUCTION | |
| | | B26A | 58-01-6925 | |

EXAMPLE:
00 0
Component Parts (Small #) Are Included
When Ordering The Assembly (Large #).

LUBRICATION NOTES
Coat with Type 'Y' grease. No. 49-08-5270.

Diameter and of Bevel Hub #84 to have a coating of grease. Pockets of diameter to be filled with grease.

| FIG. | PART NO. | DESCRIPTION OF PART | NO REQ. |
|------|------------|------------------------------------|---------|
| 80 | 05-80-0510 | M5 x 12mm Flat Head T-20 Screw | (2) |
| 81 | 05-81-0130 | M4 x 8mm Pan Head T-20 Screw | (2) |
| 82 | 05-86-0650 | M5 x .8 x 8mm Hex Socket Set Screw | (1) |
| 83 | 05-89-0535 | M6 x 1 x 13mm Pan Head T-25 Screw | (2) |
| 84 | ----- | Bevel Hub | (1) |
| 85 | 42-38-0395 | Bumper | (2) |
| 86 | 43-06-0035 | Brake Disk | (1) |
| 87 | 43-82-0160 | Bevel Scale | (1) |
| 88 | 45-30-0225 | Rubber Slug | (1) |
| 89 | 45-58-0125 | Stud | (1) |
| 90 | ----- | Slide Tube | (2) |
| 91 | 45-98-0030 | Tie Bar | (1) |
| 239 | 28-53-0350 | Bevel Hub Assembly | (1) |



1. ADJUSTMENT OF BRAKE CABLE:
(Reference next page for Bevel Arm Assembly)

- A. Start with Bevel Release Handle #118, Brake Cable #123, Bevel Brake #241 and Cable Link #127 assembled in Bevel Arm #112. Cable inserted into Cable Link but not tightened.
- B. Move Bevel Release Handle to detent position.
- C. Move and hold brake release lever in position by use of a gage block.
 - C.1 For Sliding Compound model 6955 use special service fixture No. 61-10-0095.
- D. Pull Cable taught using needle nose pliers.
- E. Tighten Cable Locking Nut #94 to 45-50 in./lb.
- F. Lift Bevel Release Handle to release support of brake lever.
- G. Move Bevel Release Handle to locked position.

2. ADJUSTMENT OF STATIONARY BRAKE PAD IN BEVEL ARM:

- A. Remove Dust Chutes #115, #116 and Vertical Air Deflector #117. Release Bevel Brake.
- B. Move Bevel Arm to right side hard stop.
- C. Block Bevel Release Handle to hold Break in the released position.
 - C.1 For Sliding Compound model 6955 use special service fixture No. 61-10-0275.
- D. Remove Bevel Scale Mounting Screw #81 on right side of Bevel Scale #87, loosen Scale Mounting Screw on left side of Scale and remove Bevel Scale.
- E. Insert a 5mm ball end hex key through right hole in bevel scale area of Bevel Hub #84 (see illustration) and engage pad adjuster on Brake. Do not use a standard hex key for this adjustment procedure.
- F. Turn pad adjuster to the right until it stops against the Disk #86.
- G. Turn pad adjuster to the left 1/8 turn.
- H. Remove hex key from break adjuster.
- I. Reassemble Bevel Scale, Vertical Air Deflector and Dust Chutes to saw.

This view is shown for reference purpose only. DO NOT attempt to disassemble Bevel Arm #112. See next page for the exploded view illustration of the components in the Bevel Arm Assembly.

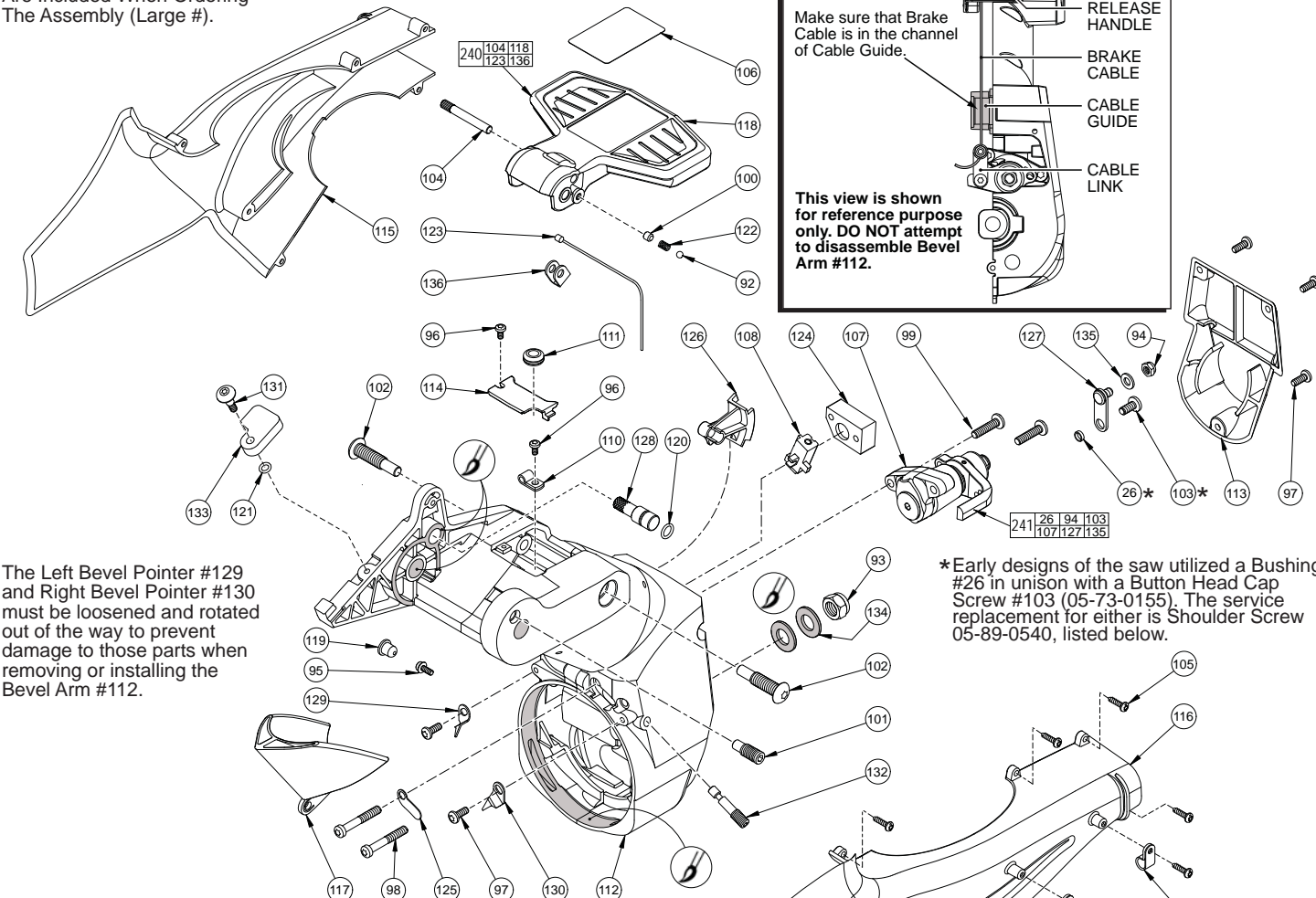


SERVICE PARTS LIST
PAGE 4 OF 6 BEVEL ARM ASSY.

BULLETIN NO.
54-40-6925

| | | | |
|--|----------------|---|-------------|
| SPECIFY CATALOG NO. AND SERIAL NO. WHEN ORDERING PARTS | | REVISED BULLETIN | DATE |
| 12" SLIDING COMPOUND MITER SAW | | | Jan. 2009 |
| CATALOG NO. | 6955-20 | SERIAL NUMBER | B26A |
| | | WIRING INSTRUCTION 58-01-6925 | |

EXAMPLE:
Component Parts (Small #)
Are Included When Ordering
The Assembly (Large #).



The Left Bevel Pointer #129 and Right Bevel Pointer #130 must be loosened and rotated out of the way to prevent damage to those parts when removing or installing the Bevel Arm #112.

*Early designs of the saw utilized a Bushing #26 in unison with a Button Head Cap Screw #103 (05-73-0155). The service replacement for either is Shoulder Screw 05-89-0540, listed below.

| FIG. | PART NO. | DESCRIPTION OF PART | NO REQ. |
|------|------------|--|---------|
| 26 | 42-40-0945 | Bushing | (1) |
| 92 | 02-02-1300 | 5mm Ball | (1) |
| 93 | 05-55-0970 | M12 Prevailing Torque Nut | (1) |
| 94 | 05-55-0965 | M6 Prevailing Torque Nut | (1) |
| 95 | 05-79-0010 | M4 x 10mm Hex Socket Washer Hd Scr | (1) |
| 96 | 05-81-0130 | M4 x 8mm Pan Head T-20 Screw | (2) |
| 97 | 05-81-0135 | M5 x 13mm Pan Head T-25 Screw | (5) |
| 98 | 05-81-0140 | M6 x 40mm Pan Head T-25 Screw | (2) |
| 99 | 05-81-0145 | M6 x 25mm Pan Head T-30 Screw | (2) |
| 100 | 05-86-0655 | M6 x 1 x 6mm Hex Socket Set Screw | (1) |
| 101 | 05-89-0520 | M10 x 1.5mm Hex Socket Stop Screw | (1) |
| 102 | 05-89-0525 | M10 x 1.5 x 44mm T-45 Pivot Screw | (2) |
| 103 | 05-89-0540 | 8 x 2.5mm Phillips Pan Hd Shoulder Scr | (1) |
| 104 | 06-65-0530 | Dowel Pin | (1) |
| 105 | 06-82-9220 | K40 x 5/8" Pan Hd Slotted T-20 Screw | (8) |
| 106 | 10-20-9100 | Bevel Lock Label | (1) |
| 107 | ----- | Caliper | (1) |
| 108 | 14-48-0075 | Detent Assembly | (1) |
| 109 | 22-38-0150 | Cable Clamp | (2) |
| 110 | 22-38-0175 | Cable Clamp | (1) |
| 111 | 22-90-0245 | Grommet | (1) |
| 112 | 28-04-0405 | Bevel Arm | (1) |
| 113 | 31-15-1510 | Back Cover | (1) |
| 114 | 31-15-1515 | Bevel Top Cover | (1) |
| 115 | 31-15-2130 | Dust Chute, Left | (1) |
| 116 | 31-15-2135 | Dust Chute, Right | (1) |
| 117 | 31-15-2155 | Deflector Verticale | (1) |
| 118 | 31-44-2310 | Bevel Release Handle | (1) |
| 119 | 31-53-0235 | Plug | (1) |
| 120 | 34-40-0250 | O-Ring | (1) |
| 121 | 34-40-0255 | O-Ring | (1) |
| 122 | 40-50-3940 | Spring | (1) |
| 123 | 42-44-0005 | Cable | (1) |

| FIG. | PART NO. | DESCRIPTION OF PART | NO REQ. |
|------|------------|-------------------------------|---------|
| 124 | 42-68-0050 | Detent Clamp | (1) |
| 125 | 42-92-1145 | Detent Cover | (1) |
| 126 | 43-56-0835 | Cable Guide | (1) |
| 127 | 44-14-0285 | Cable Link | (1) |
| 128 | 44-60-1800 | Lock Pin | (1) |
| 129 | 44-72-0070 | Bevel Pointer, Left | (1) |
| 130 | 44-72-0075 | Bevel Pointer, Right | (1) |
| 131 | 45-04-0020 | 6 x 10mm Shoulder Screw | (1) |
| 132 | 45-04-0025 | Adjusting Screw | (1) |
| 133 | 45-52-0100 | Dado Stop | (1) |
| 134 | 45-88-1670 | M12 Washer | (2) |
| 135 | 45-88-3055 | Flat Washer | (1) |
| 136 | 45-98-0035 | Cable Yoke | (1) |
| 240 | 14-34-0605 | Bevel Release Handle Assembly | (1) |
| 241 | 14-04-0100 | Brake Assembly | (1) |
| | 31-15-2140 | Dust Elbow (Not Shown) | (1) |
| | 42-16-0240 | Dust Bag (Not Shown) | (1) |

LUBRICATION NOTES
Coat with Type 'Y' grease, No. 49-08-5270.

Bore of bevel arm #112.
Motor arm guide faces and axle bores of bevel arm #112.



SERVICE PARTS LIST
PAGE 5 OF 6 MOTOR ASSEMBLY

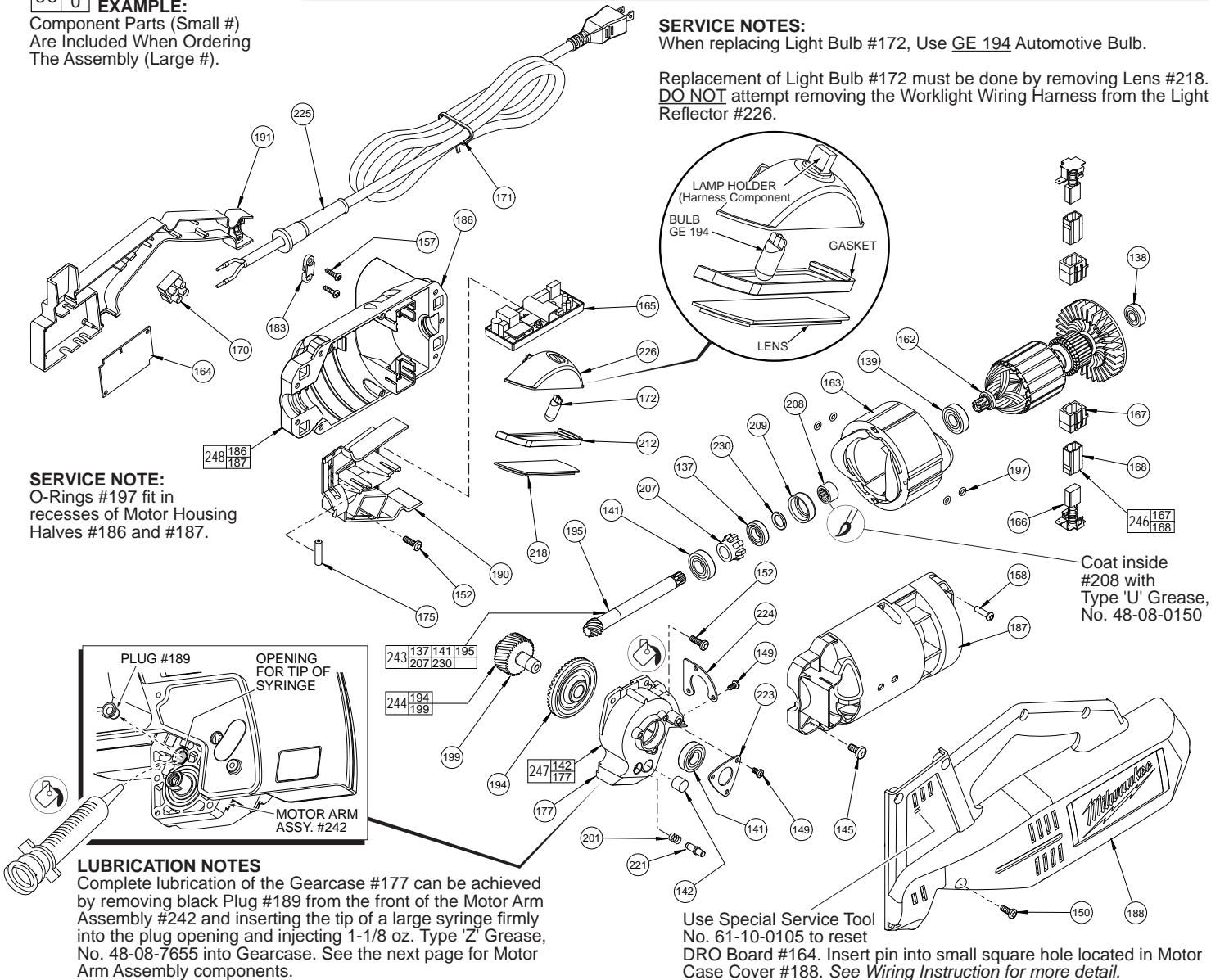
BULLETIN NO.
54-40-6925

| | | | |
|--|----------------|---|-------------|
| SPECIFY CATALOG NO. AND SERIAL NO. WHEN ORDERING PARTS | | REVISED BULLETIN | DATE |
| 12" SLIDING COMPOUND MITER SAW | | | Jan. 2009 |
| CATALOG NO. | 6955-20 | SERIAL NUMBER | B26A |
| | | WIRING INSTRUCTION 58-01-6925 | |

EXAMPLE:
Component Parts (Small #)
Are Included When Ordering
The Assembly (Large #).

SERVICE NOTES:
When replacing Light Bulb #172, Use GE 194 Automotive Bulb.

Replacement of Light Bulb #172 must be done by removing Lens #218.
DO NOT attempt removing the Worklight Wiring Harness from the Light Reflector #226.



SERVICE NOTE:
O-Rings #197 fit in
recesses of Motor Housing
Halves #186 and #187.

Coat inside
#208 with
Type 'U' Grease,
No. 48-08-0150

LUBRICATION NOTES

Complete lubrication of the Gearcase #177 can be achieved by removing black Plug #189 from the front of the Motor Arm Assembly #242 and inserting the tip of a large syringe firmly into the plug opening and injecting 1-1/8 oz. Type 'Z' Grease, No. 48-08-7655 into Gearcase. See the next page for Motor Arm Assembly components.

Use Special Service Tool
No. 61-10-0105 to reset
DRO Board #164. Insert pin into small square hole located in Motor
Case Cover #188. See *Wiring Instruction* for more detail.

| FIG. | PART NO. | DESCRIPTION OF PART | NO REQ. |
|------|------------|--------------------------------------|---------|
| 137 | 02-04-0100 | Ball Bearing | (1) |
| 138 | 02-04-0852 | Ball Bearing | (1) |
| 139 | 02-04-1212 | Ball Bearing | (1) |
| 141 | 02-08-0510 | Ball Bearing | (2) |
| 142 | 02-50-2150 | Needle Bearing | (1) |
| 145 | 05-73-0155 | M6 x 13 Pan Head T-27 Screw | (4) |
| 149 | 05-81-0130 | M4 x 8 Pan Head T-20 Screw | (6) |
| 150 | 05-81-0135 | M5 x 13 Pan Head T-25 Screw | (8) |
| 152 | 05-81-0155 | M5 x 16 Pan Head T-25 Screw | (4) |
| 157 | 06-82-9220 | K40 x 5/8" Slotted T-20 PT Screw | (2) |
| 158 | 06-95-6290 | M5 x 2.24 x 18 Slotted T-20 PT Screw | (9) |
| 162 | 16-70-5010 | Service Armature Assembly | (1) |
| 163 | 18-70-5000 | Service Field | (1) |
| 164 | 22-09-1060 | DRO Board | (1) |
| 165 | 22-09-1590 | 120V Motor Control | (1) |
| 166 | 14-46-1260 | Brush Set (Set of 2) | (1) |
| 167 | ----- | Brush Holder | (2) |
| 168 | ----- | Brush Tube | (2) |
| 170 | 22-56-0470 | Terminal Block | (1) |
| 171 | 22-64-6495 | 120V Cord Set | (1) |
| 172 | ----- | Light Bulb (See Note) | (1) |
| 175 | 23-80-0020 | Speed Control Sensor | (1) |
| 177 | ----- | Gear Case | (1) |
| 183 | 31-17-0155 | Cord Clamp | (1) |
| 186 | ----- | Motor Housing - Left | (1) |

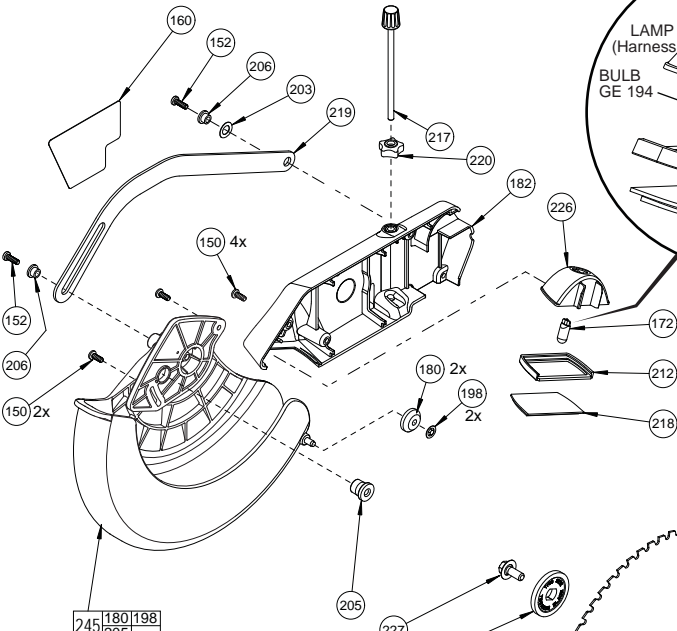
| FIG. | PART NO. | DESCRIPTION OF PART | NO REQ. |
|------|------------|-----------------------------|---------|
| 187 | ----- | Motor Housing - Right | (1) |
| 188 | 31-50-2210 | Motor Case Cover | (1) |
| 190 | 31-55-0035 | Lower Tray | (1) |
| 191 | 31-55-0040 | Upper Tray | (1) |
| 194 | ----- | Bevel Gear | (1) |
| 195 | 32-60-0081 | Bevel Pinion Shaft | (1) |
| 197 | 34-60-0260 | O-Ring | (4) |
| 199 | ----- | Pinion Gear | (1) |
| 201 | 40-50-0390 | Spring | (1) |
| 207 | 42-76-0540 | Speed Control Collar | (1) |
| 208 | 42-90-0095 | Coupling | (1) |
| 209 | 42-96-0080 | Bearing Cup | (1) |
| 212 | 43-44-0055 | Gasket | (1) |
| 218 | 44-06-0115 | Lens | (1) |
| 221 | 44-60-0705 | Spindle Lock Pin | (1) |
| 223 | 44-66-0950 | Bearing Plate | (1) |
| 224 | 44-66-0955 | Bearing Plate | (1) |
| 225 | 44-76-0210 | Cord Protector | (1) |
| 226 | 44-79-0040 | Light Reflector | (1) |
| 230 | 45-36-2010 | Spacer | (1) |
| 243 | 14-29-0240 | Bevel Pinion Shaft Assembly | (1) |
| 244 | 14-29-0250 | Gear Service Assembly | (1) |
| 246 | 22-20-0980 | Brush Holder Assembly | (2) |
| 247 | 14-30-0910 | Gear Case Service Assembly | (1) |
| 248 | 31-50-2206 | Motor Housing Assembly | (1) |

| | | | |
|--|----------------|---|-------------|
| SPECIFY CATALOG NO. AND SERIAL NO. WHEN ORDERING PARTS | | REVISED BULLETIN | DATE |
| 12" SLIDING COMPOUND MITER SAW | | | Jan. 2009 |
| CATALOG NO. | 6955-20 | SERIAL NUMBER | B26A |
| | | WIRING INSTRUCTION 58-01-6925 | |

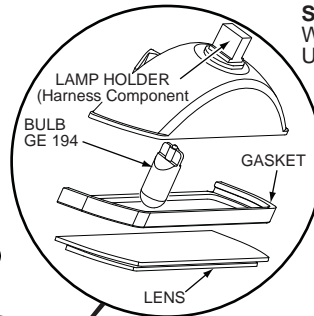
00 0

EXAMPLE:

Component Parts (Small #) are Included When Ordering The Assembly (Large #).



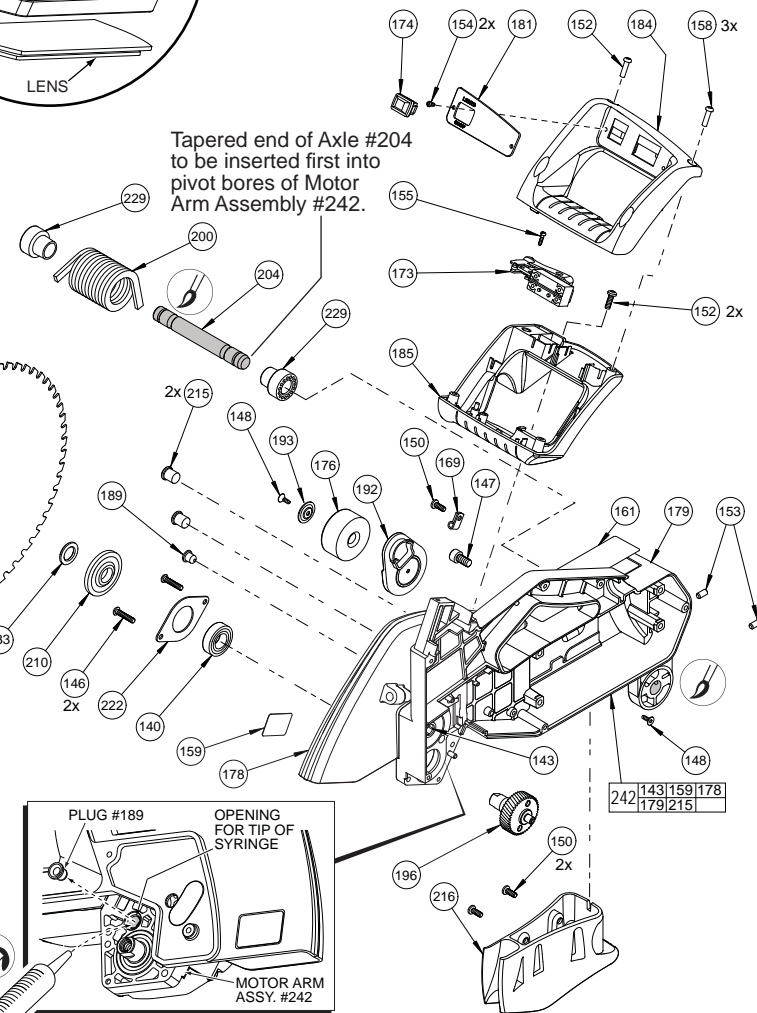
DO NOT attempt to disassemble the Lower Blade Guard Assembly #245.



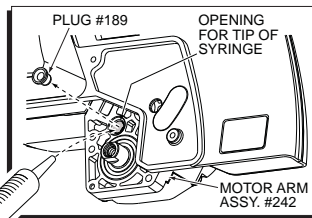
SERVICE NOTES:

When replacing Light Bulb #172, Use GE 194 Automotive Bulb.

Replacement of Light Bulb #172 must be done by removing Lens #218. **DO NOT** attempt removing the Worklight Wiring Harness from the Light Reflector #226.



Tapered end of Axle #204 to be inserted first into pivot bores of Motor Arm Assembly #242.



LUBRICATION NOTES

Complete lubrication of Gearcase #177 (see previous page) can be achieved by removing black Plug #189 from the front of the Motor Arm Assembly #242 and inserting the tip of a large syringe firmly into the plug opening and injecting 1-1/8 oz. Type 'Z' Grease, No. 48-08-7655 into Gearcase.

LUBRICATION NOTES

Fill outer grooves and coat surface of Axle #204 with Type 'Y' Grease, No. 48-08-5270.

Coat pivot bores of Motor Arm Assembly #242 with Type 'Y' Grease.

| FIG. | PART NO. | DESCRIPTION OF PART | NO REQ. |
|------|------------|--------------------------------------|---------|
| 140 | 02-04-1700 | Ball Bearing | (1) |
| 143 | ----- | Needle Bearing | (1) |
| 146 | 05-73-0160 | M5 x 25 Button Head T-25 Screw | (2) |
| 147 | 05-74-0050 | M8 x 16 Socket Head Cap Screw | (1) |
| 148 | 05-80-0500 | K40 x 12mm Flat Head T-20 PT Screw | (2) |
| 150 | 05-81-0135 | M5 x 13 Pan Head T-25 Screw | (7) |
| 152 | 05-81-0155 | M5 x 16 Pan Head T-25 Screw | (5) |
| 153 | 05-86-0645 | M6 Set Screw | (2) |
| 154 | 05-88-5910 | M3.5 x 1.57 x 8mm Pan Hd T-10 Screw | (2) |
| 155 | 05-88-5915 | M3.5 x 1.57 x 12mm Pan Hd T-10 Screw | (1) |
| 158 | 06-95-6290 | M5 x 2.24 x 18 Slotted T-20 PT Screw | (3) |
| 159 | 10-20-9105 | Guard Plate Label | (1) |
| 160 | 10-20-9110 | Arm Warning Label | (1) |
| 161 | 12-20-0095 | Service Nameplate | (1) |
| 169 | 22-38-0175 | Cable Clamp | (1) |
| 172 | ----- | Light Bulb (See Note) | (1) |
| 173 | 23-66-3035 | Switch | (1) |
| 174 | 23-66-3040 | Rocker Switch | (1) |
| 176 | 23-81-0580 | Transformer | (1) |
| 178 | ----- | Upper Guard | (1) |
| 179 | ----- | Motor Arm | (1) |
| 180 | 31-01-2500 | Lower Guard Wheel | (2) |
| 181 | 31-15-2120 | Handle Cover | (1) |
| 182 | 31-15-2125 | Transformer Cover | (1) |
| 184 | 31-44-2325 | Top Handle | (1) |
| 185 | 31-44-2330 | Bottom Handle | (1) |
| 189 | 31-53-0235 | Plug | (1) |
| 192 | 31-55-0400 | Transformer Shield | (1) |
| 193 | 31-55-0405 | Washer | (1) |
| 196 | 32-75-0080 | Spindle Gear | (1) |
| 198 | 34-60-0020 | External Retaining Ring | (2) |
| 200 | 40-50-0385 | Torsion Spring | (1) |
| 203 | 40-50-3945 | Spring washer | (1) |
| 204 | 42-12-0045 | Axle | (1) |
| 205 | 42-38-0390 | Bumper | (1) |
| 206 | 42-40-0935 | Bushing | (2) |
| 210 | 43-34-0865 | Inner Blade Flange | (1) |
| 211 | 43-34-0870 | Outer Blade Flange | (1) |
| 212 | 43-44-0055 | Gasket | (1) |
| 215 | 43-56-0825 | Blade Deflector | (2) |
| 216 | 43-56-0830 | Chip Deflector | (1) |
| 217 | 43-98-0290 | Depth Adjust Knob | (1) |

| FIG. | PART NO. | DESCRIPTION OF PART | NO REQ. |
|------|------------|----------------------------|---------|
| 218 | 44-06-0115 | Lens | (1) |
| 219 | 44-14-0280 | Guard Link | (1) |
| 220 | 44-40-0100 | Depth Lock Nut | (1) |
| 222 | 44-66-0945 | Bearing Plate | (1) |
| 226 | 44-79-0040 | Light Reflector | (1) |
| 227 | 45-04-0925 | Blade Screw | (1) |
| 229 | 45-36-1640 | Spring Support Bushing | (2) |
| 233 | 45-36-2025 | Blade Spacer | (1) |
| 234 | 42-41-4545 | 12" Miter Saw Blade | (1) |
| 242 | 14-38-0690 | Motor Arm Assembly | (1) |
| 245 | 14-32-0205 | Lower Blade Guard Assembly | (1) |