

SETUP & OPERATION MANUAL

FEATURES

- All single phase models are equipped with totally enclosed, fan cooled, permanently lubricated motors.
- Heavy-duty motor design with a continuous duty rating for industrial applications.
- Heavy-duty base, mounted on four swivel casters for total mobility and stability.
- Precision spin-balanced aluminum impeller for smooth operation, minimal noise and to reduce the risk of sparking.
- All models are equipped with 2 micron filter bags. (Not included on "CF" canister filter model)
- Quick-release bag clamps with metal straps on all models.
- Safety switch with key, prevents unit from being started when key is removed.
- Heavy-duty collection bags made from extra thick, transparent, recyclable plastic.

SPECIFICATIONS

INLET DIAMETERS

(1) 6" (152 mm)
(3) 4" (102 mm)

AIRFLOW CAPACITY

2280 CFM

BLOWER WHEEL

12" (305 mm)

SOUND RATING

85 TO 95 dB

BAG DIAMETER

20" (508 mm)

BAG CAPACITY

83 GAL (377 L.)

STATIC PRESSURE

11" OF WATER

MOTOR

M1 3 HP, 220 V, 1 Ph, 12 A
M3 3 HP, 600 V, 3 Ph, 3.5 A

OVERALL DIMENSIONS (L x W x H)

60" x 32 5/8" x 76"
(1520 x 830 x 1930 mm) - 10-210
61" x 21 5/8" x 74 3/4"
(1550 x 550 x 1900 mm) - 10-210CF

WEIGHT

165 LBS (75 kg) - 10-210
222 LBS (101 kg) - 10-210CF

3 HP DUST COLLECTOR



MODEL

#10-210

#10-210CF





GENERAL® INTERNATIONAL

8360 Champ-d'Eau, Montreal (Quebec) Canada H1P 1Y3
Telephone (514) 326-1161 • Fax (514) 326-5555 • www.general.ca

THANK YOU for choosing this General® International model 10-210 or 10-210CF 3 HP Dust Collector. This dust collector has been carefully tested and inspected before shipment and if properly used and maintained, will provide you with years of reliable service. For your safety, as well as to ensure optimum performance and trouble-free operation, and to get the most from your investment, please take the time to read this manual before assembling, installing and operating the unit.

The manual's purpose is to familiarize you with the safe operation, basic function, and features of this dust collector as well as the set-up, maintenance and identification of its parts and components. This manual is not intended as a substitute for formal woodworking instruction, nor to offer the user instruction in the craft of woodworking. If you are not sure about the safety of performing a certain operation or procedure, do not proceed until you can confirm, from knowledgeable and qualified sources, that it is safe to do so.

Once you've read through these instructions, keep this manual handy for future reference.

Disclaimer: The information and specifications in this manual pertain to the unit as it was supplied from the factory at the time of printing. Because we are committed to making constant improvements, General® International reserves the right to make changes to components, parts or features of this unit as deemed necessary, without prior notice and without obligation to install any such changes on previously delivered units. Reasonable care is taken at the factory to ensure that the specifications and information in this manual corresponds with that of the unit with which it was

supplied. However, special orders and "after factory" modifications may render some or all information in this manual inapplicable to your machine. Further, as several generations of this model of dust collector and several versions of this manual may be in circulation, if you own an earlier or later version of this unit, this manual may not depict your machine exactly. If you have any doubts or questions contact your retailer or our support line with the model and serial number of your unit for clarification.

GENERAL® INTERNATIONAL WARRANTY

All component parts of General® International and Excalibur by General International ® products are carefully inspected during all stages of production and each unit is thoroughly inspected upon completion of assembly.

Limited Lifetime Warranty

Because of our commitment to quality and customer satisfaction, General® International agree to repair or replace any part or component which upon examination, proves to be defective in either workmanship or material to the original purchaser for the life of the tool. However, the Limited Lifetime Warranty does not cover any product used for professional or commercial production purposes nor for industrial or educational applications. Such cases are covered by our Standard 2-year Limited Warranty only. The Limited Lifetime Warranty is also subject to the "Conditions and Exceptions" as listed below.

Standard 2-Year Limited Warranty

All products not covered by our lifetime warranty including products used in commercial, industrial and educational applications are warranted for a period of 2 years (24 months) from the date of purchase. General® International agrees to repair or replace any part or component which upon examination, proves to be defective in either workmanship or material to the original purchaser during this 2-year warranty period, subject to the "conditions and exceptions" as listed below.

To file a Claim

To file a claim under our Standard 2-year Limited Warranty or under our Limited Lifetime Warranty, all defective parts, components or machinery must be returned freight or postage prepaid to General® International, or to a nearby distributor, repair center or other location designated by General® International. For further details call our service department at 1-888-949-1161 or your local distributor for assistance when filing your claim.

Along with the return of the product being claimed for warranty, a copy of the original proof of purchase and a "letter of claim" must be included (a warranty claim form can also be used and can be obtained, upon request, from General® International or an authorized distributor) clearly stating the model and serial number of the unit (if applicable) and including an explanation of the complaint or presumed defect in material or workmanship.

CONDITIONS AND EXCEPTIONS:

This coverage is extended to the original purchaser only. Prior warranty registration is not required but documented proof of purchase i.e. a copy of original sales invoice or receipt showing the date and location of the purchase as well as the purchase price paid, must be provided at the time of claim.

Warranty does not include failures, breakage or defects deemed after inspection by General® International to have been directly or indirectly caused by or resulting from; improper use, or lack of or improper maintenance, misuse or abuse, negligence, accidents, damage in handling or transport, or normal wear and tear of any generally considered consumable parts or components.

Repairs made without the written consent of General® International will void all warranty.

RULES FOR SAFE OPERATION

To help ensure safe operation, please take a moment to learn the machine's applications and limitations, as well as potential hazards. General® International disclaims any real or implied warranty and holds itself harmless for any injury that may result from improper use of its equipment.

1. Do not operate the dust collector when tired, distracted, or under the effects of drugs, alcohol or any medication that impairs reflexes or alertness.
2. The working area should be well lit, clean and free of debris.
3. Keep children and visitors at a safe distance when the dust collector is in operation; do not permit them to operate the dust collector.
4. Childproof and tamper proof your shop and all machinery with locks, master electrical switches and switch keys, to prevent unauthorized or unsupervised use.
5. **Stay alert!** Give your work your undivided attention. Even a momentary distraction can lead to serious injury.
6. Fine particulate dust is a carcinogen that can be hazardous to health. Work in a well-ventilated area and wear face, eye, ear, respiratory and body protection devices.
7. Do not wear loose clothing, gloves, bracelets, necklaces or other jewelry while the dust collector is in operation. Wear protective hair covering to contain long hair and wear non-slip footwear.
8. Do not insert hands, fingers or any foreign objects into ventilation inlet and outlet openings.
9. Do not operate this machine without either a filter bag or canister filter properly installed on the unit.
10. Clean filters (bags on standard model or canister on "CF" model) on a regular basis and replace as needed.
11. Do not handle the electrical plug with wet hands.
12. Do not use this unit outdoors, on or near wet surfaces.
13. Always turn on the dust collector before starting the dust producing machine. Always turn off the dust producing machine before turning off the dust collector.
14. Do not vacuum anything that is burning, smoking or smoldering such as cigarettes, matches or hot ashes.
15. Do not vacuum or use this dust collector near flammable or combustible liquids, gases, gasoline or other fuels, lighter fluid, cleaners, oil or solvent based paints, natural gas, hydrogen or explosive dusts like coal dust, magnesium dust, grain dust or gun powder.
16. Do not operate the unit until a dust hose is installed onto the hose inlet.
17. Never leave the machine unattended while it is running or with the power on.
18. To avoid health hazards from vapors or dusts, do not vacuum toxic material.
19. Use only recommended accessories. Use of accessories NOT recommended by **GENERAL® INTERNATIONAL** may result in a risk of injury or damage to the machine.
20. Always disconnect the unit from the power source before servicing, performing any maintenance or repairs and when changing bags or hoses, or if the machine will be left unattended.
21. Make sure that the switch is in the "OFF" position before plugging in the power cord.
22. Make sure the tool is properly grounded. If equipped with a 3-prong plug, it should be used with a three-pole receptacle. Never remove the third prong.
23. Do not use this dust collector for any purpose other than its intended use. If used for other purposes, **GENERAL® INTERNATIONAL** disclaims any real or implied warranty and holds itself harmless for any injury, which may result from that use.



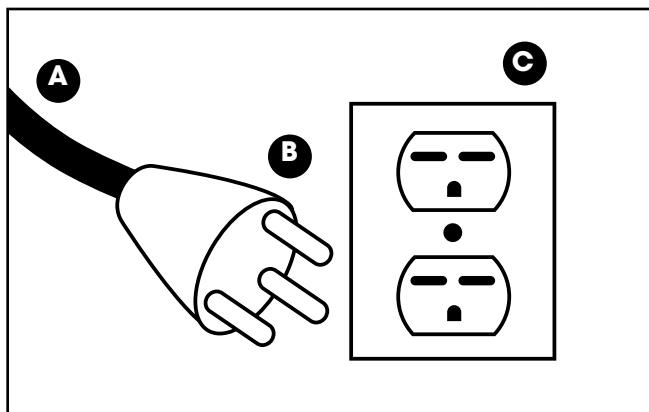
ELECTRICAL REQUIREMENTS



BEFORE CONNECTING THE MACHINE TO THE POWER SOURCE, VERIFY THAT THE VOLTAGE OF YOUR POWER SUPPLY CORRESPONDS WITH THE VOLTAGE SPECIFIED ON THE MOTOR I.D. NAMEPLATE. A POWER SOURCE WITH GREATER VOLTAGE THAN NEEDED CAN RESULT IN SERIOUS INJURY TO THE USER AS WELL AS DAMAGE TO THE MACHINE. IF IN DOUBT, CONTACT A QUALIFIED ELECTRICIAN BEFORE CONNECTING TO THE POWER SOURCE.

THIS TOOL IS FOR INDOOR USE ONLY. DO NOT EXPOSE TO RAIN OR USE IN WET OR DAMP LOCATIONS.

NOTE: VOLTAGE REQUIREMENTS AND AMPERAGE DRAW FOR M2 3-PHASE MOTORS MAY NOT BE FULLY DESCRIBED IN THIS MANUAL. FOR COMPLETE ELECTRICAL REQUIREMENTS REFER TO THE MOTOR I.D. NAME PLATE ON THE MACHINE. IF IN DOUBT CONSULT A LICENSED QUALIFIED ELECTRICIAN BEFORE PROCEEDING.



GROUNDING INSTRUCTIONS

In the event of an electrical malfunction or short circuit, grounding reduces the risk of electric shock to the operator. The motor of this machine is wired for 220V single phase operation and is equipped with a 3-conductor cord **A** and a 3-prong grounded plug **B** to fit a matching grounding type receptacle **C**.

DO NOT MODIFY THE PLUG PROVIDED ! If it will not fit your receptacle, have the proper receptacle installed by a qualified electrician.

CHECK with a qualified electrician or service person if you do not completely understand these grounding instructions, or if you are not sure the tool is properly grounded.

CIRCUIT CAPACITY

Make sure that the wires in your circuit are capable of handling the amperage draw from your machine, as well as any other machines that could be operating on the same circuit. If you are unsure, consult a qualified electrician. If the circuit breaker trips or the fuse blows regularly, your machine may be operating on a circuit that is close to its amperage draw capacity. However, if an unusual amperage draw does not exist and a power failure still occurs, contact a qualified technician or our service department.

EXTENSION CORDS

The use of an extension cord is not generally recommended for 220V equipment. If you find it necessary, use only 3-wire extension cords that have 3-prong grounding plug and a matching 3-pole receptacle that accepts the tool's plug. Repair or replace a damaged extension cord or plug immediately.

Make sure the cord rating is suitable for the amperage listed on the motor I.D. plate. An undersized cord will cause a drop in line voltage resulting in loss of power and overheating. The accompanying chart shows the correct size extension cord to be used based on cord length and motor I.D. plate amp rating. If in doubt, use the next heavier gauge. The smaller the number, the heavier the gauge.

AMPERES (AMPS)	EXTENSION CORD LENGTH			
	25 FEET	50 FEET	100 FEET	150 FEET
< 5	18	16	16	14
6 TO 10	18	16	14	12
10 TO 12	16	16	14	14
12 TO 16	14	12	* NR	* NR
* NR = Not Recommended				

UNPACKING AND PREPARATION FOR SET-UP & ASSEMBLY

SAFETY



Use caution and wear gloves when handling metal parts such as the belt clamps, which can cut if handled carelessly.

Models 10-210 and 10-210CF are heavy machines (165/222 lbs - shipping weight - 75 kg/101 kg.) Do not overexert. Arrange to have help nearby and ready for unpacking and set up.

The sound level of this machine is rated at approximately 85 to 95 db during operation. Make sure that adequate hearing protection is used and that the overall sound level within the working environment is taken into consideration.

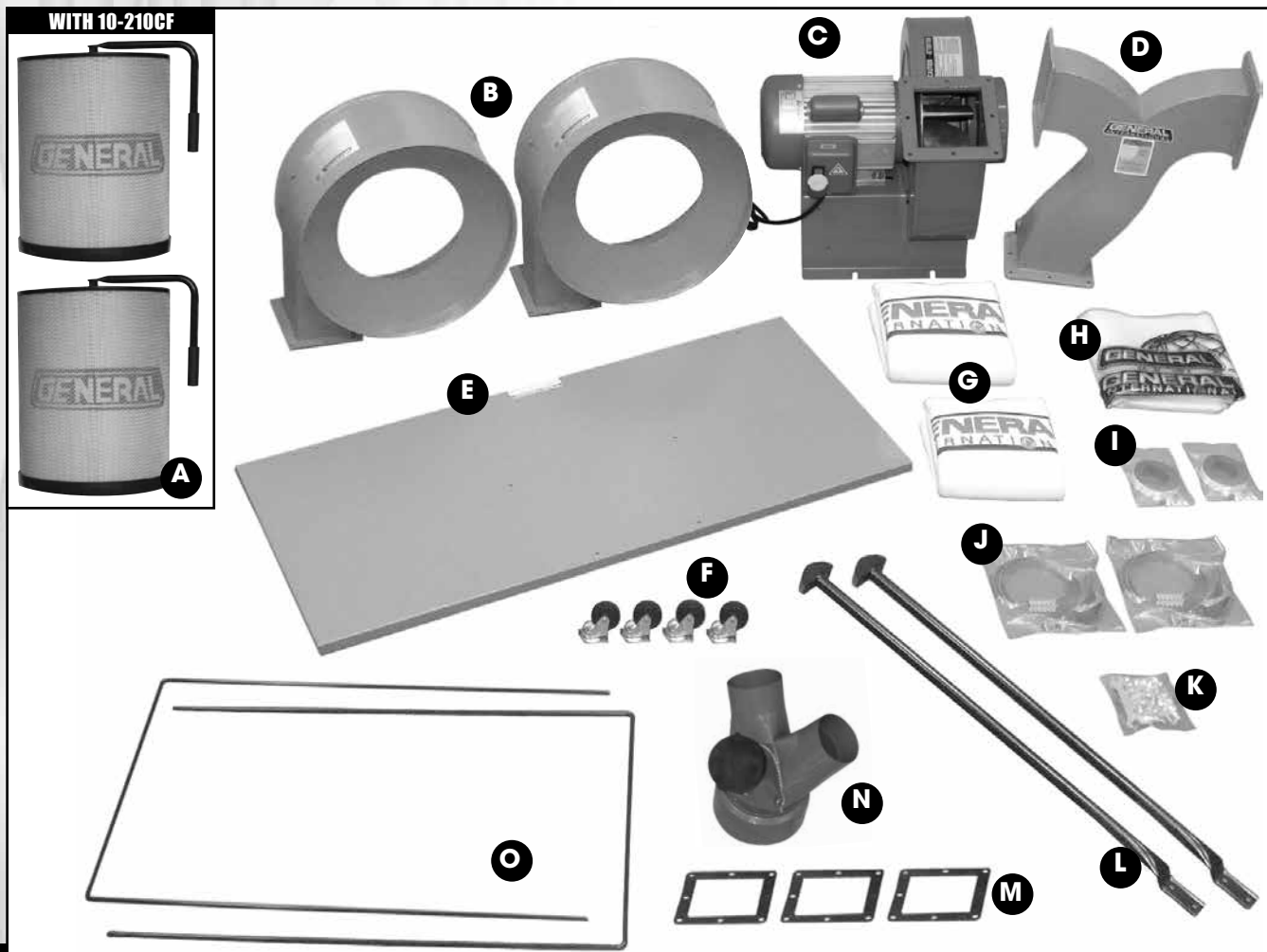
UNPACKING

Carefully unpack and remove the dust collector, its components and tools from its shipping container and check for missing or damaged items as per the list of contents below.

NOTE: Please report any damaged or missing items to your **GENERAL® INTERNATIONAL** distributor immediately.

LIST OF CONTENTS	QTY
A - FILTER CARTRIDGE (model 10-210CF only).....	2
B - DRUM	2
C - FAN/MOTOR ASSEMBLY	1
D - CONNECTOR	1
E - BASE PLATE.....	1
F - CASTER.....	4
G - FILTER BAG (model 10-210 only).....	2
H - COLLECTOR BAG.....	2

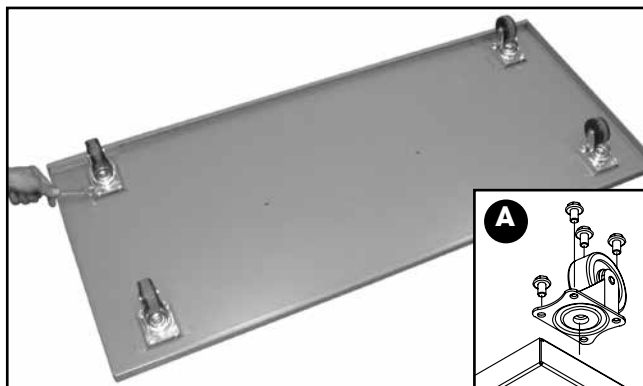
LIST OF CONTENTS	QTY
I - FOAM GASKET	2
J - BELT CLAMP	2
K - HARDWARE BAG.....	1
L - VERTICAL SUPPORT ROD	2
M - RUBBER GASKET.....	3
N - HOSE INLET (3-HOLE MANIFOLD)	1
O - BAG HANGER (model 10-210 only).....	2



ASSEMBLY INSTRUCTIONS



SERIOUS PERSONAL INJURY COULD OCCUR IF YOU CONNECT THE MACHINE TO THE POWER SOURCE BEFORE YOU HAVE COMPLETED THE INSTALLATION AND ASSEMBLY STEPS. DO NOT CONNECT THE MACHINE TO THE POWER SOURCE UNTIL INSTRUCTED TO DO SO.



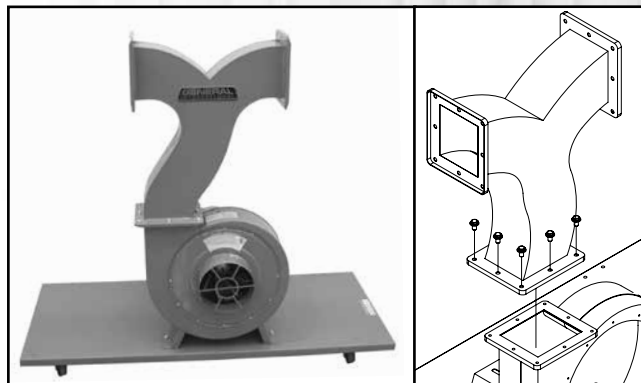
1. Place the base plate upside down and attach the 4 casters to the base using 16 hex head flange bolts (4 per caster) **A**. Tighten with the supplied 12 mm wrench.



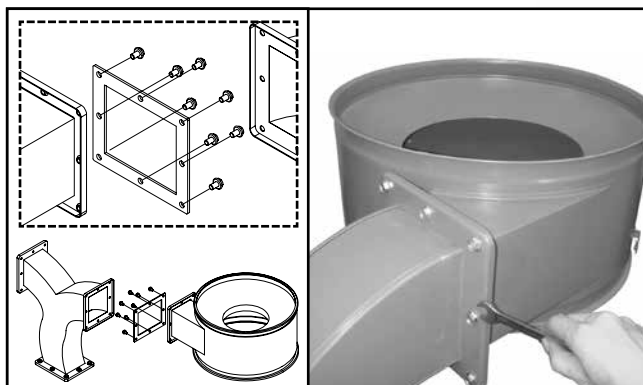
2. Turn the base right side up and secure the fan / motor assembly to the base as shown using 4 hex head flange bolts. Tighten with the supplied 12 mm wrench.



3. Install a rubber gasket on the opening of the fan / motor assembly outlet.



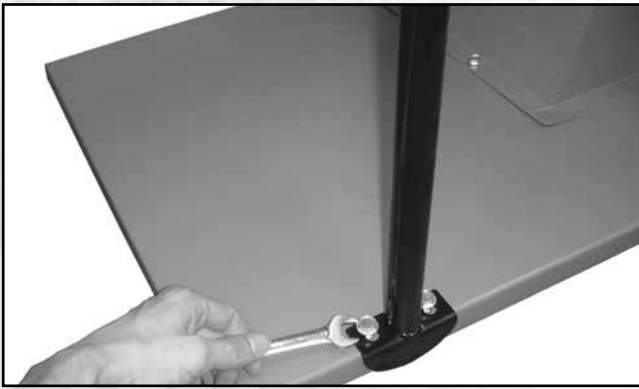
4. Attach the connector to the fan/motor assembly as shown using 8 hex head flange bolts. Tighten with the supplied 12 mm wrench.



5. Install a rubber gasket on one outlet of the connector, then attach one drum to the connector using 8 hex head bolts.



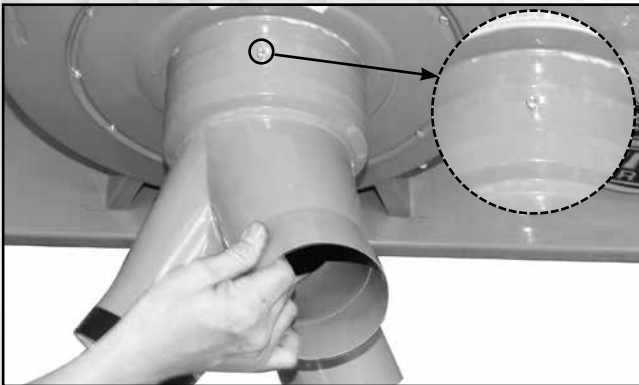
6. Repeat step 5 with the second drum and connector outlet.



7. Attach the two vertical support rods to the rear of the base plate using 4 hex head bolts (2 per supports). Tighten with the supplied 12 mm wrench.



8. With the help of an assistant line up the holes in the drums with the holes in the support rods and secure using 4 hex head bolts (2 per drum).

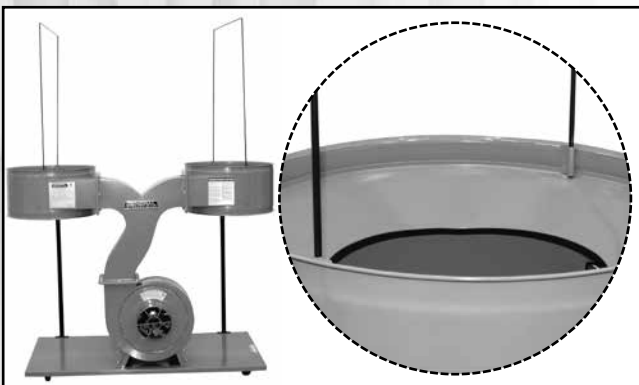


9. Fit the hose inlet (3-hole manifold) over the main air inlet as shown and secure it in place using the supplied pan head screw.



USE CAUTION AND WEAR GLOVES WHEN HANDLING METAL PARTS SUCH AS BELT CLAMPS, WHICH CAN CUT IF HANDLED CARELESSLY.

10. Attach a collector bag to the lower portion of both drums using a belt clamp. Before tightening the clamps make sure the metal strap is sitting in the groove on the lower portion of the drums to create an airtight seal between the drum and the bag.



INSTALL A FILTER BAG ON THE DRUMS – model #10-210 only

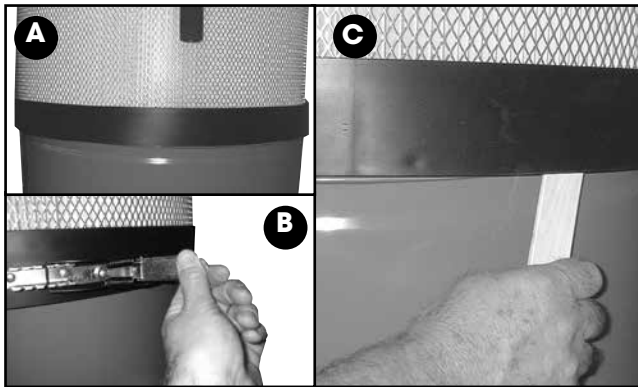
If you have purchased model # 10-210CF (with canister filter) skip ahead to step #13 on next page.

11. Install the 2 bag hangers onto the drums as shown.



USE CAUTION AND WEAR GLOVES WHEN HANDLING METAL PARTS SUCH AS BELT CLAMPS, WHICH CAN CUT IF HANDLED CARELESSLY.

12. Attach a filter bag to the upper portion of both drums using a belt clamp. Before tightening the clamps make sure the metal strap is sitting in the groove on the upper portion of the drum to create an airtight seal between the drum and the bag.

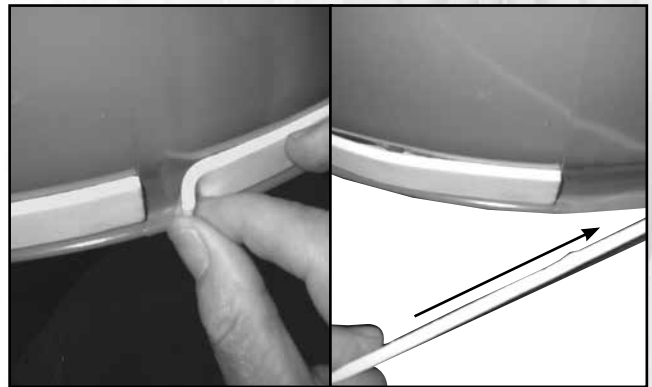


INSTALL A CANISTER FILTER ON THE DRUMS – #10-210CF only

If you have purchased model #10-210 (with filter bag) follow the instructions of steps 11 and 12 on previous page.

- 13.** Fit the canister filter onto the drum as shown **A** and use a belt clamp to hold the canister securely onto the drum **B**.

*Tip/Hint: To seat the canister on the rim of the drum, run a flat piece of wood (such as a ruler) between the drum and the black apron on the bottom of the canister **C**.*



Basic assembly is now complete and your dust collector is ready to be put into service. Once the unit is hooked up to an appropriate electrical connection, turn on the unit and check for air leaks around the bags (model 10-210) or canister filter (model 10-210CF). If there is an air leak, peel off the backing of the adhesive foam gasket and stick it onto the drum, making sure the gasket is sitting in the appropriate groove.

OPERATING INSTRUCTIONS

BASIC INSTRUCTIONS

Models 10-210 and 10-210CF 3 HP Dust Collector have been designed to capture, remove, and collect non-metallic dust and wood dust around the workshop and from woodworking machinery.



ALWAYS TURN ON THE DUST COLLECTOR BEFORE STARTING YOUR DUST PRODUCING MACHINE AND ALWAYS STOP THE DUST PRODUCING MACHINE BEFORE TURNING OFF THE DUST COLLECTOR.

BEFORE STARTING

1. To minimize airborne dust make sure that all hoses, fittings and clamps are secure and airtight.
2. For maximum system efficiency, make sure a cover is installed on any unused hose inlet openings.
3. Never operate the machine without the filter bag or canister and the collection bag properly installed.



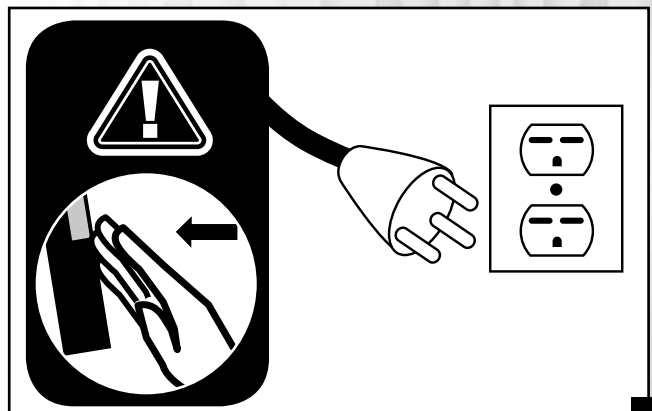
THE SOUND LEVEL OF THIS MACHINE IS RATED AT APPROXIMATELY 85-95 DB DURING OPERATION. MAKE SURE THAT ADEQUATE HEARING PROTECTION IS USED AND THAT THE OVERALL SOUND LEVEL WITHIN THE WORKING ENVIRONMENT IS TAKEN INTO CONSIDERATION.

CONNECTING TO A POWER SOURCE



TO REDUCE THE RISK OF SHOCK OR FIRE DO NOT OPERATE THE UNIT WITH A DAMAGED POWER CORD OR PLUG. REPLACE DAMAGED CORD OR PLUG IMMEDIATELY.

TO AVOID UNEXPECTED OR UNINTENTIONAL START-UP, MAKE SURE THAT THE POWER SWITCH **A IS IN THE OFF POSITION BEFORE CONNECTING TO A POWER SOURCE.**



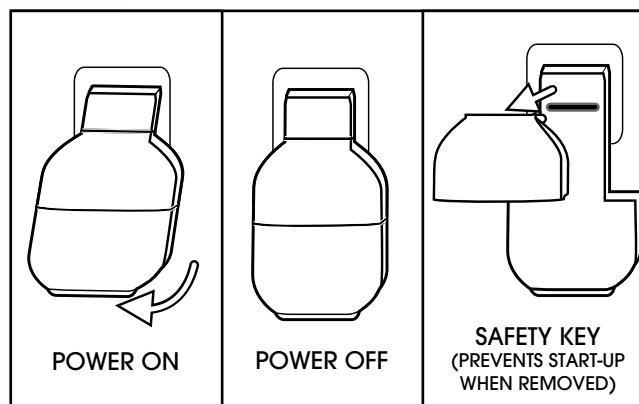
Once the assembly steps have been completed, plug the power cord into an appropriate outlet. Refer back to the section entitled "Electrical Requirements" and make sure all requirements and grounding instructions are followed.

ON/OFF SWITCH

Models 10-210 and 10-210CF are equipped with a simple “rocker style” On/Off switch featuring a removable lock out safety key.

To prevent unauthorized use or unintentional start-up, remove the safety key and store it in a safe place whenever the dust collector is not in use.

To start the dust collector, insert the safety key and pull up the switch. To stop the machine, push down on the power switch.



REMOVE THE SWITCH KEY WHENEVER THE DUST COLLECTOR IS NOT IN USE. PLACE IT IN A SAFE PLACE AND OUT OF THE REACH OF CHILDREN.

MAINTENANCE & SERVICING



MAKE SURE THE SWITCH IS IN THE “OFF” POSITION AND UNPLUG THE UNIT FROM THE POWER SOURCE BEFORE PERFORMING ANY MAINTENANCE.

The M1 version of this machine operates on **220 V single phase power**; if you suspect any electrical problems call a qualified electrician to do the verification of the electrical circuit or the machine. If you need further help with your dust collector contact your **General® International** distributor or call our **Technical Support at (514) 326-1161**.

- **All bearings are sealed and permanently lubricated. No further lubrication is needed.**
- **Periodically inspect all hardware, fittings and fasteners that may have loosened due to vibration - retighten as needed.**
- **Keep the outside of the unit clean and wipe off excessive dust or dirt with a dry rag.**
- **Clean the filters on a regular basis and replace as needed, or if damaged or perforated.**
- **Periodically inspect inside all pipes, fittings, blast gates, and connectors for accumulated dust build-up or other obstructions and clean as needed. Remove sections and vacuum or manually remove debris as needed.**
- **Check and if necessary replace all damaged parts or components.**
- **Do not operate with a damaged canister filter or bag - replace damaged filter or bag immediately.**
- **Periodically inspect the power cord and plug for damage. If necessary replace the power cord and plug at the first signs of visible damage.**
- **Use only recommended parts and accessories. The use of parts or accessories NOT recommended by GENERAL® INTERNATIONAL may result in a risk of injury or damage to the machine.**

CLEANING OR REPLACING THE FILTER BAGS (model #10-210 only)



TURN THE SWITCH TO THE "OFF" POSITION AND UNPLUG THE UNIT FROM THE POWER SOURCE BEFORE CLEANING OR REPLACING FILTER BAGS OR BEFORE PERFORMING ANY MAINTENANCE.

Tip/Hint: To avoid potentially costly down-time, consider keeping a spare filter bag on hand and nearby for use if needed.

After a period of time, depending on the frequency of use, the filter bag may become clogged and affect airflow as well the overall efficiency of the unit. Should you notice a drop in the efficiency or performance of the unit, it may be a sign that it is time to clean the filter bag. If so, proceed as follows:

1. Turn off and unplug the machine.
2. Unclip the belt clamp and remove the bag from the machine.
3. Clean the dust from inside the filter bag using a vacuum.
4. For extreme cases, after the initial cleaning with a vacuum, turn filter bag inside out and vacuum a second time, laying the bag on a flat hard surface (such as a table or workbench) and slowly passing the vacuum nozzle over the entire surface area.
5. Re-install the bag and reattach the clamp.

Note: Filter bags can also be machine washed (gentle cycle only) in cold or warm water. Do not use hot water or detergent. Make sure the bag has completely dried before reinstalling on the machine. Make sure to remove the belt clamp from the bag before washing!



EMPTYING OR REPLACING THE CANISTER FILTERS (model #10-210CF only)



TURN THE SWITCH TO THE "OFF" POSITION AND UNPLUG THE UNIT FROM THE POWER SOURCE BEFORE CLEANING OR REPLACING CANISTER FILTERS OR BEFORE PERFORMING ANY MAINTENANCE.

After a period of time depending on the frequency of use, the canister filters may become clogged and affect airflow as well as the overall efficiency of the unit. Should you notice a drop in the efficiency or performance of the unit, it may be a sign that it is time to clean the filters. If so, proceed as follows:

1. Turn off and unplug the machine.
2. For basic cleaning, simply rotate the handle on the top of the canister several rotations. The internal flap will rub against the corrugated inner filter and shake free any built-up dust from inside the filter.
3. For a more thorough cleaning, after rotating the handle, unclip the belt clamps and remove the canisters from the machine and place it on the ground upside down.
4. Vacuum the inside of the canisters to remove any remaining dust from inside.
5. Reinstall the canisters and reattach the clamp.



CLEANING OR REPLACING THE COLLECTOR BAGS



TURN THE SWITCH TO THE "OFF" POSITION AND UNPLUG THE UNIT FROM THE POWER SOURCE BEFORE CLEANING OR REPLACING COLLECTOR BAGS OR BEFORE PERFORMING ANY MAINTENANCE.

Note: Depending on your needs, shop situation and local regulations collections bags can be emptied and reused or disposed (with their contents) and replaced with a new bag.

1. Turn off and unplug the machine.
2. Unclip the bag clamps and remove the bags from the machine.
3. Empty the bags (or simply dispose of the bag and its contents and replace with a new bag) disposing of the contents in a safe and responsible manner that complies with all local codes and regulations regarding waste disposal.
4. Reinstall the bags and reattach the clamps.



RECOMMENDED OPTIONAL ACCESSORIES

We offer a large variety of products for increased convenience, productivity, accuracy and safety when using your dust collector. Here's a small sampling of optional accessories available from your local General International dealer.

For more information about our products, please visit our website at www.general.ca



4" x 10' Polyethylene Flexible Hose - #10-410

4" x 50' Polyethylene Flexible Hose - #10-130

6" x 50' Polyethylene Flexible Hose - #10-140



4" x 50' heavy-duty polyethylene flexible hose #10-130



Dust Collection Fire Protection Cage - #10-430

Modular panel design for ease of assembly, with open top for easy hose access. All steel construction - 100% non flammable. A quick economical solution to most local safety codes.



1 Micron Canister Filter #10-106C



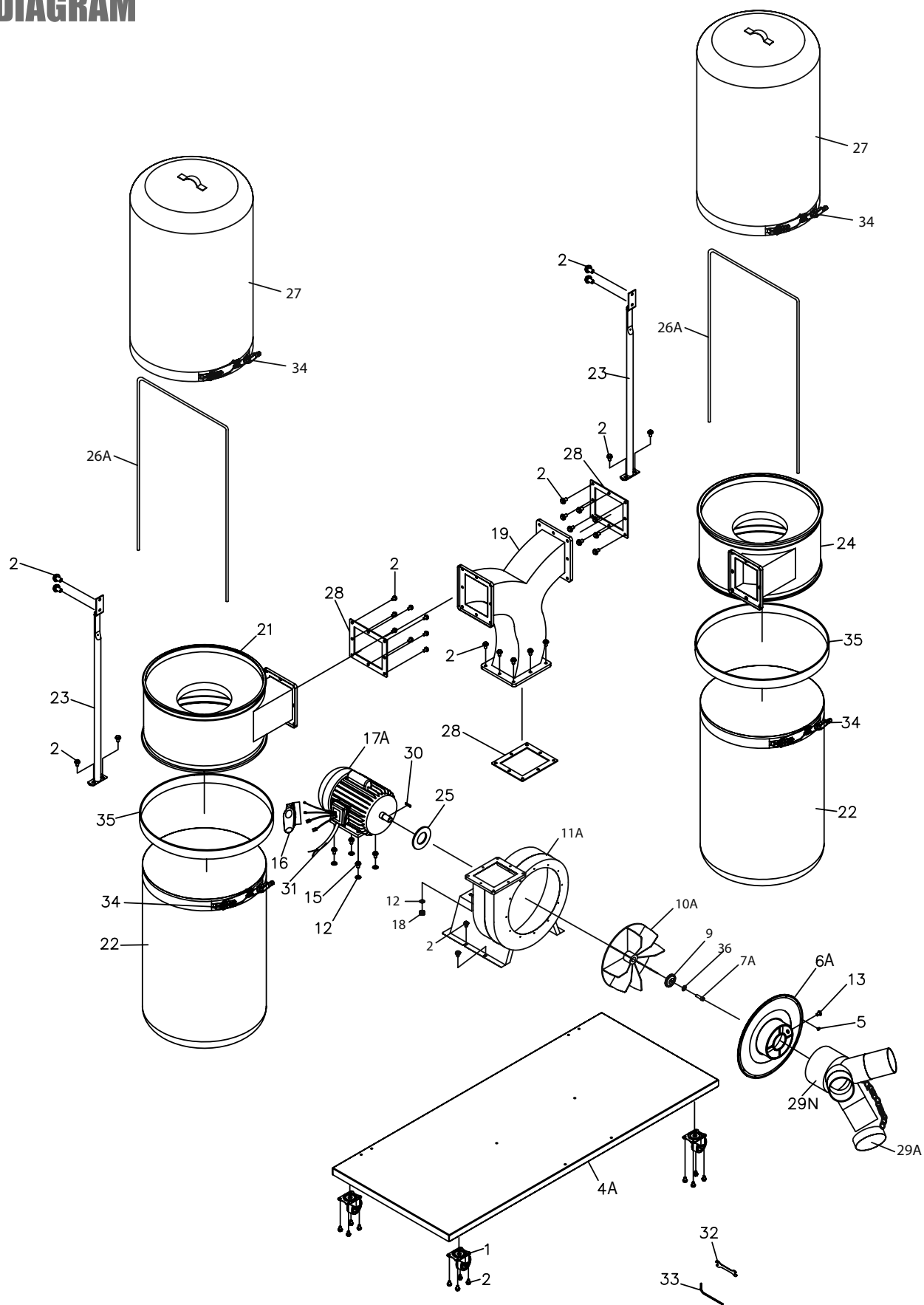
Clear Plastic Collector Bag - #10-120



2 Micron Filter Bag #10-115

Notes

DIAGRAM



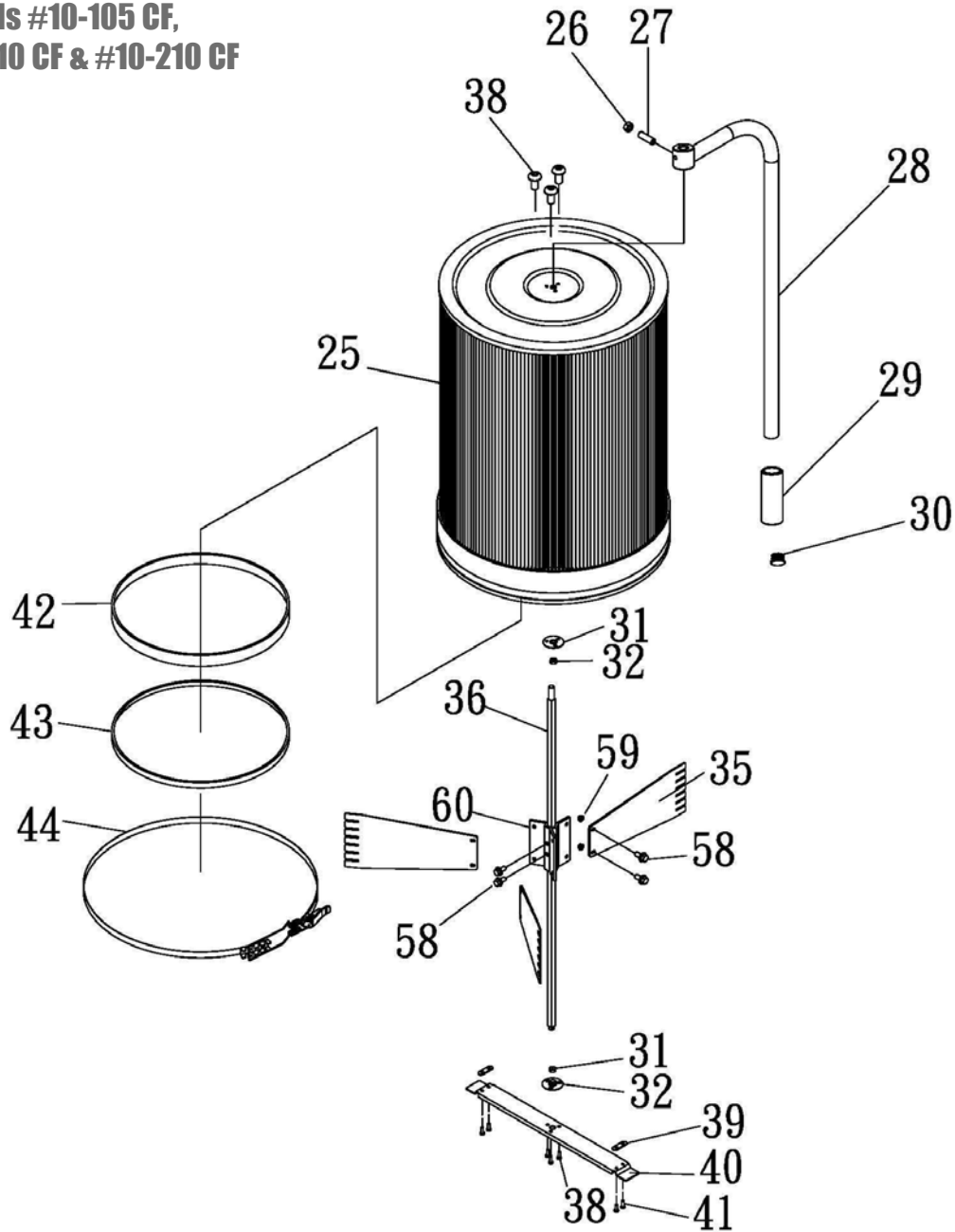
PARTS LIST
10-210 & 10-210CF

REF. NO.	PART NO.	DESCRIPTION	SPECIFICATION	QTY
1	10210-01	CASTER		4
2	10210-02	HEX. HEAD BOLT	5/16" X 1/2" L	52
4A	10210-04A	BASE PLATE		1
5	10210-05	PAN HEAD SCREW	3/16" X 3/8" L	12
6A	10210-06A	INLET COVER	7"	1
7A	10210-07A	HEX. SOCKET HEAD SCREW	M6 X 1 X 30MM L.H.	1
9	10210-09	WASHER		1
10A	10210-10A	FAN		1
11A	10210-11A	COLLECTOR BODY		1
12	10210-12	WASHER	5/16"	8
13	10210-13	PAN. HEAD SCREW	3/16" X 3/8" L	1
15	10210-15	HEX HEAD BOLT	5/16" X 1" L	4
16	10210-16	SWITCH		1
17A	10210-17A	MOTOR		1
18	10210-18	NUT	5/16"	4
19	10210-19	CONNECTOR		1
21	10210-21	LEFT DRUM		1
22	10210-22	COLLECTOR BAG (ITEM #10-120)		2
23	10210-23	DRUM SUPPORT		2
24	10210-24	RIGHT DRUM		1
25	10210-25	RUBBER GASKET		1
26A	10210-26A	UPPER BAG SUPPORT		2
27	10210-27	FILTER*		2
28	10210-28	RUBBER GASKET		3
29N	10210-29N	INLET FITTING	6" X 4" X 4" X 4"	1
29A	10210-29A	CAP		2
30	10210-30	KEY		1
31	10210-31	POWER CORD	7MM X 7MM X 30MM	1
32	10210-32	OPEN END WRENCH	12MM	1
33	10210-33	ALLEN KEY	5MM	1
34	10210-34	BAG CLAMP		4
35	10210-35	FOAM GASKET		2
36	10210-36	LOCK WASHER	1/4"	1

*Filter bag **#10-115** for model 10-210 or Canister filter **#10-106C** for model 10-210CF.

Notes

**Canister supplied on
Models #10-105 CF,
#10-110 CF & #10-210 CF**



**PARTS LIST
10-106C**

PART #	DESCRIPTION	SPEC.	QTY	PART #	DESCRIPTION	SPEC.	QTY
10106C-25	CANISTER FILTER	DIA.500MM	1	10106C-38	ROUND HEAD SCREW	M5X6	6
10106C-26	NUT	5/16"	1	10106C-39	FIXING PLATE		2
10106C-27	SET SCREW	5/16"X3/4"	1	10106C-40	BOTTON FIXING PLATE		1
10106C-28	HANDLE		1	10106C-41	PHILLIPS HEAD SCREW	M5X15	4
10106C-29	HANDLE SPONGE	7/8"	1	10106C-42	FOAM GASKET	3X20X1560	1
10106C-30	CAP	3/4"	1	10106C-43	FOAM GASKET	5X42X1565	1
10106C-31	CANISTER FIXING PLATE		2	10106C-44	BELT CLAMP	500CK	1
10106C-32	BEARING	1206	2	10106C-58	FLANGE BOLT	M5X12	8
10106C-35	FLAPPER		3	10106C-59	NUT	M5	6
10106C-36	SPINDLE		1	10106C-60	FLAPPER BRACKET		1

MODEL 10-210 / 10-210CF



8360 Champ-d'Eau, Montreal (Quebec) Canada H1P 1Y3

Tel.: (514) 326-1161

Fax: (514) 326-5565 - Parts & Service / Fax: (514) 326-5555 - Order Desk

orderdesk@general.ca
www.general.ca

IMPORTANT

When ordering replacement parts, always give the model number, serial number of the machine and part number. Also a brief description of each item and quantity desired.