



Model: **8750**

Product Type:

**WATERBORNE DRYING FAN WITH STAND**



## WARNING



Study, understand and follow all instructions provided with this product. Read these instructions carefully before installing, operating, servicing or repairing this tool. Keep these instructions in a safe accessible place.

### INTENDED USE OF THE TOOL

The Astro 8750 - Waterborne Drying Fan is specially designed to speed-up the drying process for(of) waterborne paints. Do not use this item outside of the designed intent. Never modify the tool for any other purpose or use.



## WARNING



**Caution: To help prevent personal injury**

- Normal use of this product is likely to expose the user to dust and/or microscopic particles containing chemicals known to the State of California to cause cancer, birth defects or other reproductive harm. Always wear appropriate safety equipment and clothing when using this product. Study, understand and follow all instructions provided with this product. Failure to read and follow all warnings and operating instructions may result in damages and serious injury or death.
- Always wear ANSI approved goggles when using this product. (Users and Bystanders).
- Never use this tool for any application other than for which it was designed.
- Only use accessories designed for this tool.
- Never alter or modify this tool in any way.
- Improper operation and/or maintenance of the tool, modification of the tool, or use of the tool with accessories not designed for it could result in serious injury or death.
- Always select the correct accessories of the correct size and design for the job that you are attempting to perform.
- Always work in a clean, safe, well-lit, organized and adequately equipped area.
- Do not begin repairs without assurance that vehicle is in secure position, and will not move during repair.

### PRODUCT INFORMATION:

- Fan has specially designed blades to speed-up the drying process for waterborne and other types of paints
- Fan mounting design allows for multiple fan positions allowing air flow to be directed to desired area
- Fan will produce the maximum output with minimal input
- Fan has a longer life expectancy compared to most other types of fans available in the market
- Blade, shroud and motor case are made of Stainless Steel. (static free)
- Unit motor does not require oiling thereby eliminating Booth contamination
- Tripod stand adjusts the fan height from 50" to 69"
- Unit regulator preset to 50psi to guarantee long motor life

### SPECIFICATIONS:

Fan motor Speed: 200-1800rpm  
Fan Output: Up to 1200cfm  
Overall Height: 69" (175cm)  
Net Weight Fan: 10.35lbs (4.7kgs)

Net Weight Stand: 7lbs (3.2kgs)  
Air Consumption: 3.4cfm to 8 cfm  
Working Air Pressure: Up to 50psi



**Astro Pneumatic  
Tool Company**

[www.astrotools.com](http://www.astrotools.com)

### 1 YEAR LIMITED WARRANTY

- Astro Pneumatic Tool Co. warrants our products to the original user against defective material or workmanship for a period of 1 year (except where noted on our price schedule) from the date of 1st use. Astro reserves the right to determine whether the product failed because of defective material, workmanship or other causes and to charge back for missing parts. Astro Pneumatic Tool Co., at its discretion, will repair products covered under this warranty free of charge. The distributor should direct the original user to return the product (with the exceptions listed below) with the distributor's name, address, adequate proof of date of purchase or a copy of warranty card, and a short note explaining the problem. **Failures caused by accident, alteration, or misuse are not covered by this warranty.**
- If one part of this product fails, please do not return the entire product. Astro will replace free of charge component parts of this product that fail within 1 year of first use by the original user. Items included in this category include but are not limited to kits, hand tool kits and any other product where there are multiple items or components that make up the unit. Please contact the phone number below in order to obtain the replacement components covered under warranty.
- Astro Pneumatic Tool Co. or its authorized service representatives must perform all warranty repairs. Any repair to the product by unauthorized service representatives voids this warranty. The rights under this warranty are limited to the original user and may not be transferred to subsequent owners.
- This warranty is in lieu of all other warranties, expressed or implied, including warranties of merchantability and fitness for a particular purpose. Some states do not allow the exclusion of limitations of incidental or consequential damages so the above limitations may not apply to you.



**PLEASE DO NOT RETURN ANY PRODUCT WITHOUT CALLING  
1-800-221-9705 FOR INSTRUCTIONS**



### Unpacking

When unpacking, check the parts diagram and part number listing on page 2 and 3 to make sure all parts are included. If any parts are missing or damaged, please contact your distributor or Astro Pneumatic at # 800-221-9705.

### ASSEMBLY INSTRUCTIONS

- 1) Remove parts from the box and Verify that all parts of the unit are included.
- 2) To avoid booth contamination, make sure that you have a 3/8" filtered air line to operate the motor.
- 3) Attach the Fan Bracket to the stand with the set screw. (image#1)
- 4) Attach the Side Knobs to the bracket using the following sequence: Flat Washer, Bracket, Flat Washer, Lock Washer and Side Knob Handles.
- 5) Mount the regulator unit with the knob facing down. (image#1)
- 6) Attach a 3/8ID air hose assembly into the air entry fitting on the regulator (In order to avoid air leaks Teflon tape should be used). (image#1)
- 7) Push the short hose provided into the yellow quick coupler on the left side of the regulator. Insert the other end into the nearest air inlet. (image #1)  
To avoid damage to the air motor, Do not alter the regulator set up provided with this unit.
- 8) Connect the long Air Hose provided to the remaining quick coupler fitting on the back of the fan. This air hose serves as an exhaust for the air motor. Secure hose so that the air exhaust or the hose itself does not interfere with the area where paint is being applied.
- 9) This unit comes with a regulator preset to 50psi to guarantee proper psi input. Working pressure for the fan can be adjusted up to 50PSI on the diaphragm regulator.
- 10) THIS UNIT IS PROVIDED WITH AN OIL FREE AIR MOTOR. Do not add oil to the motor or booth contamination will occur.



image #1

**DO NOT DISCARD – GIVE TO USER**



**Astro Pneumatic  
Tool Company**

372 Old US Highway 52 South  
Mount Airy, NC 27030

Model:

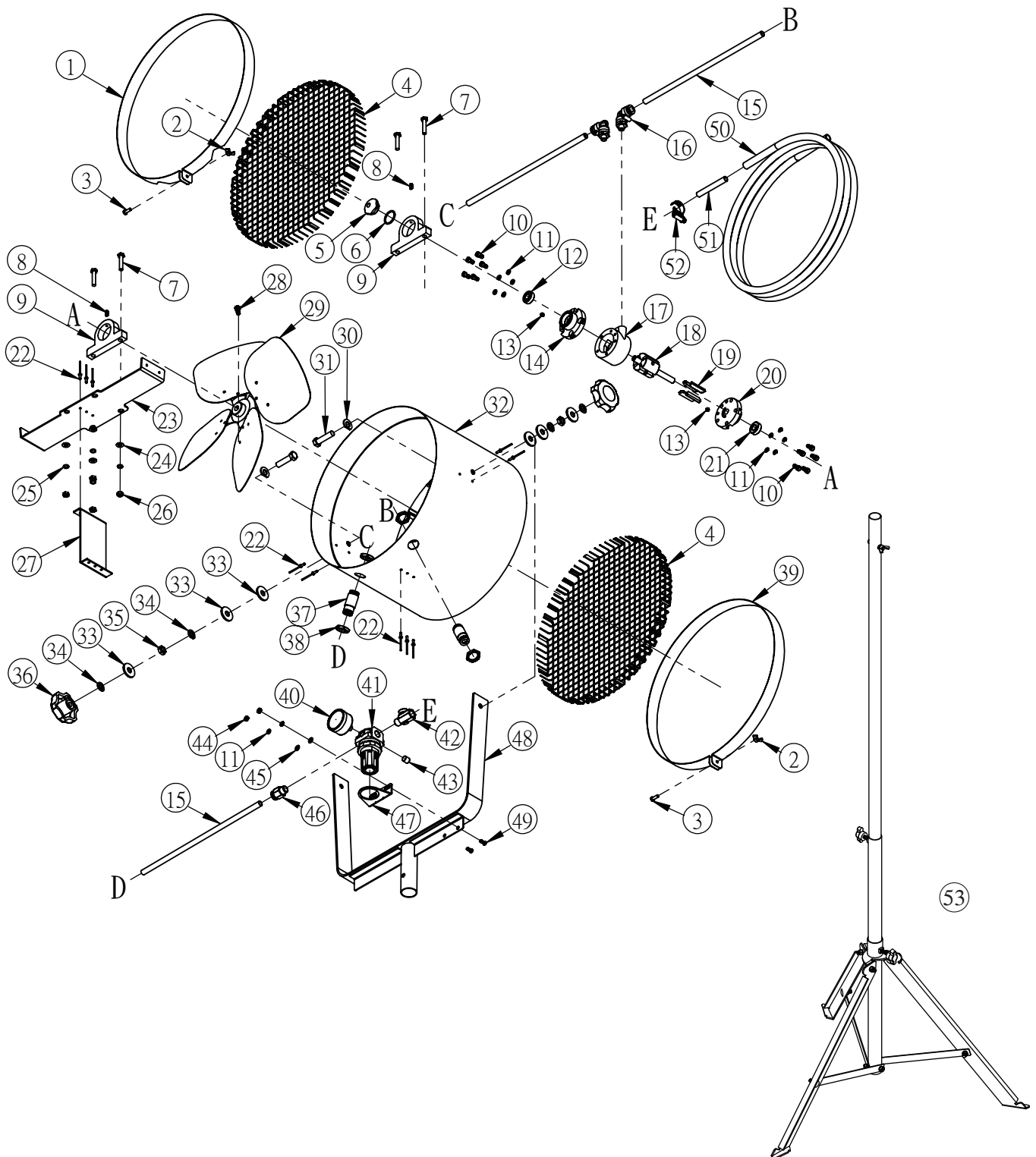
**8750**

Product Type:

**WATERBORNE  
DRYING FAN**

## PARTS BREAKDOWN

Call 1.800.221.9705 for questions concerning performance of the product or other inquiries.





**Astro Pneumatic  
Tool Company**

372 Old US Highway 52 South  
Mount Airy, NC 27030

Model:

**8750**

Product Type:

**WATERBORNE  
DRYING FAN**

## PARTS BREAKDOWN

Call 1.800.221.9705 for questions concerning performance of the product or other inquiries.

### Parts List

Index	Part No.	Description	Qty
1	8750F-01	Safety Guard Retaining Ring	1
2	8750F-02	Wing Nut	2
3	8750F-03	Screw	2
4	8750F-04	Safety Guard	2
5	8750F-05	Back Cover	1
6	8750F-06	O-Ring(P22)	1
7	8750F-07	Screw(M6x30)	4
8	8750F-08	Set Screw(M5x10)	2
9	8750F-09	Air Motor Mounting Block	2
10	8750F-10	Screw(M5x10)	10
11	8750F-11	Spring Washer	12
12	8750F-12	Bearing(R6zz)	1
13	8750F-13	Set Screw(M5x5)	2
14	8750F-14	Rear End Plate	1
15	8750F-15	Tube A	3
16	8750F-16	Quick connect Fitting	2
17	8750F-17	Cylinder	1
18	8750F-18	Rotor	1
19	8750F-19	Rotor Blade	4
20	8750F-20	Front End Plate	1
21	8750F-21	Bearing(R6zz)	1
22	8750F-22	1/8" Rivet	10
23	8750F-23	Air Motor Mount Bracket "A"	1
24	8750F-24	Washer	4
25	8750F-25	Spring Washer	4
26	8750F-26	Nut(M6)	4
27	8750F-27	Air Motor Mount Bracket "B"	1

Index	Part No.	Description	Qty
28	8750F-28	Screw(M6x12)	1
29	8750F-29	Fan Blade	1
30	8750F-30	Washer	2
31	8750F-31	Screw	2
32	8750F-32	Fan Housing Assembly	1
33	8750F-33	Washer	6
34	8750F-34	Spring Washer	4
35	8750F-35	Nut	2
36	8750F-36	Knob	2
37	8750F-37	Quick Connect Fitting	2
38	8750F-38	Nut	4
39	8750F-39	Safety Guard Retaining Ring	1
40	8750F-40	Air Gauge	1
41	8750F-41	Pressure Air Regulator	1
42	8750F-42	Air Flow valve	1
43	8750F-43	Pipe Plug	1
44	8750F-44	Nut(M5)	2
45	8750F-45	Washer	2
46	8750F-46	Quick Connect Fitting	1
47	8750F-47	Air Regulator Mounting Bracket	1
48	8750F-48	Fan Mounting Bracket	1
49	8750F-49	Screw (M5x10)	2
50	8750F-50	Tube C(300cm)	1
51	8750F-51	Tube B	1
52	8750F-52	Tube Clamp	1
53	8750S	Stand	1