



ATD-2088

6" RANDOM ORBITAL SANDER INSTRUCTION MANUAL

1. Please check tightness of all parts of the tool, and inspect and be sure that it is in good condition before each use.
2. For best results and to prolong the tool life, install a filter and a lubricator/oiler at the air inlet.
3. The best pressure on tool during operation is from 10 lbf to 15 lbf (5 kgf/cm³ to 7 kgf/cm³)
4. **ALWAYS** disconnect the air supply when replacing the sand paper or the backing pad.
5. **ALWAYS** wear eye protection, dust mask and gloves during operation.
6. To avoid fatigue, take breaks periodically. 30 minute intervals are suggested.
7. **NEVER** let tool rotate freely (without load) at high speeds to avoid possible injury to human body and possible tool damage.
8. **NEVER** touch the rotating part of the tool with hand or body during operation.
9. **ALWAYS** be sure that the sanding pad is attached flat on the surface of the backing pad before starting sanding job. (Refer to Illustration 1)

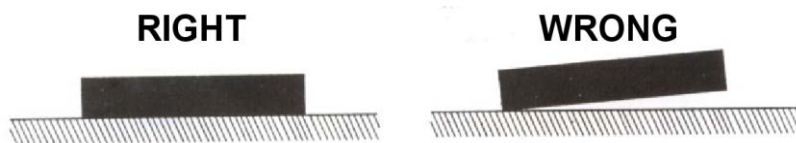
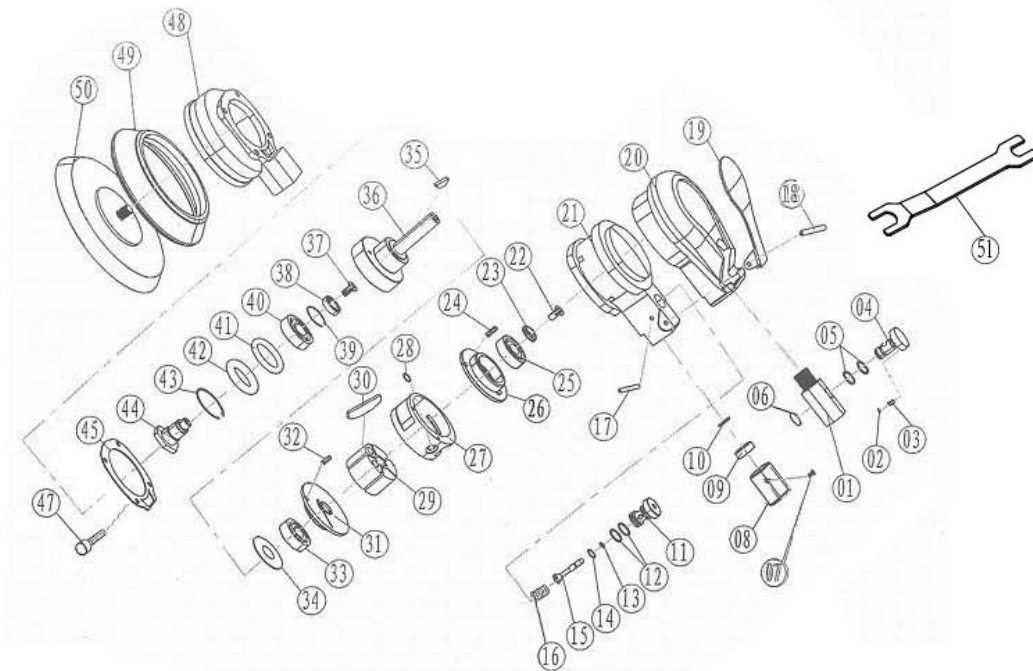


Illustration 1

10. If you notice any irregular sound or vibration during operation, **STOP USING THE TOOL IMMEDIATELY** and check and repair the tool before using again.
11. Be sure to use clean compressed air for operation. Use an air filter in-line with your air supply to clean impurities out of the compressed air.
12. Before use, lubricate with air tool oil and run the tool run slowly for 20 minutes. Lubricate regularly after each use, and at suggested intervals of 30 minutes during use to maintain tool life. An auto lubricator/oiler is recommended.
13. Dirt inside the motor may result in slow rotation and less power of the tool. If this happens, first disassemble the regulator and press the trigger. Then drop 10-15 drops of air tool oil from the air inlet into the motor. Restart the motor within 30-40 minutes by re-fitting the air source and having the motor rotating at low speed for 1-2 minutes. **DO NOT USE GASOLINE, KEROSENE, OR ANY OTHER CAUSTIC CLEANERS** as they will cause damage to your tool.
14. Drain the water out of the air compressor and air hose after each operation.

ATD®

ATD-2088



ITEM#	ORDERING PART#	PART DESCRIPTION
1	PRT2088-01	AIR STRAINER
2	PRT2088-02	DENTENT DW=3
3	PRT2088-03	DENTENT SPRING
4	PRT2088-04	REVERSE VALVE
5	PRT2088-05	O-RING 5.6x1.8
6	PRT2088-06	SNAP-RETAINER
7	PRT2088-07	SCREW M4x8
8	PRT2088-08	MUFFLER
9	PRT2088-09	MUFFLER CONNECTOR
10	PRT2088-10	O-RING 6.7x1.8
11	PRT2088-11	VALVE CORE
12	PRT2088-12	O-RING 8.5x1.8
13	PRT2088-13	O-RING 2x1.0
14	PRT2088-14	O-RING 4x1.5
15	PRT2088-15	VALVE STEM
16	PRT2088-16	VALVE SPRING
17	PRT2088-17	PIN 3x22
18	PRT2088-17	PIN 3x22
19	PRT2088-19	TRIGGER
20	PRT2088-20	HOUSING
21	PRT2088-21	GRIP
22	PRT2088-22	SCREW
23	PRT2088-23	WASHER
24	PRT2088-24	PIN 3x14
25	PRT2088-25	BEARING

ITEM#	ORDERING PART#	PART DESCRIPTION
26	PRT2088-26	REAR PLATE
27	PRT2088-27	CYLINDER
28	PRT2088-28	O-RING 6.7x1.8
29	PRT2088-29	ROTOR
30	PRT2088-30	VANE
31	PRT2088-31	FRONT PLATE
32	PRT2088-32	PIN 3x7
33	PRT2088-33	BEARING 6000Z
34	PRT2088-34	WASHER
35	PRT2088-35	HALF ROUND SHAFT
36	PRT2088-36	ANVIL
37	PRT2088-37	SCREW M5x8
38	PRT2088-38	BEARING (1680/68ZZ)
39	PRT2088-39	RETAINER
40	PRT2088-40	BEARING 6001Z
41	PRT2088-41	DUSTPROOF GASKET
42	PRT2088-42	BEARING TRAY
43	PRT2088-43	SPRING RETAINER
44	PRT2088-44	TILTING AXLE
45	PRT2088-45	GASKET
47	PRT2088-47	HEX SCREW
48	PRT2088-48	COVER
49	PRT2088-49	DUST COVER
50	PRT2088-50	BACKING PAD
51	PRT2088-51	SPANNER WRENCH

ALSO AVAILABLE:

PRT2088-SK - SERVICE KIT - INCLUDES ITEMS 02, 03, 05, 06, 10, 12, 13, 14, 23, 25, 30 (x5), 33 & 45