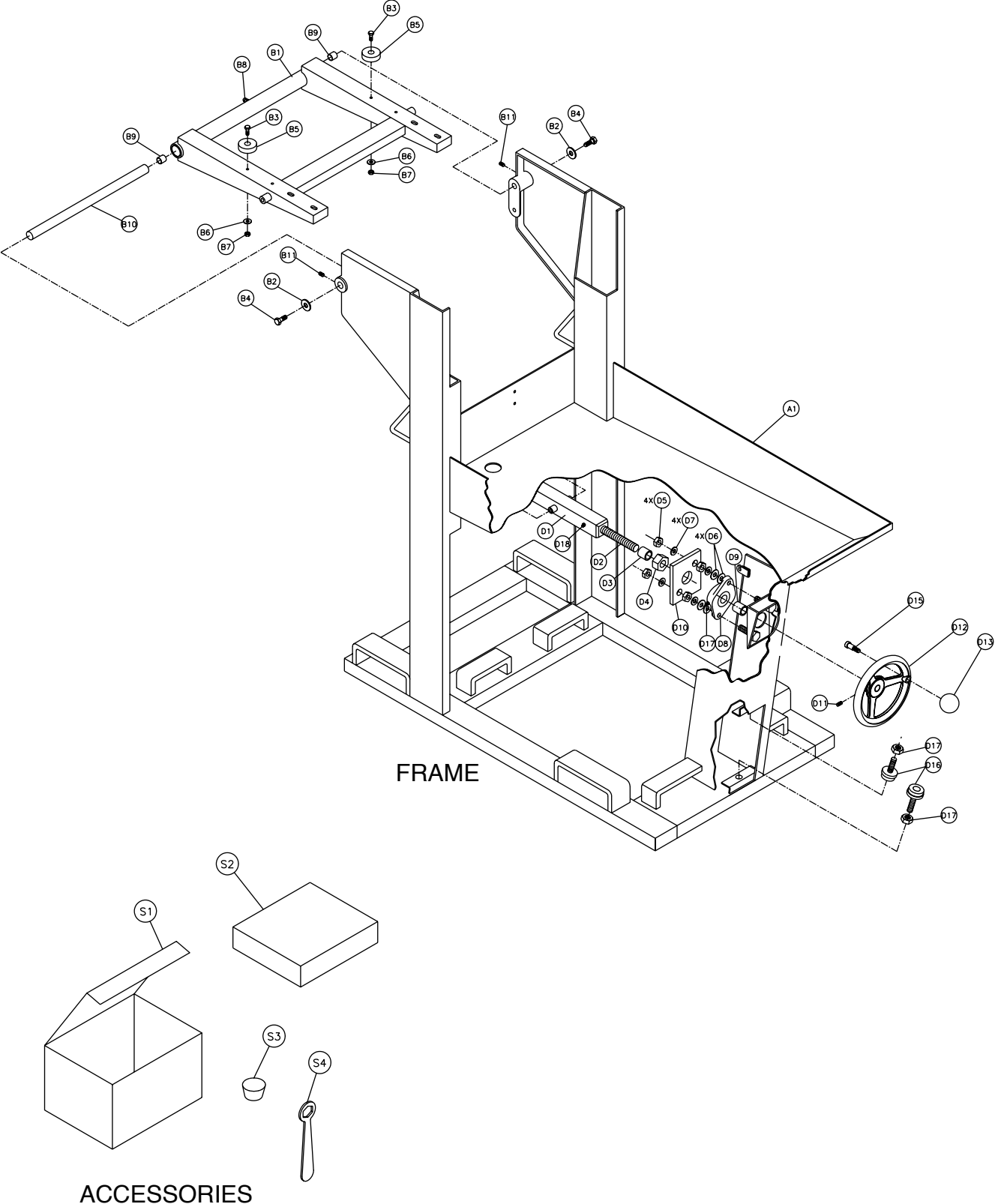


MK-5000 GAS SERIES OWNER'S MANUAL PARTS LIST & OPERATING INSTRUCTIONS

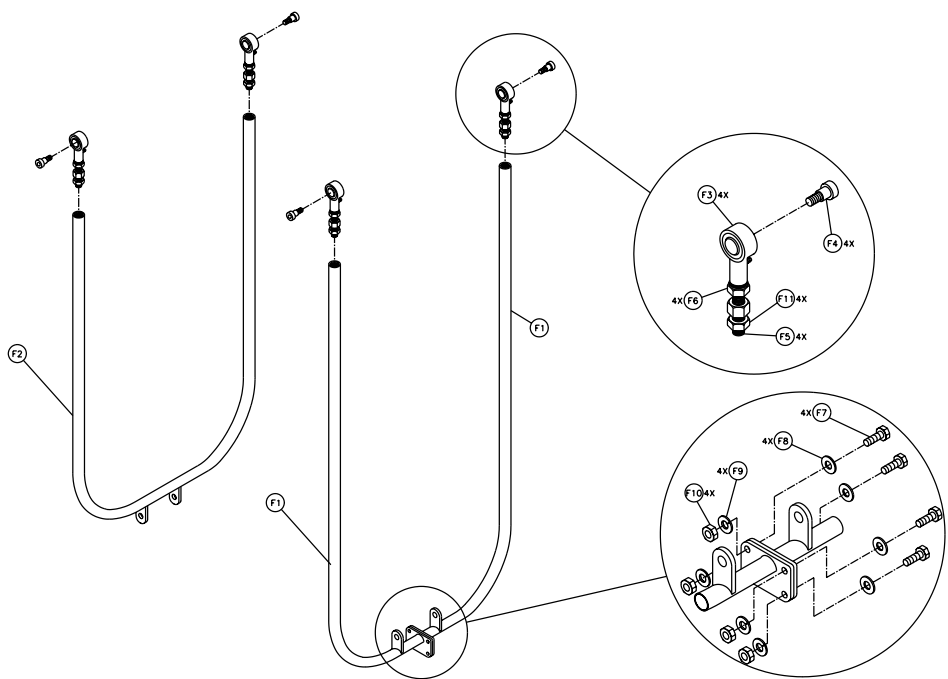


Revision 108	04.2015
Manual Part# 160958	

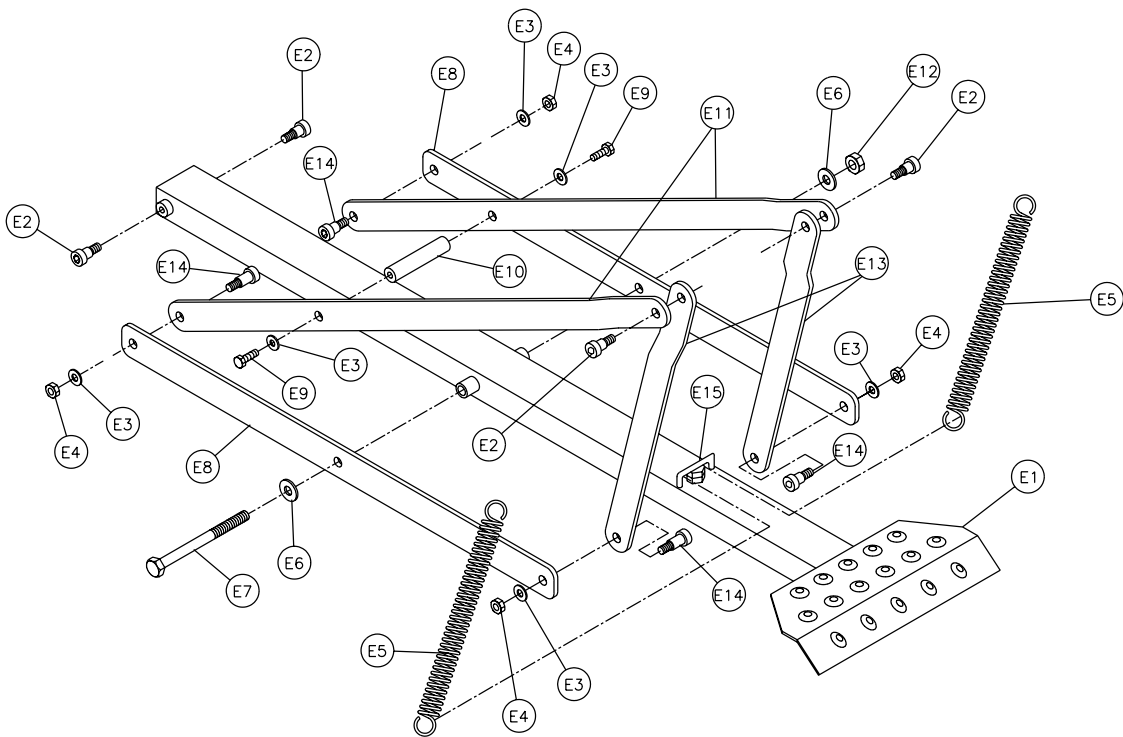
Caution: Read all safety and operating instructions before using this equipment. This parts list **MUST** accompany the equipment at all times.



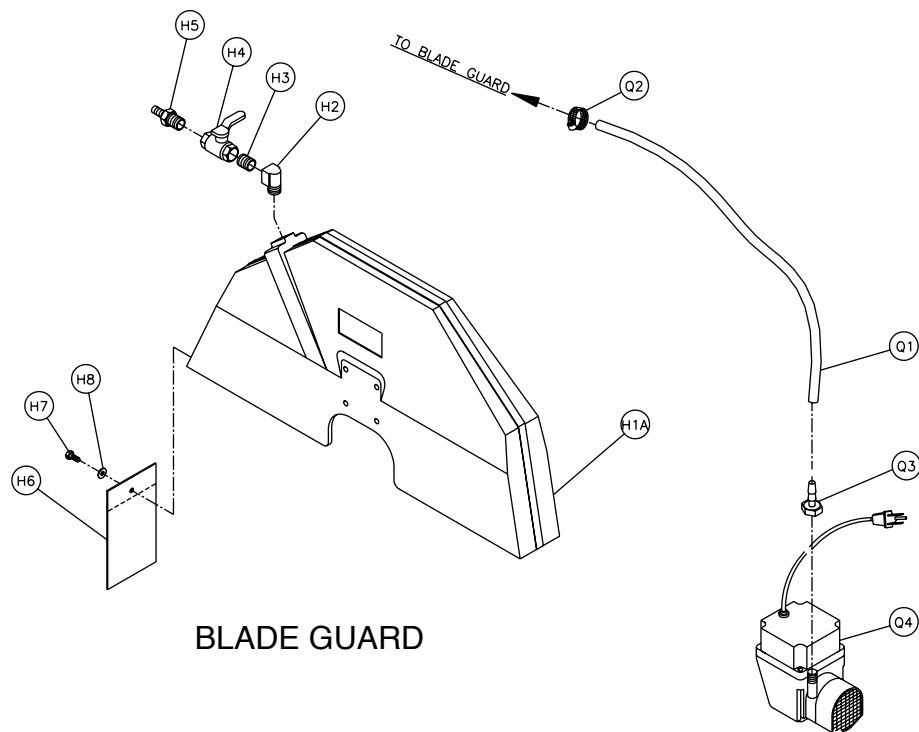
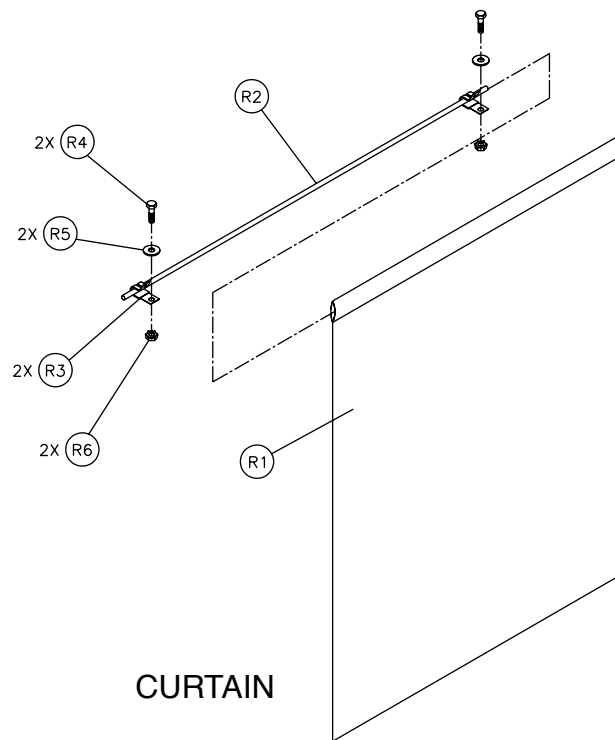


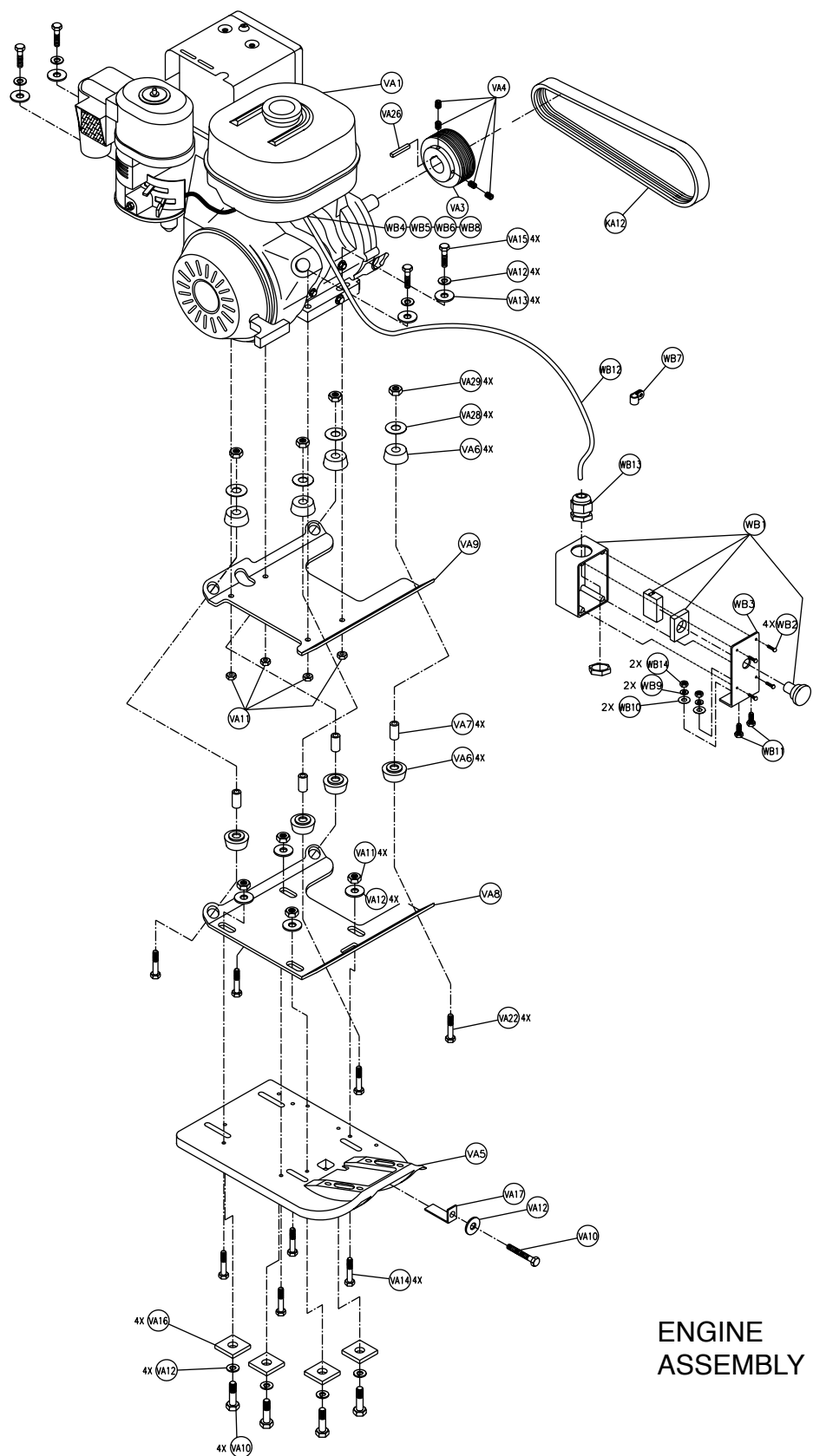


CONNECTING LINKAGE



FOOT PEDAL LINKAGE





ENGINE
ASSEMBLY

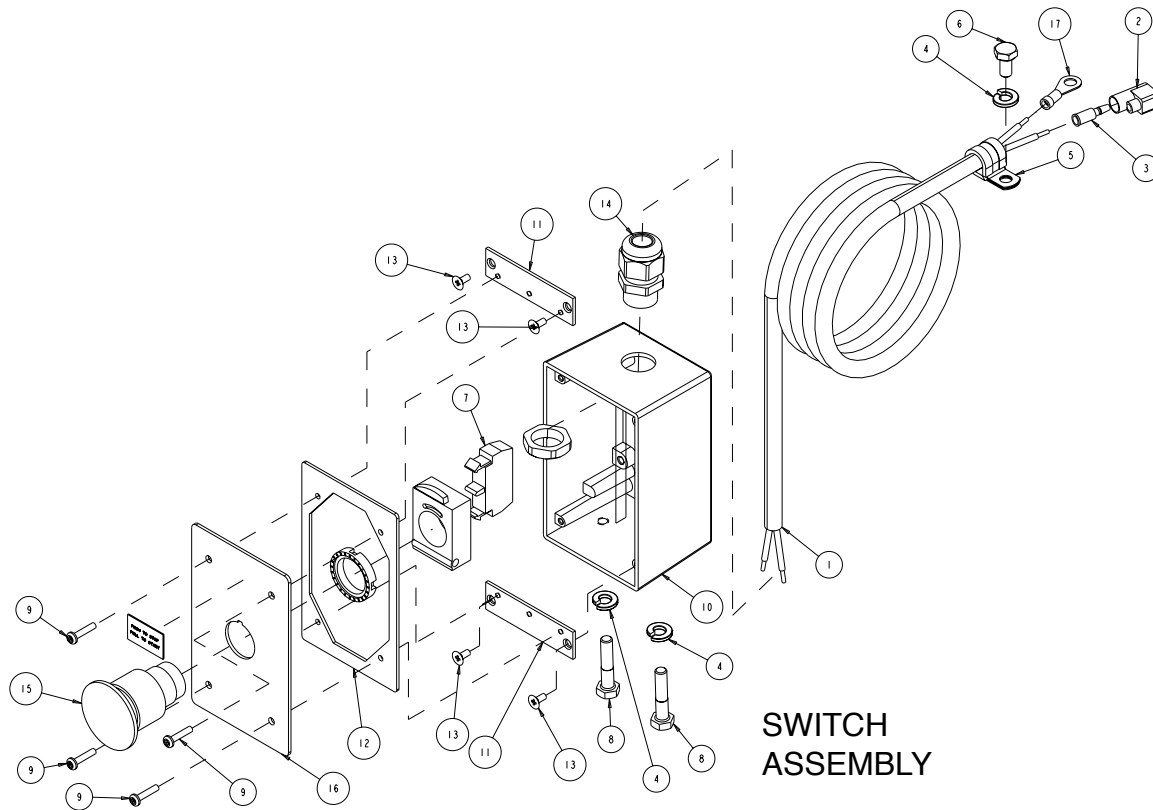
Item	Description	Qty	Part #
A	Frames	-	-
A1	Frame, MK-5000 Main	1	155541
B	Pivot Bracket	-	-
B1	Bracket, Elevation Pivot	1	156285
B2	Washer, 3/8 ID x 1-1/2 OD, Fender Washer	2	158523
B3	Screw, 1/4-20 x 1/2 Hex Head	2	152608
B4	Screw, 3/8-16 x 3/4 Hex Head	2	153527
B5	Bumper, 1/4 ID x 1-1/2 OD x 3/4	2	154496
B6	Washer, 1/4 SAE Flat	2	151915
B7	Nut, 1/4-20 Hex	2	151893
B8	Fitting, Grease (zerk)	1	153852
B9	Bushing, 1 x 1-1/4 x 2 MIS	2	154571
B10	Shaft, Pivot Arm MK-5000	1	155880
B11	Screw, 1/4-20 x 1/4 Socket Head Set, Cone point	2	153864
C	Cutting Head MK-5000	-	-
C1A	Casting, Cutting Head (comp)	1	162545
C1B	Assembly, Cutting Head, HD	1	162546
C2	Cover, 5000 Mounting Block (Comp)	2	156265
C3	Casting, 5000, Mounting Block (Comp)	2	155762
C4	Bolt, 3/8- 16 x 4-1/2 Hex Head Tap	1	153110
C5	Washer, 1-1/4 x 1-1/4 Square	1	157567
C6	Washer, 3/8 SAE Flat	2	150923
C7	Strap, Motor Adjustment	1	153611
C8	Nut, 3/8- 16 UNC	1	101188
C9	Screw, 1/2 x 1/2 Socket Head Shoulder	4	151753
C10	Washer, 1/2 SAE Flat	3	150924
C11	Joint, 1/2- 20, Female Spherical (RH)	4	154387
C12	Nut, 1/2- 20 Jam (RH)	4	154460
C13	Arm, Rear Connecting	1	158563
C14	Bearing, Ball 5/8 ID x 1-3/8 OD	2	140004
C15	Crank, Bell	1	157426
C16	Collar, Stop 5/8 ID x 1-1/8 OD x 1/2	2	140012
C17	Screw, 5/16-18 x 1/4, Socket Head Set	2	152607
C18	Screw, 5/16 x 18 x 1, Hex HD Cap	7	151743
C19	Washer, 5/16 SAE Flat	7	151754
C20	Washer, 5/16 Split Lock	7	151747
C21	Screw, 5/16-18 x 1 Flat, Socket HD Cap	1	155552
C22	Bushing, .75 x .875 x 1 Steel	3	160826
C23	Washer, Nylon .75 x 1.25 x .093	2	160827
C24	Shim, Mount Pivot Shaft Various	2	155905
C25	Shaft, Blade Guard Pivot	1	155886
C26	Link Rod, Blade Guard	1	158564
C27	Screw, 1/4- 20 x 1 Socket Head Cap	4	151049
C28	Shaft, Cutting Head Pivot	1	154828
C29	Collar, 3/4 Set	1	153814
C30	Washer, 3/8 Split Lock	1	150925
D	Depth Control	-	-
D1	Housing, Adjustment Shaft	1	152116
D2	Screw, 3/4- 6 x 10-7/8, Depth Control	1	150840

Item	Description	Qty	Part #
D3	Spacer, 3/4 ID x 1 OD x 3/4	1	156249
D4	Locknut, Feed Screw	1	158227
D5	Nut, 3/8- 16 Hex Hd.	4	101188
D6	Washer, 3/8 SAE Flat	4	150923
D7	Washer, 3/8 Split Lock	4	150925
D8	Bearing, Flange FC2-25 x 3/4 ID	1	152025
D9	Spacer , .76 ID x 1 OD x 1.187	1	156250
D10	Plate, Bearing Support	1	156278
D11	Screw, 3/8-16 X 1/2 Socket Head Set, cup point	1	153710
D12	Wheel, Depth Control (comp)	1	153646
D13	Knob, Ball, 2", 3/8-16 Insert	1	158519
D15	Screw, 1/2 x 3/4 Socket Head Shoulder	1	156177
D16	Bumper, 1-1/2 Dia. x 1/2- 13 x 3 Stud	2	158605
D17	Nut, 1/2- 13 Hex	2	151282
D18	Fitting, Grease	2	153852
DA	Depth Control Lock	1	157380
DA1	Knob, Depth Lock (comp)	1	155845
DA2	Washer, Thrust 1"OD X 3/8" ID	1	155238
DA3	Lock, 5000GH Depth Control Wheel	1	157336
DA4	Bolt, Hex Head Tap, 3/8-16 x 3	1	155830
DA5	Nut, Hex, 3/8-16	1	101188
E	Foot pedal Linkage	-	-
E1	Foot pedal and Bar, 5000 Block Saw	1	160139
E2	Screw, 1/2 x 1/2 Socket Head Shoulder	4	151753
E3	Washer, 3/8 SAE Flat	6	150923
E4	Nut, 3/8-16 Center Lock	4	153522
E5	Spring, Foot pedal	2	152115
E6	Washer, 1/2 SAE Flat	2	150924
E7	Screw, 1/2-13 x 5-1/2 Hex Head Cap	1	158526
E8	Linkage, Pedal Horizontal	2	152112
E9	Screw, 3/8- 16 x 1 Hex Head Cap	2	152507
E10	Pedal, Shaft Tie	1	156259
E11	Linkage, Pedal Diagonal	2	152113
E12	Nut, 1/2- 13 Center Lock	1	156238
E13	Linkage, Pedal Vertical	2	152114
E14	Screw, 1/2 x 3/4 Socket Head Shoulder	4	156177
E15	Hook Bolt, Weldment, 5000 Block Saw	1	160141
F	Connecting Linkage	-	-
F1	Link, Front Connecting	2	156253
F2	Link, Rear Connecting	1	156252
F3	Joint, 1/2- 20 Female Spherical (RH)	4	154387
F4	Bolt, 1/2 x 1/2 Socket Head Shoulder	4	151753
F5	Screw, Adjustment	4	154433
F6	Nut, 1/2- 20 Jam	4	154460
F7	Bolt 5/16- 18 x 1 Hex HD	4	151743
F8	Washer, 5 /16 SAE Flat	4	151754
F9	Washer, 5/16 Split Lock	4	151747
F10	Nut, 5/16- 18, Hex HD	4	101196
F11	Nut, 1/2- 20 Jam (LH)	4	154461

Item	Description	Qty	Part #
G1	Blade Shaft MK-5000	-	161308
GA1	Assembly, Blade Shaft Add Structure	1	160645
H	Blade Guard MK-5000	-	-
H1A	Casting, Blade Guard, MK-5000 (comp) 20"	11	159674
H1B	Casting, Blade Guard, MK-5000 (comp) 24"		159324
H2	Elbow, 3/8 NPT 90 Brass Street	1	152074
H3	Nipple, 3/8 NPT x Close Brass	1	152073
H4	Valve, 3/8 Ball	1	152075
H5	Fitting, 3/8 MNPT x 3/8 BARB Brass	1	152076
H6	Guard, Splash	1	160310
H7	Screw, 1/4-20 x 5/8 Hex HD	1	150404
H8	Washer, 1/4 SAE Flat	1	151915
KA	Belt Guards, Gas	-	-
KA1	Casting, Belt Guard, Motor, Outer (comp)	1	156149
KA2	Casting, Belt Guard, Motor, Inner (comp)	1	156148
KA3	Casting, Belt Guard, Arbor, Outer (comp)	1	160888
KA4	Casting, Belt Guard, Arbor, Inner (comp)	1	160890
KA5	Screw, Hex Head 3/8-16 x 1-1/4	3	150774
KA6	Washer, Lock, Split 3/8	3	150925
KA7	Washer, Flat, SAE 3/8	3	150923
KA8	Screw, Hex Head 5/16-18 x 2-1/2	4	101675
KA9	Washer, Lock, Split 5/16	4	151747
KA10	Washer, Flat, SAE 5/16	4	151754
KA11	Screw, Hex Head 5/16 x 1-1/4	2	153950
KA12	Belt, Micro-V 16J270	1	160366
KA13	Belt, Micro-V 16J430	1	160367
N1	Assembly, 5000 Table	1	152124
NA1	Table Deluxe	1	165991
P	Handles	-	-
P1A	Handle, Cutting Head 20"	11	155851
P1B	Handle, Cutting Head 24"		155613
P2	Handgrip, 7/8"	1	139949
P3	Screw, 3/8- 16 x 1 Flat Socket HD Cap	2	154019
QA	Water Pump, Mechanical	-	-
QA1	Assembly, Pump, Water, 5000 Gas	1	152355
QA2	Screw, Hex Head Cap 3/8-16X1	2	152507
QA3	Washer, Flat SAE 3/8	2	150923
QA4	Washer, Lock, Split 3/8	2	150925
QA5	Clamp, Spring	1	152453
QA6	Clamp, Cushion Loop, 3/8	1	152592
QA7	Screw, Phil, Self Tap 10-24 x 5/8	4	153681
QA8	Nut, 10-24	4	151749
QA9	Washer, Flat, #10 SAE	4	154369
QA10	Washer, Lock, Split #10 Plated	4	153684

Item	Description	Qty	Part #
R	Curtain	-	-
R1	Curtain, Splash, MK-5000	1	160764
R2	Rod, Splash Curtain	1	160711
R3	Clamp, Cushion Loop	2	152592
R4	Screw, 1/4- 20 x 3/4 Hex HD	2	152370
R5	Washer, 1/4 Flat SAE	2	151915
R6	Nut, Hex, Kep 1/4- 20	2	153941
S	Accessory Pack	-	-
S1	Carton, Accessory Pack MK-5000	1	152432
S2	Insert, Accessory Pack MK-5000	1	152433
S3	Plug, Rubber Drain	1	153439
S4	Wrench, Masonry Saw	1	134056
S5	MK-5000G Owners Manual	1	160958
S6	Blade, MK-799DE	1	158237
T	Carton	-	-
T1	Carton, 5000	1	152994
T2	Pallet, 5000	1	152072
VA	Engines	-	-
VA1A VA1B	Engine, 9Hp, Gasoline, Honda, Cyclone Engine, 13Hp, Gasoline, Honda, Cyclone	11	155396 155365
VA2	Deflector	1	155375
VA3	Pulley, 16J18X1.0 Bore	1	160365
VA4	Screw, 5/16- 18 x 3/16 Socket HD Set	12	151167
VA5	Casting, Engine Mounting (comp)	1	156140
VA6	Shock Mount, Rubber (MMC#64865K85)	8	156105
VA7	Shock Mount, Stand Off (5/8 X 3/8 TBG x 1.4)	4	156560
VA8	Mount, Engine, Lower Plate	1	158738
VA9	Mount, Engine, Upper Plate	1	158737
VA10	Screw, Hex Head 3/8-16x 1-3/4	4	150920
VA11	Nut, Hex 3/8-16	8	101188
VA12	Washer, Lock, Split 3/8	12	150925
VA13	Washer, Flat Cut 3/8	13	150923
VA14	Screw, Hex Head 3/8-16 x 1-1/4	4	150774
VA15	Screw, Hex Head Cap 3/8-16 x 2	5	153485
VA16	Washer, Square 1-1/4 x 1-1/4	4	157567
VA17	Belt Tensioner	1	160432
VA19	Pulley, 16J28X.75 Bore	1	160362
VA20	Pulley, 16J20X.75 Bore	1	160364
VA26	Key, 1/4 x 1/4 x 1-3/4 Square	1	150796
VA27	Key, 3/16 X 3/16 X 1-3/4	2	157561
VA28	Washer, Fender 5/16 ID x 1-1/2 OD	4	101527
VA29	Nut, Hex 5/16-18	4	101196
VA30	Label, Danger, California, 1.5 X 3.0	1	155581
VA31	Label, Caution, Hot Surface, 1.5 X 3.0	1	155578
VA32	Label, Danger, Lethal Exhaust, 1.5 X 3.0	1	155582
VA33	Label, Warning, Refueling, 1.5 X 3.0	1	155580
VA34	Label, Caution, Safety	1	155576
VA35	Tag, Serial Number	1	157500

Item	Description	Qty	Part #
	Switch, Emergency Stop, Gasoline	-	162537
1	Cord, Elec. So 16/2	1	152442
2	Connector, Bullet receptacle	1	152425
3	Terminal, Disconnect, Male 5000	1	152426
4	Washer, Lock, Split 1/4	3	152591
5	Clamp, Cushion Loop 3/8"	1	152592
6	Screw, Hex Head 1/4-20 x 1/2	1	152608
7	Contact Block, Normally Open	1	156202
8	Screw, Hex Head 1/4-20 x 1-1/4	2	157145
9	Screw, Pan HD Phil 6-32 x 5/8	4	157393
10	Box, 30A switch (Comp)	4	157393
11	Plate, Mounting, switch	2	159489
12	Gasket, Cover, 30 Amp Switch	2	159489
13	Gasket, Cover, 30 Amp Switch	1	159491
14	Connector, Cord, Liquid Tight	1	159493
15	Assy, Switch Button, Gas	1	162080
16	Cover, Switch, Stop, Gas	1	162080
17	Terminal, 14-16 Ga x 1/4 Ring	1	162538



Item	Description	Qty	Part #
	Table Assembly	-	152124
1	Nut, Hex 7/16 - 14	1	150922
2	Screw, thumb 5/16 - 18 x 1 - 1/2	1	151155
3	Nut, Square 5/16 - 18	1	151156
4	Washer, 1/4 Sae Flat	16	151915
5	Rule, Front Stop	1	152126
6	Bolt, Carr. 7/16 - 14 x 1 - 1/4	2	152425
7	Washer, Lock, Split 7/16	2	152424
8	Casing, 5000, Table - Comp	1	152455
9	Wheel, Roller MK-5000, MK1080	4	152493
10	Stud, Roller Wheel	4	152494
11	Nut, Hex W/Wshr, 1/4 - 20	16	153941
12	Nut, Hex, TW, 5/16 - 18	4	153942
13	Wood Strip, Table Insert	1	157748
14	Screw, #8 x 1 - 1/2 Flat HD Phil	2	158157
15	Mat, MK-5000 Table-Lg	1	160165
16	Mat, MK-5000 Table - SM	1	160166
17	Casing, Squaring Arm-Comp	1	231276

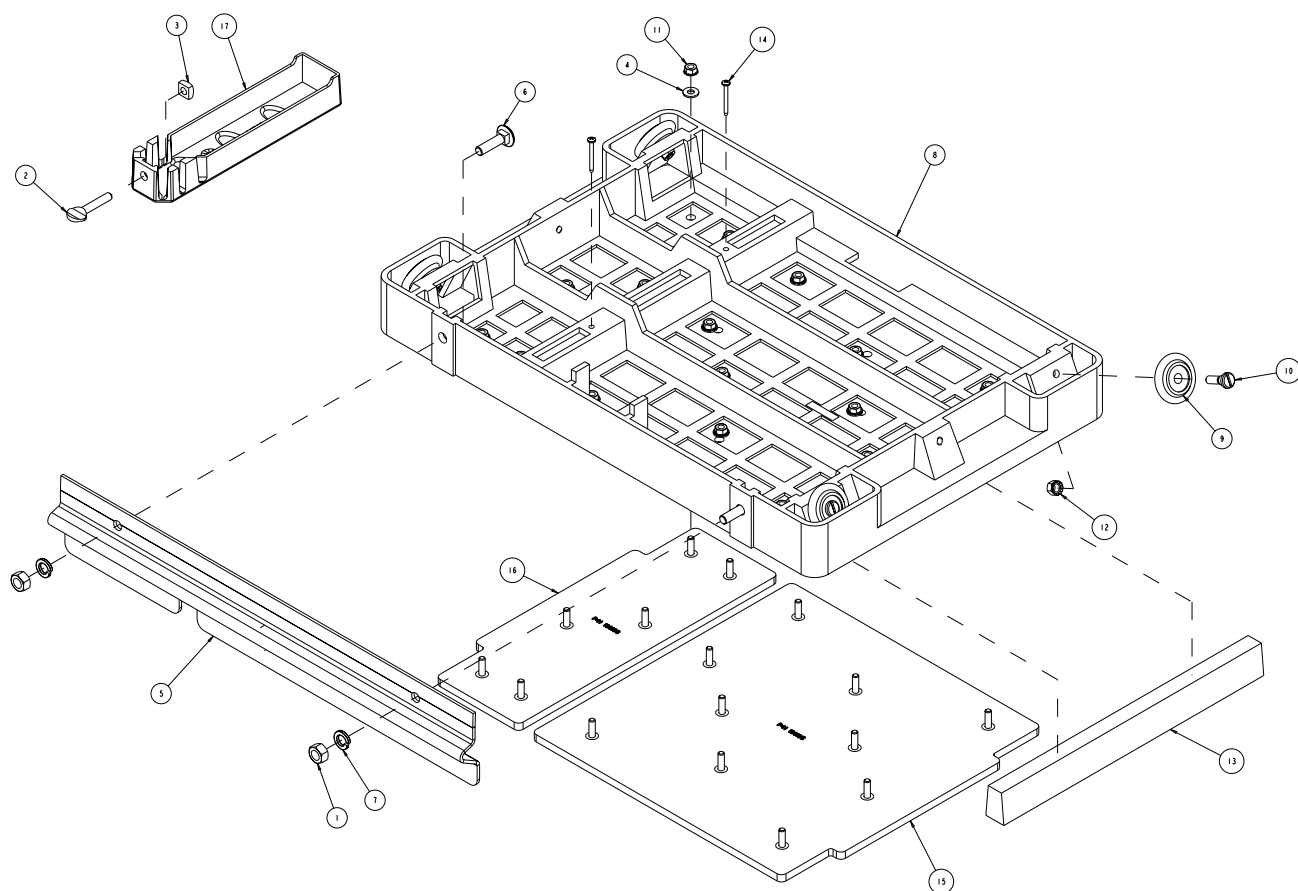
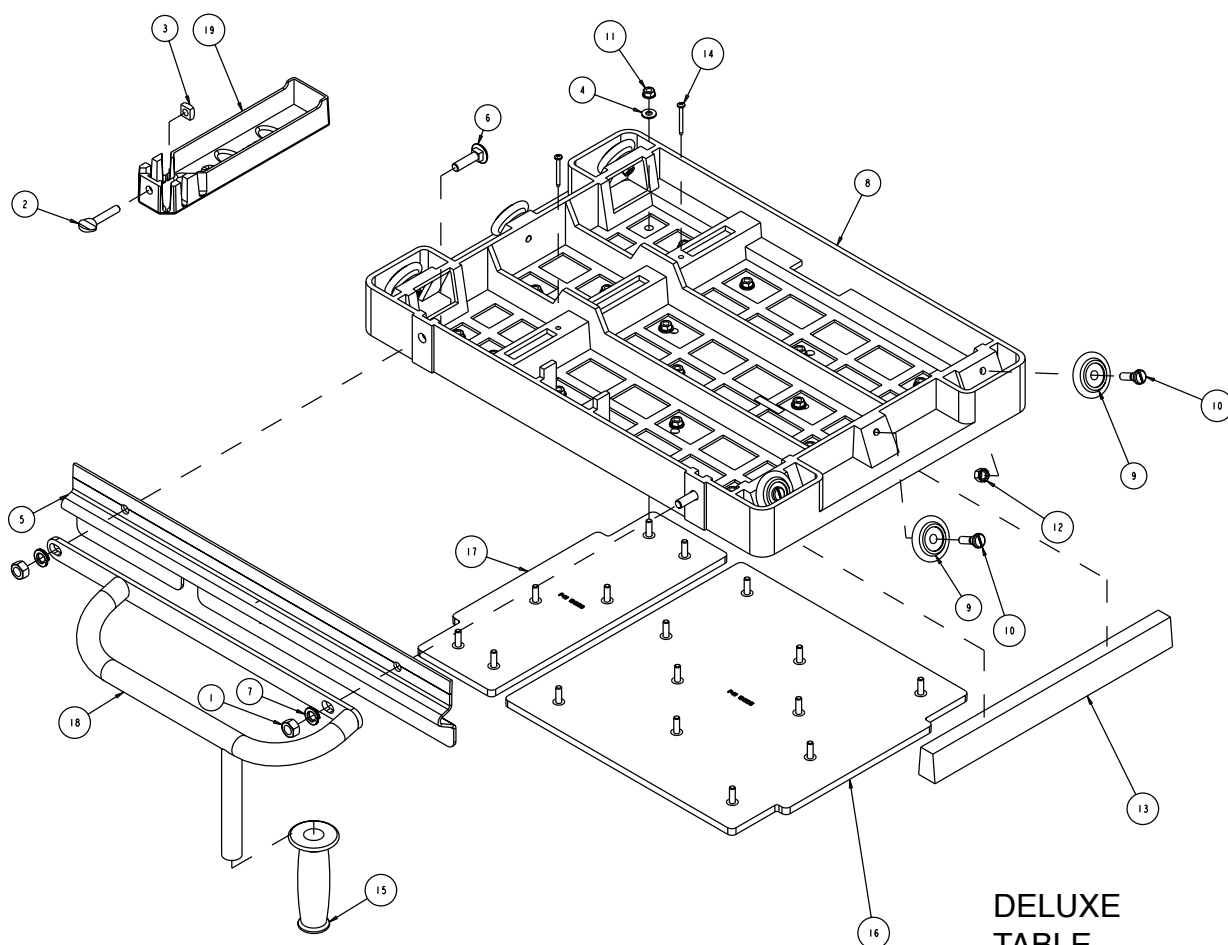


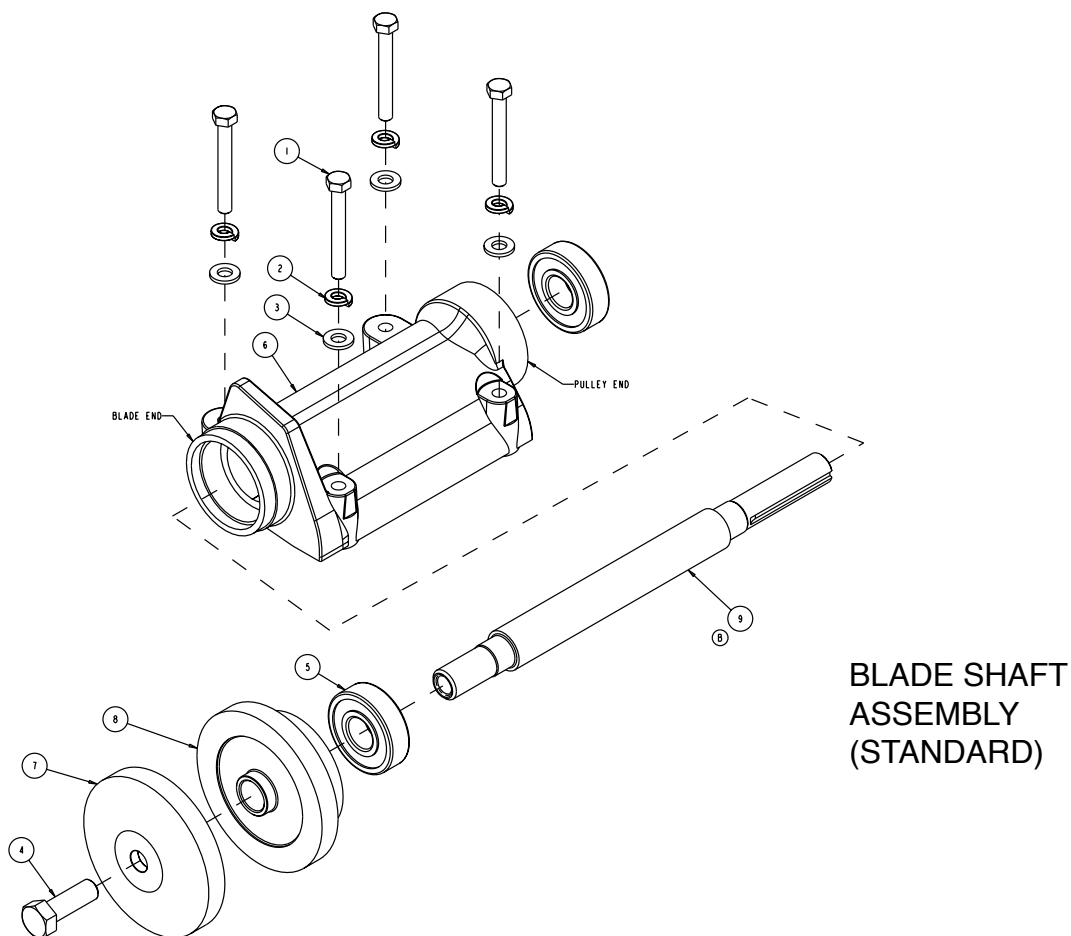
TABLE
ASSEMBLY

Item	Description	Qty	Part #
	Table Assembly Deluxe	-	165991
1	Nut, Hex 7/16 - 14	1	150922
2	Screw, thumb 5/16 - 18 x 1 - 1/2	1	151155
3	Nut, Square 5/16 - 18	1	151156
4	Washer, 1/4 Sae Flat	16	151915
5	Rule, Front Stop	1	152126
6	Bolt, Carr. 7/16 - 14 x 1 - 1/4	2	152425
7	Washer, Lock, Split 7/16	2	152424
8	Casing, 5000, Table - Comp	1	152455
9	Wheel, Roller MK-5000, MK1080	4	152455
10	Stud, Roller Wheel	4	152494
11	Nut, Hex W/Wshr, 1/4 - 20	16	153941
12	Nut, Hex, TW, 5/16 - 18	4	153942
13	Wood Strip, Table Insert	1	157748
14	Screw, #8 x 1 - 1/2 Flat HD Phil	2	158157
15	Grip, Handle 7/8 ID	1	158608
16	Mat, MK-5000 Table-LG	1	160165
17	Mat, MK-5000 Table - SM	1	160166
18	Handle, Table	1	165990-L
19	Casing, Squaring Arm-Comp	1	231276

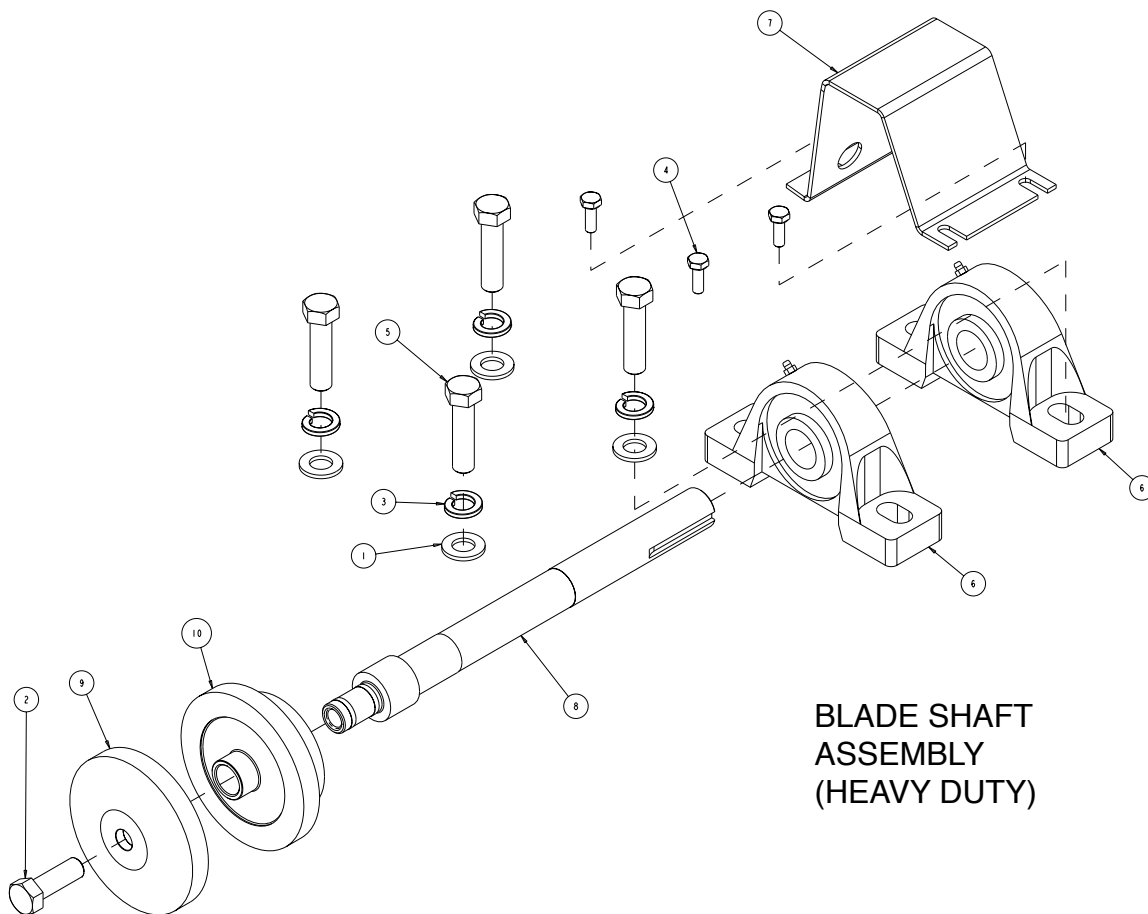


DELUXE
TABLE
ASSEMBLY

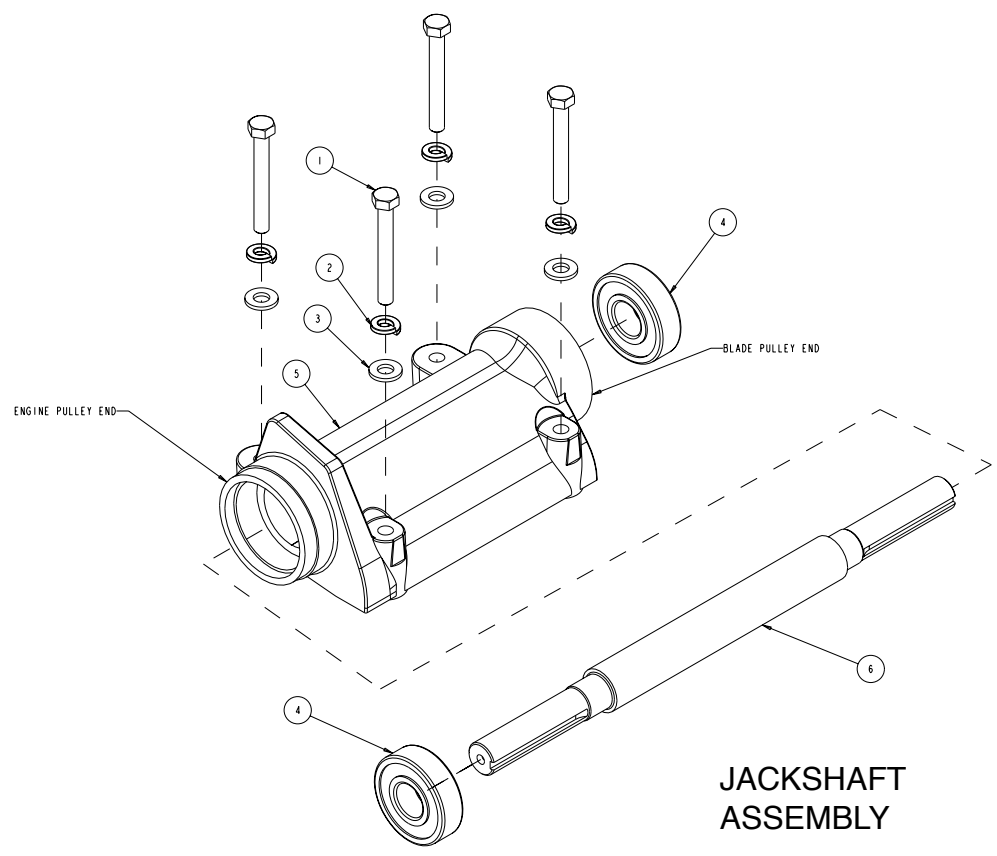
Item	Description	Qty	Part #
	Arbor Assembly Standard	-	161308
1	Screw, Hex HD 5/16 - 18 x 2 - 1/2	4	101675
2	Washer, 5/16 Split Lock	4	151747
3	Washer, 5/16 Sae Flat	4	151754
4	Screw, Hex HD 1/2 - 20 x 1-1/4	1	152122
5	Bearing, Arbor Housing	2	154594
6	Casting, 2000/5000 Arbor - Comp	1	154637
7	Flange, Outer, Masonry, 4"	1	161304
8	Flange, Outer, Masonry, 4"	1	161305
9	Shaft, Blade, 20mm	1	165861








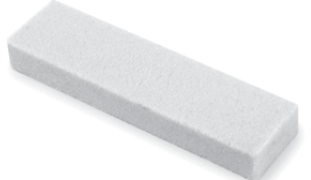

Item	Description	Qty	Part #
	Blade Shaft Assembly Heavy Duty	-	160645
1	Washer, 1/2 Saw Flat	4	150924
2	Screw, Hex HD 1/2 - 20 x 1 - 1.4	1	152122
3	Washer, 1/2 Split Lock	4	153524
4	Screw, Hex HD 1/4 - 20 x 3/8	3	153526
5	Screw, Hex HD 1/2 - 13 x 2	4	153533
6	Bearing, 1.0 ID Pillow Block	2	157924
7	Guard, Shaft 5000D	1	160398
8	Shaft, Blade, Heavy Duty	1	161137
9	Flange, Outer, Masonry, 4"	1	161304
10	Flange, Inner Masonry, 4"	1	161305



Item	Description	Qty	Part #
	Jackshaft Assembly	-	166045
1	Screw, Hex HD 5/16 - 18 x 2 - 1/2	4	101675
2	Washer, 5/16 Split Lock	4	151747
3	Washer, 5/16 Sae Flat	4	151754
4	Bearing, Arbor Housing	2	154594
5	Casting, 2000/5000 Arbor - Comp	1	154637
6	Shaft, Jack	1	156117



ACCESSORIES

Item	Number	Description	
1.	157957	BX-10 14" Premium Grade Diamond Blades for Dry Cutting of Hard Brick	
2.	157944	BX-30 14" Premium Grade Diamond Blades for Dry Cutting of Hard Brick	
3.	128678	MK-30 20" Supreme Grade Blades for Brick & Block	
4.	132332	Adjustable Cutting Guide	
5.	156427	Protective Wooden Strip	
6.	152792	Dressing Stick	
7.	153439	Rubber Drain Plug	

ORDERING INFORMATION

You may order MK Diamond products through your local MK Diamond distributor or, you may order direct from MK Diamond.

When ordering direct from MK Diamond, please have the following information ready before calling:

- The Model Number of the saw
- The Serial Number of the saw
- Where the saw was purchased and when
- The Part Number for the part(s) being ordered
- The Part Description for the part(s) being ordered

NOTE: There is a \$25.00 minimum order when ordering direct from MK Diamond. A \$6.00 charge will be added to orders having a net billing value under \$50.00. All purchases must be made using VISA, MasterCard or American Express.

All parts may be ordered by calling toll free to – 800 421-5830 or 310 539-5221 and asking for Customer Service. For technical questions, call – 800 474-5594.

RETURN MATERIALS POLICY

To expedite the service relative to the return of a product purchased through MK Diamond, please observe the following:

NOTE: When returning all items, they must have been purchased within the previous twelve (12) months.

- Have the Model Number of the saw
- Have the Serial Number of the saw
- Have the location of where the saw was purchased
- Have the date when the saw was purchased
- Contact Customer Service for approval to return the item(s)
- Obtain a Returned Goods Number (RGA) authorizing the return
- Follow the packaging instructions in the following section
- Ensure your item(s) are prepaid to the destination

For returned items, call toll free to – 800 421-5830 or 310 539-5221 and ask for Customer Service. For technical questions, call – 800 474-5594 or 310 257-2845.

PACKAGING INSTRUCTIONS

- Remove the Cutting Head and Support Angle Assembly
- Dry the saw before shipping
- When packing, include the following: Saw, Diamond Blade, Blade Guard and Support Angle Assembly and Adjustable Cutting Guide (Other Accessories are not required)
- Package the unit in its original container or one of comparable size (do not ship the unit partially exposed)
- Ensure all parts are secured in the packaging to prevent moving

AUTHORIZED SERVICE CENTERS

For quicker repair time, you may contact MK Diamond Customer Service, toll free, at 800 421-5830 or 310 539-5221 for the Authorized Service Center closest to you or visit our web site at www.mkdiamond.com. For technical questions, call – 800 474-5594.

CONTACT:

Please contact MK Diamond Products, Inc. Customer Service Department with any questions you might have regarding distributors, parts or service.

Telephone: **(800) 421-5830**

Fax: **(310) 539-5158**

E-mail: **Customer_Service@MKDiamond.com**

Customer Service Hours: **Monday through Friday, 6AM-4PM PST**

MK Diamond Products, Inc.

1315 Storm Parkway

Torrance, CA 90501

MK DIAMOND PRODUCTS, INC. LIMITED WARRANTY

MK DIAMOND PRODUCTS, INC. will guarantee every machine they build, to be free from defects in material and workmanship for (1) one year from date of purchase. The obligation of MK DIAMOND PRODUCTS, INC. under this warranty is limited to the repair or replacement of any parts which, under normal use, prove to be defective in material or workmanship. The parts involved or the unit in question should be returned to MK DIAMOND PRODUCTS, INC. or to a point designated by us, transportation prepaid.

This warranty does not obligate us to bear the cost of labor or transportation charges in connection with replacement or repair of defective parts. Likewise, it shall NOT apply to any unit which has been subjected to misuse, neglect or accident. This warranty does NOT apply to any machine which has been repaired or altered outside our factory.

This warranty does NOT obligate MK DIAMOND PRODUCTS, INC., with respect to items not of our manufacture, such as engines, motors, hydraulics, etc., which are subject to their own guarantees and warranties.

We shall in no event be liable for consequential damages or contingent liabilities arising out of failure of any equipment or parts to operate properly.

© COPYRIGHT 2015, MK DIAMOND PRODUCTS, INC. ALL RIGHTS RESERVED.

The MK Diamond logo is a registered trademark of MK Diamond Products, Inc. and may not be used, reproduced, or altered without written permission. All other trademarks are the property of their respective owners and used with permission.

MK Diamond may have patents, patent applications, trade marks, copyrights of other intellectual property right covering this product in this document.

This manual **MUST** accompany the equipment at all times. This manual is considered a permanent part of the equipment and should remain with the unit if resold.

The information and specifications included in this publication were in effect at the time of approval for printing.

MK-5000G Block Saw
OWNER'S MANUAL & OPERATING INSTRUCTIONS



MK Diamond Products, Inc.

MK Diamond Products, Inc.
1315 Storm Parkway
Torrance, CA 90501

Toll-Free: (800) 421-5830
Phone: (310) 539-5221
Fax: (310) 539-5158
www.mkdiamond.com