



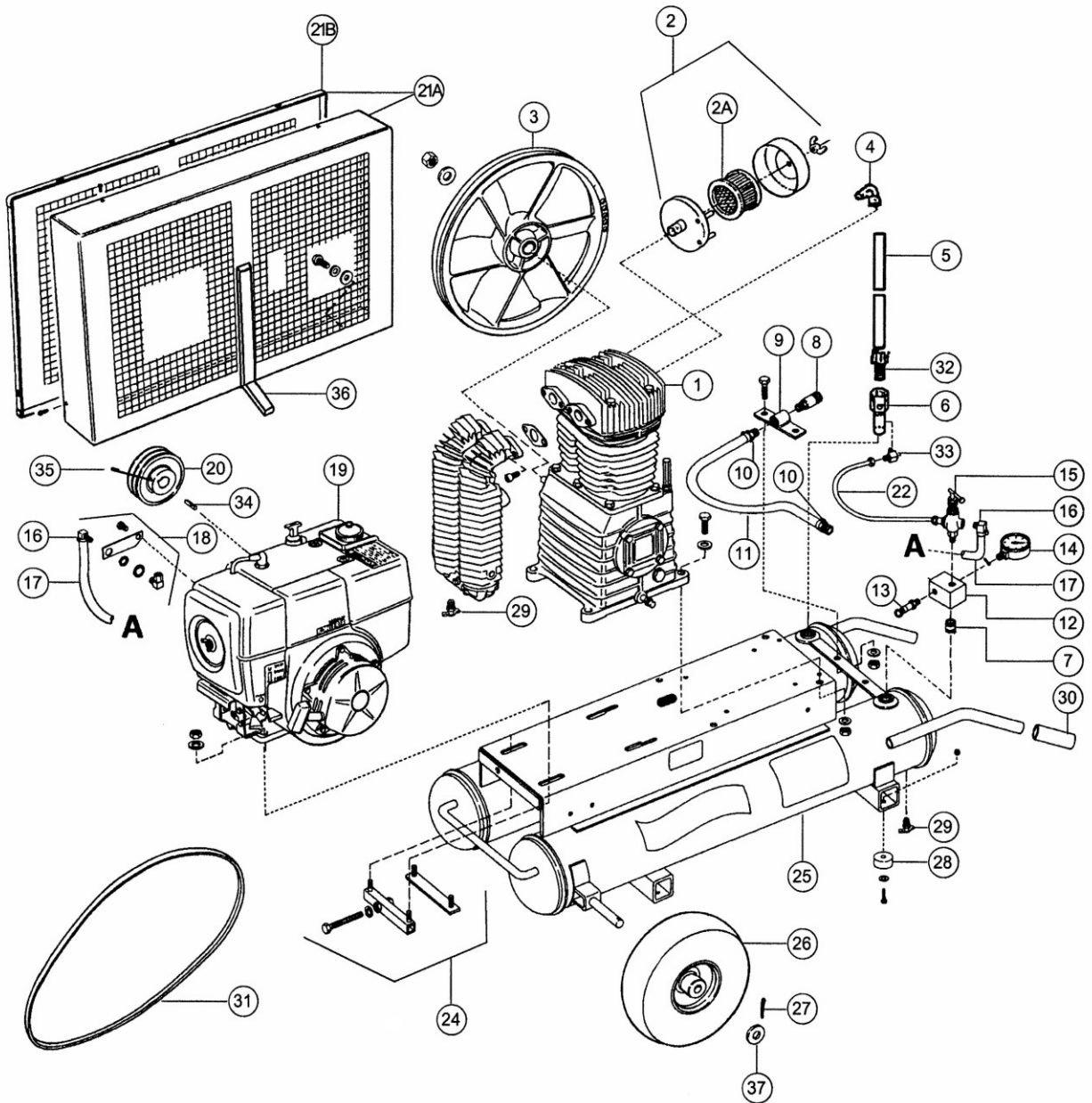
ROLAIR®


SCHEMATIC FOR MODELS

7722HK28

8422K30

8422HK30





ROLAIR®

S Y S T E M S

PARTS LIST FOR MODELS


7722HK28 8422K30 8422HK30

Schematic #	Description	Part #	Qty.
1	II Stage Pump with Flywheel - Model 7722HK28	PMP22K28CH	1
	II Stage Pump less Flywheel - Model 7722HK28	PMP22K28CHLF	1
	II Stage Pump with Flywheel - Models 8422K30 & 8422HK30	PMP22K30CH	1
	II Stage Pump less Flywheel - Models 8422K30 & 8422HK30	PMP22K30CHLF	1
2	Silencer/Filter Assembly	FS14075	1
2A	Filter Element – Replacement for Above	431	1
3	Flywheel - Models 8422HK30 & 8422K30	31003040CH	1
	Model 7722HK28	31004620CH	1
4	Brass Elbow	BREL0750X075039	1
5	Discharge Tube - Model 7722HK28	7722HK28-DISCH TB	1
	Model 8422HK30 – Honda*	8422HK30-DISCH TB	
	Model 8422K30 – Kohler*	8422K30-DISCH TB	1
6	Check Valve (Before S/N 15070001)	N.L.A.	
	(After S/N 15070001)	CV4X4TA-A200	1
7	Nipple	BLNP0500X1500	1
8	Quick Disconnect	309A	1
9	Accessory Bracket	210	1
10	Brass Coupler	BRCP0375X0375H12	2
11	3/8" Rubber Hose – 16"	178A	1.34'
	Hose Clamp	177A	2
12	Aluminum Block Manifold	154	1
13	Safety Relief Valve	SRV0250A175	1
14	Gauge	GA0250300GC	1
15	Pilot Unloader Valve	131B	1
16	Brass Elbow	BREL0250X0125H16	2
17	1/4" Rubber Hose – 36"	178	3'
	Hose Clamp	177B	2
18	Throttle Control Assembly – Kohler	191M8T	1
	Throttle Control Assembly - Honda	192EGX240QA	1
19	Kohler Engine	N.L.A.	
	Honda Engine	ENG09H01	1
	Optional Engine Drain Extension for Above	HDE8	1
20	Pulley - Model 7722HK28	PU2AK54X1000	1
	Models 8422K30 & 8422HK30	PU2AK46X1000	1
21A	Belt-Guard Assembly (Base & Cover)	BG8422K30ASSY	1
21B	Belt-Guard Cover	BG8423	1
22	1/4" Copper Tubing – 12"	CTUBE14	1'
24	Belt Tightener/Mounting Kit - Model 8422K30	SBT8HPK0-ANGLE**	1
	Models 7722HK28 & 8422HK30	SBT8HPH0&KAK30-ANGLE**	1
25	Twin Tank Assembly	Specify Pump	1
26	Foam-Filled Flat-Free Tire	WLS50	2
27	Cotter Pin	181B	2
28	Rubber Foot	219	4
29	Drain Valve	132BV	3
30	Handle Grip	328	2
31	Belt	BTA63	2
32	Brass Straight	BRST0750X050038	1
33	Brass Elbow	BREL0250X012539	1
34	Keystock	MIS10096C	1
35	Setscrew	MIS10020C	1
36	Field Kit-Belt Guard Bracket	BGB8K30	1
37	Washer	MIS10104	6

*Prior to January 1997, a discharge tube with a 90° bend was used in production. Please advise our Parts Department of the compressor's serial number when ordering this part.

**For units built prior to February 2005, order SBT8HP-SQUARE or SBT8HPH0&KA17-SQUARE respectively.

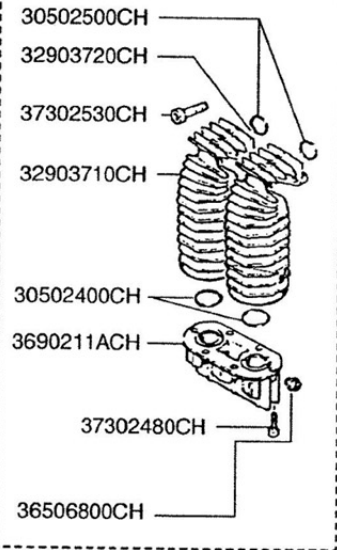
As an additional safety measure, twin-tank gas models built after July 1, 2015 include additional safety valve on check valve.



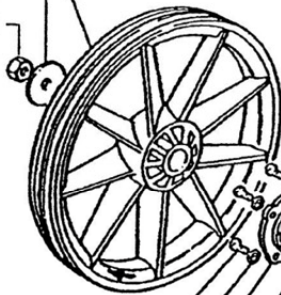
ROLAIR®

SCHMATIC FOR
PMP22K28

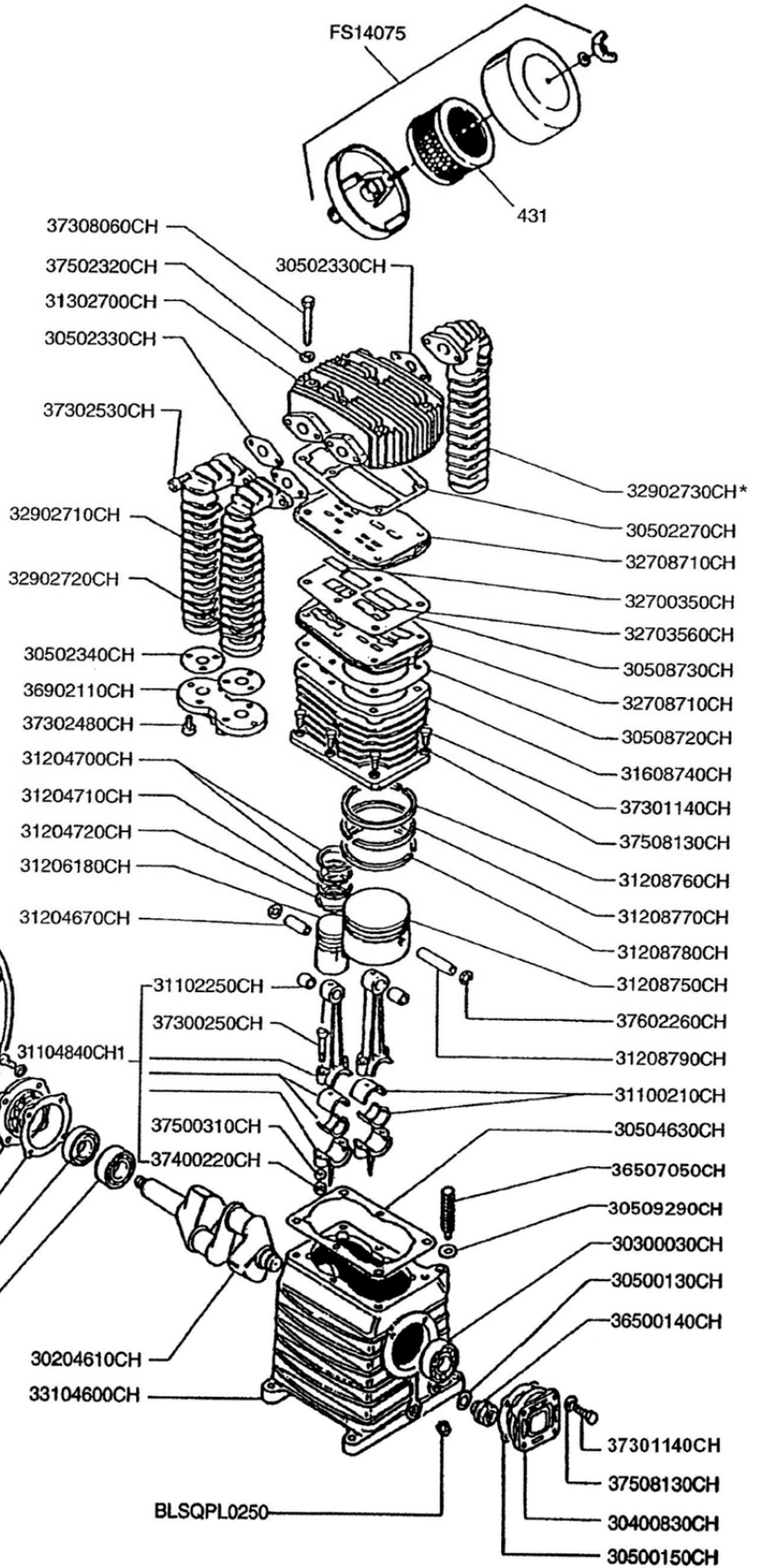
PRODUCTION STARTING 2/00



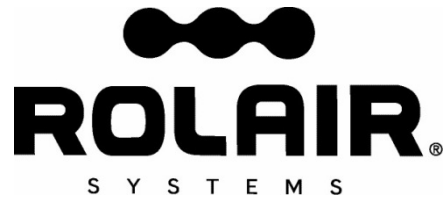
- 31004620CH
- 37500730CH
- 37400720CH



- 37301140CH
- 37508130CH
- 30400860CH
- 30500050CH
- 30300040CH
- 30300030CH



*Aftercooler Optional



PARTS LIST FOR PMP22K28

Description	Part #	Qty.	Description	Part #	Qty.
Crankshaft	30204610CH	1	Valve Plate	32708710CH	2
Bearing	30300030CH	2	Left Intercooler	32902710CH	1
Oil Seal	30300040CH	1	Right Intercooler	32902720CH	1
Bearing Carrier	30400830CH	1	Aftercooler**	32902730CH	1
Bearing Carrier	30400860CH	1	Crankcase	33104600CH	1
Gasket	30500050CH	1	Sight Gauge	36500140CH	1
Gasket	30500130CH	1	3/8" Breather/Oil Fill Plug	36507050CH	1
Gasket	30500150CH	1	Connector	3690211ACH	1
O-Ring	30509290CH	1	Bolt	37300250CH	4
Gasket	30502270CH	1	Bolt	37301140CH	14
Gasket	30502330CH	3	Bolt	37302480CH	6
Gasket	30502340CH	2	Bolt	37302530CH	6
Gasket	30504630CH	1	Bolt	37308060CH	6
Gasket	30508720CH	1	Nut	37400220CH	4
Gasket	30508730CH	1	Nut	37400720CH	1
Flywheel	31004620CH	1	Washer	37500310CH	4
Bearing Shell	31100210CH	2	Washer	37500730CH	1
Bushing*	31102250CH	2	Washer	37508130CH	14
Connecting Rod Assembly	31104840CH1	2	Snap Ring	37602260CH	4
Piston Pin - HP	31204670CH	1	Plug	BLSQPL0250	1
Ring - HP	31204700CH	2	Silencer/Filter Assembly	FS14075	1
Ring - HP	31204710CH	1	Filter Element	431	1
Ring - HP	31204720CH	1	Ring Set	K28RINGS	1
Piston - HP	31206180CH	1	Gasket Set	K28GASKETS	1
Piston - LP	31208750CH	1	Valve Plate Assembly	2800VK28	1
Ring - LP	31208760CH	1	INTERCOOLER/AFTERCOOLER PARTS STARTING		
Ring - LP	31208770CH	1	12/99		
Ring - LP	31208780CH	1	O-Ring - Connector	30502400CH	2
Piston Pin - LP	31208790CH	1	Plug	36506800CH	1
Head	31302700CH	1	Connector	3690211ACH	1
Cylinder	31608740CH	1	Bolt	37302480CH	6
Valve - HP	32700350CH	2	Bolt	37302530CH	6
Valve - LP	32703560CH	2	O-Ring - Head	30502500CH	2

*Bushing is not machined to fit piston pin if ordered separate from connecting rod.

**Optional part, not normally included with standard pump

