

NOTE: This is a generic manual. Items shown may not apply to your vacuum.
Please contact customer service with questions.

! ATTENTION!

Read all safety rules carefully before attempting to operate. Retain for future reference.

! DANGER!

Never operate this unit when flammable materials or vapors are present because electrical devices produce arcs or sparks that can cause a fire or explosion.

**NEVER OPERATE
UNATTENDED!**

! WARNING!

Do **NOT** use this vacuum cleaner to vacuum lead paint debris because this may disperse fine lead particles into the air. This vacuum cleaner is not intended for use under EPA Regulation 40 CFR Part 745 for lead paint material cleanup.

shop•vac[®]
BRAND

SHOP-VAC CORPORATION
2323 Reach Road, P.O. Box 3307
Williamsport, PA 17701-0307
(570) 326-3557
Web site: www.shopvac.com

SHOP-VAC CANADA
1770 Appleby Line
Burlington, Ontario L7L 5P8
(905) 335-9730
Web site: www.shopvac.ca

Shop Vac-México, S.A. de C.V.
Calle Niños Héros #1553
Colonia Agua Blanca
45235 - Zapopan, Jalisco
52 (33) 3188 6388

Patents Issued and Pending. Printed in U.S.A.

© 2010 Shop-Vac Corporation. All rights reserved.

IMPORTANT SAFETY INSTRUCTIONS

When using an electrical appliance, basic precautions should always be followed, including the following: **READ ALL INSTRUCTIONS BEFORE USING THIS APPLIANCE.**

WARNING – TO REDUCE THE RISK OF FIRE, ELECTRIC SHOCK OR INJURY:

1. Do not leave appliance when plugged in. Unplug from outlet when not in use and before servicing. Connect to a properly grounded outlet only. See Grounding Instructions.
2. Do not expose to rain – store indoors.
3. Do not allow to be used as a toy. Close attention is necessary when used by or near children.
4. Use only as described in this manual. Use only Manufacturer's recommended attachments.
5. Do not use with damaged cord or plug. If appliance is not working as it should, has been dropped, damaged, left outdoors or dropped into water, contact Shop-Vac Corporation for assistance.
6. Do Not: pull or carry by cord, use cord as a handle, close a door on cord or pull cord around sharp edges or corners. Do not run appliance over cord. Keep cord away from heated surfaces.
7. Do not unplug by pulling on cord. To unplug, grasp the plug; not the cord.
8. Do not handle plug or appliance with wet hands.
9. Do not put any object into openings. Do not use with any openings blocked; keep free of dust, lint, hair and anything that may reduce air flow.
10. Keep hair, loose clothing, fingers and all parts of body away from openings and moving parts.
11. Do not pick up anything that is burning or smoking, such as cigarettes, matches or hot ashes.
12. Do not use without dust bag and/or filters in place.

13. Turn off all controls before unplugging.
14. Use extra care when cleaning on stairs.
15. Do not use to pick up flammable or combustible liquids such as gasoline or use in areas where they may be present.
16. Do not use your cleaner as a sprayer of flammable liquids such as oil base paints, lacquers, household cleaners, etc.
17. Do not vacuum toxic, carcinogenic, combustible or other hazardous materials such as asbestos, arsenic, barium, beryllium, lead, pesticides or other health endangering materials. Specially designed units are available for these purposes.
18. Do not pick up soot, cement, plaster or drywall dust without cartridge filter and collection filter bag in place. These are very fine particles that may pass through the foam and affect the performance of the motor or be exhausted back into the air. Additional collection filter bags are available.
19. Do not leave the cord lying on the floor once you have finished the cleaning job. It can become a tripping hazard.
20. Use special care when emptying heavily loaded tanks.
21. To avoid spontaneous combustion, empty tank after each use.
22. The operation of a utility vac can result in foreign objects being blown into eyes, which can result in eye damage. Always wear safety goggles when operating vacuum.
23. **STAY ALERT.** Watch what you are doing and use common sense. Do not use vacuum cleaner when you are tired, distracted or under the influence of drugs, alcohol or medication causing diminished control.
24. **WARNING!** Do **NOT** use this vacuum cleaner to vacuum lead paint debris because this may disperse fine lead particles into the air. This vacuum cleaner is not intended for use under EPA Regulation 40 CFR Part 745 for lead paint material cleanup.

SAVE THESE INSTRUCTIONS

WARNING – DO NOT LEAVE VACUUM UNATTENDED WHEN IT IS PLUGGED IN AND/OR OPERATING. UNPLUG UNIT WHEN NOT IN USE.

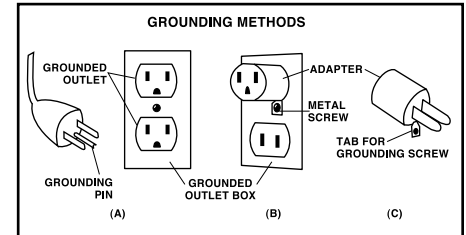
GROUNDING INSTRUCTIONS

This appliance must be grounded. If it should malfunction or breakdown, grounding provides a path of least resistance for electric current to reduce the risk of electric shock. This appliance is equipped with a cord having an equipment-grounding conductor and grounding plug. The plug must be inserted into an appropriate outlet that is properly installed and grounded in accordance with all local codes and ordinances.

WARNING – IMPROPER CONNECTION OF THE EQUIPMENT-GROUNDING CONDUCTOR CAN RESULT IN A RISK OF ELECTRIC SHOCK. CHECK WITH A QUALIFIED ELECTRICIAN OR SERVICE PERSON IF YOU ARE IN DOUBT AS TO WHETHER THE OUTLET IS PROPERLY GROUNDED. DO NOT MODIFY THE PLUG PROVIDED WITH THE APPLIANCE – IF IT WILL NOT FIT THE OUTLET, HAVE A PROPER OUTLET INSTALLED BY A QUALIFIED ELECTRICIAN.

This appliance is for use on a nominal 120-volt circuit, and has a grounded plug that looks like

the plug illustrated in sketch A. A temporary adapter that looks like the adapter illustrated in sketches B and C may be used to connect this plug to a 2-pole receptacle as shown in sketch B if a properly grounded outlet is not available. The temporary adapter should be used only until a properly grounded outlet (sketch A) can be installed by a qualified electrician. The green colored rigid ear, lug or the like extending from the adapter must be connected to a permanent ground such as a properly grounded outlet box cover. Whenever the adapter is used, it must be held in place by a metal screw.



IN CANADA, THE USE OF A TEMPORARY ADAPTER IS NOT PERMITTED BY THE CANADIAN ELECTRICAL CODE. Make sure that the appliance is connected to an outlet having the same configuration as the plug. No adapter should be used with this appliance.

EXTENSION CORDS

When using the appliance at a distance where an extension cord becomes necessary, a 3-conductor grounding cord of adequate size must be used for safety, and to prevent loss of power and overheating. Use the table below to determine A.W.G. wire size required. To determine ampere rating of your vacuum, refer to nameplate located on rear of motor cover.

Volts		Total length of cord in feet			
120V		25	50	100	150
Ampere Rating More Than	Not More Than	AWG			
0	- 6	18	16	16	14
6	- 10	18	16	14	12
10	- 12	16	16	14	12
12	- 16	14	12	Not recommended	

Before using appliance, inspect power cord for loose or exposed wires and damaged insulation. Make any needed repairs or replacements before using your appliance. Use only three-wire outdoor extension cords which have three-prong grounding-type plugs and three-pole receptacles which accept the extension cord's plug. When vacuuming liquids, be sure the extension cord connection does not come in contact with the liquid.

NOTE: STATIC SHOCKS ARE COMMON IN DRY AREAS OR WHEN THE RELATIVE HUMIDITY OF THE AIR IS LOW. THIS IS ONLY TEMPORARY AND DOES NOT AFFECT THE USE OF THE APPLIANCE. TO REDUCE THE FREQUENCY OF STATIC SHOCKS IN YOUR HOME, THE BEST REMEDY IS TO ADD MOISTURE TO THE AIR WITH A CONSOLE OR INSTALLED HUMIDIFIER.

UNPACKING

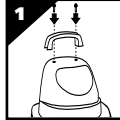
1. Remove vacuum cleaner and all accessories from the carton.
2. Important: Open tank cover by pushing latches or clamps outward with thumbs and remove any accessories that may have been shipped in the tank.
3. Assemble dolly or caster system following instructions.
4. Before replacing cover, please refer to Dry Pick up or Wet Pick up operation to ensure proper filter installation.
5. Replace cover and make sure latches or clamps are secured over raised area of tank cover.
I=ON, O=OFF

ASSEMBLY

TOP HANDLE ASSEMBLY

(Not standard with all models)

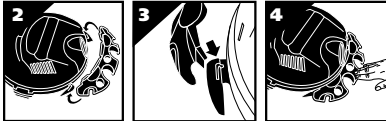
To attach top handle, align holes in handle and holes in tank cover and secure with screws provided (Figure 1).



TOOL HOLDER ASSEMBLY

(Not standard with all models)

1. With rear of unit facing you, take tool holder and position it with tabs facing rear of unit (Figure 2).
2. Place "J" shaped tabs into the slots on cord wraps (Figure 3).
3. Press down until tabs snap into place.
4. Press down on center of tool holder until tab latches on bottom of lid (Figure 4).



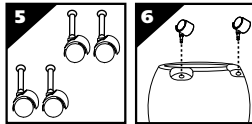
CASTER SYSTEM ASSEMBLY

Not all units are equipped with the same caster system. Follow the instructions, which apply to your specific unit.

Without Caster Feet

You will find four casters (Figure 5) with your wet/dry vacuum. Assemble as follows:

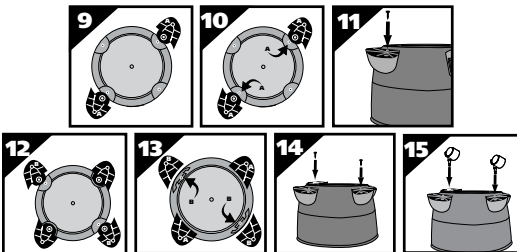
1. With cord disconnected from receptacle and tank cover removed, turn tank upside down so that bottom is facing up.
2. Insert casters into bottom of tank by placing stem of caster into holes provided. Apply pressure and twisting motion until casters snap into place (Figure 6).
3. Return tank to upright position.



5-8 U.S. Gallons (18.9 - 30.2L) With Caster Feet

You will find four caster feet (Figure 7), four casters (Figure 8), and four screws with your wet/dry vacuum. Assemble as follows:

1. With cord disconnected from receptacle and tank cover removed, turn tank upside down so that bottom is facing up.
2. Remove any webbing that attaches the caster feet to each other.
3. With front of tank inlet facing you, take caster feet marked with the letter A (Figure 9) and insert stem of caster foot into holes on left front and right rear of tank also marked with letter A (Figure 10). Make sure caster feet are fully inserted into tank bottom and secure with screws provided (Figure 11).
4. Take caster feet marked with the letter B (Figure 12) and insert stem of caster foot into holes on right front and left rear of tank also marked with the letter B (Figure 13). Make sure caster feet are fully inserted into tank bottom and secure with screws provided (Figure 14).
5. Insert casters into feet by placing stem of caster into holes provided. Apply pressure and twisting motion until casters snap into place (Figure 15).
6. Return tank to upright position.

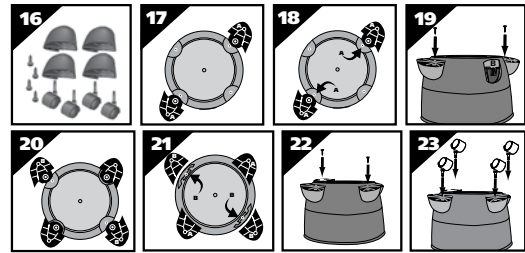


10 U.S. Gallons (37.8L) and Up With Caster Feet

You will find four caster feet, four casters and four screws (Figure 16) with your wet/dry vacuum. Assemble as follows:

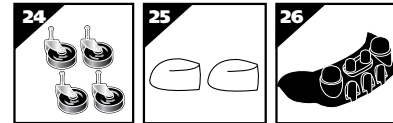
1. With cord disconnected from receptacle and tank cover removed, turn tank upside down so that bottom is facing up.
2. With front of tank facing you, take caster feet marked with the letter A (Figure 17) and place in slots on left front and right rear of tank also marked with the letter A (Figure 18). Secure with screws provided (Figure 19).
3. Take caster feet marked with the letter B (Figure 20) and place in slots on right front and left rear of tank also marked with the letter B (Figure 21). Secure with screws provided (Figure 22).
4. If flat washers are included in hardware package place flat washer over stem of caster before installing casters into feet. NOTE: Flat washers are not required with all units.

5. Insert casters into feet by placing stem of caster into holes provided. Apply pressure and twisting motion until casters snap into place (Figure 23). Return tank to upright position.

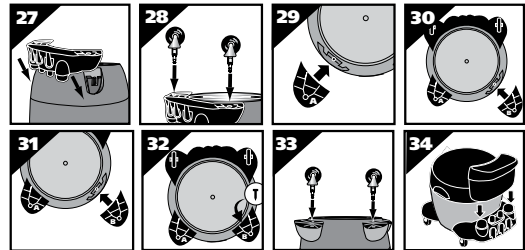


With Rear Caster Dolly/Tool Holder

You will find four casters (Figure 24), two caster feet (Figure 25), rear caster dolly/tool holder (Figure 26), and four screws with your wet/dry vacuum. Assemble as follows:



1. With cord disconnected from receptacle and tank cover removed, turn tank upside down so that the bottom is facing up.
2. Take rear caster dolly and place into slots (on rear of tank, opposite of drain) and secure with screws provided (Figure 27).
3. If flat washers are included in hardware package place flat washer over stem of caster before installing casters into feet. NOTE: Flat washers are not required with all units.
4. Insert casters into bottom of rear caster dolly by placing stem of caster into holes provided. Apply pressure and twisting motion until casters snap into place (Figure 28).
5. With tank drain facing you, take caster foot marked with the letter A (Figure 29) and place in slot on left side of tank also marked with the letter A. Secure with screw provided (Figure 30).
6. Take caster foot marked with the letter B (Figure 31) and place in slot on right side of tank also marked with the letter B. Secure with screw provided (Figure 32).
7. Insert casters into feet by placing stem of casters into holes provided. Apply pressure and twisting motion until casters snap into place (Figure 33).
8. Return tank to upright position.
9. Place tool basket (not standard with all models) with curved surface against tank on rear caster dolly assembly (Figure 34).



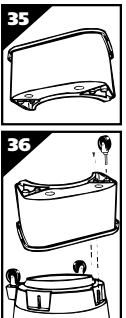
REAR CASTER ACCESSORY CADDY AND FRONT CASTER FEET ASSEMBLY

(Not standard with all models)

You will find four casters, two caster feet, an accessory caddy and four screws with your wet/dry vacuum.

If your accessory caddy looks like the one pictured in (Figure 35) assemble as follows:

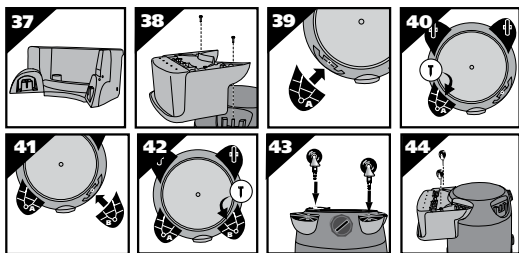
1. With cord disconnected from receptacle and tank cover removed, turn tank upside down so that the bottom is facing up.
2. Insert two caster feet into adjacent slots at front of tank. Secure with screws provided.
3. Take accessory caddy and place into remaining slots at back of tank. Secure with screws provided (Figure 36).
4. Install casters into caddy and feet by inserting the caster stems into the holes provided. Apply pressure and twisting motion until casters snap into place.



If your accessory caddy looks like the one pictured in (Figure 37) assembly as follows:

1. With cord disconnected from receptacle and tank cover removed, turn tank upside down so that the bottom is facing up.
2. Take accessory caddy and place into slots (on rear of tank opposite of drain). Secure with screws provided (Figure 38).
3. With tank drain facing you, take caster foot marked with the letter A (Figure 39) and place in slot on left side of tank also marked with the letter A. Secure with screw provided (Figure 40).
4. Take caster foot marked with the letter B (Figure 41) and place in slot on right side of tank also marked with the letter B. Secure with screw provided (Figure 42).

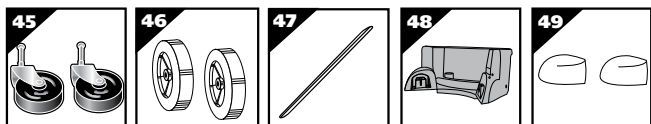
- If flatwashers are included in hardware package place flatwasher over stem of caster before installing casters into feet or accessory caddy. **NOTE:** Flatwashers are not required with all units.
- Install casters into caster feet and accessory caddy by inserting the caster stems into the holes provided. Apply pressure and twisting motion until caster snap into place (**Figure 43 & 44**).



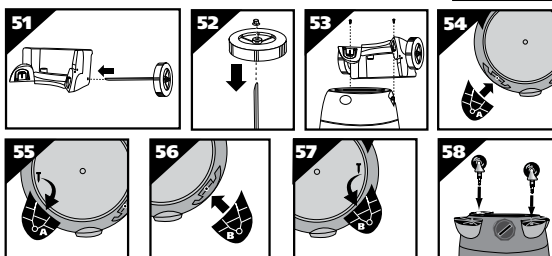
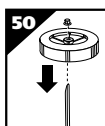
REAR WHEEL DOLLY/TOOL HOLDER AND FRONT CASTER FEET ASSEMBLY

(Not standard with all models)

You will find two casters (45), two large rear wheels (46), one axle (47), rear dolly/basket (48), two caster feet (49) and four screws with your wet/dry vacuum. Assemble as follows:

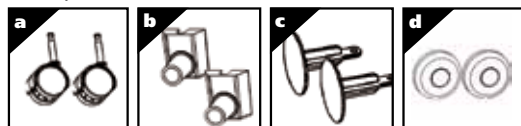


- With cord disconnected from receptacle and tank cover removed, turn tank upside down so that the bottom is facing up.
- Place axle upright on a hard surface and hammer on (1) cap nut. Place (1) wheel on axle and slide down to cap nut (**Figure 50**). Be sure flat side of wheel hub is facing outward.
- Slide axle through holes provided in dolly/basket (**Figure 51**).
- Slide remaining wheel onto axle and hammer on second cap nut (**Figure 52**).
- Take rear dolly assembly and place into slots (on rear of tank opposite drain) and secure with screws provided (**Figure 53**).
- With tank drain facing you, take caster foot marked with the letter A (**Figure 54**) and place in slot on left side of tank also marked with the letter A and secure with screw provided (**Figure 55**).
- Take caster foot marked with the letter B (**Figure 56**) and place in slot on right side of tank also marked with the letter B and secure with screw provided (**Figure 57**).
- Insert casters into feet by placing stem of caster into holes provided. Apply pressure and twisting motion until casters snap into place (**Figure 58**).
- Return tank to upright position.

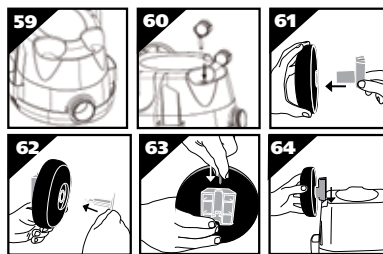


ASSEMBLY FOR ALL AROUND PLUS® SERIES

You will find two casters (a), two axle housings (b), two wheel plugs (c), two wheels (d), and two screws with your wet/dry vacuum. Assemble as follows:

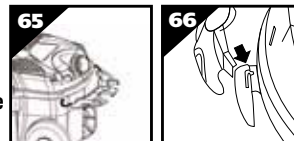


- With cord disconnected from receptacle and tank cover removed, turn tank upside down so that the bottom is facing up with the inlet towards you (**Figure 59**).
- Insert casters into bottom of tank by placing stem of caster into holes provided. Apply pressure and twisting motion until casters snap into place (**Figure 60**).
- Mount wheel onto axle with smooth face of wheel outward (**Figure 61**).
- Insert wheel plug through wheel and axle housing turning wheel plug until it seats flush with outside of wheel (**Figure 62**).
- Insert screw provided through back of axle housing (**Figure 63**).
- Slide axle housing into dovetail slot at rear of tank: axle housing is tapered and should slide into dovetail slot without excessive force (**Figure 64**). Tighten screw.
- Repeat steps 3 through 6 for other wheel assembly.
- Return tank to upright position.



TOOL HOLDER ASSEMBLY

- Replace tank cover and apply pressure with thumbs to each latch until it snaps tightly in place. Make sure both lid latches are clamped securely.
- With rear of unit facing you, take tool holder and position it with the tabs facing rear tank cover (**Figure 65**).
- Press tabs of tool holder into the slots on mounting lugs on rear of tank cover (**Figure 66**).
- Press down until tabs snap into place.

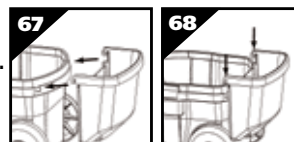


NOTE: TOOL HOLDER NOT COMPATIBLE WITH ACCESSORY BASKET.

ACCESSORY BASKET ASSEMBLY

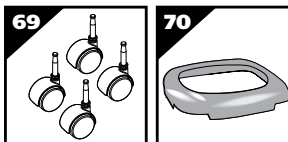
(Not standard with all models)

- With rear of tank facing you, take accessory basket and position with tabs facing rear of tank (**Figure 67**).
- Insert tabs of accessory basket into slots on rear of tank (**Figure 68**).
- Press down until basket is secured into place.

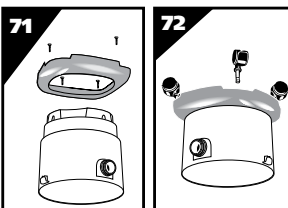


DOLLY AND CASTER ASSEMBLY FOR ALL AROUND PLUS® SERIES

You will find four casters (**Figure 69**) and one dolly (**Figure 70**) with your wet/dry vacuum. Assemble as follows:



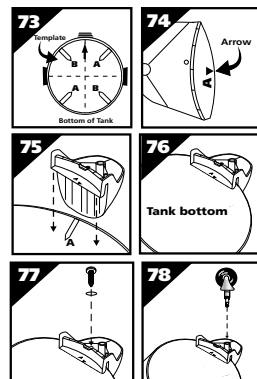
- With cord disconnected from receptacle and tank cover removed, turn tank upside down so that bottom is facing up.
- Take dolly and slide onto bottom of tank making sure to line up screw holes on dolly with screw holes on tank. Secure with screws provided (**Figure 71**).
- Install casters into dolly by inserting the caster stems into the holes provided. Apply pressure and twisting motion until the casters snap into place (**Figure 72**).
- Return tank to upright position.



CASTER FEET AND CASTER ASSEMBLY FOR METAL TANKS

(Not standard with all models)

- With cord disconnected from receptacle and tank cover removed, turn tank upside down so that the bottom is facing up.
- With a pair of scissors, trim the enclosed template to fit your size tank. Sizes will be 11", 14" or 16" diameters.
- Once template is cut out, place on bottom of tank. Align inlet arrow on template with center of inlet on tank (**Figure 73**).
- If caster feet are attached together, separate by removing webbing.
- Take caster foot marked with the letter A and align arrow on foot (**Figure 74**) with arrow on template also marked with the letter A (**Figure 75**).
- Place groove of foot over rim of tank and push until the caster foot is tight against bottom of tank (**Figure 76**).
- Secure feet with screw and washer when provided (**Figure 77**).

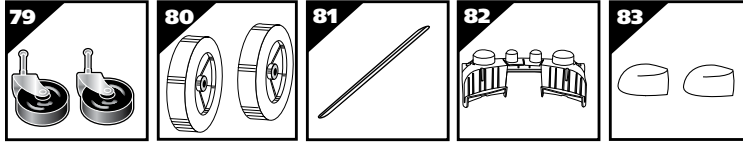


- Insert casters into feet by placing stem of caster into holes provided. Apply pressure and twisting motion until casters snap into place (Figure 78).
- Repeat steps 3-8 with remaining feet.
- Return tank to upright position.

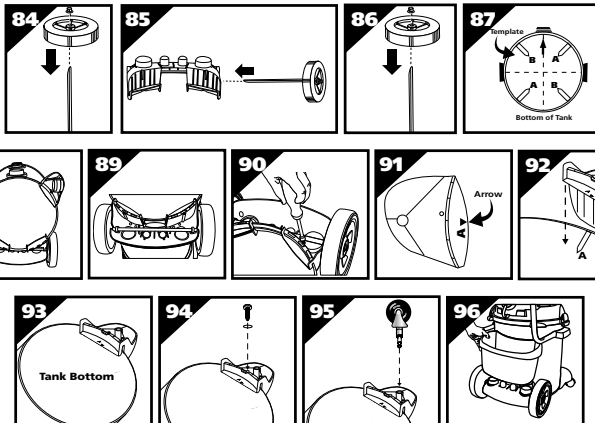
REAR WHEEL DOLLY/TOOL HOLDER AND FRONT CASTER FEET ASSEMBLY FOR METAL TANKS

(Not standard with all models)

You will find two casters (79), two large rear wheels (80), one axle (81), rear dolly (82), two caster feet (83) and four screws with your wet/dry vacuum. Assemble as follows:



- With cord disconnected from receptacle and tank cover removed, turn tank upside down so that the bottom is facing up.
- Place axle upright on a hard surface and hammer on (1) cap nut. Place (1) wheel on axle and slide down to cap nut (Figure 84). Be sure flat side of wheel hub is facing outward.
- Slide axle through holes provided in dolly (Figure 85).
- Slide remaining wheel onto axle and hammer on second cap nut (Figure 86).
- With a pair of scissors, trim the enclosed template to fit your size tank. Sizes will be 11", 14" or 16" diameters.
- Once template is cut out, place on bottom of tank, align inlet arrow on template with center of inlet on tank (Figure 87).
- Align cutouts in center of rear dolly with bars on template (Figure 88).
- Place groove of rear dolly over rim of tank and push until the dolly is tight against bottom of tank (Figure 89).
- Secure dolly with screw and washer provided (Figure 90).
- If caster feet are attached together, separate by removing webbing.
- Take caster foot marked with the letter A and align arrow on foot (Figure 91) with arrow on template also marked with the letter A (Figure 92).
- Place groove of foot over rim of tank and push until the caster foot is tight against bottom of tank (Figure 93).
- Secure feet with screw and washer provided (Figure 94).
- Insert casters into feet by placing stem of caster into holes provided. Apply pressure and twisting motion until casters snap into place (Figure 95).
- Place tool basket (not standard with all models), with curved surface against tank, on rear wheel dolly assembly (Figure 96).



DOLLY, CARRIAGE HANDLE AND BASKET ASSEMBLY FOR METAL TANKS

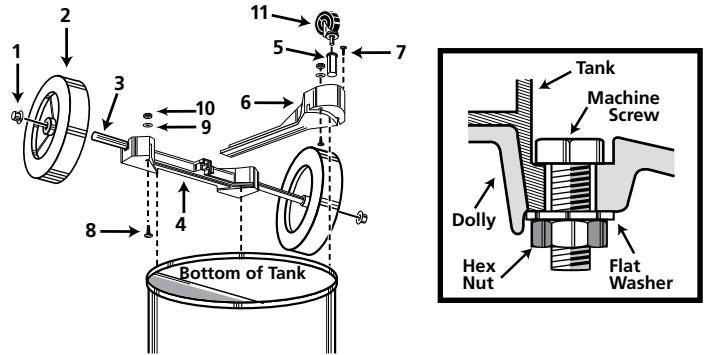
(Not standard with all models)

- Remove head from tank and place tank upside down on a flat surface.
- Place wheels on rear frame/axle assembly with extended hub of wheel towards dolly frame and place cap nuts on axle. Secure with hammer.
- Insert caster socket into front frame and secure with phillips head screw.
- Place groove in front frame into lip of tank and position so frame is directly above inlet.
- Position grooves of rear frame into lip of tank and align so rear and front frames engage.
- Secure dolly frame to tank by placing machine screws up through holes in dolly frame. Ensure head of screw is fully recessed in area provided. After machine screw is inserted, tighten with flatwasher and hex nut.
- Insert caster in caster socket and apply downward pressure until caster snaps into place.
- Return vacuum to upright position. Attach carriage handle to tank by inserting bolt through the center hole of handle and tank, secure with nut provided. Attach side handles with screws provided. Be sure to spread ends of carriage handle when assembling to prevent damage to tank.

- Insert basket (if provided) through center of carriage handle and slide into place.

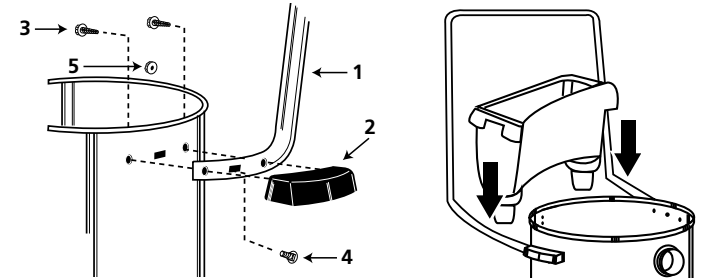
ITEM NUMBER & DESCRIPTION

- | | |
|------------------|--------------------------------------|
| 1. Cap nut | 7. #8 x 1/2" lg. Screw |
| 2. 8" wheel | 8. 1/4 - 20 x 3/4" lg. Machine screw |
| 3. Axle | 9. 1/4" Flatwasher |
| 4. Rear frame | 10. 1/4 - 20 Hex nut |
| 5. Caster socket | 11. Caster |
| 6. Front frame | |



ITEM NUMBER & DESCRIPTION

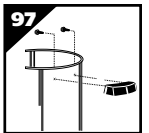
- | | |
|------------------------------|-------------------------|
| 1. Metal tank handle | 4. Bolt 1/4 - 20 x 1/2" |
| 2. Side tank handle | 5. 1/4 - 20 Hex nut |
| 3. #10 x 3/4" Screw hex head | |



SIDE TANK HANDLE ASSEMBLY

(Not standard with all models)

Attach side handles to tank with screws provided (Figure 97).



FOUR WHEEL HEAVY DUTY DOLLY ASSEMBLY

(Not standard with all models)

Tools required:

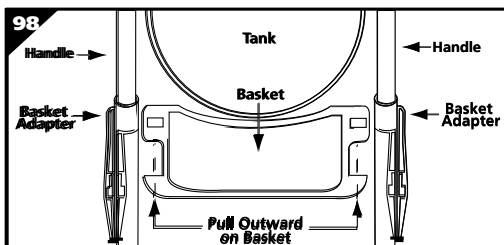
(2) 1/2 inch open end wrenches, (2) 7/16 inch open end wrenches, or a socket set and a hammer.

- Insert 2 1/2 inch long bolt through center hole in rear frame, attach split lockwasher and nut and tighten securely.
- Attach handle brace to back of rear frame with 5/8 inch long machine screws, lockwashers, and nuts. (Finger tighten only.)
- Position main frame inside rear frame. Attach (2) 5/8 inch long machine screws, lockwashers and nuts in both sides. Tighten securely.
- Attach handle uprights, inside main frame (make sure buttons at top face inward) using 5/8 inch long machine screws, lockwashers and nuts. (Finger tighten only.) Align holes at top of handle braces with holes in handle uprights. Attach with 1 1/4 inch long machine screws, lockwashers and nuts. (Tighten securely.)
- Go back and tighten machine screws at bottom of uprights and braces.
- Attach caster sockets (open end down) to front of main frame using 5/8 inch long machine screws, lockwashers and nuts. Insert casters into sockets.
- Slide basket adapters on handle.
- See Figure 98 and Figure 99 for correct installation of adapters.
- Attach handle onto uprights by pushing down and holding buttons in on uprights.
- Place tank retaining bracket through slot and bolt in rear frame and screw on knob.
- Slide bumper down over main dolly frame until it bottoms out.
- Place axle upright on a hard surface and hammer on (1) cap nut. Place (1) wheel on axle

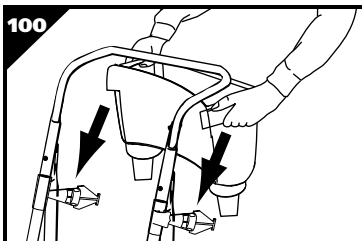
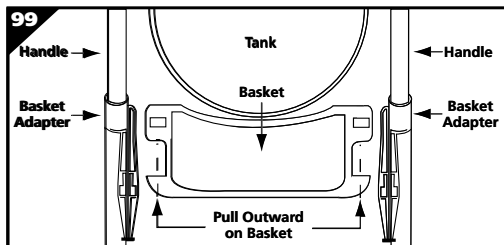
and slide down to cap nut. Slide axle through rear of frame and slide on other wheel. Before assembling cap nut on other end of axle, be certain dolly is assembled correctly. (You may place tank on dolly and tighten knob of retaining bracket to be sure of correct assembly.)

13. After ensuring dolly is assembled correctly remove tank and place dolly on side with installed cap nut on hard surface and hammer second cap nut on axle.
14. Place accessory basket on adapters and pull out on outer rim of basket and snap into place (Figure 100).

For 14" Diameter Tanks

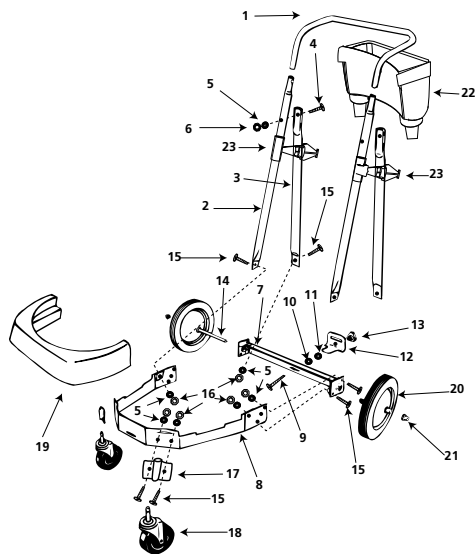


For 16" Diameter Tanks



ITEM NUMBER & DESCRIPTION

- | | |
|-----------------------------------------------------|--------------------------------------------|
| 1. Handle | 12. Tank retainer bracket |
| 2. Handle upright | 13. Threaded knob |
| 3. Handle brace | 14. Axle |
| 4. 1/4 - 20 x 1 1/4" Hex head machine screw (Black) | 15. 1/4 - 20 x 5/8" Hex head machine screw |
| 5. 1/4" External tooth lockwasher | 16. 1/4 - 20 Hex nut |
| 6. 1/4 - 20 Hex nut (Black) | 17. Caster socket |
| 7. Rear dolly frame | 18. Caster |
| 8. Main dolly frame | 19. Bumper |
| 9. 5/16 - 18 x 2 1/2" Hex head bolt | 20. 10" Wheel (25.4cm) |
| 10. 5/16" Split lockwash | 21. Cap nut |
| 11. 5/16 - 18 Hex nut | 22. Accessory basket |
| | 23. Basket adapter |



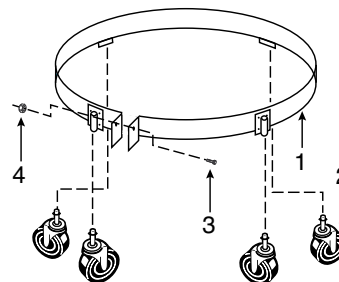
BAND DOLLY ASSEMBLY

(Not standard with all models)

1. Place casters into sockets on band assembly.
2. Place tank upside down and slip band assembly over lip on bottom of tank.
3. Insert bolt and tighten nut until secure.

ITEM NUMBER & DESCRIPTION

- | | |
|--------------------------|------------------------------------|
| 1. 55 Gal. band assembly | 3. Hex head bolt, 1/4 - 20 x 1 3/4 |
| 2. Caster | 4. Hex nut, 1/4 - 20 |



FILTRATION

CAUTION

Keep Filters Clean

The efficiency of these vacuum cleaners is largely dependent on the filter.

A clogged filter can cause overheating and possibly damage the vacuum cleaner.

Clean or replace filters regularly. Do not use the vacuum or filters for collecting hazardous or other health endangering materials.

NOTE: Never machine wash or dry filters.

DRY PICK UP OPERATION

INSTALLING FOAM SLEEVE AND REUSABLE DRY FILTER

(Not standard with all models)

WARNING – ALWAYS DISCONNECT THE PLUG FROM THE WALL OUTLET BEFORE REMOVING THE TANK COVER.

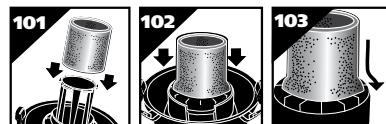
To pick up dust and dry material, you must install foam sleeve and reusable dry filter to ensure proper filtration. If the vacuum has been used to pick up liquids, the foam sleeve must be cleaned and dried before installing for dry pick up.

With tank cover in an upside down position, slide foam sleeve down over lid cage pulling until foam sleeve completely covers lid cage (Figure 101). **NOTE:** Bottom of foam sleeve must be positioned on the OUTSIDE of groove around lid cage for the reusable dry filter to fit properly (Figure 102, 103). Center the reusable dry filter on lid cage (Figure 104), slide mounting ring down over filter until ring is positioned against the ribs of the lid cage (Figure 105). The reusable dry filter should always be in position over the foam sleeve for dry pick up. To remove the filter for cleaning, remove mounting ring and filter from lid cage (Figure 106). To clean the reusable dry filter, shake off excess dirt and dust or (depending on the condition of the filter) rinse with water. Allow the filter to dry completely and re-install. **DO NOT MACHINE WASH OR DRY.**

IMPORTANT: BEFORE INSTALLING REUSABLE FILTER BE SURE THAT FOAM SLEEVE IS OUTSIDE OF GROOVE AND AROUND LID CAGE (Figure 102, 103).

NOTE: ENSURE THAT THE MOUNTING RING IS COMPLETELY SECURE AND IN POSITION BY PRESSING DOWN FIRMLY AROUND THE RING IN SEVERAL PLACES. BE SURE THE REUSABLE DRY DISC FILTER COMPLETELY COVERS THE FOAM SLEEVE. CHECK TO ENSURE THAT ALL EDGES OF THE REUSABLE DRY FILTER ARE SECURE UNDER THE MOUNTING RING.

CAUTION – Keep Filters Clean



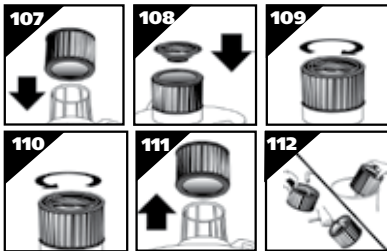


INSTALLING CARTRIDGE FILTER

(Not standard with all models)

NOTE: If foam sleeve is in position over lid cage for some models, it does not need to be removed before installing cartridge. Foam must be positioned on the INSIDE of groove around lid cage for cartridge to fit properly.

The cartridge filter can be used for wet or dry pick up; installation is the same for both. When picking up large quantities of water we recommend using the foam sleeve (**not standard with all models**) in position over the lid cage. Use the cartridge filter in position over the lid cage for most general dry material pick up. With the tank cover in an upside down position, slide the cartridge filter down over the lid cage, pushing until the filter seals against the cover (**Figure 107**). Place filter retainer into the top of the cartridge filter, hold the tank cover with one hand, turn the handle on the filter retainer clockwise to tighten, locking the filter into place (**Figures 108 & 109**). To remove the filter for cleaning, again hold the tank cover and turn the filter retainer counter-clockwise to loosen and remove, slide the cartridge filter off the lid cage (**Figures 110 & 111**). To clean the cartridge filter shake or brush off excess dirt or rinse (from the inside of the filter) with water, dry completely (approximately 24 hours) and re-install. (**Figures 112**). **NOTE: IF THE FILTER HAS BEEN USED FOR WET PICK UP, IT MUST BE CLEANED AND DRIED BEFORE USING FOR DRY PICK UP.**

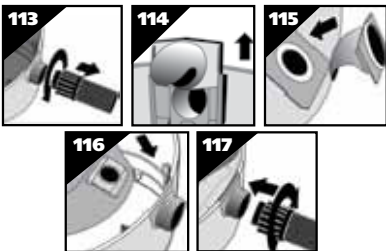


INSTALLING THE DISPOSABLE FILTER BAG

(Not Standard with All Models)

1. Use for dry pick up only. Use in conjunction with cartridge filter for picking up soot, cement, plaster or drywall dust.
2. With cord disconnected from receptacle, pull latches in an outward motion and remove tank cover.
3. Unscrew hose locking-nut and remove hose from inlet (**Figure 113**).
4. Remove inlet deflector from deflector guide (**Figure 114**). **NOTE:** Hose must be removed before inlet deflector can be taken out.
5. With the opening of the inlet deflector facing the bottom of the filter bag, slide collection bag collar over deflector matching notches of bag collar to tabs on inlet deflector, bag will only fit properly one way (**Figure 115**).
6. Slide deflector with collection bag attached into deflector guide (**Figure 116**).
7. Reinsert hose into inlet and tighten locking-nut (**Figure 117**).
8. When secured in place, expand bag and position around the inside of the tank.

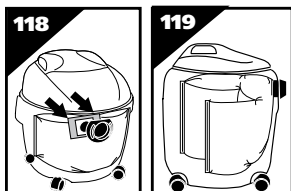
Locking Inlet:



Friction Inlet:

(Not standard with all models)

1. Use for dry pick up only.
2. With cord disconnected from receptacle, pull latches in an outward motion and remove tank cover.
3. Grasp cardboard collar firmly and slide rubber guard onto inlet fitting as far as possible (**Figure 118**).
4. When secured in place, expand bag and position around the inside of the tank (**Figure 119**).



WARNING FOR FINE DUST & POWDERS

When vacuuming fine dust, or powders of any kind (ex. plaster, drywall dust, cold ashes, concrete dust, etc.)...a **high efficiency drywall filter bag must be used**. When vacuuming normal household dust and debris, standard household disposable filter bags may be used. These "large bag" filters connect to the air inlet fitting on the inside of the vacuum tank.

FILTER SELECTION GUIDE

SIZE	Fine dust Drywall	Standard Household
5-8 U.S. Gal (18.9-30.3L)	90671	90661/90532
10-14 U.S. Gal (37.8-53L)	90672	90662/90534
15-22 U.S. Gal (56.8-83.2L)	90673	90663/90533

90107 REUSABLE DRY FILTER AND MOUNTING RING fits all Shop-Vac® Wet/Dry Vacuums.

90585 FOAM SLEEVE fits all Shop-Vac® Wet/Dry Vacuums and should remain in place at all times.

WET PICK UP OPERATION

Remove ALL dirt and debris found in the tank. The vacuum requires only a minimum of conversion when going from dry to wet pick up. Remove all dry use filters from the vacuum. Wet pick up requires the foam sleeve (**not standard with all models**) or cartridge filter (**not standard with all models**) to be in position over the lid cage. For proper installation instructions for wet pick up using the cartridge filter or foam sleeve, refer to Installing the Cartridge Filter. Do not use the reusable dry filter for wet pick up. Remove inlet deflector from the deflector guide sliding in an upward motion. **NOTE:** Hose must be removed before inlet deflector can be taken out. Reinstall being sure the opening of the inlet deflector is facing the top of the tank misting may occur if inlet deflector is not inserted properly. Misting in exhaust air may occur if the filter becomes saturated during wet pick up. If misting occurs, remove filter and allow to dry or, replace with another dry filter to eliminate the misting and possible dripping of liquid around the lid. Turn the unit off immediately upon completing a wet pick up job or when tank is full and ready to be emptied. Raise the hose to drain any excess liquid into the tank. The interior of the tank should be periodically cleaned.

The foam sleeve should be cleaned periodically as described in the following steps:

1. Always disconnect the plug from the wall receptacle before removing the tank cover. Place tank cover in an upside down position. Remove foam sleeve by sliding it up and off the lid cage.
2. Shake excess dust off foam sleeve with a rapid up and down movement.
3. Hold foam sleeve under running water for a minute or two, rinsing from the inside. A water wash is not always required, depending on the condition of the foam sleeve.
4. Gently wring out excess water, blot foam sleeve with a clean towel, and allow to dry. The foam sleeve is now ready to be reinstalled on the lid cage.

NOTE: WET PICK UP ACCESSORIES SHOULD BE WASHED PERIODICALLY, ESPECIALLY AFTER PICKING UP WET, STICKY KITCHEN ACCIDENTS. THIS CAN BE ACCOMPLISHED WITH A WARM SOLUTION OF SOAP AND WATER.

OPERATION

⚠ DANGER

This equipment incorporates parts such as switches, motors or the like that tend to produce arcs or sparks that can cause an explosion. **Do not pick up flammable, combustible, or hot materials. Do not use around explosive liquids or vapors, as electrical devices produce arcs or sparks which can cause a fire or explosion - do not use at filling stations or anywhere gasoline is stored or dispensed.**



WARNING – IF ANY OF THE MOTOR HOUSING PARTS SHOULD BECOME DETACHED OR BROKEN, EXPOSING THE MOTOR OR ANY OTHER ELECTRICAL COMPONENTS, OPERATION SHOULD BE DISCONTINUED IMMEDIATELY TO AVOID PERSONAL INJURY OR FURTHER DAMAGE TO THE VACUUM. REPAIRS SHOULD BE MADE BEFORE REUSING THE VACUUM.

BLOWER FEATURE

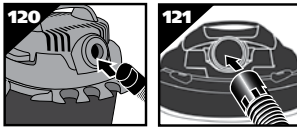
Blower Use

Some vacuum cleaners can be used as a powerful blower by inserting the hose into the motor housing exhaust port.

WARNING

ALWAYS WEAR EYE PROTECTION TO PREVENT ROCKS OR DEBRIS FROM BEING BLOWN OR RICOCHETING INTO THE EYES OR FACE WHICH CAN RESULT IN SERIOUS INJURY.

Your vacuum can be used as a powerful blower. To use your unit as a blower, clear hose of any obstruction. Insert machine hose end into blower port on rear of unit (Figure 120, 121). Twist slightly to tighten the connection. Caution should be used when using as a blower due to the powerful force of air when using certain attachments.



EMPTYING LIQUID WASTES FROM THE TANK

Not all units are equipped with tank drains. Follow the instructions, which apply to your specific unit.

Without Tank Drain

Liquid waste may be emptied by removing the tank cover. To empty, stop the motor and remove the plug from the wall receptacle. Remove the tank cover and deposit the liquid waste contents in a suitable drain. After tank is empty, return the cover to its original position. To continue use, plug the cord into the wall receptacle and turn the unit on.

With Tank Drain

Liquid waste may be emptied by removing the tank drain. To empty, turn unit off and remove plug from wall receptacle. Remove the drain cap and deposit the liquid waste contents in a suitable drain. After the tank is empty, return the drain cap to its original position. To continue use, plug the cord into the wall receptacle and turn the unit on.

AUTOMATIC SUCTION SHUT-OFF

The vacuum is equipped with an automatic suction shut-off that operates when picking up liquids. As the level of the liquid rises in the tank, an internal float rises until it seats itself against a seal at the intake of the motor, shutting off suction. When this happens, the motor will develop a higher than normal pitch noise and the suction is drastically reduced. If this occurs, turn unit off immediately. Failure to turn unit off after float rises and shuts off suction will result in extensive damage to the motor. To continue use, empty the liquid waste from the tank as outlined in the previous paragraph.

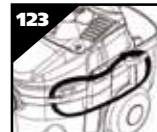
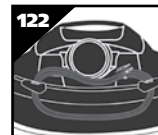
NOTE: IF ACCIDENTALLY TIPPED OVER, THE VACUUM COULD LOSE SUCTION. IF THIS OCCURS, PLACE VAC IN UPRIGHT POSITION AND TURN SWITCH OFF. THIS WILL ALLOW THE FLOAT TO RETURN TO ITS NORMAL POSITION, AND YOU WILL BE ABLE TO CONTINUE OPERATION.

LUBRICATION

No lubrication is necessary as the motor is equipped with lifetime lubricated bearings.

STORAGE

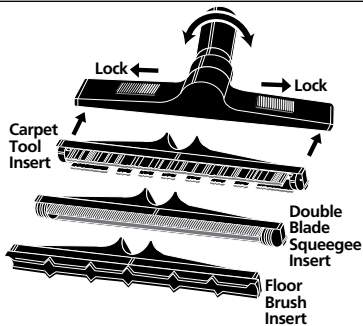
Before storing your vacuum cleaner the tank should be emptied and cleaned. The power cord can be wrapped around the cord wraps provided on the tank cover on rear or side of unit (Figure 122, 123, 124). Accessories may be stored in the tool holder (not standard on all models) so they can be readily available. **The vacuum should be stored indoors.**



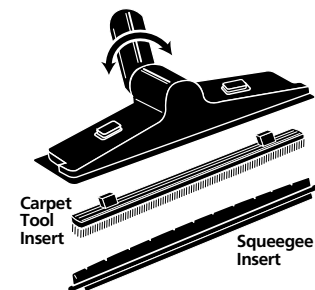
ACCESSORIES, HOSES AND WANDS

All Shop-Vac® vacuums covered in this manual come with accessories to cover wet and dry cleanup jobs. Not all vacs include all accessories shown.

Nozzles and Accessories



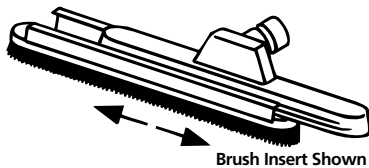
Inserts lock into place by sliding red buttons. Elbow swivels.



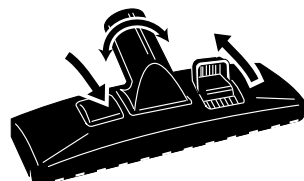
Inserts snap-in and out. Elbow swivels.



All Friction Fit Accessories
Insert wand end or hose into accessory and twist to form a tight fit.

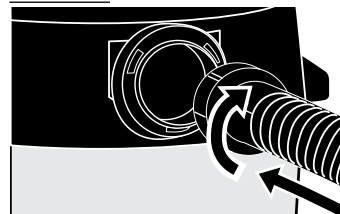


Brush Insert Shown
Inserts lock into place by sliding insert onto nozzle.

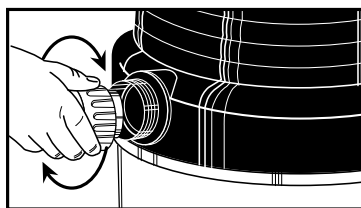


Levers control brush position for various types of cleaning.

Hoses

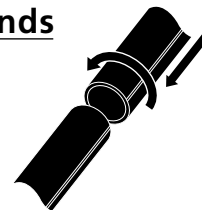


Insert machine hose end into tank and twist to form a tight fit.

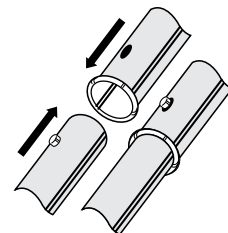


Posi-Lock Hoses
Insert hose collar onto threaded tank inlet and tighten.

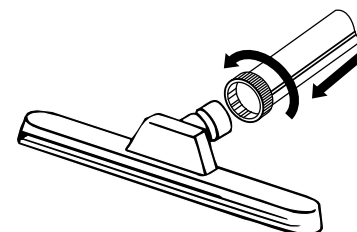
Wands



All Friction Fit Wands
Insert wand ends together and twist to form a tight fit.



Positive Locking Wands
Insert wand ends together until metal push button locks.



Locking Nut Wand End
Insert wand end over nozzle and tighten nut.

SHOP-VAC® VACUUM FILTER CLEANING REFERENCE



Foam Sleeve

Rinse with water, dry and reinstall.



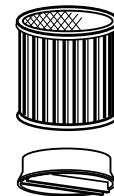
Full Polyester Filter

Brush off dirt and reinstall; if filter gets wet, rinse with water, dry and reinstall.



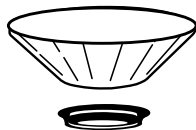
Super Performance Filter

Dispose of after filter develops rips or tears.



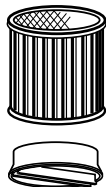
Cleanstream® Cartridge Filters

Clean installed filter by simply tapping or shaking the vacuum unit. To restore optimum airflow, remove filter, tap end cap against a hard surface to loosen debris. Additional debris can be removed by rinsing outside surface of filter with running water. Avoid dampening inside of filter. Completely air dry filter after washing.



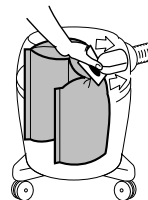
Reusable Disc Filter

Rinse with water, dry and reinstall; do not machine wash.



Cartridge Filter & Ultra Web® Cartridge Filters

From inside of filter, rinse with water, dry completely and reinstall.



All Collection Bags

Dispose of bag when full.

Troubleshooting Chart

Symptom	Possible Cause(s)	Corrective Action
Parts/accessories missing	1. Packed in tank	1. Check in tank
Vacuum cleaner will not start	1. No power at receptacle 2. Defective switch 3. Defective motor	1. Check for power 2. Replace switch 3. Replace motor
Dust discharging from exhaust	1. Filter not installed/not installed properly 2. Filter damaged 3. Filter clogged or dust is too fine 4. Filter not functional	1. Properly install filter 2. Replace filter 3. Use more efficient filter 4. Clean and replace filter
Loss of suction	1. Loose hose connection 2. Filter clogged 3. Full tank 4. Hole in hose	1. Tighten hose connection 2. Clean or replace filter 3. Empty tank 4. Replace hose
Static shock	1. Dry environment 2. Relative humidity of air is low	1. Add moisture to air (if practical, use a console or installed humidifier). 2. This situation is temporary and does not affect the use of the vacuum cleaner.