



SPX Corporation
655 Eisenhower Drive
Owatonna, MN 55060-0995 USA
Phone: (507) 455-7000
Tech. Serv.: (800) 533-6127
Fax: (800) 955-8329
Order Entry: (800) 533-6127
Fax: (800) 283-8665
International Sales: (507) 455-7223
Fax: (507) 455-7063

Form No. 529234

Assembly Instructions for:

2018A

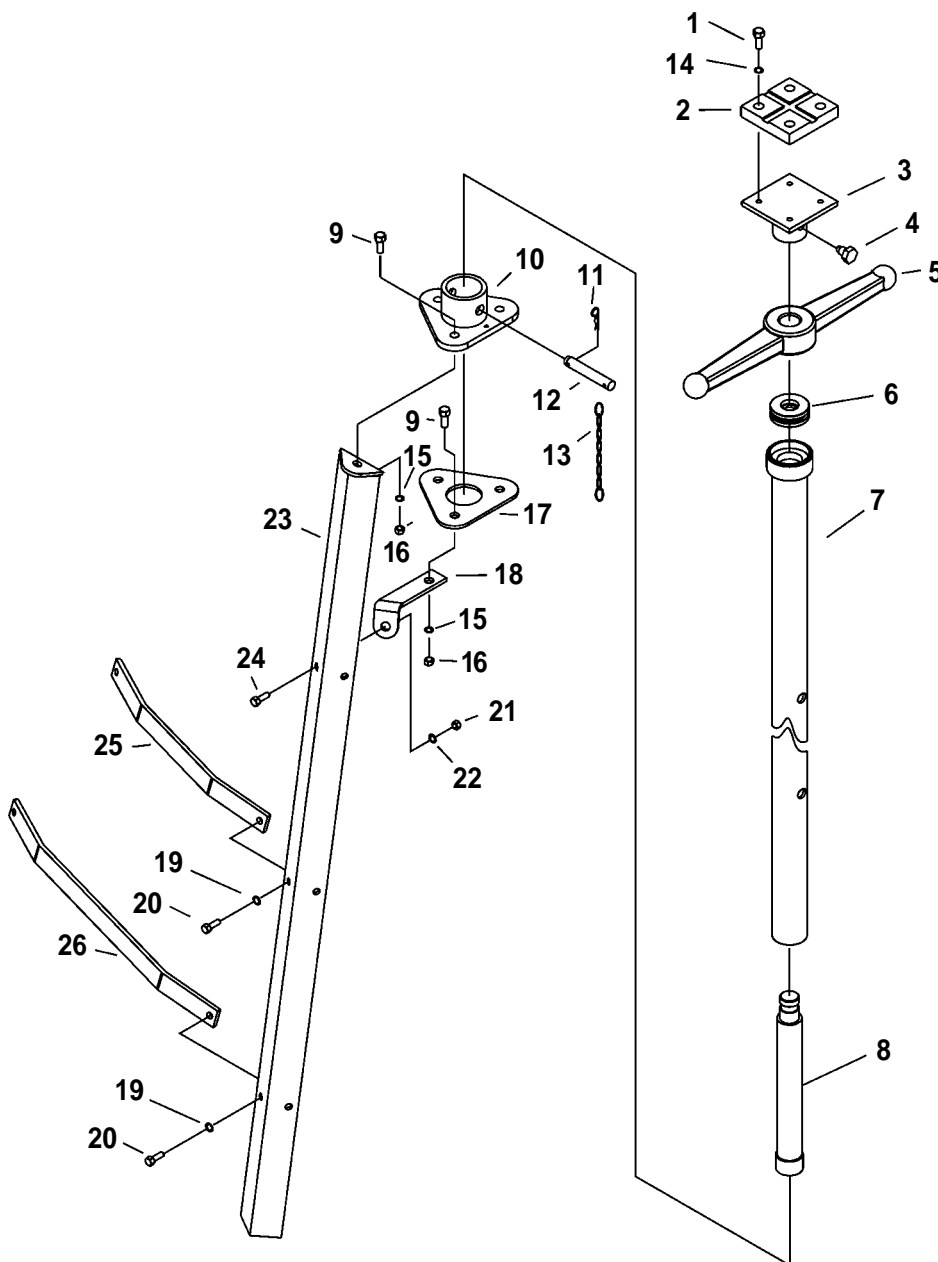
Underhoist Tripod Stand

Max. Capacity: 2 Tons

The underhoist tripod stand is designed to help stabilize a vehicle supported by an automotive lift.

Parts List

Item No.	Qty.	Description
1	4	Bolt
2	1	Saddle
3	1	Saddle Base
4	1	Bolt
5	1	Handle
6	1	Bearing
7	1	Outer Tube
8	1	Screw Rod
9	6	Bolt
10	1	Bushing Base
11	1	Pin
12	1	Pin
13	1	Chain
14	4	Washer
15	6	Washer
16	6	Nut
17	1	Fixing Plate
18	3	Fixing Bracket
19	12	Washer
20	12	Bolt
21	3	Nut
22	3	Washer
23	3	Leg
24	3	Bolt
25	3	Link A
26	3	Link B



Sheet No. 1 of 1

Issue Date: January 2, 2007 Rev. C

Replacement Kit

Hardware Kit No. 529293 includes:

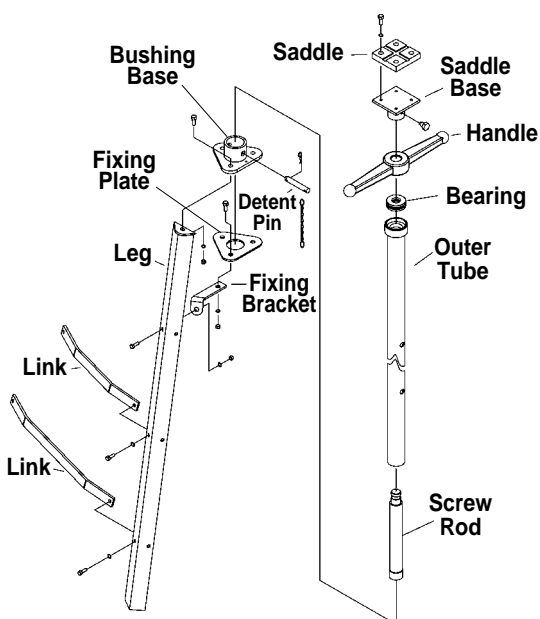
Item No.	Qty.	Description	Item No.	Qty.	Description
1	4	Bolt	15	6	Washer
2	1	Saddle	16	6	Nut
4	1	Bolt	19	12	Washer
9	6	Bolt	20	12	Bolt
11	1	Pin	21	3	Nut
12	1	Pin	22	3	Washer
13	1	Chain	24	3	Bolt
14	4	Washer			

Safety Precautions

- WARNING:** To prevent personal injury and/or property damage,
- Study, understand, and follow all instructions before operating this device.
 - If the operator cannot read these instructions, operating instructions and safety precautions must be read and discussed in the operator's native language.
 - Wear eye protection that meets ANSI Z87.1 and OSHA standards.
 - Do not exceed the rated capacity of 4,000 lbs.
 - Use only on a hard, level surface.
 - Do not use the stand to support a vehicle.
 - Center the load on the saddle.
 - Use stands in pairs to stabilize the vehicle before starting repairs.
 - Do not attempt to remove the detent pin with a load on the stand.



Assembly Instructions



Tube Assembly

1. Use bolts to attach saddle to saddle base.
2. Slide screw rod into outer tube. Install bearing on outer tube.
3. Install handle and saddle base onto screw rod and secure with a bolt.

Stand Assembly

1. Loosely attach links to legs using bolts, washers, and nuts provided.
2. Loosely attach fixing brackets to legs using bolts, washers, and nuts provided.
3. Loosely attach fixing plate to fixing brackets using bolts, washers, and nuts provided.
4. Install bushing base to fixing plate.
5. Slide outer tube assembly through bushing base and fixing plate. Use detent pin and chain assembly to lock tube in any position.
6. Securely tighten bolts and nuts.

Raise the Load

WARNING! To prevent personal injury and/or property damage, do not attempt to remove the detent pin with a load on the stand.

Major adjustments in the height of the stand must be made **BEFORE** putting a load on the stand. For a major adjustment, remove the detent pin and raise the outer tube to desired height. Replace detent pin. Once a load is on the stand, minor adjustments can be made by turning the adjusting handle clockwise to a desired height.

Lower the Load

Follow the instructions for raising the load, except turn the adjusting handle counterclockwise.