



# Operating Instructions & Service Parts Manual

## All Terrain Vise # 10010



*Record purchase information for quick reference:*

Stock No.:	10010
Serial No.:	
Purchased from:	
Date purchased:	

**WALTER MEIER (Manufacturing) Inc.**

427 New Sanford Road  
LaVergne, Tennessee 37086  
Ph.: 800-274-6848  
[www.wiltontools.com](http://www.wiltontools.com)

**Manual No. M-10010**  
Rev A 09/2013

Copyright © 2013 Walter Meier (Manufacturing) Inc.

# Warranty and Service

Walter Meier (Manufacturing) Inc., warrants every product it sells. If one of our tools needs service or repair, one of our Authorized Service Centers located throughout the United States can give you quick service. In most cases, any of these Walter Meier Authorized Service Centers can authorize warranty repair, assist you in obtaining parts, or perform routine maintenance and major repair on your WILTON® tools. For the name of an Authorized Service Center in your area call 1-800-274-6848.

## MORE INFORMATION

Walter Meier is consistently adding new products to the line. For complete, up-to-date product information, check with your local Walter Meier distributor, or visit [wiltontools.com](http://wiltontools.com).

## WARRANTY

WILTON products carry a lifetime warranty.



## WHAT IS COVERED?

This warranty covers any defects in workmanship or materials subject to the exceptions stated below. Cutting tools, abrasives and other consumables are excluded from warranty coverage.

## WHO IS COVERED?

This warranty covers only the initial purchaser of the product.

## WHAT IS THE PERIOD OF COVERAGE?

The general WILTON warranty lasts for the time period specified in the product literature of each product.

## WHAT IS NOT COVERED?

This warranty does not cover defects due directly or indirectly to misuse, abuse, negligence or accidents, normal wear-and-tear, improper repair or alterations, or lack of maintenance.

## HOW TO GET SERVICE

The product or part must be returned for examination, postage prepaid, to a location designated by us. For the name of the location nearest you, please call 1-800-274-6848.

You must provide proof of initial purchase date and an explanation of the complaint must accompany the merchandise. If our inspection discloses a defect, we will repair or replace the product, or refund the purchase price, at our option.

We will return the repaired product or replacement at our expense unless it is determined by us that there is no defect, or that the defect resulted from causes not within the scope of our warranty in which case we will, at your direction, dispose of or return the product. In the event you choose to have the product returned, you will be responsible for the handling and shipping costs of the return.

## HOW STATE LAW APPLIES

This warranty gives you specific legal rights; you may also have other rights which vary from state to state.

## LIMITATIONS ON THIS WARRANTY

WALTER MEIER (MANUFACTURING) INC., LIMITS ALL IMPLIED WARRANTIES TO THE PERIOD OF THE LIMITED WARRANTY FOR EACH PRODUCT. EXCEPT AS STATED HEREIN, ANY IMPLIED WARRANTIES OR MERCHANTABILITY AND FITNESS ARE EXCLUDED. SOME STATES DO NOT ALLOW LIMITATIONS ON HOW LONG THE IMPLIED WARRANTY LASTS, SO THE ABOVE LIMITATION MAY NOT APPLY TO YOU.

WALTER MEIER SHALL IN NO EVENT BE LIABLE FOR DEATH, INJURIES TO PERSONS OR PROPERTY, OR FOR INCIDENTAL, CONTINGENT, SPECIAL, OR CONSEQUENTIAL DAMAGES ARISING FROM THE USE OF OUR PRODUCTS. SOME STATES DO NOT ALLOW THE EXCLUSION OR LIMITATION OF INCIDENTAL OR CONSEQUENTIAL DAMAGES, SO THE ABOVE LIMITATION OR EXCLUSION MAY NOT APPLY TO YOU.

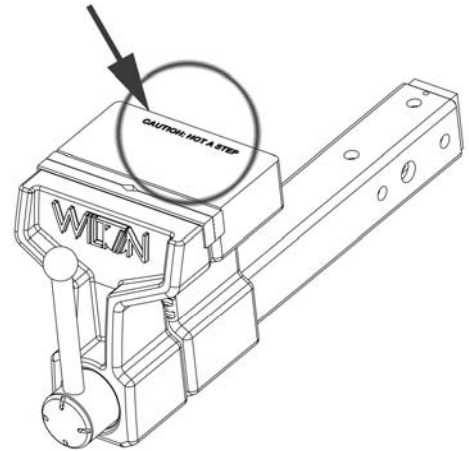
Walter Meier sells through distributors only. The specifications in Walter Meier catalogs are given as general information and are not binding. Members of Walter Meier reserve the right to effect at any time, without prior notice, those alterations to parts, fittings, and accessory equipment which they may deem necessary for any reason whatsoever.

**Read and understand the entire owner's manual before attempting installation or operation.**



## Warnings

1. Keep hands clear of jaws.
2. Make sure vise is properly secured to hitch receiver. If using accessory bench receiver, vise must be properly secured within receiver, and receiver bolted to bench with appropriate fasteners (not included).
3. Do not use the vise as a step; it may cause an individual to slip and fall. This caution is also inscribed in the anvil of the vise – see Figure 1.
4. Keep ground or floor around the vise uncluttered and free of scrap material, oil and grease. Wear non-slip footwear.
5. Do not place combustible materials or pressurized containers in vise.
6. Do not force the tool. Do not use a hammer against the handle, or use additional leverage such as cheater bars or pipe extensions, to tighten the screw handle. For heavier jobs, use a larger vise.
7. Vehicle safety brake must be engaged before operating vise.
8. Do not drive vehicle with material in the vise.
9. Use caution when backing a vehicle with the vise installed.
10. Make sure vise handle is locked and hitch pin is properly engaged before driving vehicle.
11. Read and understand all warnings posted on the vise and in this manual. Failure to comply with all of these warnings may cause serious injury.
12. Do not use this vise for other than its intended use.
13. Replace warning labels if they become obscured or removed.
14. Always wear ANSI-approved safety glasses or face shield when using striking or power tools with this vise. (Everyday eyeglasses only have impact resistant lenses; they are *not* safety glasses.) Wear hearing protection when needed.
15. Do not wear loose clothing or jewelry. Confine long hair. Keep clothing, hair and gloves away from moving parts.
16. Some dust created by power sanding, sawing, grinding, drilling and other construction activities contain chemicals known to cause cancer, birth defects or other reproductive harm. Some examples of these chemicals are:
  - Lead from lead based paint.
  - Crystalline silica from bricks, cement and other masonry products.
  - Arsenic and chromium from chemically treated lumber.Your risk of exposure varies, depending on how often you do this type of work. To reduce your exposure to these chemicals, work in a well-ventilated area and work with approved safety equipment, such as face or dust masks that are specifically designed to filter out microscopic particles.
17. Always inspect vise before use. Check for misalignment of moving parts, binding of moving parts, breakage of parts, mounting and any other conditions that may affect the tool's operation. If damage is found, repair the vise immediately or replace it.
18. Have tool serviced only by qualified personnel, using authorized replacement parts.
19. Provide for adequate space surrounding work area and sufficient lighting.



*Figure 1*

- 20. Do not use this tool while tired or under the influence of drugs, alcohol or medication.
- 21. Keep bystanders, especially children, away from the area while using the vise.
- 22. Give your work undivided attention. Looking around, carrying on a conversation and “horse-play” are careless acts that can result in serious injury.
- 23. Maintain a balanced stance at all times. Do not overreach while performing the work.

About this vise

The WILTON All Terrain Vise has been designed and constructed to provide consistent long-term operation, if used in accordance with instructions as set forth in this document. The body is formed of high-strength ductile cast iron. The leadscrew is precision ground carbon steel with acme threads. The tube has adjusting screws top and side, for eliminating play inside the hitch receiver. The screw handle can be locked in position to prevent movement of the jaws.

About this manual

This manual is provided by Walter Meier (Manufacturing) Inc. covering operation and maintenance procedures for a WILTON All Terrain Vise. This manual contains instructions on installation, safety precautions, general operating procedures, maintenance instructions and parts breakdown.

The instructions and warnings presented in this manual cannot, of course, cover all possible situations or conditions in which a vise may be used. The operator is expected to take appropriate precautions and exercise common sense. As with any tool operation, safety of the operator and bystanders should be first priority.

If there are questions or comments, please contact your local supplier or Walter Meier. Walter Meier can also be reached at our web site: [www.waltermeier.com](http://www.waltermeier.com).

Retain this manual for future reference. If the tool transfers ownership, the manual should accompany it.

**⚠WARNING** Read and understand the entire contents of this manual before installing or using the All Terrain Vise. Failure to comply may cause serious injury.

Specifications

Model .....	WILTON All Terrain Vise
Stock number.....	10010
Required hitch receiver.....	2 in. square
Jaw width .....	150 mm (6 in.)
Maximum jaw opening.....	145 mm (5-3/4 in.)
Jaw insert hardness.....	45-56 HRC
Pipe capacity .....	3/4 - 3 in. (or 1/2 - 3 in. with one jaw insert removed)
Clamping force.....	1 ton
Throat depth .....	127 mm (5 in.)
Jaw travel per one rotation of handle .....	4 mm (0.15 in.)
Weight.....	18 kg (39.68 lb)
Dimensions .....	489 x 150 x 185 mm (19-1/4 x 6 x 7-1/4 in.)
Primary materials.....	steel and ductile iron
Paint finish .....	powder coat enamel

*The specifications in this manual were current at time of publication, but because of our policy of continuous improvement, Walter Meier (Manufacturing) Inc., reserves the right to change specifications at any time and without prior notice, without incurring obligations.*

## Setup and assembly

**⚠ WARNING** Read and understand all instructions and warnings in this manual before attempting installation or operation of hitch vise. Failure to comply may cause serious injury.

### Shipping contents

- 1 Vise
- 1 Hitch pin with cotter pin
- 1 Bench mount receiver
- 1 Instructions and parts manual
- 1 Warranty card

Remove contents from shipping carton, and check for shipping damage or missing parts. If either of these is discovered, contact your dealer or Walter Meier (Manufacturing) Inc., at the phone number on the cover.

### Installing to hitch

Refer to Figure 2.

The All Terrain Vise is designed to be inserted into a 2-inch square hitch receiver.

1. Slide vise tube into receiver. If there is too much “play” within the receiver, remove the vise and rotate any of four screws (A) on the vise tube, with a 5/16” hex key. Reinstall and test for fit, making further adjustments as needed.
2. Align hole in vise tube with hole in hitch receiver.
3. Insert hitch pin (B) completely through receiver and vise tube.
4. Install cotter pin (C) through hole in hitch pin.

**⚠ WARNING** Cotter pin must be properly secured in hitch pin before operating vise or moving vehicle to which vise is mounted.

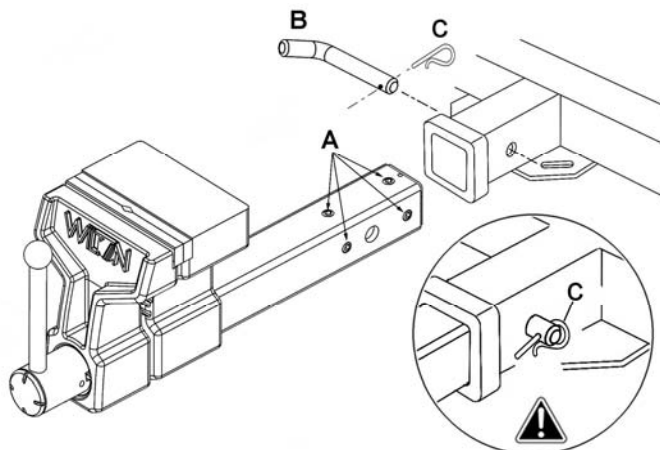


Figure 2

### Installing to bench/table

Bench or table must be capable of supporting combined weight of vise, workpiece and applied forces. If additional strength is needed, mount supporting boards beneath the table.

Refer to Figures 3 and 4.

1. Position vise on bench. The rear (or static) jaw should just overhang the bench to prevent obstruction when inserting long work pieces.
2. Place bench receiver over vise tube and mark hole positions on bench. Figure 3 identifies hole dimensions. Drill holes of appropriate diameter in table.
3. Mount bench receiver to bench using fasteners of suitable grade, length and diameter. The hole in the side of the receiver should be at the end farthest from the vise.
4. Slide vise tube into bench receiver. If there is too much “play” within the receiver, rotate any of the four adjustment screws on the tube (A, Figure 2).
5. Install hitch pin through holes of tube and receiver (Figure 4).
6. Install cotter pin into hitch pin hole.

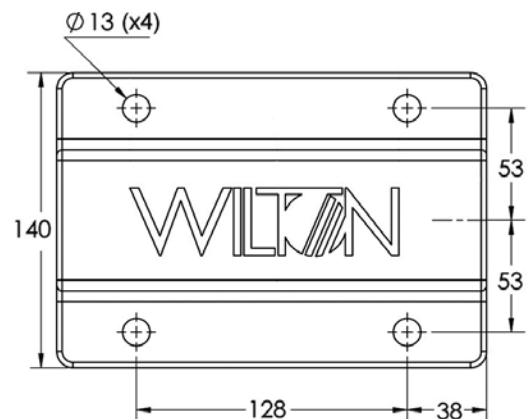


Figure 3 (dimensions in millimeters)

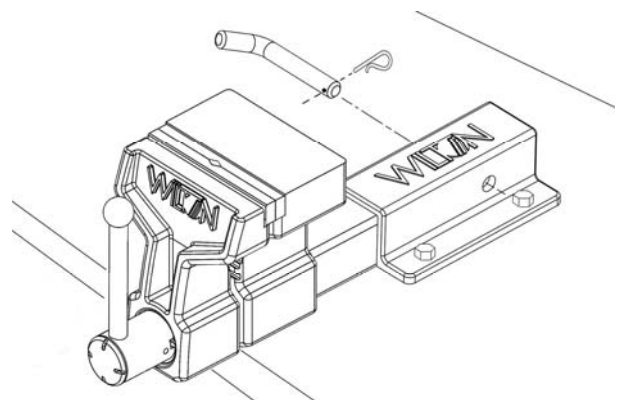


Figure 4

## Adjustments and Operation

Before use, inspect the vise for cracks, misalignment, binding, or any other problems that may compromise its safe use.

### Handle locking

Refer to Figure 5.

The handle has a ball detent system that allows the handle to be locked, thus preventing the jaws from being moved out of position.

Turn the handle to upright position. Grasp the handle hub and push in until it seats. The jaws are now locked. To unlock, grasp the handle hub and pull out until it releases.

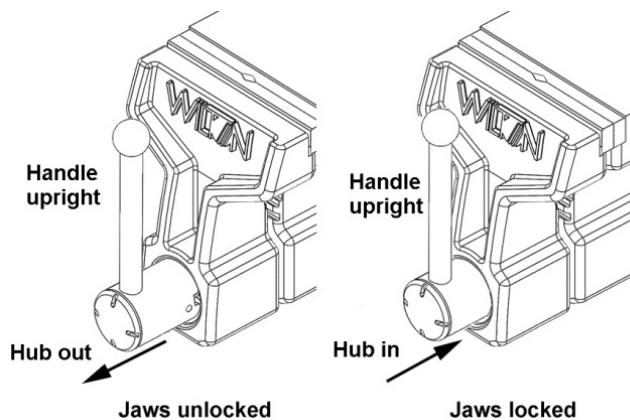


Figure 5

### To operate the hitch vise:

1. Turn screw handle counterclockwise to open jaws. Do not try to force jaws apart farther than the rated capacity/jaw opening.
2. Choose the straight jaws or pipe jaws. Insert workpiece and turn handle clockwise to close jaws.
3. Tighten enough that workpiece can no longer be shifted within the jaws. Do not overtighten, as this may damage workpiece and/or jaws.

## Maintenance

**Inspection:** Before use, inspect vise for misalignment, binding or cracked/damaged parts, or any other condition that may affect safe operation. Repair or replace a damaged vise.

**Cleaning:** After use, wipe external surfaces of the vise with a clean rag. Apply a light coat of machine oil to exposed metal areas.

**Lubrication:** The leadscrew is permanently lubricated and enclosed, and should not require attention. Lubricate other moving parts of the vise with machine oil.

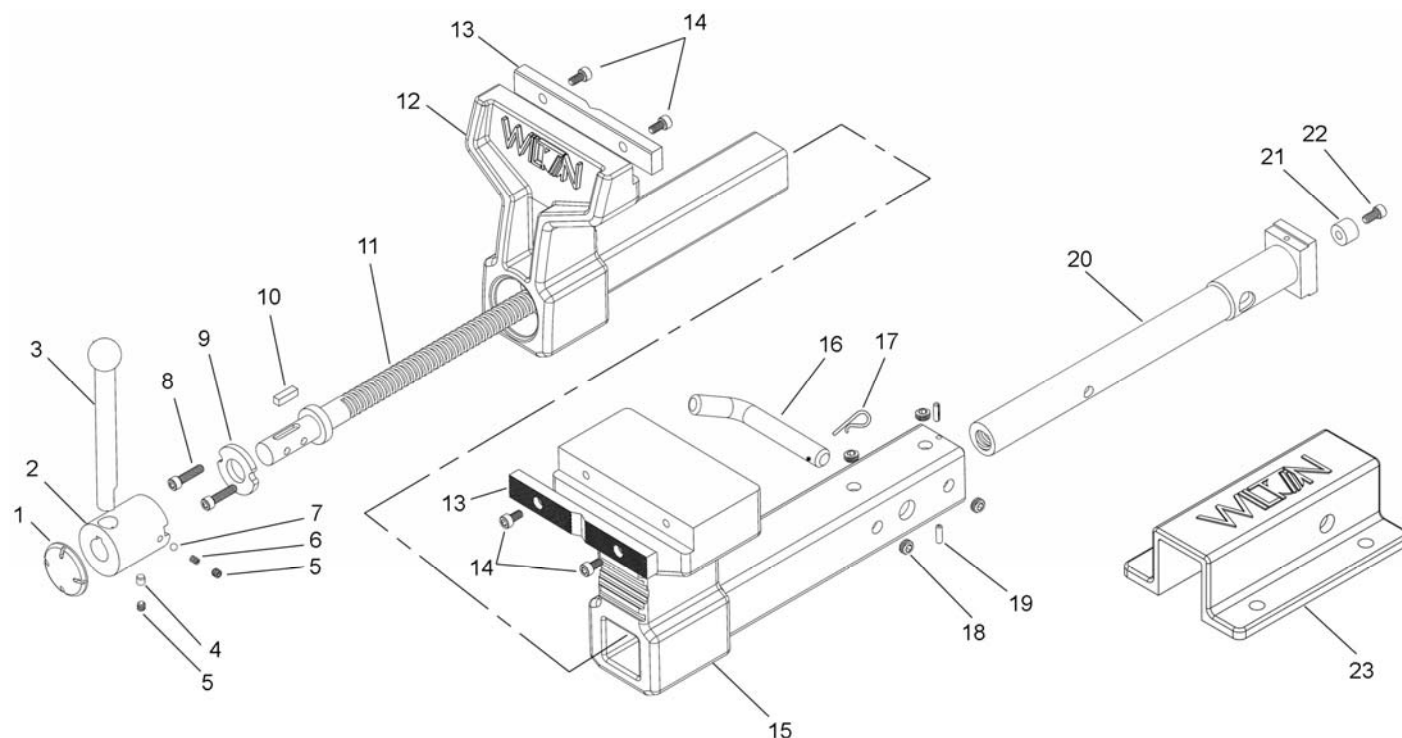
**Jaw insert replacement:** Use a 5mm hex key to remove two screws on the jaw insert. Securely tighten the new jaw insert to the vise using the same screws.

**NOTE:** If replacing jaw inserts, replace both as a set.

## Replacement Parts

To order parts or reach our service department, call 1-800-274-6848 Monday through Friday (see our website for business hours, [www.wilontools.com](http://www.wilontools.com)). Having the Model Number and Serial Number of your machine available when you call will allow us to serve you quickly and accurately.

## WILTON All Terrain Vise #10010 – Exploded View



## WILTON All Terrain Vise #10010 – Parts List

Index No	Part No	Description	Size	Qty
.....	ATV-HA.....	Handle Assembly (index #1-7).....		1
1.....	ATV-01.....	Cap.....		1
2.....		Handle Hub.....		1
3.....		Handle Shaft.....		1
4.....	ATV-04.....	Set Pin.....	Ø5.1 x 9 mm.....	1
5.....	ATV-05.....	Slotted Head Set Screw.....	M6x5.....	2
6.....	ATV-06.....	Spring.....	Ø4.5x6 mm.....	1
7.....	SB-5MM.....	Steel Ball.....	Ø5 mm.....	1
8.....	ATV-08.....	Socket Head Cap Screw.....	#10-24x3/8".....	2
9.....	ATV-09.....	Spindle Collar.....		1
10.....	ATV-10.....	Key.....	6x28 mm.....	1
11.....	ATV-11.....	Lead Screw.....		1
12.....		Floating Jaw Body.....		1
13.....	ATV-13.....	Jaw Insert (set of 2).....	6"L x 1/2"W x 7/8"H.....	1 set
14.....	TS-1503031.....	Socket Head Cap Screw.....	M6x12.....	4
15.....		Stationary Jaw Body.....		1
16.....	ATV-16.....	Hitch Pin.....	Ø16 mm.....	1
17.....	ATV-17.....	Cotter Pin.....	Ø4 mm.....	1
18.....	ATV-17.....	Adjustment Screw.....		4
19.....	ATV-18.....	Roll Pin.....	4x12 mm.....	2
20.....	ATV-19.....	Spindle Nut.....		1
21.....	ATV-20.....	Spacer.....		1
22.....	JHM610-22.....	Socket Head Cap Screw.....	M6x14.....	1
23.....	ATV-22.....	Bench Mount Receiver.....		1

Some parts are shown for reference only and may not be available as replacement parts.



**WALTER MEIER (Manufacturing) Inc.**

427 New Sanford Road  
LaVergne, Tennessee 37086  
Phone: 800-274-6848  
[www.wiltontools.com](http://www.wiltontools.com)