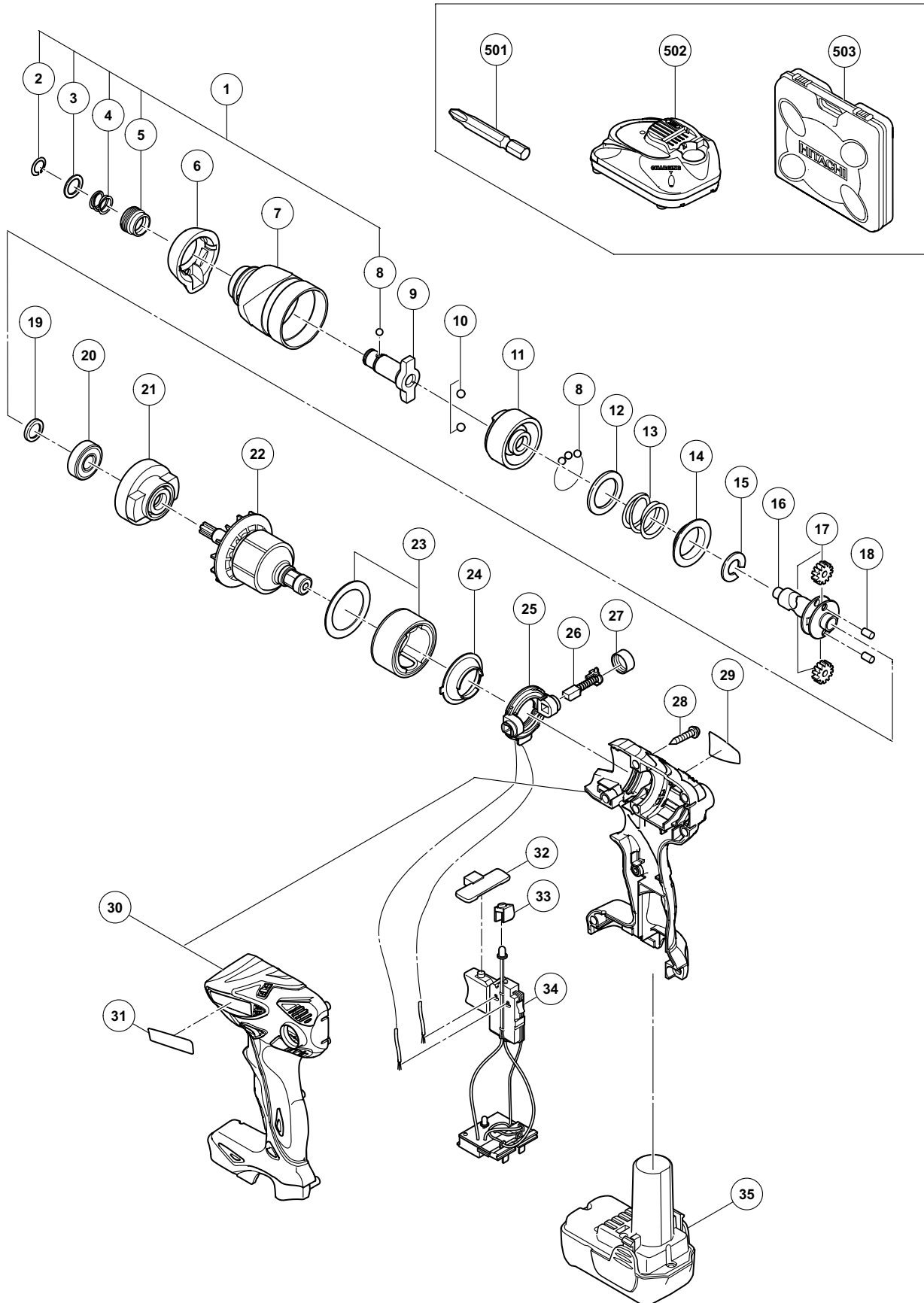


ELECTRIC TOOL PARTS LIST

CORDLESS DRIVER
Model WH 10DL

2008·3·4
(E1)



PARTS

WH 10DL

ITEM NO.	CODE NO.	DESCRIPTION	NO. USED	REMARKS	
1	329-538	GUIDE SLEEVE ASS'Y	1	INCLUD. 2-5, 8	
2	995-933	RETAINING RING	1		
3	322-739	WASHER (F)	1		
4	322-737	GUIDE SPRING (C)	1		
5	329-537	GUIDE SLEEVE (C)	1		
6	329-535	FRONT CAP	1		
7	329-536	HAMMER CASE	1		
8	959-148	STEEL BALL D3.175 (10 PCS.)	29		
9	329-555	ANVIL (S)	1		
10	959-154	STEEL BALL D5.556 (10 PCS.)	2		
11	329-540	HAMMER	1		
12	315-978	WASHER (J)	1		
13	329-542	HAMMER SPRING	1		
14	316-172	WASHER (S)	1		
15	322-740	STOPPER (A)	1		
16	329-541	SPINDLE	1		
17	318-444	IDLE GEAR SET (2 PCS.)	2		
18	324-234	NEEDLE ROLLER (A)	2		
19	319-911	WASHER (E)	1		
20	690-1VV	BALL BEARING 6901VVCMP52L	1		
21	329-545	RING GEAR	1		
22	360-842	ARMATURE AND PINION SET	1		
23	329-588	MAGNET (G) (W/SIDE YOKE)	1		
24	329-546	DUST GUARD FIN	1		
25	329-547	BRUSH BLOCK	1		
26	999-054	CARBON BRUSH 5X6X11.5 (1 PAIR)	2		
27	319-918	BRUSH CAP	2		
28	313-687	TAPPING SCREW (W/FLANGE) D3X16 (BLACK)	9		
29		NAME PLATE	1		
30	329-589	HOUSING (A).(B) SET	1		
31		HITACHI LABEL	1		
32	329-548	PUSHING BUTTON (A)	1		
33	329-552	LED HOLDER	1		
34	329-550	SWITCH (W/CONTORLLER AND TUBE)	1		
* 35	329-371	BATTERY BCL 1015 (EUROPE, AUS, NZL)	2		
* 35	329-370	BATTERY BCL 1015 (USA, CAN)	2		

STANDARD ACCESSORIES

WH 10DL

ITEM NO.	CODE NO.	DESCRIPTION	NO. USED	REMARKS
501	992-671	+ DRIVER BIT (B) NO.2 50L	1	
502		CHARGER (UC 10SFL)	1	
503	329-553	CASE	1	

OPTIONAL ACCESSORIES

ITEM NO.	CODE NO.	DESCRIPTION	NO. USED	REMARKS
601	321-823	DRILL CHUCK AND ADAPTER SET	1	INCLUD. 616, 618
602	309-922	GREASE FOR IMPACT DRIVER (500G)	1	
603	992-671	+ DRIVER BIT (B) NO.2 50L	1	
604	992-672	+ DRIVER BIT (B) NO.3 50L	1	
605	996-177	NON-MAGNETIC HEX. SOCKET 8MM 65L	1	
606	985-329	NON-MAGNETIC HEX. SOCKET 10MM 65L	1	
607	996-178	NON-MAGNETIC HEX. SOCKET 12MM 65L	1	
608	996-179	NON-MAGNETIC HEX. SOCKET 13MM 65L	1	
609	996-180	NON-MAGNETIC HEX. SOCKET 14MM 65L	1	
610	996-185	NON-MAGNETIC HEX. SOCKET 15MM 65L	1	
611	996-181	NON-MAGNETIC HEX. SOCKET 16MM 65L	1	
612	996-182	NON-MAGNETIC HEX. SOCKET 17MM 65L	1	
613	996-186	NON-MAGNETIC HEX. SOCKET 19MM 65L	1	
614	996-197	HEX. SOCKET (LONG) 21MMX166L	1	
615	996-184	BIT PIECE	1	
616	987-575	CHUCK WRENCH FOR 10VLB-D, 10VLR-D	1	
617	930-119	CHUCK WRENCH 6.5G	1	
618	307-543	CHUCK ADAPTER	1	

ITEM NO.	CODE NO.	DESCRIPTION	NO. USED	REMARKS	