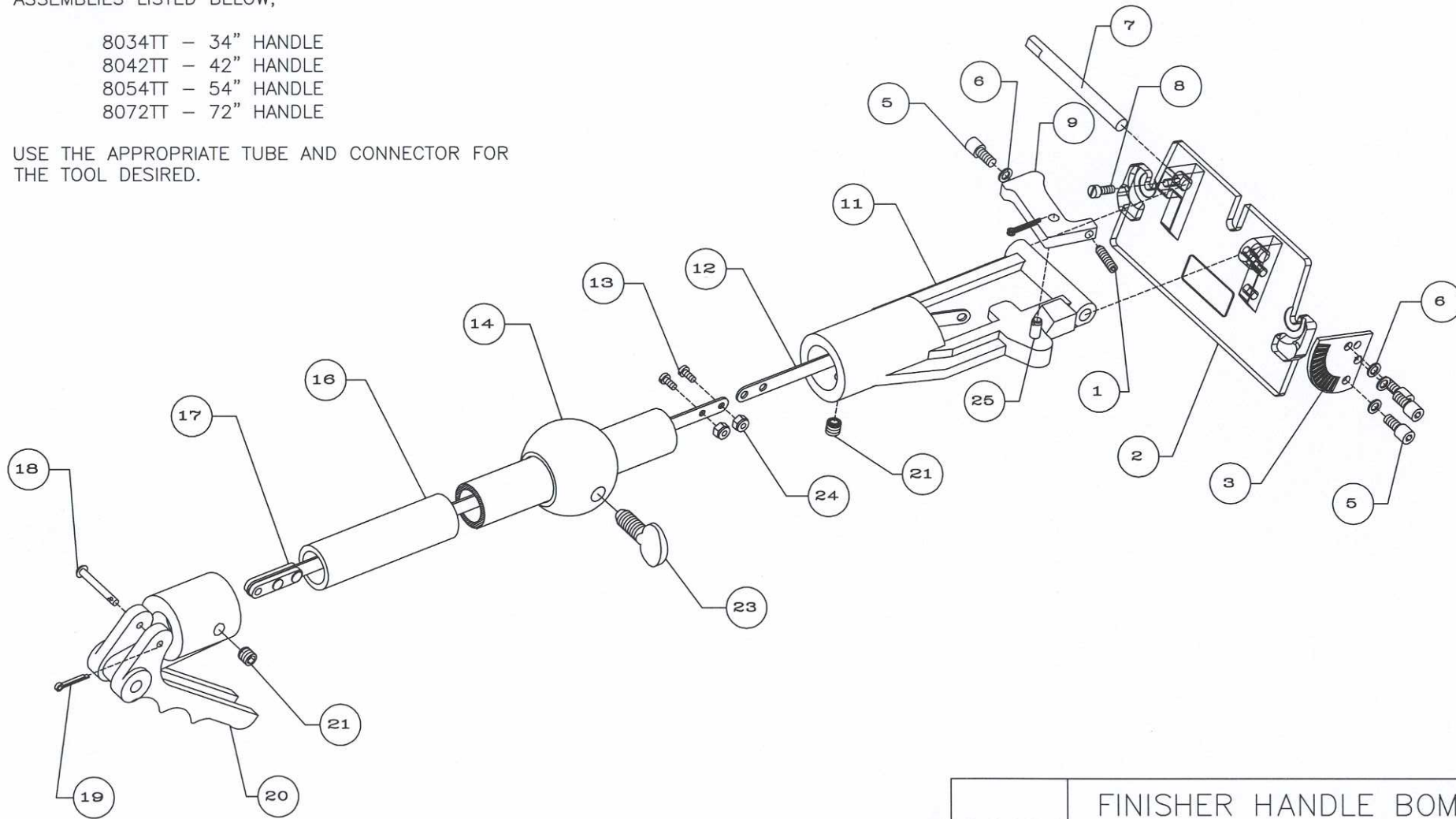


NOTE: THIS DRAWING TO BE USED FOR THE ASSEMBLIES LISTED BELOW,

- 8034TT - 34" HANDLE
- 8042TT - 42" HANDLE
- 8054TT - 54" HANDLE
- 8072TT - 72" HANDLE

USE THE APPROPRIATE TUBE AND CONNECTOR FOR THE TOOL DESIRED.



80XX	FINISHER HANDLE BOMS	
	TopTech® an AWA enterprise	REV D

@ = Part Used in Repair Kit  
 % = Part Used in Sub-Assembly

ITEM#	PART#	QTY REQ'D ON TOOL	TapeTech® Box Handles 8034TT / 8042TT / 8054TT / 8072TT		kits	sub- assemblies
1	809004	1	8-32X5/8 SETSCREW SOCKET CUP PT (REPLACES 809014)			
2	800018F	1	CONNECTOR PLATE			
3	800016	1	QUADRANT			
5	809012	4	8-32X3/8 HEX SOCKET CAP SCREW			
6	809017	4	#8 LOCKWASHER			
7	800021F	1	PIN			
8	059012	1	6-32 X 3/8 FILLISTER SCREW SST			
9	800008	1	PIVOT ARM			
11	808015F	1	HINGE ASSY W/ #			
12	800027	1	SHORT CONNECTOR			
13	059037	2	4-40 X 1/4 BIND HEAD SCREW SST			%
14	702031F	1	HANDLE BALL			
16	800134G	1	34" BOX HANDLE TUBING			
16	800142G	1	42" BOX HANDLE TUBING			
16	800154G	1	54" BOX HANDLE TUBING			
16	800172G	1	72" BOX HANDLE TUBING			
17	804234	1	34" CONNECTOR			
17	804242	1	42" CONNECTOR			
17	804254	1	54" CONNECTOR			
17	804272	1	72" CONNECTOR			
18	809025	1	CLEVIS PIN (REPLACES 809005)			
19	059143	2	1/16X1/2" COTTER PIN SST			
20	804003F	1	GRIP ASSEMBLY			
21	809024	2	1/4-28X1/4 SOCKET SCREW			
23	809011	1	5/16-18/3/4 THUMBSCREW			
24	609012	2	4-40 STOPNUT ELASTIC SST			
25	801009	1	COUPLING PIN (REPAIR ONLY BOX HANDLES)			