



ATD-31170

1/4" X 50' TWIN WELDING HOSE REEL

Instruction Manual

Specifications

- Maximum Working Pressure: 200PSI
- Hose (2) 1/4" ID × 50', Oxygen (Green), Acetylene (Red)
- Oxygen Inlet and Outlet: 9/16" × 18UNF (2B) (Female)
- Acetylene Inlet and Outlet: 9/16" × 18UNFLH (2B) (Female)

Save This Manual

You will need the manual for the safety warnings and precautions, assembly instructions, operating and maintenance procedures, parts list and diagram. Keep your invoice with this manual. Write the invoice number on the inside of the front cover. Keep the manual and invoice in a safe and dry place for future reference.

General Safety Warning and Precautions

WARNING: When using this tool, basic safety precautions should always be followed to reduce the risk of personal injury and damage to equipment.

Read all instructions before using this tool

1. Keep work area clean. Cluttered areas invite injuries.
2. Observe work area conditions. Do not use machines or power tools in damp or wet locations. Don't expose to rain. Keep work area well lighted. Do not use electrically powered tools in the presence of flammable gases or liquids.
3. Keep children away. Children must never be allowed in the work area. Do not let them handle machines, tools, extension cords, or air hoses.
4. Store idle equipment. When not in use, tools must be stored in a dry location to inhibit rust. Always lock up tools and keep out of reach of children.
5. Welding produces arcs that can cause **BURNS** or **BLINDNESS**. Welding produces **TOXIC FUMES** and **GASSES**.

6. Dress properly and use eye, ear, and breathing protection. Always wear ANSI approved impact safety goggles. Wear a welding helmet featuring at least a number 10 shade lens rating. Wear an ANSI approved respirator when welding. Wear leather leggings and fire resistant shoes or boots while welding. Wear dry, insulating gloves and protective clothing. Wear an approved head covering to protect the head and neck. Use aprons, cape, sleeves, shoulder covers, and bibs designed and approved for welding procedures. When welding in confined spaces or overhead, wear flame resistant ear plugs or ear muffs.



7. Use the right tool for the job. Do not attempt to force a small tool or attachment to do the work of a larger industrial tool. There are certain applications for which this tool was designed. It will do the job better and more safely at the rate for which is intended. Do not modify this tool and do not use this tool for a purpose for which it is not intended. Only use this tool with oxygen and acetylene.
8. Do not overreach. Keep proper footing and balance at all times. Do not reach over or across running machines or hoses.
9. Maintain tools with care. Keep tools clean for better and safer performance. Follow instructions for lubricating and changing accessories. Inspect tool cords and air hoses periodically and, if damaged, have them repaired by an authorized technician. The handles must be kept clean, dry, and free from oil and grease at all times.
10. Stay alert. Watch what you are doing, use common sense. Do not operate any tool when you are tired.
11. Check for damaged parts. Before using any tool, any part that appears damaged should be carefully checked to determine that it will operate properly and perform its intended function. Check for gas leaks; alignment and binding of moving parts; any broken parts or mounting fixtures; and any other condition that may affect proper operation. Any part that is damaged should be properly repaired or replaced by a qualified technician.
12. Replacement parts and accessories. When servicing, use only identical replacement parts. Use of any other parts will void the warranty. Only use accessories intended for use with this tool.
13. Do not operate tool if under the influence of alcohol or drugs. Read warning labels if taking prescription medicine to determine if your judgment or reflexes are impaired while taking drugs. If there is any doubt, do not operate the Hose Reel.
14. Maintenance and Repair. This Hose Reel has gas-tight parts and a powerful spring. Unskilled repair may make the reel hazardous or result in an accident causing severe injury or death. For your safety, maintenance and repairs should be performed regularly only by a qualified technician.
15. Industrial applications must follow OSHA guidelines.
16. **WARNING:** The warnings, cautions, and instructions discussed in this instruction manual cannot cover all possible conditions and situations that may occur. It must be understood by the operator that common sense and caution are factors which cannot be built into this product, but must be supplied by the operator.

Hose Reel Specific Safety Warnings

1. Read all of the instructions and safety warnings provided with your welding tanks, cutting torch, and given by the acetylene/oxygen distributor prior to operation. Also, read all of the instructions and safety precautions as outlined in the manufacture's manual for the material you will weld or cut.

2. Risk of fire and/or Explosion

Warning! Leaking Acetylene and Oxygen are extremely hazardous and may result in explosion and fire resulting in SERIOUS INJURY and DEATH.

- Turn off gas supply when not in use.
- Working pressure on the acetylene regulator should NEVER be set above 15PSI.
- Always use reverse flow check valves on the torch and regulator.
This greatly reduces the possibility of mixing gases in the regulator or hose.
- Don't direct the gas flame near the Hose, Hose Reel, or Tanks.
- Use regulators for both oxygen and acetylene. Connect oxygen and acetylene intake hoses correctly, following the manufacturer's safety guidelines. Make sure the incoming pressure does not exceed the maximum operating pressure of 200PSI.
- Locate the Hose Reel in a well ventilated area.



- Check for leakage periodically. If any leakage is found, immediately shut down and purge the system. Have the equipment repaired or replaced by an authorized service technician.
- When installing or replacing O-ring seals, only use silicon as a lubricant. Do not allow any grease or oil on or in the connections or hoses. These materials ignite and easily burn in the presence of oxygen.
- Secure cylinders to a car, wall, or post to prevent them from falling. All cylinders should be stored in an upright position. Never strike or drop a cylinder. Do not use dented cylinders. Cylinder caps should be used when moving or storing a cylinder.



3. Avoid overexposure to fumes and gasses. Work in a ventilated area and do not breathe fumes. Use mechanical ventilation systems to improve air quality. Always use an approved respirator.



4. When working with cylinders, always “crack” the cylinder valves by standing to one side and quickly opening and closing the valve, allowing gas to escape, clearing the valve of any foreign material. **If oil or grease is found, discontinue using the cylinder and immediately contact your supplier.**
5. When attaching **GREEN** oxygen regulators (not included) to the oxygen cylinder, or **RED** acetylene regulators (not included) to the acetylene cylinder, make sure they are tightened in the correct directions (normally, clockwise for oxygen and counterclockwise for acetylene).

Unpacking

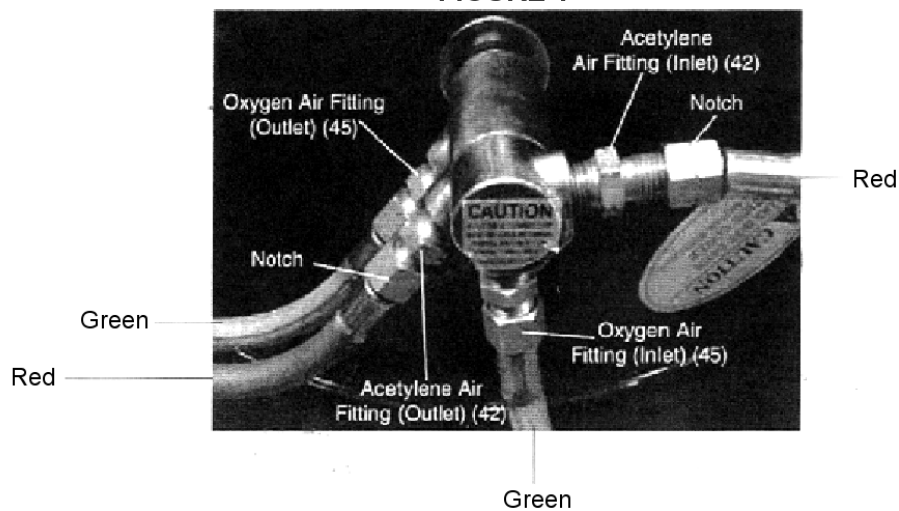
When unpacking, check to make sure you have all the parts listed on the following page.

Warning: When connecting, make sure you connect RED acetylene hoses with notches (left-handed threads), to the connections with notches (left-handed threads). Connect the GREEN oxygen hoses without notches to the connections without notches. See **FIGURE 1**.

BE SURE TO USE TEFLON (PTFE) TAPE ON ALL FITTINGS. THIS TAPE IS SUPPLIED WITH THE UNIT. FAILURE TO USE THIS TAPE WILL RESULT IN GAS LEAKS AND POTENTIAL EXPLOSIONS, FIRES, AND HEALTH PROBLEMS UP TO AND INCLUDING DEATH.

OPERATION

FIGURE 1



Installation

See **FIGURE 2** and the Assembly Drawing on the last page.

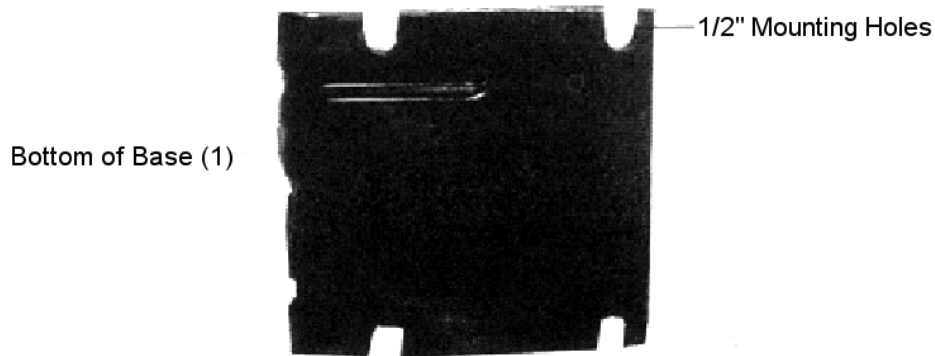
Note: For ceiling mounting, mount the Hose Reel high enough above the floor to avoid contact with people and equipment.

1. Before attaching the Base(#1) to a wall or ceiling, make sure the mounting surface is capable of supporting the weight of the Hose Reel and hose, and can withstand the stress of pulling and retracting the hose.
2. The Support Plate (#2) may be adjusted so that the Hoses (#47) leave the Reels on either side.
To change its position:
 - a) Pull out some hose and let the reel latch (click and stop).
 - b) Remove the Bolts (#12) that hold the Support Plate (#2) in place.
 - c) Rotate the Support Plate (#2) into the correct position. Replace the Bolts (#12) and tighten.

Warning: Before attempting any drilling into walls or ceilings, make certain no electrical wires are in the way or behind the surface you are drilling into.

Make sure the mounting surface is solid. If going through sheet rock, it must have studs for the bolts to penetrate. Draw a rectangular template with 1/2" holes on center with a length of 6-1/4" and a width of 7-1/8". Before drilling match your template with the holes on the Base (#1). Pre-drill the holes. Secure the Base (#1) to the mounting surface with four 1/2" lag bolts (not included). Refer to **FIGURE 2**.

FIGURE 2



When mounting on a wall, position these open holes on the lower side (closest to the ground)

Operating the Hose Reel

1. Slowly pull out the Dual-Hose (#47). You will hear a clicking noise.
2. To latch or lock the Dual-Hose in place, pull it out at least 2 clicks, and then slowly allow it to retract to the previous click.
3. To unlatch or unlock the Dual-Hose, slowly pull the Dual-Hose until the clicking noise stops completely, then allow it to slowly and completely retract into the Hose Reel.

NEVER retract the Dual-Hose while the gas is on or the torch is lit.

NEVER allow the Dual-Hose to retract quickly and without restraining the recoil speed.

NEVER let go of the end of the Dual-Hose when it is rewinding.

Maintenance

Warning - Always shut off and disconnect the gas tanks and regulators, and purge all gases from the system before attempting any maintenance.

Note: Always wear ANSI approved safety goggles during maintenance and make sure the Hose Reel is not connected to the acetylene tank and/or oxygen tanks.

Adjusting Spring Tension

1. Pull out 6 feet of Hose (#47) and allow the Drum (#27, #28) to latch.
2. Remove the Bumper Blocks (#48) by taking out the Screws (#49) and Nuts (#50).
3. Feed the Dual-Hose back through the Support Plate (#2).
4. To increase Hose tension, wrap the pulled Hose one time around the Drum (#27, #28). To decrease tension, unwrap the Hose one wrap from the Drum (#27, #28).
5. Reinsert the Dual-Hose through the Support Plate (#2) and reinstall the Bumper Blocks (#48) by replacing the Screw (#49) and Nuts (#50).
6. Check the tension by pulling out the Dual-Hose and releasing it.
7. If necessary, reposition the Bumper Blocks (#48) by taking out the Screws (#49) and Nuts (#50), changing their position, and replacing the Screws (#49) and Nuts (#50).

Hose Replacement

See the Assembly Drawing on the last page.

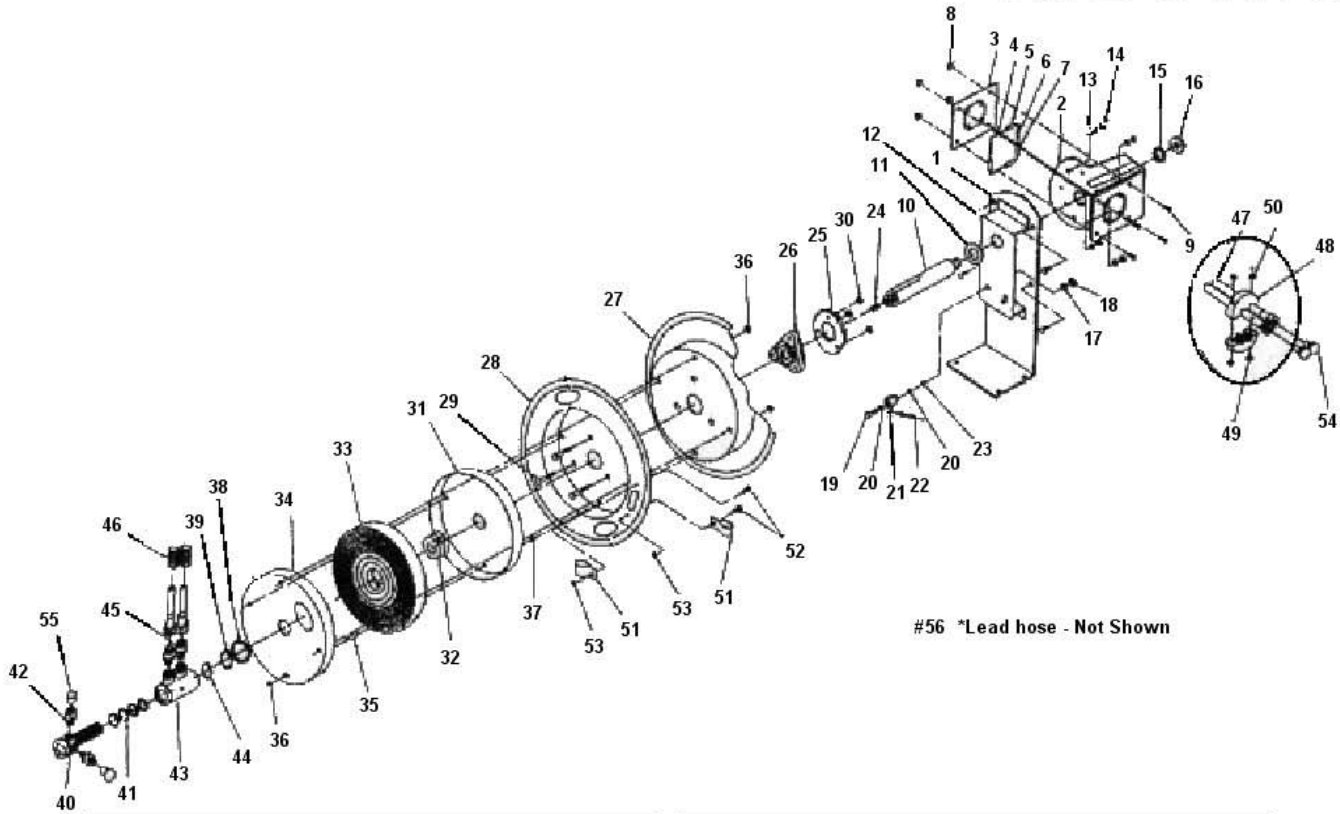
Warning: Replace the Dual-Hose only with hoses intended for oxygen and acetylene welding:

BE SURE TO USE TEFLON (PTFE) TAPE ON ALL FITTINGS. THIS TAPE IS SUPPLIED WITH THE UNIT. FAILURE TO USE THIS TAPE WILL RESULT IN GAS LEAKS AND POTENTIAL EXPLOSIONS, FIRES, AND HEALTH PROBLEMS UP TO AND INCLUDING DEATH.

1. Remove the Support Plate (#2) by removing the Bolts (#12).
2. Pull the Dual-Hose (#47) out to the final latched position. Make sure it is securely locked and cannot rotate back.
3. Remove the Clamp (#51) that attaches the Dual-Hose to the Drum (#28). Detach the Dual-Hose from the outlets (See **FIGURE 1**). Remove both Hose Protection Springs (#46).
4. Remove the old hose and remove the Bumper Blocks (#48), as explained above.
5. Feed the new hose through the guide on the Support Plate (#2) and the cut out on the Drum (#27, #28) flange. Replace the Hose Protection Springs (#46) and connect the hose to the outlets. Make sure to apply thread sealant or tape (not include) to the outlets threads. Reinstall the Clamp (#51) and Bumper Blocks (#48).
6. **Carefully and slowly**, release the Drum by **gently** pulling then releasing the locking ratchet. Then, **slowly** allow the Dual-Hose to retract onto the reel.

Note: If the Spring Canister needs repair or replacement, take the unit to an authorized service technician.

ATD-31170



#56 *Lead hose - Not Shown

ITEM#	ORDERING PART#	PART DESCRIPTION
1	PRT31170-01	BASE
2	PRT31170-02	SUPPORT PLATE
3	PRT31170-03-07	GUIDE BRACKET ASSY
4	PRT31170-03-07	GUIDE BRACKET ASSY
5	PRT31170-03-07	GUIDE BRACKET ASSY
6	PRT31170-03-07	GUIDE BRACKET ASSY
7	PRT31170-03-07	GUIDE BRACKET ASSY
8	PRT31170-08	NUT
9	PRT31170-09	SCREW
10	PRT31170-10	SHAFT
11	PRT31170-11	WASHER
12	PRT31170-12	BOLT
13	PRT31170-13	WASHER
14	PRT31170-14	NUT
15	PRT31170-15	RETAINER
16	PRT31170-16	NUT
17	PRT31170-17	WASHER
18	PRT31170-18	NUT
19	PRT31170-19	BOLT
20	PRT31170-20	WASHER
21	PRT31170-21	LOCKING ARM
22	PRT31170-22	SPRING DOG
23	PRT31170-23	RETAINER
24	PRT31170-24	SCREW
25	PRT31170-25	LOCKING RING
26	PRT31170-26	ASSY.HUB BEARING
27	PRT31170-27	DRUM
28	PRT31170-28	DRUM

ITEM#	ORDERING PART#	PART DESCRIPTION
29	PRT31170-29	BOLT
30	PRT31170-30	NUT
31	PRT31170-31	SPRING DRUM
32	PRT31170-32	SPRING CORE
33	PRT31170-33	SPRING
34	PRT31170-34	SPRING DRUM
35	PRT31170-35	BOLT
36	PRT31170-36	NUT
37	PRT31170-37	NUT
38	PRT31170-38	WASHER
39	PRT31170-39	RETAINER
40	PRT31170-40-45	SWIVEL SPOOL ASSY
41	PRT31170-40-45	SWIVEL SPOOL ASSY
42	PRT31170-40-45	SWIVEL SPOOL ASSY
43	PRT31170-40-45	SWIVEL SPOOL ASSY
44	PRT31170-44	RETAINER
45	PRT31170-40-45	SWIVEL SPOOL ASSY
46	PRT31170-46	HOSE PROTECTION SPRING
47	PRT31170-47	DUAL-HOSE
48	PRT31170-48	HOSE STOP
49	PRT31170-49	SCREW
50	PRT31170-50	NUT
51	PRT31170-51	CLAMP
52	PRT31170-52	SCREW
53	PRT31170-53	NUT
54	PRT31170-54	COVER
55	PRT31170-55	COVER
56	PRT31170-56	LEAD HOSE

Please Read the Following Carefully

The manufacturer and/or distributor have provided the parts diagram in this manual as a reference tool only. Neither the manufacturer nor distributor makes any representation or warranty of any kind to the buyer that he or she is qualified to make any repairs to the product or that he or she is qualified to replace any parts of the product. In fact, the manufacturer and/or distributor expressly states that all repairs and parts replacements should be undertaken by certified and licensed technician and not by the buyer. The buyer assumes all risk and liability arising out of his or her repairs to the original product or replacement parts, or arising out of his or her installation of replacement parts.

BE SURE TO USE TEFLON (PTFE) TAPE ON ALL FITTINGS. THIS TAPE IS SUPPLIED WITH THE UNIT. FAILURE TO USE THIS TAPE WILL RESULT IN GAS LEAKS AND POTENTIAL EXPLOSIONS, FIRES, AND HEALTH PROBLEMS UP TO AND INCLUDING DEATH.

The warnings, cautions, and instructions discussed in this instruction manual cannot cover all possible conditions and situations that may occur. It must be understood by the operator that common sense and caution are factors which cannot be built into this product, but must be supplied by the operator.