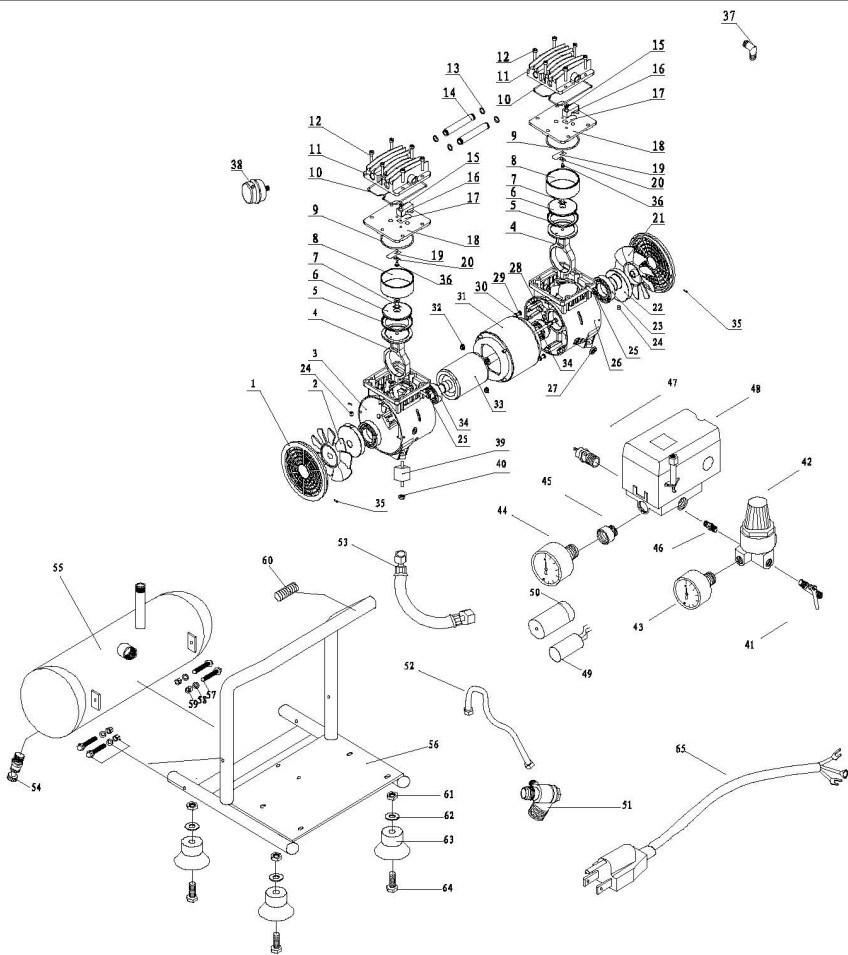


2-1-SIL-AL



- | | | | | |
|--------------------|--------------------|---------------------|--------------------|----------------|
| 01 covery | 16 limited block | 31 stator | 46 connect | 61 nut |
| 02 left fan | 17 valve | 32 nut | 47 safety valve | 62 gasket |
| 03 left crankcase | 18 valve plate | 33 rotator | 48 pressure switch | 63 rubber foot |
| 04 connecting rod | 19 valve | 34 bearing 6203 | 49 capacitor | 64 bolt |
| 05 piston cup | 20 washer | 35 bolt | 50 capacitor cover | 65 plug |
| 06 binder plate | 21 right fan | 36 bolt | 51 check valve | |
| 07 bolt | 22 shaft seal | 37 elbow | 52 unloading tube | |
| 08 cylinder | 23 bearing 6006 | 38 air filter | 53 pipe | |
| 09 obturating ring | 24 bolt | 39 vibration colnmn | 54 drain valve | |
| 10 obturating ring | 25 bolt | 40 nut | 55 tank | |
| 11 cylinder head | 26 right cankcase | 41 deflation valve | 56 pumps.1t stents | |
| 12 bolt | 27 protection ring | 42 regulator | 57 bolt | |
| 13 obturating ring | 28 bolt | 43 40 gauge | 58 gasket | |
| 14 connecting pipe | 29 bolt | 44 50 gauge | 59 nut | |
| 15 bolt | 30 spring | 45 connect | 60 handle sleeve | |