

BOSCH

January 2000
INDUSTRIAL

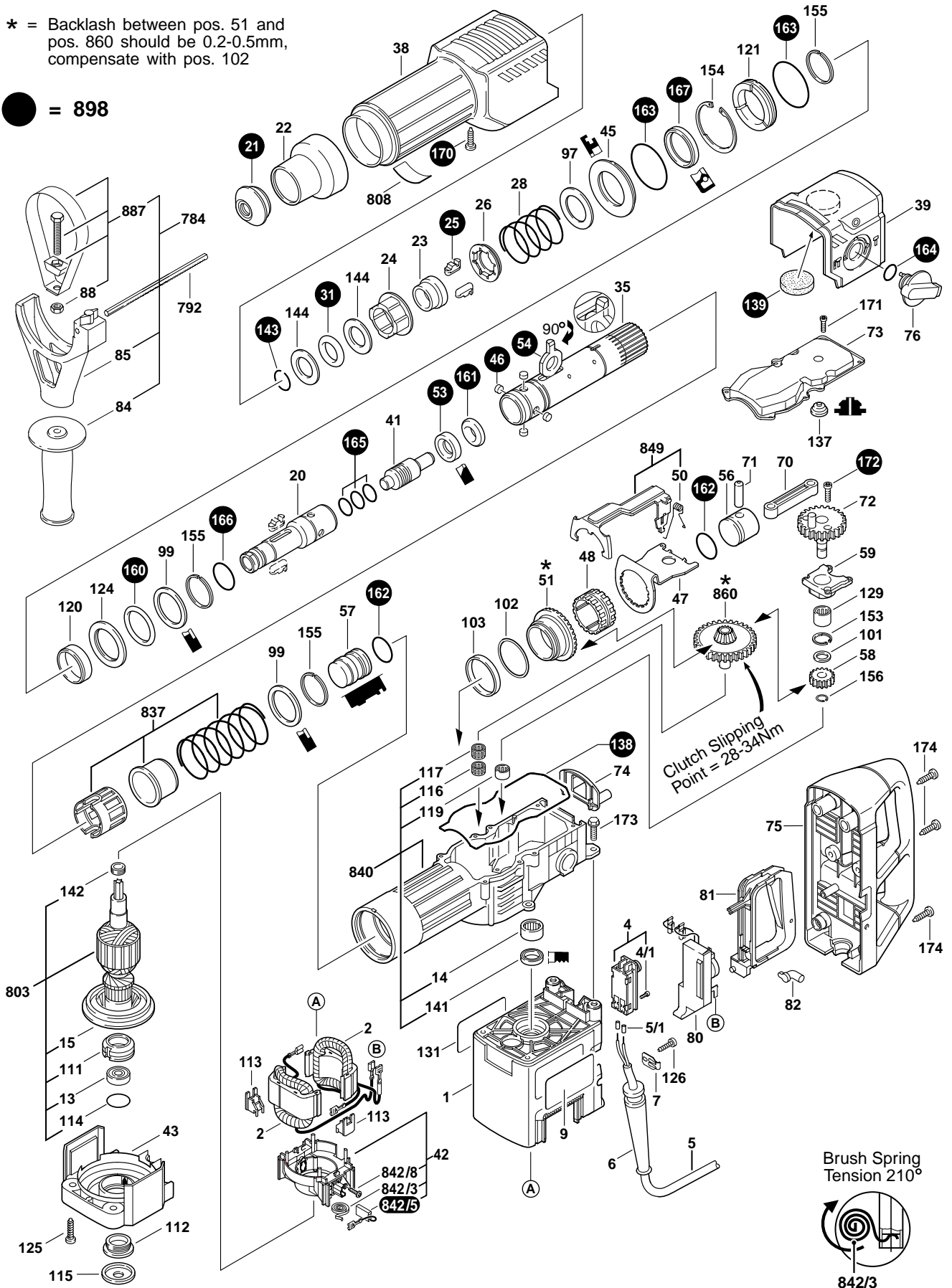
ROTARY HAMMER

Model 0611245739

11245EVS

* = Backlash between pos. 51 and pos. 860 should be 0.2-0.5mm, compensate with pos. 102

● = 898



11245EVS ROTARY HAMMER

Pos.	Part Number	Description {Qty.}	F/C	Pos.	Part Number	Description {Qty.}	F/C
1	1 615 108 091	Motor Housing	71	111	3 610 501 500	Threaded Bushing	82
2	1 614 220 125	Field 120V	22	112	3 613 461 500	Threaded Ring	85
4	1 617 200 048	Switch On/Off	15	113	1 610 009 007	Spacer {2}	82
4/1	2 910 011 088	Screw {2}	89	114	1 900 210 130	O-Ring	78
5	1 604 460 092	Cord 120V 14/2	11	115	1 610 508 027	Cap	9
5/1	1 900 452 003	Terminal Sleeve {2}	10	116	1 610 913 004	Needle Bearing	56
6	1 600 703 010	Strain Relief	11	117	1 610 913 011	Needle Bearing	56
7	1 601 302 018	Cord Clamp	89	119	1 610 910 081	Needle Bearing	56
9	1 611 110 894	Label "11245EVS"	9	120	1 610 290 037	Bushing	82
13	2 610 909 310	Ball Bearing	60	121	1 610 290 035	Sleeve	82
14	1 610 910 089	Needle Bearing	61	124	1 610 190 029	Thrust Washer	65
15	1 616 610 083	Fan	23	125	2 910 611 047	Screw {4}	89
20	1 618 597 068	Drill Holder	83	126	2 910 611 019	Screw	89
21	1 610 508 023	Dust Shield	92	129	1 610 910 085	Needle Bearing	56
22	1 610 591 014	Sleeve	92	131	2 610 994 183	Label "Caution"	9
23	1 610 520 001	Stop Sleeve	86	137	1 610 591 015	Plug	9
24	1 610 590 006	Locking Sleeve	86	138	1 611 015 043	Gasket	79
25	1 612 300 027	Locking Cog {2}	86	139	1 610 290 036	Felt	77
26	1 610 290 025	Locking Ratchet	86	141	1 610 290 028	Seal	77
28	1 614 621 000	Spring	86	142	3 613 344 500	Grease Slinger	82
31	1 610 290 030	O-Ring	78	143	1 614 601 021	Spring Ring	89
35	1 615 806 113	Guide Tube	43	144	1 610 190 028	Support Disc {2}	65
38	1 615 190 094	Plastic Sleeve	70	153	2 916 660 007	Retaining Ring	89
39	1 615 190 096	Cover	70	154	2 916 660 040	Retaining Ring	89
41	1 613 124 046	Impact Bolt	45	155	1 614 601 020	Spring Ring {3}	89
42	1 614 336 036	Brush Holder Assembly w/pos. 842/3 - 842/8	25	156	2 916 650 003	Retainer Ring	89
43	1 615 808 083	Motor Housing Cover	70	160	1 610 210 132	O-Ring	78
45	1 610 290 032	Ring	65	161	1 610 290 031	O-Ring	78
46	1 613 200 009	Pin {4}	66	162	1 610 210 133	O-Ring {2}	44
47	1 611 329 016	Plate	62	163	1 610 210 134	O-Ring {2}	78
48	1 616 334 011	Gear Sleeve	82	164	1 900 210 117	O-Ring	78
50	1 614 651 016	Spring	27	165	1 610 210 096	O-Ring {3}	78
51	1 616 333 031	Gear	33	166	1 610 210 084	O-Ring	78
53	1 610 190 026	Stop Disc	65	167	1 610 283 026	Seal	77
54	1 610 190 024	Control Disc	65	170	2 914 551 117	Screw	89
56	1 618 700 066	Piston	47	171	2 910 141 158	Screw {8}	89
57	1 618 710 066	Striker	44	172	1 613 414 014	Screw {4}	89
58	1 616 317 049	Intermediate Gear	31	173	2 914 541 008	Screw {4}	89
59	1 615 805 065	Bearing Flange	38	174	2 910 211 247	Screw {6}	89
70	1 612 001 034	Connecting Rod	57	784	2 602 025 086	Auxiliary Handle Assy. w/pos. 84, 85, 88, 887	9
71	1 613 100 020	Wrist Pin	47	792	1 613 001 008	Depth Gauge	87
72	1 616 317 050	Eccentric Gear	34	803	1 614 011 074	Armature w/Fan 120V w/pos. 13,15,111,114,142	AW
73	1 615 500 291	Housing Cover	70	808	1 601 106 999	Nameplate	9
74	1 612 386 004	Bracket	9	837	1 617 000 294	Control Bushing Assembly	82
75	1 615 132 083	Handle	74	840	1 617 000 992	Impact Housing Assembly w/pos. 14,116,117,119,141	73
76	1 612 026 057	Selector Knob	64	842/3	1 614 652 004	Brush Spring {2}	27
80	1 617 233 027	Speed Control	17	842/5	1 617 014 126	Brush Set	26
81	1 612 026 084	Switch Handle	74	842/8	2 910 611 012	Screw {2}	89
82	1 615 510 000	Light Conductor	9	849	1 617 000 991	Fork/Spring Assembly w/pos. 50	63
84	1 612 025 029	Auxiliary Handle	9	860	1 617 000 993	Clutch Assembly	46
85	1 618 040 059	Clamp Holder	80	887	1 617 000 807	Clamp Assembly 87mm w/pos. 88	80
88	2 915 061 005	Nut	89	898	1 617 000 225	Service Pack w/Grease	1
97	1 610 102 032	Washer	65				
99	1 610 114 020	Support Disc {2}	65				
101	1 610 190 027	Washer	65				
* 102	1 610 102 036	Shim	65				
103	1 610 290 034	Bushing	82				