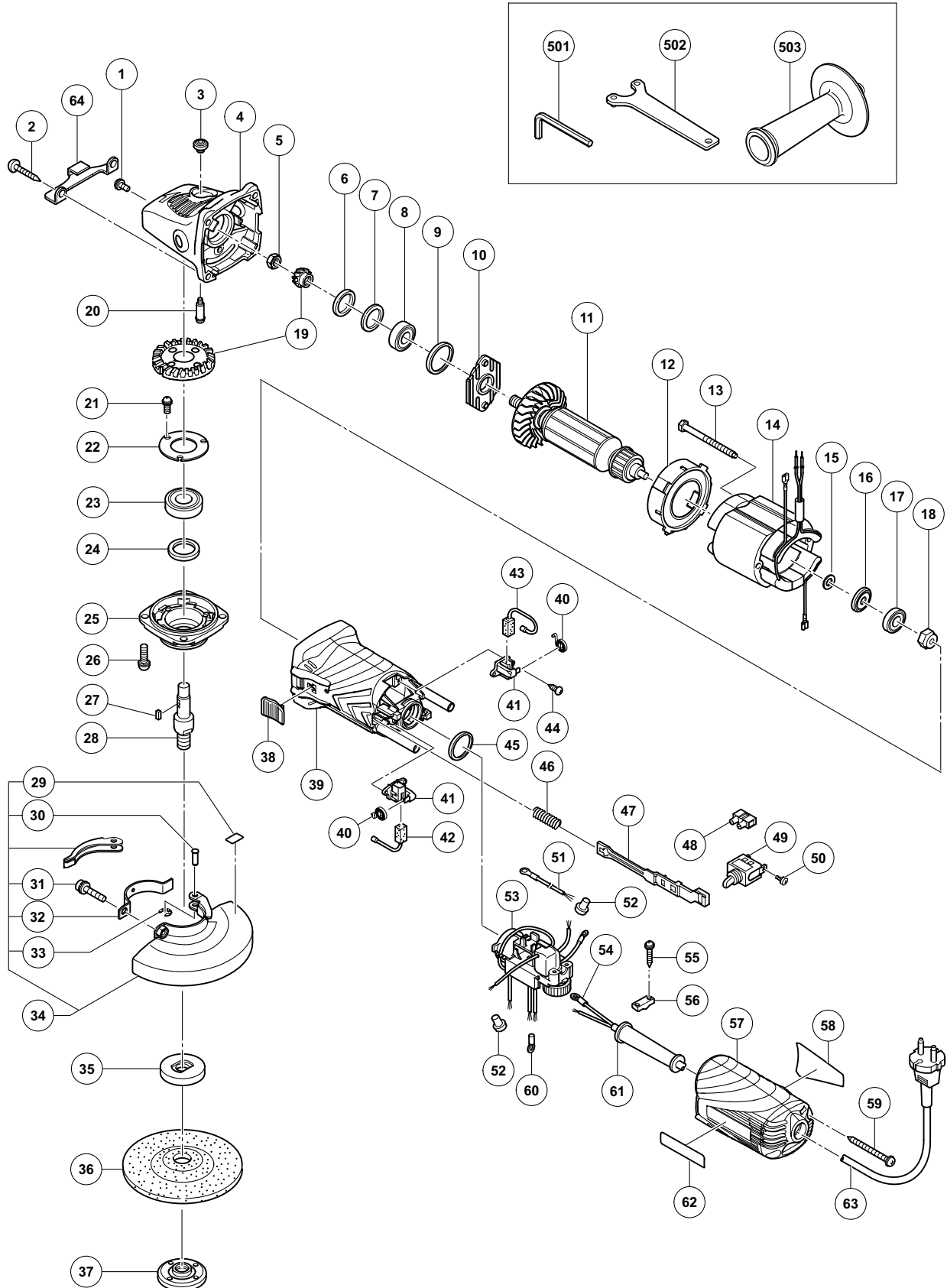


ELECTRIC TOOL PARTS LIST

■ DISC GRINDER
Model G 12VA

2009·8·28
(E1)



PARTS

G 12VA

ITEM NO.	CODE NO.	DESCRIPTION	NO. USED	REMARKS
1	303-255	SEAL LOCK SCREW (W/SP. WASHER) M4 X 10	2	
2	320-523	TAPPING SCREW D5 X 25 (BLACK)	4	
3	301-944	PUSHING BUTTON	1	
4	321-737	GEAR COVER ASS'Y	1	INCLUD. 3, 20
5	949-558	NUT M8 (10 PCS.)	1	
6	308-543	SEAL RING (A)	1	
7	980-866	WASHER (C)	1	
8	629-T12	BALL BEARING 629T12DDC3PS2-L	1	
9	957-754	RUBBER RING	1	
10	321-734	BEARING COVER	1	
* 11	360-869U	ARMATURE ASS'Y 120V	1	INCLUD. 8, 15-17
* 11	360-869E	ARMATURE 230V-240V	1	
12	321-732	FAN GUIDE	1	
13	982-021	HEX. HD. TAPPING SCREW D4 X 70	2	
* 14	340-749D	STATOR 120V-127V	1	
* 14	340-749E	STATOR ASS'Y 220V-240V	1	
15	311-737	THRUST WASHER	1	
16	311-435	DUST SEAL (A)	1	
17	608-VVM	BALL BEARING 608VVC2PS2L	1	
18	325-475	MAGNET	1	
19	329-054	GEAR AND PINION SET	1	
20	301-943	LOCK PIN	1	
21	991-207	SEAL LOCK SCREW (W/SP. WASHER) M4 X 8	3	
22	936-680	BEARING COVER (B)	1	
23	620-1DD	BALL BEARING 6201DDCMPS2L	1	
24	308-546	FELT PACKING	1	
25	308-545	PACKING GLAND	1	
26	307-046	SEAL LOCK SCREW (W/SP. WASHER) M5 X 16	4	
27	944-109	FEATHER KEY 3 X 3 X 8	1	
* 28	994-301	SPINDLE (A)	1	
* 28	994-302	SPINDLE (B)	1	FOR USA, CAN, MEX
29	311-492	LABEL	1	
30	311-744	SET PIN	1	
31	316-107	HEX. SOCKET HD. BOLT (W/WASHERS) M5 X 20	1	
32	311-491	SET PIECE (B)	1	
33	874-759	RETAINING RING (E-TYPE) FOR D2.5 SHAFT	1	
34	311-745	WHEEL GUARD ASS'Y (TOOLLESS TYPE)	1	INCLUD. 29-33
* 35	937-817Z	WHEEL WASHER	1	
* 35	937-928Z	WHEEL WASHER (A) FOR D16 HOLE	1	FOR USA, CAN, MEX
36	316-821	D. C. WHEELS 115MM A36Q (25 PCS.)	1	
* 37	994-324	WHEEL NUT M14	1	
* 37	937-923P	WHEEL NUT 5/8"-11UNC	1	FOR USA, CAN, MEX
38	330-810	SLIDE SWITCH KNOB	1	
39	330-808	HOUSING	1	
40	308-536	SPRING	2	
41	308-535	BRUSH HOLDER	2	
42	999-088	CARBON BRUSH (1 PAIR)	1	
43	999-076	CARBON BRUSH (AUTO STOP TYPE) (1 PAIR)	1	
44	306-945	TAPPING SCREW D3 X 10	4	
45	995-662	RUBBER RING	1	

