

MK-SDG-7

OWNER'S MANUAL, PARTS LIST & EXPLODED VIEW



Revision 106	06.2013
Manual Part# 168146	

Caution: Read all safety and operating instructions before using this equipment. This manual **MUST** accompany the equipment at all times.

INTRODUCTION

Congratulations on your purchase of a MK-SDG-7. We are certain that you will be pleased with your purchase. MK Diamond takes pride in producing the finest construction power tools and diamond blades in the industry.

Operated correctly, your MK-SDG-7 should provide you with years of service. In order to help you, we have included this manual. This owners manual contains information necessary to operate and maintain your MK-SDG-7 safely and correctly. Please take the time to familiarize yourself with the MK-SDG-7 by reading and reviewing this manual.

Read and follow all safety, operating and maintenance instructions.

If you should have questions concerning your MK-SDG-7, please feel free to call our friendly customer service department at: 800 421-5830

Regards,

MK Diamond

NOTE THIS INFORMATION FOR FUTURE USE:

MODEL NUMBER:	
SERIAL NUMBER:	
PURCHASE PLACE:	
PURCHASE DATE:	

NOTE: For your (1) one year warranty to be effective, complete the warranty card and mail it in as soon as possible.

TABLE OF CONTENTS

SAFETY

Safety Messages	4
Safety Precaution	4-6
California Proposition 65 Message	7
General Safety	8
Electrical Requirements and Grounding Requirements	9-10
Safety Label Locations	11
Product Specifications and Features	12

ASSEMBLY

Assembly	13
Replace Cup Wheel	13
Operation	14

EXPLODED VIEW and PART LISTS

Exploded View & Parts List	16-18
----------------------------	-------

ACCESSORIES ORDERING and RETURN INSTRUCTIONS


Accessories	20
Ordering Information	22
Return Material Policy	22
Packaging Instructions	22
Authorized Service Centers	22

CONTACT & LIMITED WARRANTY

Contact	23
Limited Warranty	23

Read and follow all safety, operating and maintenance instructions. Failure to read and follow these instructions could result in injury or death to you or others. Failure to read and follow these instructions could also result in damage and/or reduced equipment life.

SAFETY MESSAGES

A safety message alerts you to potential hazards that could hurt you or others. Each safety message is preceded by a safety alert symbol () and one of three words: **DANGER**, **WARNING**, or **CAUTION**.



DANGER You **WILL** be **KILLED** or **SERIOUSLY INJURED** if you do not follow directions.



WARNING You **CAN** be **KILLED** or **SERIOUSLY INJURED** if you do not follow directions.



CAUTION You **CAN** be **INJURED** if you do not follow directions. It may also be used to alert against unsafe practices.

DAMAGE PREVENTION AND INFORMATION MESSAGES

A Damage Prevention Message is to inform the user of important information and/or instructions that could lead to equipment or other property damage if not followed. Information Messages convey information that pertains to the equipment being used. Each message will be preceded by the word **NOTE**, as in the example below.

NOTE: Equipment and/or property damage may result if these instructions are not followed.

GENERAL SAFETY PRECAUTIONS AND HAZARD SYMBOLS

In order to prevent injury, the following safety precautions and symbols should be followed at all times!

SAFETY PRECAUTIONS



ALWAYS read the Owner's Manual before operating the machine.



ALWAYS keep the Shroud in place.



REMOVE ADJUSTING KEYS AND WRENCHES

Form a habit of checking to see that keys and adjusting wrenches are removed from the power tool before it is turned on.



KEEP WORK AREA CLEAN

Cluttered work areas and benches invite accidents.



DO NOT USE IN DANGEROUS PLACES

DO NOT use power tools in damp or wet locations nor expose them to rain. Always keep the work area well lighted.



KEEP CHILDREN AWAY

All visitors and children should be kept a safe distance from work area.

**MAKE THE WORKSHOP KID PROOF**

Make the workshops kid proof by using padlocks, master switches or by removing starter keys.

**DO NOT FORCE THE TOOL**

A power tool will do a job better and safer operating at the rate for which it was designed.

**USE THE RIGHT TOOL**

DO NOT force a tool or an attachment, to do a job that it was not designed to do.

**USE THE PROPER EXTENSION CORD**

If using an extension cord make sure it is in good condition first. When using an extension cord, be sure to use one heavy enough to carry the current your product will draw. An undersized cord will cause a drop in line voltage that will result in a loss of power and overheating. TABLE 1, Page 10 shows the correct AWG size to use depending on cord length and nameplate ampere rating. If in doubt, use the next heavier gage. The smaller the gage number, the heavier the cord.

USE PROPER APPAREL

DO NOT wear loose clothing, gloves, neckties, rings, bracelets, or other jewelry that may be caught in moving parts. Non-slip footwear is recommended. Wear protective hair covering to contain long hair.



ALWAYS wear approved eye protection.



ALWAYS wear approved respiratory protection.



ALWAYS use hearing protection.

**SECURE WORK**

Clamps or a vise should be used to hold work whenever practical. Keeping your hands free to operate a power tool is safer.

**DO NOT OVERREACH**

Keep proper footing and balance at all times by not overreaching.

**MAINTAIN TOOLS WITH CARE**

Keep tools clean for the best and safest performance. Always follow maintenance instructions for lubricating, and when changing accessories.

**DISCONNECT TOOLS**

Power tools should always be disconnected before servicing or when changing accessories, such as blades, bits, cutters, and the like.



ALWAYS place the power ON/OFF switch in the **OFF** position when the saw is not in use.

**USE RECOMMENDED ACCESSORIES**

Consult the owner's manual for recommended accessories. Using improper accessories may increase the risk of personal or by-stander injury.

**NEVER STAND ON THE TOOL**

Serious injury could occur if a power tool is tipped, or if a cutting tool is unintentionally contacted.

**CHECK FOR DAMAGED PARTS**

Before using a power tool, check for damaged part. A guard or any other part that is damaged should be carefully checked to determine if would operate properly and perform its intended function. Always check moving parts for proper alignment or binding. Check for broken parts and mountings and all other conditions that may affect the operation of the power tool. A guard, or any damaged part, should be properly repaired or replaced.

**NEVER LEAVE A TOOL UNATTENDED**

TURN POWER OFF - Do not leave a tool until it comes to a complete stop. Always turn a power tool OFF when leaving the work area, or, when a cut is finished.

**ELECTRICAL SHOCK**

NEVER touch electrical wires or components while the engine is running. They can be sources of electrical shock which could cause severe injury or burns.

**ROTATING PARTS**

Keep hands, feet, hair, and clothing away from all moving parts to prevent injury. Never operate the motor with covers, shrouds, or guards removed.

**OVER SPEED**

NEVER tamper with the governor components or settings to increase the maximum speed. Severe personal injury and damage to the engine or equipment can result if operated at speeds above maximum.

**DO NOT EXPOSE TO RAIN**

DO NOT expose to rain or use in damp locations.

SILICA DUST WARNING

Grinding/cutting/drilling of masonry, concrete, metal and other materials with silica in their composition may give off dust or mists containing crystalline silica. Silica is a basic component of sand, quartz, brick clay, granite and numerous other minerals and rocks. Repeated and/or substantial inhalation of airborne crystalline silica can cause serious or fatal respiratory diseases, including silicosis. In addition, California and some other authorities have listed respirable crystalline silica as a substance known to cause cancer. When cutting such materials, always follow respiratory precautions.

Use appropriate NIOSH-approved respiratory protection where dust hazard may occur. Paper masks or surgical masks without a NIOSH approval number are not recommended because they do little to protect the worker. For more information about respirator programs, including what respirators have received NIOSH approval as safe and effective, please visit the NIOSH website at:

<http://www.cdc.gov/niosh/topics/respirators>

Observe OSHA regulations for respirator use (29 C.F.R. §1910.134 and §1503.1).

Visit <http://www.osha.gov> for more information.

CALIFORNIA PROPOSITION 65 MESSAGE

Some dust created by power sanding, sawing, grinding, drilling, and other construction activities contain chemicals known (to the State of California) to cause cancer, birth defects or other reproductive harm. Some examples of these chemicals are:

- Lead, from lead-based paints
- Crystalline silica from bricks, cement and other masonry products
- Arsenic and chromium, from chemically treated lumber

For further information, consult the following sources:

<http://www.osha.gov/dsg/topics/silicacrystalline/index.html>

<http://www.cdc.gov/niosh/docs/96-112/>

<http://oehha.ca.gov/prop65/law/P65law72003.html>

<http://www.dir.ca.gov/Title8/sub4.html>

Your risk from these exposures varies depending on how often you do this type of work. To reduce your exposure to these chemicals, work in a well-ventilated area, and work with approved safety equipment, such as dust masks that are specially designed to filter out microscopic particles. Where use of a dust extraction device is possible, it should be used. To achieve a high level of dust collection, use an industrial vacuum cleaner.



WARNING

Sawing and drilling generate dust. Excessive airborne particles may cause irritation to eyes, skin and respiratory tract. To avoid breathing impairment, always employ dust controls and protection suitable to the material being sawed or drilled; See OSHA (29 CFR Part 1910.1200).

RULES FOR SAFE OPERATION



DANGER

Failure to follow instructions in this manual may lead to serious injury. This equipment is to be operated by trained and qualified personnel only. The following safety guidelines should always be used when operating the MK-SDG-7.

GENERAL SAFETY



- **DO NOT** operate or service this equipment before reading this entire manual.
- This equipment should not be operated by persons under 18 years of age.
- **NEVER** operate this equipment when not feeling well due to fatigue, illness or taking medicine.
- **NEVER** operate this equipment under the influence of drugs or alcohol.
- Whenever necessary, replace nameplate, operation and safety decals when they become difficult to read.
- **ALWAYS** store equipment properly when it is not being used. Equipment should be stored in a clean, dry location out of the reach of children.
- **NEVER** leave the machine unattended. Turn off electric motor when unattended.



CAUTION Caution must be observed while servicing the machine. Rotating parts can cause injury if contacted.



- **NEVER** operate the machine in an explosive atmosphere.

ELECTRICAL REQUIREMENTS AND GROUNDING INSTRUCTIONS

In case of a malfunction or breakdown, grounding provides a path of least resistance for electric current to reduce the risk of electric shock. This tool is equipped with an electric cord having an equipment-grounding conductor and a grounding plug. The plug must be plugged into a matching outlet that is properly installed and grounded in accordance with all local codes and ordinances.



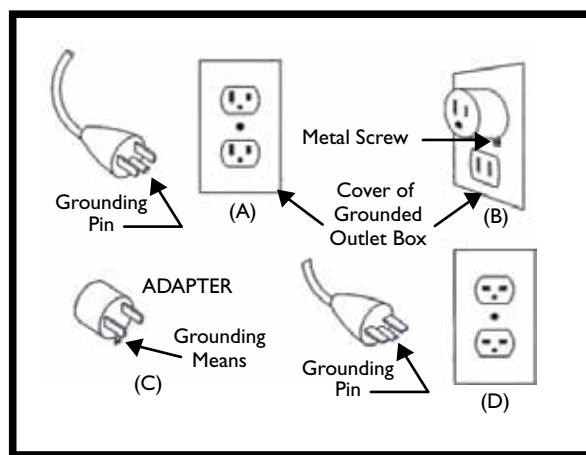
WARNING In order to prevent potential electrical shock and injury, the following electrical safety precautions and symbols should be followed at all times!

- Do not modify the plug provided – if it will not fit the outlet; have the proper outlet installed by a qualified electrician
- Improper connections of the equipment-grounding conductor can result in a risk of electric shock. The equipment grounding conductor is the insulated conductor that has an outer surface that is green, with or without yellow stripes. If repair or replacement of the electric cord or plug is necessary, do not connect the equipment-grounding conductor to a live terminal
- Check with a qualified electrician or service personnel if the grounding instructions are not completely understood, or if in doubt as to whether the tool is properly grounded
- Use only 3-wire extension cords that have 3-prong grounding plugs and 3-pole receptacles that accept the tool's plug
- Repair or replace a damaged or worn cord immediately

**WARNING**

This tool is intended for use on a circuit that has an outlet that looks like the one shown in Sketch A. The tool has a grounding plug that looks like the plug illustrated in Sketch A. A temporary adapter, which looks like the adapter illustrated in sketches B and C, may be used to connect this plug to a 2-pole receptacle as shown in Sketch B, if a properly grounded outlet is not available. The temporary adapter should be used only until a properly grounded outlet can be installed by a qualified electrician. The green-colored rigid ear, lug, and the like, extending from the adapter, must be connected to a permanent ground such as a properly grounded outlet box.

NOTE: Use of a temporary adapter is not permitted in Canada.



Circuit and Adapter Information

**WARNING**

To reduce the risk of electrocution, keep all connections dry and off the ground. A Ground Fault Circuit Interrupter (GFCI) should be provided on the circuit(s) or outlet(s) to be used for this machine. Receptacles are available having built-in GFCI protections and may be used for this measure of safety. When using an extension cord, the GFCI should be installed closest to the power source, followed by the extension cord and lastly, the machine.

**DANGER** Do Not use in wet conditions**WARNING**

Use only extensions cords that are intended for outdoor use. These extension cords are identified by a marking "Acceptable for use with outdoor appliances; store indoors while not in use." Use only extension cords having an electrical rating not less than the rating of the product. Do not use damaged extension cords. Examine extension cords before using and replace if damaged. Do not abuse extension cords and do not yank on any cord to disconnect. Keep cords away from heat and sharp edges. Always disconnect the extension cord from the receptacle before disconnection the product from the extension cord.

**WARNING**

To reduce the risk of electrocution, keep all connections dry and off the ground. Do not touch the plug with wet hands.

**WARNING**

Use of undersize extension cords result in low voltage to the motor that can result in motor burnout and premature failure. MK Diamond warns that equipment returned to us showing signs of being run in a low voltage condition, through the use of undersized extension cords will be repaired or replaced totally at the customers expense. There will be no warranty claim.

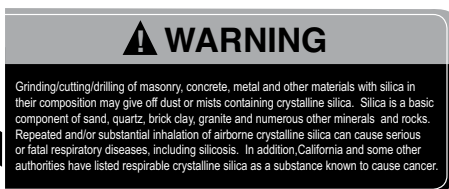
To choose the proper extension cord,

- Locate the length of extension cord needed in table provided.
- Once the proper length is found, move down the column to obtain the correct AWG size required for that length of extension cord. For example, a fifty foot extension cord would require an AWG size of 14 for a 120V volt circuit.

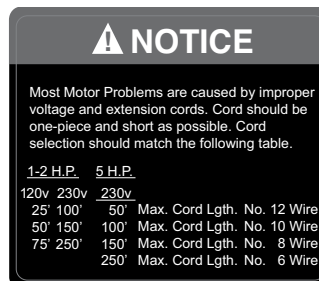
EXTENSION CORD MINIMUM GAGE FOR LENGTH				
VOLTS	TOTAL LENGTH OF CORD IN FEET			
	25 ft. AWG	50 ft. AWG	75 ft. AWG	100 ft. AWG
120V	12	10	8	6

OPERATION & SAFETY DECALS

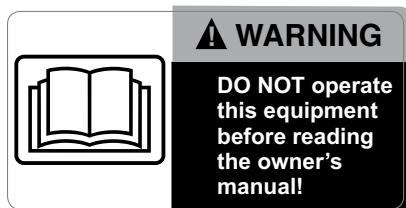
The MK-SDG-7 is equipped with a number of safety decals provided for operator safety and maintenance information. Should any of these decals become unreadable, replacements can be obtained by calling (800) 421-5830.



Decal A



Decal B



Decal C



Decal D



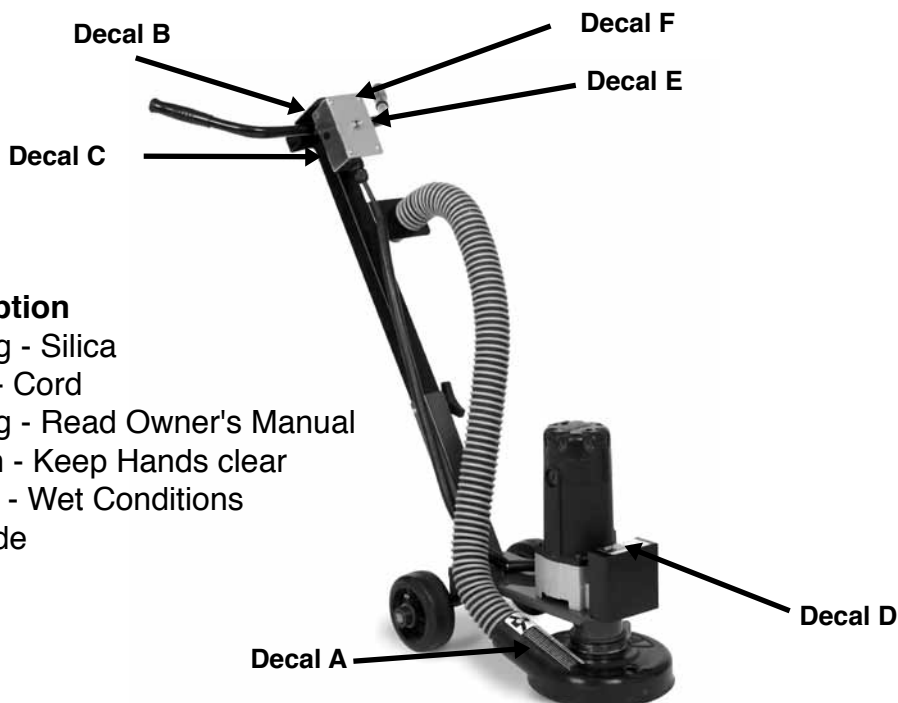
Decal E



Decal F

MK-SDG-7 Safety Decal Sheet, Part No. 168145

SAFETY DECAL LOCATIONS



Decal	Location	Description
A	IXL Shroud	Warning - Silica
B	Starter Switch	Notice - Cord
C	Starter Switch	Warning - Read Owner's Manual
D	Weight	Caution - Keep Hands clear
E	Starter Switch	Danger - Wet Conditions
F	Starter Switch	QR Code

MK-SDG-7 Safety Decal Locations

FEATURES

- 120V/15 Amp motor, disc RPM of 3,500
- Constructed with sturdy heavy gauge steel
- MK-IXL vacuum shroud for dust control
- Shroud accommodates diamond cup wheels up to 7" in diameter
- Attaches to traditional shop vacuum, reducing risk of respiratory problems
- Lightweight portable size for use in small areas
- Adjustable handlebar for operator comfort
- Removable handlebars make it easy to store and to transport
- Easy to maneuver by one person
- Levels uneven surfaces and quickly removes epoxies and thin coatings

PRODUCT SPECIFICATIONS

Perfect for small jobs, the MK SDG-7 is designed to dry grind concrete surfaces to a smooth finish. Durably built with heavy gauge steel it is still lightweight and portable and the removable handle bar makes it easy to transport. The dust control system is ready to hook-up to any vacuum system for dustless grinding. Comes with the MK IXL dust shroud and a 7" cup wheel.

Model	MK-SDG-7
Disc RPM	3500
Disc Capacity	7" (178 mm)
Arbor	5/8" - 11
LxWxH (inches)	34.6" x 17.5" x 32"
LxWxH (mm)	879 x 445 x 813
Weight	44 lbs. (18.6 kg)
Part #	166859



DANGER Do Not Use in Wet Conditions

ASSEMBLY

Place the handle bar assembly into the base and screw the tri-knob in to hold it in place



Place shroud on flange



Tighten clamp with wing nut so it is firmly attached



Attach the vacuum hose to the shroud and vacuum outlet port

INSTALLING/REPLACING CUP WHEEL

Use a 15/16 wrench on the cup wheel bolt, and a 1" wrench on the hex shaft. Place the 1" wrench between the cup wheel and the dust shroud, as shown, until the wrench (open end) goes over the hex shaft. Hold the shaft in place and use the 15/16 wrench to break the bolt free. Once it is broken free you can turn the bolt by hand until it comes off with the cup wheel. Replace with new cup wheel and tighten bolt. Use wrenches to make sure the bolt is tight, before grinding.

OPERATION**BEFORE STARTING**

1. Inspect area before grinding. Remove all debris that could damage diamond cup wheel or cause a hazardous situation.
2. Choose correct diamond wheel for the job condition.
3. Ensure grinding wheel mounting is clean and the retaining bolt is securely tightened.
4. Be sure the grinding wheel is positioned over the work area.



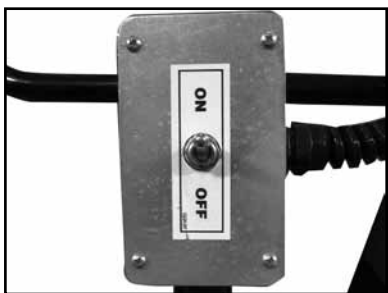
Check the shroud and cup wheel are free of obstruction. Plug in grinder to suitable power source.



Attach the hose from a vacuum to the vacuum outlet port. Turn on vacuum.



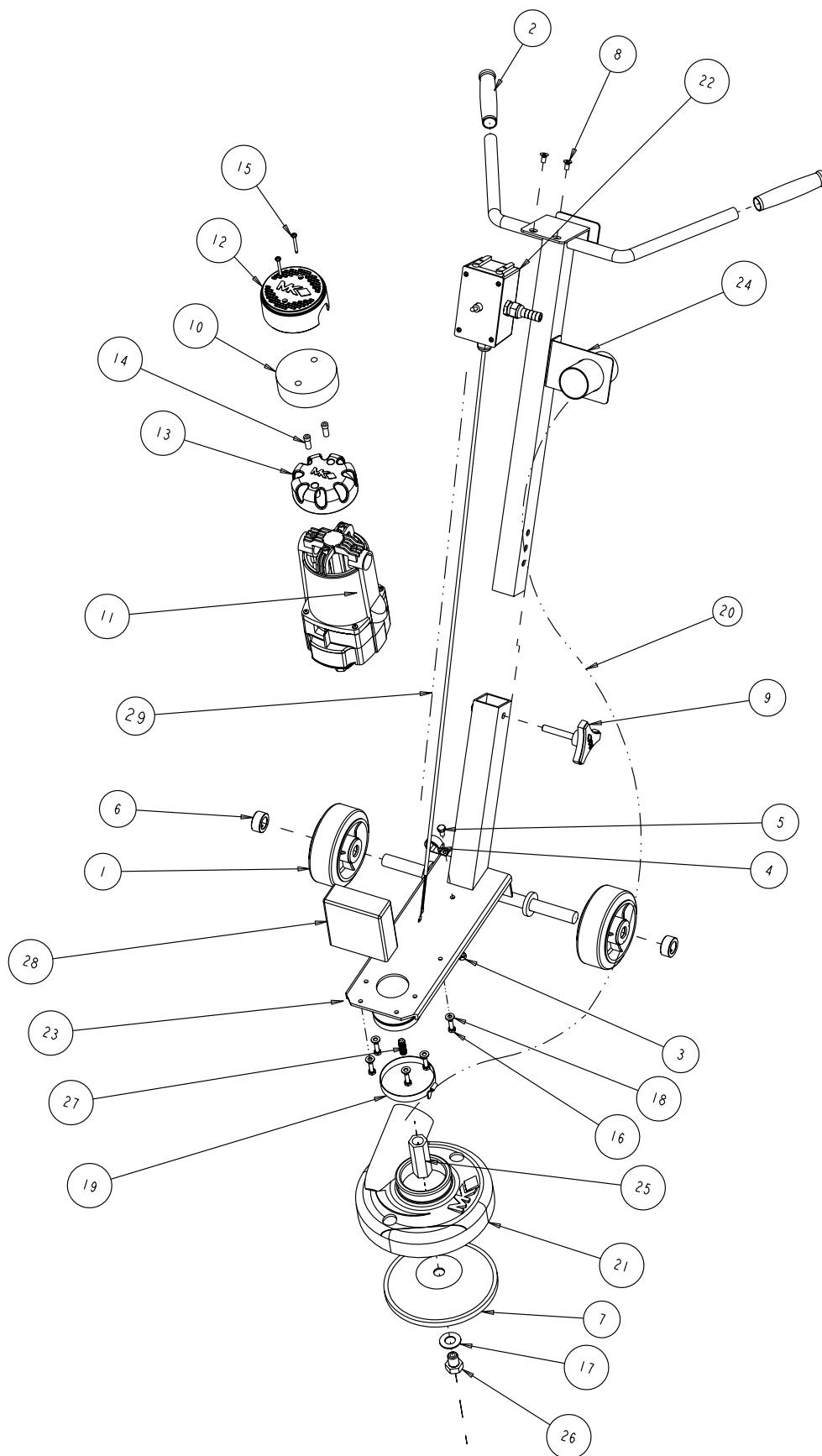
Tilt the grinder up from the floor.



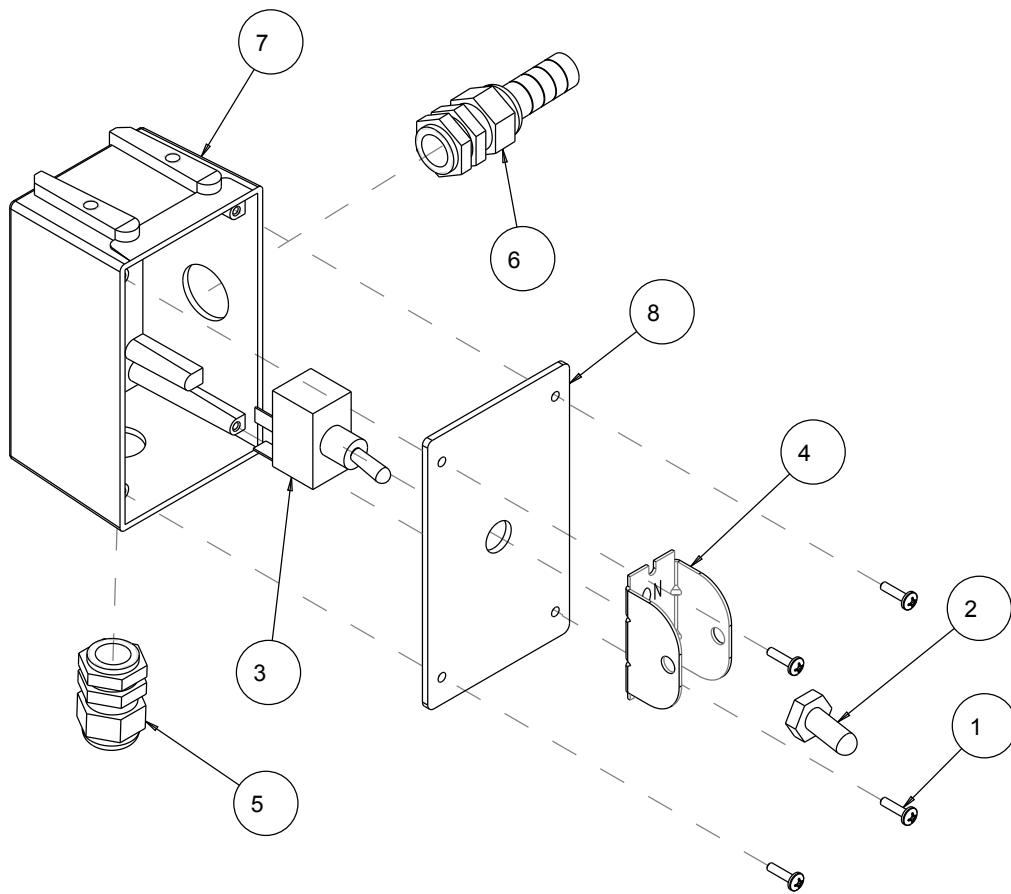
Start the motor and lower grinder to start grinding.



When grinding is completed, tilt grinder back and switch to OFF.











ITEM	DESCRIPTION	PART #	QTY
1	WHEEL, FRONT 5" X 2" W CONCSAW	138537	2
2	GRIP, HANDLE, 3/4 X 4-3/4	139949	2
3	NUT, 1/4 - 20 HEX	151893	1
4	CLAMP, 3/4 CUSHION LOOP	152594	1
5	SCREW, 1/4 -20 X 1/2 HEX HEAD	152608	1
6	COLLAR, SET, 3/4"	153814	2
7	MK-304CGI 7" CUP WHEEL	155446	1
8	SCREW, FLAT HEAD, 1/4 - 20 X 1/2 PHIL	155812	2
9	KNOB, TRI	156770-04	1
10	FILTER, MOTOR	157729	1
11	MTR, 115V, 15A, AC	157801-C	1
12	CAP, MOTOR	157877	1
13	SPACER, NYLON	157878	1
14	SPACE, CAP SCREW	157879	2
15	SCREW, #8 X 1-1/2 FLAT HD PHIL	158157	2
16	SCREW, HEX HEAD CAP, M6 X 1 X 20MM	158158	6
17	WASHER, FLAT, 5/8 SAE	158350	1
18	WASHER, FLAT M6	160215	6
19	CLAMP-DUST SHROUD	166407	1
20	VACUUM HOSE 2" X 37" LG.	166536	1
21	DUST SHROUD ASSEMBLY	166649	1
22	SWITCH ASSEMBLY	166858	1
23	BASE WELDMENT	166860	1
24	HANDLE BAR WELDMENT	166861	1
25	SHAFT ADAPTOR	166863	1
26	SCREW, HHCS 5/8 - 11 X 3/4	167177	1
27	SCREW, SET M10 X 1.5 X 30MM	167179	1
28	WEIGHT, GRINDER	167434	1
29	SPLIT LOOM 5/8"	167662	1



ITEM	DESCRIPTION	PART #	QTY
1	SCREW, #6 - 32 X 1/2 PAN HEAD SELF TAPPING	153459	4
2	COVER, SWITCH	139949	2
3	SWITCH, TOGGLE 125V 20A	154310	1
4	PLATE, TOGGLE SWITCH LOCKOUT	156211	1
5	MOTOR CORD	167176	1
6	CORD, POWER, 14/3 SJTW X 5-15P	167180	1
7	BOX SWITCH MOD	167432	1
8	PLATE,COVER	167433	1

ACCESSORIES

Recommended 7" Cup Wheels For A Variety Of Applications

Single Row Grinding Cup Wheels		Double Row Grinding Cup Wheels	
	MK-304CG-1 <ul style="list-style-type: none"> • 12 segment cup wheel • 6mm diamond depth height • 600-800 sq. ft. area • For concrete deburring & rough surface grinding 		MK-304SG-2 <ul style="list-style-type: none"> • 24 segment cup wheel • 6mm diamond depth height • 800-1200 sq. ft. area • For concrete deburring & rough surface grinding
Turbo Cup Wheels		PCD Cup Wheels	
	MK-504CG-1 <ul style="list-style-type: none"> • 12 segment cup wheel • 6mm diamond depth height • 1800-2400 sq. ft. area • For fast surface grinding 		MK-604CG-1 <ul style="list-style-type: none"> • 12 segment cup wheel • 800-1000 sq. ft. area • For epoxy/paint removal
	MK-504SG-2 <ul style="list-style-type: none"> • 24 segment cup wheel • 6mm diamond depth height • 2400-3000 sq. ft. area • For fast surface grinding 		MK-604SG-2 <ul style="list-style-type: none"> • 18 segment cup wheel • 1400-1800 sq. ft. area • For epoxy/paint removal
T-Segment Cup Wheel		Bi-Turbo Cup Wheel	
	T-Segment <ul style="list-style-type: none"> • 14 segment cup wheel • 6mm diamond depth height • 1800-2400 sq. ft. area • For smooth surface grinding 		MK-704SG-2 <ul style="list-style-type: none"> • 18 segment cup wheel • 6mm diamond depth height • 5000-8000 sq. ft. area • For high efficiency surface grinding

7" 5-PACK Bulk SAWTEC-ZEK Abrasive Grinding Disks

Grinding Disks for removing mastic, epoxy and urethane coatings.
Five disk, bulk packs. 7/8" t

Four grits are offered for different coating removal applications:

- 8 Grit Rough, aggressive removal of heavy coatings *Part # 167836*
- 16 Grit Heavy-duty removal of mastic, epoxy and urethane coatings *Part # 167837*
- 24 Grit Light scuffing and cleaning with minimal removal *Part # 167838*
- 36 Grit Light scuffing and cleaning with minimal removal *Part # 167839*
- **Single Disc Grinder Adapter *Part # 169216* is required for Zek Disc**



Part# 166964

MK-IXL HINGED SHROUD

- Use for grinding against walls and edges

ORDERING INFORMATION

You may order MK Diamond products through your local MK Diamond distributor or, you may order direct from MK Diamond.

When ordering direct from MK Diamond, please have the following information ready before calling:

- The Model Number of the saw
- The Serial Number of the saw
- Where the saw was purchased and when
- The Part Number for the part(s) being ordered
- The Part Description for the part(s) being ordered

NOTE: There is a \$25.00 minimum order when ordering direct from MK Diamond. A \$5.00 charge will be added to orders having a net billing value under \$50.00. All purchases must be made using VISA, MasterCard or American Express.

All parts may be ordered by calling toll free to – 800 421-5830 or 310 539-5221 and asking for Customer Service. For technical questions, call – 800 474-5594.

RETURN MATERIALS POLICY

To expedite the service relative to the return of a product purchased through MK Diamond, please observe the following:

NOTE: When returning all items, they must have been purchased within the previous twelve (12) months.

- Have the Model Number of the saw
- Have the Serial Number of the saw
- Have the location of where the saw was purchased
- Have the date when the saw was purchased
- Contact Customer Service for approval to return the item(s)
- Obtain a Returned Goods Number (RGA) authorizing the return
- Follow the packaging instructions in the following section
- Ensure your item(s) are prepaid to the destination

For returned items, call toll free to – 800 421-5830 or 310 539-5221 and ask for Customer Service. For technical questions, call – 800 474-5594 or 310 257-2845.

PACKAGING INSTRUCTIONS

- Remove the Cutting Head and Support Angle Assembly
- Dry the saw before shipping
- When packing, include the following: SDG-7, IXL Shroud, and Cup Wheel (Other Accessories are not required)
- Package the unit in its original container or one of comparable size (do not ship the unit partially exposed)
- Ensure all parts are secured in the packaging to prevent moving

AUTHORIZED SERVICE CENTERS

For quicker repair time, you may contact MK Diamond Customer Service, toll free, at 800 421-5830 or 310 539-5221 for the Authorized Service Center closest to you or visit our web site at www.mkdiamond.com. For technical questions, call – 800 474-5594.

CONTACT:

Please contact MK Diamond Products, Inc. Customer Service Department with any questions you might have regarding distributors, parts or service.

Telephone: **(800) 421-5830**

Fax: **(310) 539-5158**

E-mail: **Customer_Service@MKDiamond.com**

Customer Service Hours: **Monday through Friday, 6AM-4PM PST**

MK Diamond Products, Inc.

1315 Storm Parkway

Torrance, CA 90501

MK DIAMOND PRODUCTS, INC. LIMITED WARRANTY

MK DIAMOND PRODUCTS, INC. will guarantee every machine they build, to be free from defects in material and workmanship for (1) one year from date of purchase. The obligation of MK DIAMOND PRODUCTS, INC. under this warranty is limited to the repair or replacement of any parts which, under normal use, prove to be defective in material or workmanship. The parts involved or the unit in question should be returned to MK DIAMOND PRODUCTS, INC. or to a point designated by us, transportation prepaid.

This warranty does not obligate us to bear the cost of labor or transportation charges in connection with replacement or repair of defective parts. Likewise, it shall NOT apply to any unit which has been subjected to misuse, neglect or accident. This warranty does NOT apply to any machine which has been repaired or altered outside our factory.

This warranty does NOT obligate MK DIAMOND PRODUCTS, INC., with respect to items not of our manufacture, such as engines, motors, hydraulics, etc., which are subject to their own guarantees and warranties.

We shall in no event be liable for consequential damages or contingent liabilities arising out of failure of any equipment or parts to operate properly.

© COPYRIGHT 2012, MK DIAMOND PRODUCTS, INC. ALL RIGHTS RESERVED.

The MK Diamond logo is a registered trademark of MK Diamond Products, Inc. and may not be used, reproduced, or altered without written permission. All other trademarks are the property of their respective owners and used with permission.

MK Diamond may have patents, patent applications, trade marks, copyrights of other intellectual property right covering this product in this document.

This manual MUST accompany the equipment at all times. This manual is considered a permanent part of the equipment and should remain with the unit if resold.

The information and specifications included in this publication were in effect at the time of approval for printing.

MK-SDG-7
OWNERS MANUAL, PARTS LIST, EXPLODED
& OPERATING INSTRUCTIONS



MK Diamond Products, Inc.

MK Diamond Products, Inc.
1315 Storm Parkway
Torrance, CA 90501

Toll-Free: (800) 845-3729
Phone: (310) 539-2221
Fax: (310) 539-5158
www.mkdiamond.com