



# *Illustrated Parts List*

## *Portable Generator*



### **Model**

**Mfg. No.**  
030467-0

### **Description**

5,000 Watt Briggs & Stratton

**Manual Part No.** 313534

Revision -

Rev. Date: 8/9/2010

---

This generator is rated in accordance with CSA (Canadian Standards Association) standard C22.2 No. 100-04 (motors and generators).

Not for  
Reproduction

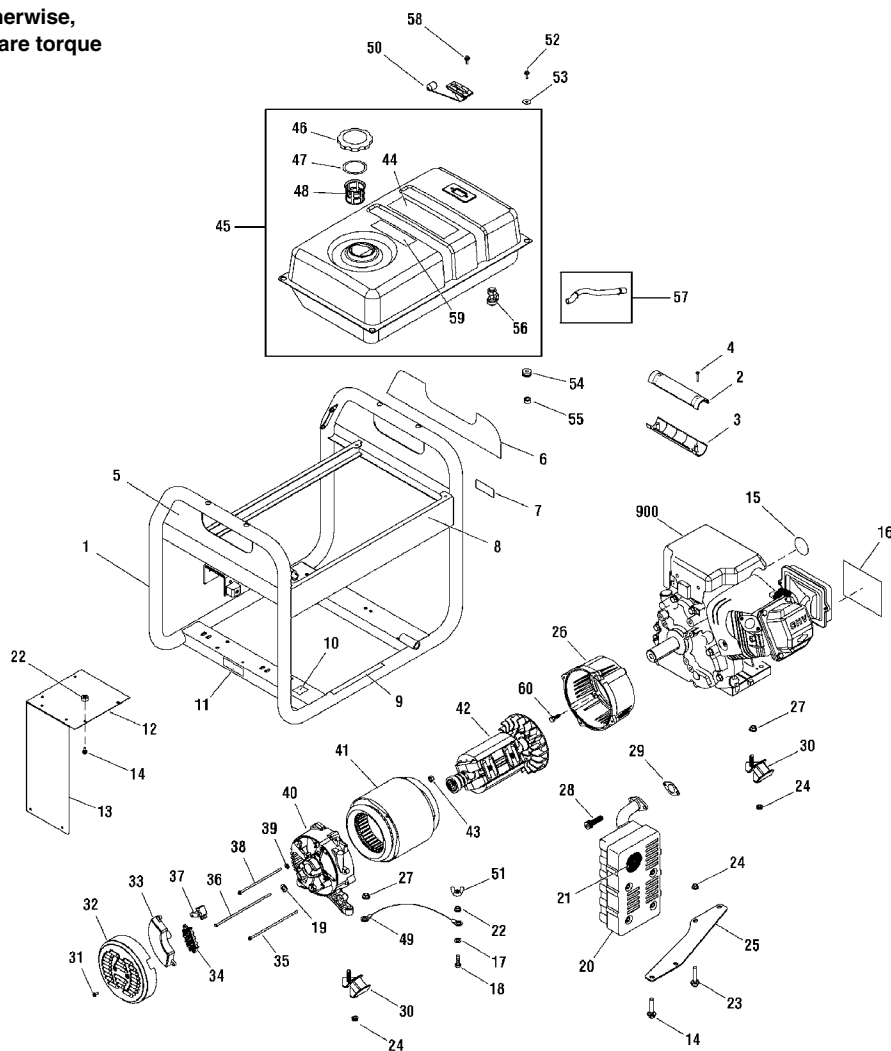
| <b>PRODUCT COMPONENTS</b>               | <b>PAGES</b>             |
|---|--------------------------|
| Main Unit .....                         | 4                        |
| Control Panel .....                     | 6                        |
| Wheel Kit .....                         | 7                        |
| <b>Torque Specification Chart .....</b> | <b>Inside Back Cover</b> |

Not for  
Reproduction

## Main Unit

313307

**NOTE:** Unless noted otherwise, use the standard hardware torque specification chart.



| REF. | PART NO. | DESCRIPTION  | REF. | PART NO. | DESCRIPTION      |
|------|----------|--------------|------|----------|------------------|
| 1    | 313312GS | CRADLE       | 18   | 47411GS  | SCREW            |
| 2    | 313321GS | GRIP, Handle | 19   | 312045GS | WASHER           |
| 3    | 313322GS | GRIP, Handle | 20   | 189008GS | MUFFLER          |
| 4    | 75477GS  | SCREW        | 21   | 83083GS  | SCREEN           |
| 5    | 312562GS | DECAL        | 22   | 197861GS | NUT              |
| 6    | 312563GS | DECAL        | 23   | 311987GS | SCREW            |
| 7    | 197798GS | DECAL        | 24   | 67989GS  | NUT              |
| 8    | 312564GS | DECAL        | 25   | 189009GS | SUPPORT, Muffler |
| 9    | 200310GS | DECAL        | 26   | 207822GS | ADAPTER, Engine  |
| 10   | B4986GS  | DECAL        | 27   | 193747GS | NUT              |
| 11   | 200311GS | DECAL        | 28   | 204885GS | SCREW            |
| 12   | 313043GS | HEATSHIELD   | 29   | 695398   | GASKET           |
| 13   | 310718GS | HEATSHIELD   | 30   | 312012GS | MOUNT, Vibration |
| 14   | 209775GS | BOLT         | 31   | 207824GS | SCREW            |
| 15   | 276928   | DECAL        |      |          |                  |
| 16   | 312561GS | DECAL        |      |          |                  |
| 17   | 22097GS  | WASHER       |      |          |                  |

### Footnotes

\*\* Contact Engine Manufacturer

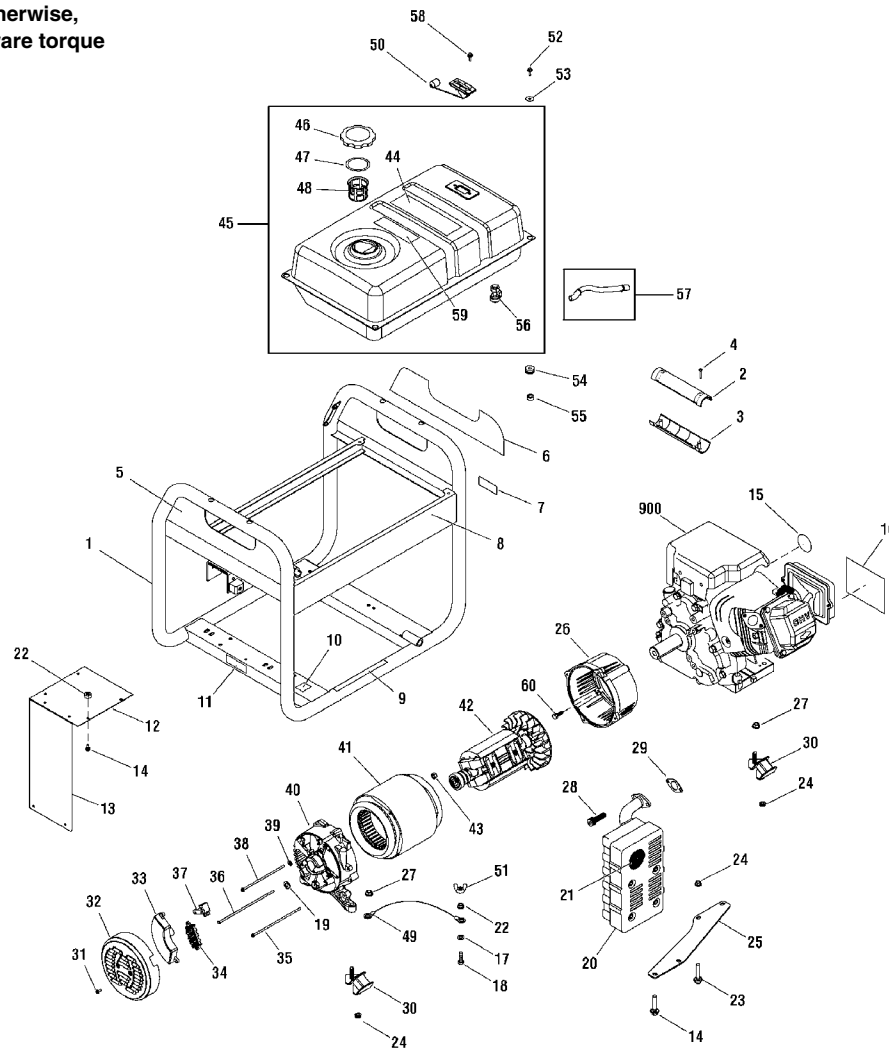
**The above parts group applies to the following Mfg. Nos.:**

030467-0 - 5,000 Watt Briggs & Stratton

# Main Unit

313307

**NOTE:** Unless noted otherwise, use the standard hardware torque specification chart.



| REF. | PART NO. | DESCRIPTION       | REF. | PART NO. | DESCRIPTION                          |
|------|----------|-------------------|------|----------|--------------------------------------|
| 32   | 313364GS | END COVER         | 49   | 312040GS | WIRE                                 |
| 33   | 313320GS | VOLTAGE REGULATOR | 50   | 311992GS | GAUGE, Fuel                          |
| 34   | 312041GS | TERMINAL BLOCK    | 51   | 87680GS  | NUT                                  |
| 35   | 312042GS | BOLT              | 52   | 209421GS | BOLT                                 |
| 36   | 313323GS | BOLT              | 53   | 312005GS | WASHER                               |
| 37   | 209441GS | BRUSH ASSEMBLY    | 54   | 312006GS | GROMMET                              |
| 38   | 312046GS | BOLT              | 55   | 312010GS | SPACER                               |
| 39   | 49226GS  | WASHER            | 56   | 209417GS | VALVE, Fuel                          |
| 40   | 209423GS | CARRIER, Bearing  | 57   | 791745   | FUEL HOSE (Cut to fit)               |
| 41   | 313317GS | STATOR            | 58   | 197896GS | SCREW                                |
| 42   | 313314GS | ROTOR             | 59   | 188333GS | DECAL                                |
| 43   | 207878GS | NUT               | 60   | 313368GS | BOLT                                 |
| 44   | 194984GS | DECAL             | 900  | ----     | ** ENGINE                            |
| 45   | 313310GS | TANK, Fuel        | --   | 312491GS | MANUAL, Operator's (Not Illustrated) |
| 46   | 311990GS | CAP, Fuel         |      |          |                                      |
| 47   | 209939GS | SEAL              |      |          |                                      |
| 48   | 311991GS | FILTER, Screen    |      |          |                                      |

### Footnotes

\*\* Contact Engine Manufacturer

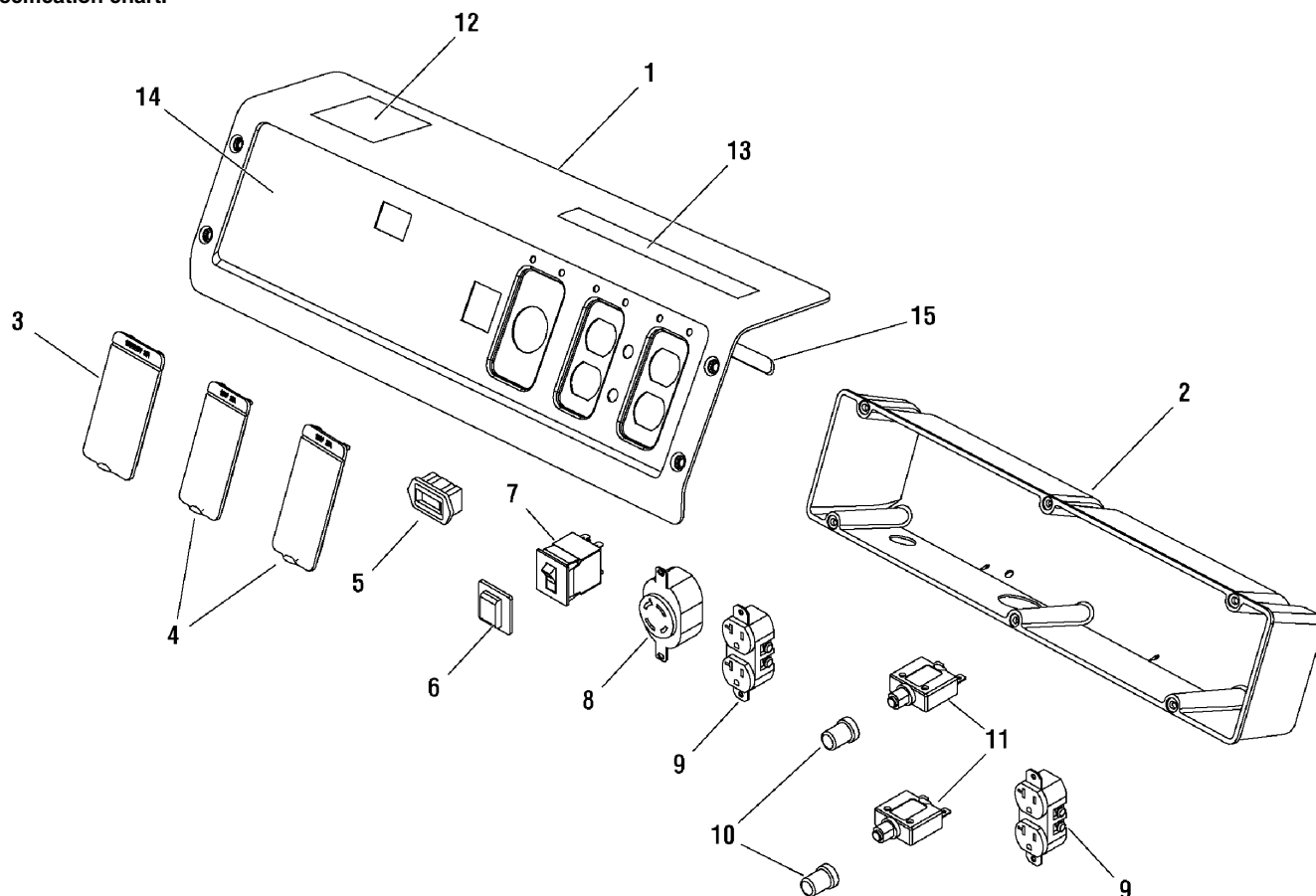
**The above parts group applies to the following Mfg. Nos.:**

030467-0 - 5,000 Watt Briggs & Stratton

## Control Panel

312970

**NOTE:** Unless noted otherwise,  
use the standard hardware torque  
specification chart.



| REF. PART NO. | DESCRIPTION                       | REF. PART NO. | DESCRIPTION |
|---------------|-----------------------------------|---------------|-------------|
| 1             | 313287GS<br>PANEL, Control        |               |             |
| 2             | 312978GS<br>BOX, Control Panel    |               |             |
| 3             | 312030GS<br>COVER, Outlet         |               |             |
| 4             | 312031GS<br>COVER, Outlet         |               |             |
| 5             | 198245GS<br>METER, Hour           |               |             |
| 6             | 191481GS<br>BOOT                  |               |             |
| 7             | 209677GS<br>BREAKER, Circuit, 25A |               |             |
| 8             | 43437GS<br>OUTLET, 120/240V TL30A |               |             |
| 9             | 68759GS<br>OUTLET, 120V 20A       |               |             |
| 10            | 84198GS<br>BOOT, Circuit Breaker  |               |             |
| 11            | 202394GS<br>BREAKER, Circuit, 20A |               |             |
| 12            | 202997GS<br>DECAL                 |               |             |
| 13            | 312572GS<br>DECAL                 |               |             |
| 14            | 312571GS<br>DECAL                 |               |             |
| 15            | 312969GS<br>TRIM, Edge            |               |             |

### Footnotes

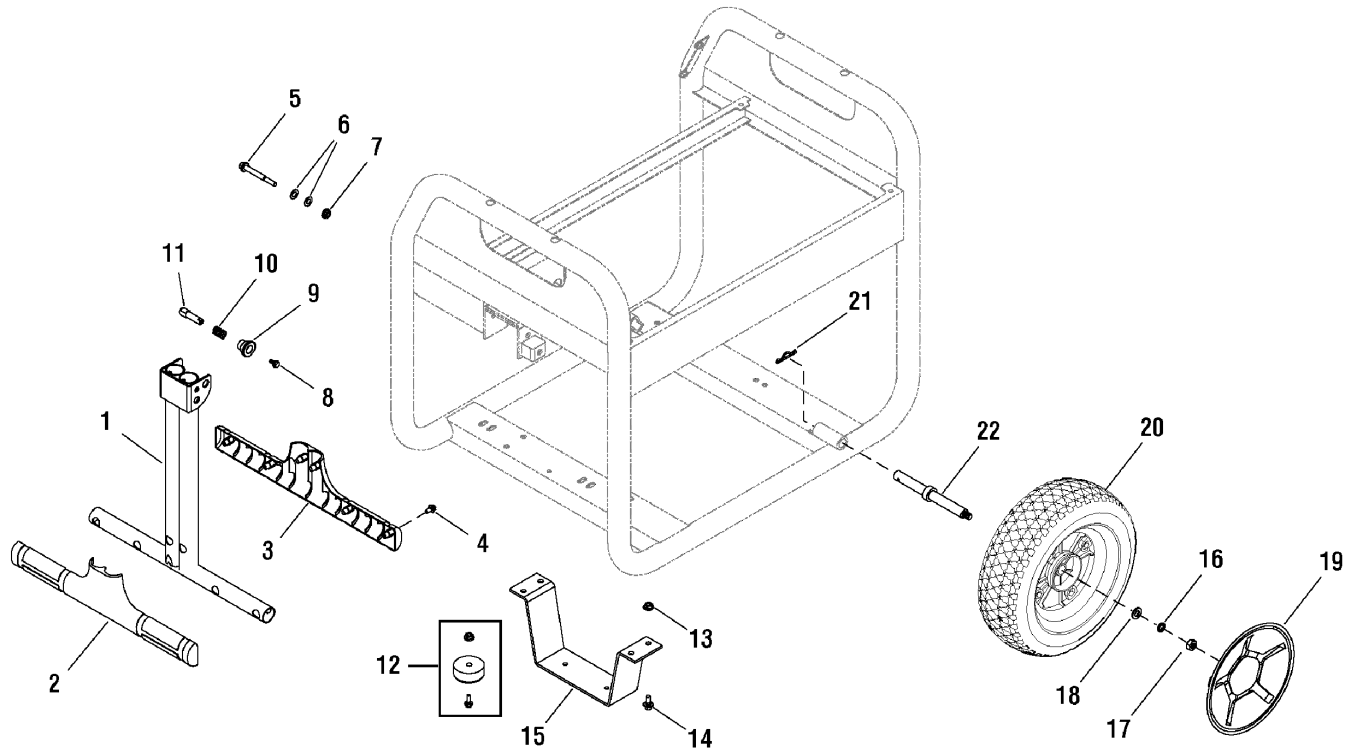
**The above parts group applies to the following Mfg. Nos.:**

030467-0 - 5,000 Watt Briggs & Stratton

# Wheel Kit

312967

**NOTE:** Unless noted otherwise, use the standard hardware torque specification chart.



| REF. PART NO. | DESCRIPTION               | REF. PART NO. | DESCRIPTION                        |
|---------------|---------------------------|---------------|------------------------------------|
| 1             | 312973GS HANDLE           | 18            | 209419GS WASHER                    |
| 2             | 313284GS GRIP, Handle     | 19            | 312022GS HUBCAP                    |
| 3             | 313283GS GRIP, Handle     | 20            | 209322GS WHEEL                     |
| 4             | 75477GS SCREW             | 21            | 5025210YP PIN, Hair, .0915 x 1-7/8 |
| 5             | 312974GS BOLT             | 22            | 312972GS AXLE                      |
| 6             | 187104GS WASHER           |               |                                    |
| 7             | 49820GS NUT               |               |                                    |
| 8             | 207825GS BOLT             |               |                                    |
| 9             | 312016GS KNOB             |               |                                    |
| 10            | 312015GS SPRING           |               |                                    |
| 11            | 312017GS PIN              |               |                                    |
| 12            | 192310GS MOUNT, Vibration |               |                                    |
| 13            | 52857GS NUT               |               |                                    |
| 14            | 42568GS BOLT              |               |                                    |
| 15            | 312968GS SUPPORT, Leg     |               |                                    |
| 16            | 46526GS WASHER            |               |                                    |
| 17            | 209413GS NUT              |               |                                    |

## Footnotes

**The above parts group applies to the following Mfg. Nos.:**

030467-0 - 5,000 Watt Briggs & Stratton

Not for  
Reproduction



Not for  
Reproduction

Not for  
Reproduction

# Hardware Identification & Torque Specifications

| Torque Specification Chart                             |           |      |           |      |            |      |            |      |
|--|-----------|------|-----------|------|------------|------|------------|------|
| FOR STANDARD METRIC MACHINE HARDWARE (Tolerance ± 20%) |           |      |           |      |            |      |            |      |
| Property Class   | 5.6       |      | 8.8       |      | 10.9       |      | 12.9       |      |
|  | Class 5.6 |      | Class 8.8 |      | Class 10.9 |      | Class 12.9 |      |
| Size Of Hardware                                       | in/lbs    |      | in/lbs    |      | in/lbs     |      | in/lbs     |      |
|  | ft/lbs    | Nm.  | ft/lbs    | Nm.  | ft/lbs     | Nm.  | ft/lbs     | Nm.  |
| M3   | 5.88      | .56  | 13.44     | 1.28 | 19.2       | 1.80 | 22.92      | 2.15 |
| M4   | 13.44     | 1.28 | 30.72     | 2.90 | 43.44      | 4.10 | 52.56      | 4.95 |
| M5   | 26.4      | 2.50 | 60.96     | 5.75 | 5.97       | 8.10 | 7.15       | 9.7  |
| M6   | 44.64     | 4.3  | 7.3       | 9.9  | 10.3       | 14   | 12.1       | 16.5 |
| M7   | 5.2       | 7.1  | 12.1      | 16.5 | 16.9       | 23   | 19.9       | 27   |
| M8   | 7.7       | 10.5 | 17.7      | 24   | 25         | 34   | 29         | 40   |
| M10  | 15        | 21   | 35        | 48   | 50         | 67   | 59         | 81   |
| M12  | 26        | 36   | 61        | 83   | 86.2       | 117  | 103        | 140  |
| M14  | 42        | 58   | 101       | 132  | 136        | 185  | 162        | 220  |
| M16  | 64        | 88   | 147       | 200  | 210        | 285  | 250        | 340  |
| M18  | 89        | 121  | 202       | 275  | 287        | 390  | 346        | 470  |
| M20  | 126       | 171  | 290       | 390  | 405        | 550  | 486        | 660  |
| M22  | 169       | 230  | 390       | 530  | 559        | 745  | 656        | 890  |
| M24  | 217       | 295  | 497       | 375  | 708        | 960  | 840        | 1140 |
| M27  | 320       | 435  | 733       | 995  | 1032       | 1400 | 1239       | 1680 |
| M30  | 435       | 590  | 995       | 1350 | 1401       | 1900 | 1681       | 2280 |
| M33  | 590       | 800  | 1349      | 1830 | 1902       | 2580 | 2278       | 3090 |
| M36  | 759       | 1030 | 1740      | 2360 | 2441       | 3310 | 2935       | 3980 |
| M39  | 988       | 1340 | 2249      | 3050 | 3163       | 4290 | 3798       | 5150 |

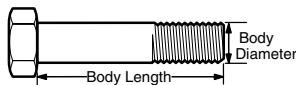
The guides and ruler furnished below are designed to help you select the appropriate hardware.



Nut, M8

Thread Diameter (mm)  
Inside Diameter (in)  
Threads per inch

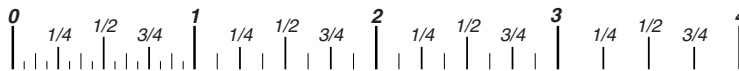
Nut, 1/2-16



Screw, M8- 1.25 x 25

Thread Diameter (mm)  
Body Diameter  
Distance between threads (mm)  
Threads per inch  
Body Length (mm)  
Body Length (in)

Screw, 1/2- 16 x 2



## Standard Hardware Sizing

When a washer or nut is identified as 1/2" (M8), this is the *Nominal size*, meaning the *inside diameter* is 1/2 inch (8mm metric thread diameter); if a second number is present it represents the *threads per inch* (distance between threads).

When bolt or capscrew is identified as 1/2 - 16 x 2" (M8 - 1.25 x 50), this means the *Nominal size*, or body diameter is 1/2 inch (8mm metric thread diameter), the second number, 16, represents the *threads per inch*, (1.25 thread diameter). The final number is the body length of the bolt or screw, 2 inches (50mm).

| Torque Specification Chart                      |             |       |             |       |             |         |
|---|-------------|-------|-------------|-------|-------------|---------|
| FOR STANDARD MACHINE HARDWARE (Tolerance ± 20%) |             |       |             |       |             |         |
| Hardware Grade                                  | No Marks    |       | SAE Grade 5 |       | SAE Grade 8 |         |
|   | SAE Grade 2 |       | SAE Grade 5 |       | SAE Grade 8 |         |
| Size Of Hardware                                | in/lbs      |       | in/lbs      |       | in/lbs      |         |
|   | ft/lbs      | Nm.   | ft/lbs      | Nm.   | ft/lbs      | Nm.     |
| 8-32  | 19          | 2.1   | 30          | 3.4   | 41          | 4.6     |
| 8-36  | 20          | 2.3   | 31          | 3.5   | 43          | 4.9     |
| 10-24   | 27          | 3.1   | 43          | 4.9   | 60          | 6.8     |
| 10-32   | 31          | 3.5   | 49          | 5.5   | 68          | 7.7     |
| 1/4-20  | 66          | 7.6   | 8           | 10.9  | 12          | 16.3    |
| 1/4-28  | 76          | 8.6   | 10          | 13.6  | 14          | 19.0    |
| 5/16-18   | 11          | 15.0  | 17          | 23.1  | 25          | 34.0    |
| 5/16-24   | 12          | 16.3  | 19          | 25.8  | 29          | 34.0    |
| 3/8-16  | 20          | 27.2  | 30          | 40.8  | 45          | 61.2    |
| 3/8-24  | 23          | 31.3  | 35          | 47.6  | 50          | 68.0    |
| 7/16-14   | 30          | 40.8  | 50          | 68.0  | 70          | 95.2    |
| 7/16-20   | 35          | 47.6  | 55          | 74.8  | 80          | 108.8   |
| 1/2-13  | 50          | 68.0  | 75          | 102.0 | 110         | 149.6   |
| 1/2-20  | 55          | 74.8  | 90          | 122.4 | 120         | 163.2   |
| 9/16-12   | 65          | 88.4  | 110         | 149.6 | 150         | 204.0   |
| 9/16-18   | 75          | 102.0 | 120         | 163.2 | 170         | 231.2   |
| 5/8-11  | 90          | 122.4 | 150         | 204.0 | 220         | 299.2   |
| 5/8-18  | 100         | 136   | 180         | 244.8 | 240         | 326.4   |
| 3/4-10  | 160         | 217.6 | 260         | 353.6 | 386         | 525.0   |
| 3/4-16  | 180         | 244.8 | 300         | 408.0 | 420         | 571.2   |
| 7/8-9   | 140         | 190.4 | 400         | 544.0 | 600         | 816.0   |
| 7/8-14  | 155         | 210.8 | 440         | 598.4 | 660         | 897.6   |
| 1-8   | 220         | 299.2 | 580         | 788.8 | 900         | 1,244.0 |
| 1-12  | 240         | 326.4 | 640         | 870.4 | 1,000       | 1,360.0 |

## NOTES

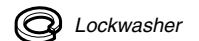
- These torque values are to be used for all hardware excluding: locknuts, self-tapping screws, thread forming screws, sheet metal screws and socket head setscrews.
- Recommended seating torque values for locknuts:
  - for prevailing torque locknuts - use 65% of grade 5 torques.
  - for flange whizlock nuts and screws - use 135% of grade 5 torques.
- Unless otherwise noted on assembly drawings, all torque values must meet this specification.

## Common Hardware Types

Hex Head Capscrew



Washer



Lockwasher

Carriage Bolt



Hex Nut

## Wrench & Fastener Size Guide

|                                  |                                  |                                  |  |                                 |
|----------------------------------|----------------------------------|----------------------------------|--|---------------------------------|
| 1/4" Bolt or Nut<br>Wrench—7/16" | 5/16" Bolt or Nut<br>Wrench—1/2" | 3/8" Bolt or Nut<br>Wrench—9/16" | 7/16" Bolt or Nut<br>Wrench (Bolt)—5/8"<br>Wrench (Nut)—11/16" | 1/2" Bolt or Nut<br>Wrench—3/4" |
| M6 Bolt or Nut<br>Wrench—10mm    | M8 Bolt or Nut<br>Wrench—13mm    | M10 Bolt or Nut<br>Wrench—17mm   | M12 Bolt or Nut<br>Wrench—19mm                                 | M14 Bolt or Nut<br>Wrench—22mm  |



Not for  
Reproduction

**Briggs & Stratton Power Products Group**

Copyright© 2010 Briggs & Stratton Power Products Group. All rights reserved. No part of this page can be reproduced or transmitted in any form by any means without the express written permission of Briggs & Stratton Power Products Group.