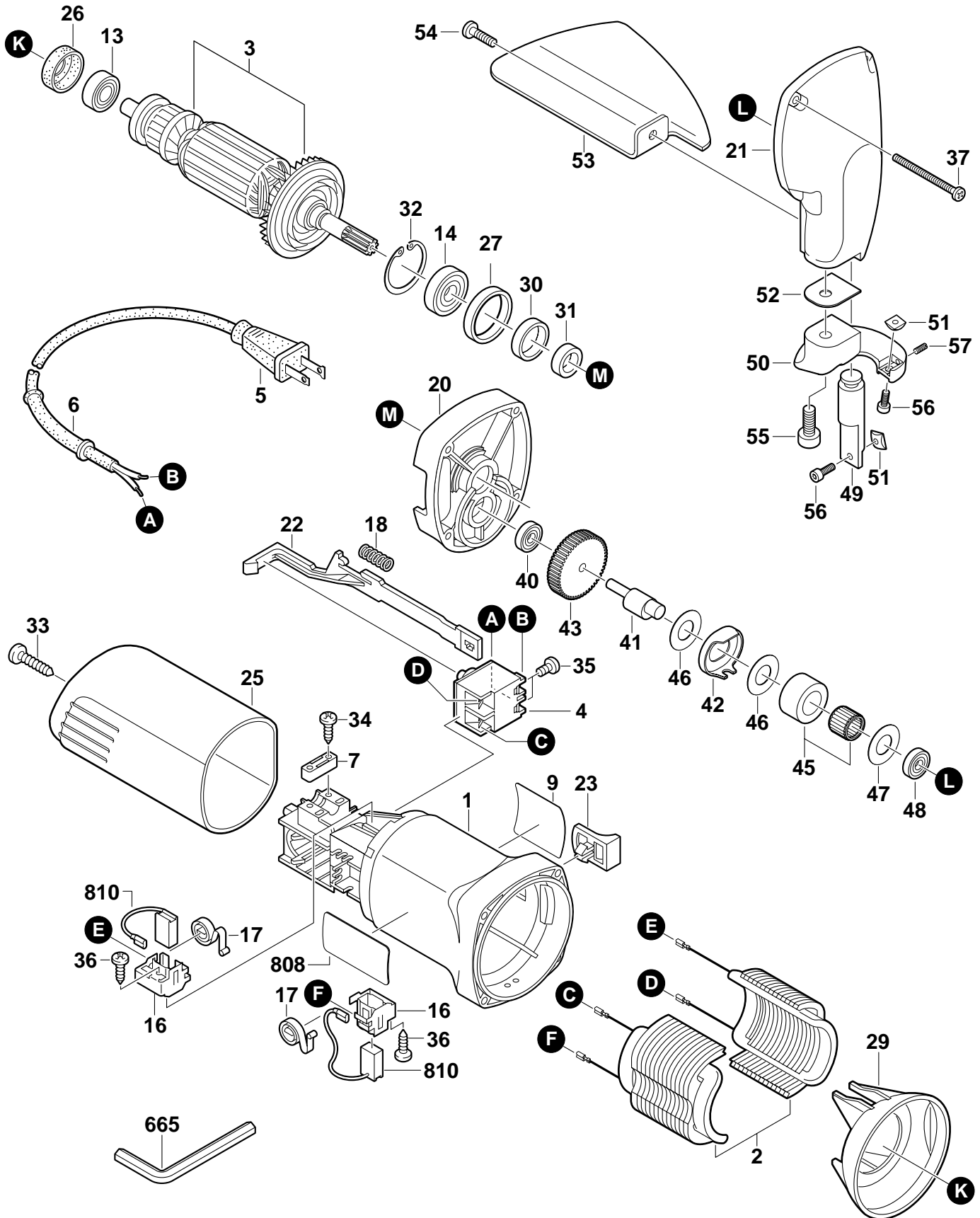


BOSCH

April 2001
INDUSTRIAL

16 GAUGE SHEAR
Model 0601500439

1500C



1500C 16 GAUGE SHEAR

Pos.	Part Number	Description {Qty.}	F/C	Pos.	Part Number	Description {Qty.}	F/C
1	3 605 102 090	Housing	71	34	2 910 611 019	Screw {2}	89
2	2 609 160 012	Field 120V	22	35	2 910 641 082	Screw {2}	89
3	2 609 160 018	Armature w/Fan 120V	AW	36	2 910 611 405	Screw {2}	89
4	1 607 200 146	Switch On/Off	15	37	2 910 611 082	Screw {4}	89
5	3 604 460 555	Cord	11	40	3 600 905 141	Ball Bearing	56
6	2 600 703 013	Strain Relief	11	41	3 607 233 005	Eccentric Shaft	53
7	2 601 035 001	Cord Clamp	89	42	3 609 202 081	Shield	9
9	3 601 119 193	Nameplate	9	43	3 607 233 006	Gear	32
13	2 600 905 072	Ball Bearing	60	45	3 607 233 007	Needle Bearing	56
14	2 600 905 021	Ball Bearing	61	46	3 607 233 008	Washer {2}	65
16	1 604 336 035	Brush Holder {2}	25	47	3 607 233 009	Washer	65
17	1 604 652 014	Brush Spring {2}	27	48	3 600 900 512	Ball Bearing	56
18	1 604 611 031	Spring	27	49	3 607 233 010	Plunger	52
20	3 605 700 162	Intermediate Flange	38	50	3 607 233 011	Foot Plate	88
21	3 607 233 021	Gear Housing	70	51	2 608 635 243	Blade {2}	94
22	1 602 319 009	Switch Slide	64	52	3 607 233 012	Plate	65
23	2 609 100 019	Switch Button	63	53	3 607 233 013	Chip Deflector	92
25	3 605 500 163	Housing Cover	70	54	3 603 391 007	Screw	89
26	1 600 502 024	Rubber Bearing Sleeve	82	55	2 910 401 289	Screw	89
27	3 600 206 015	O-Ring	78	56	2 910 401 118	Screw {2}	89
29	1 600 591 023	Air Deflector	24	57	2 912 040 118	Setscrew	89
30	3 600 929 037	Seal	77	665	1 907 950 004	Allen Wrench 3mm	9
31	2 600 300 047	Sleeve	82	808	3 601 110 451	Nameplate	9
32	2 916 660 011	Retaining Ring	89	810	1 607 014 144	Brush Set	26
33	2 914 201 703	Screw	89				

Service Notes: