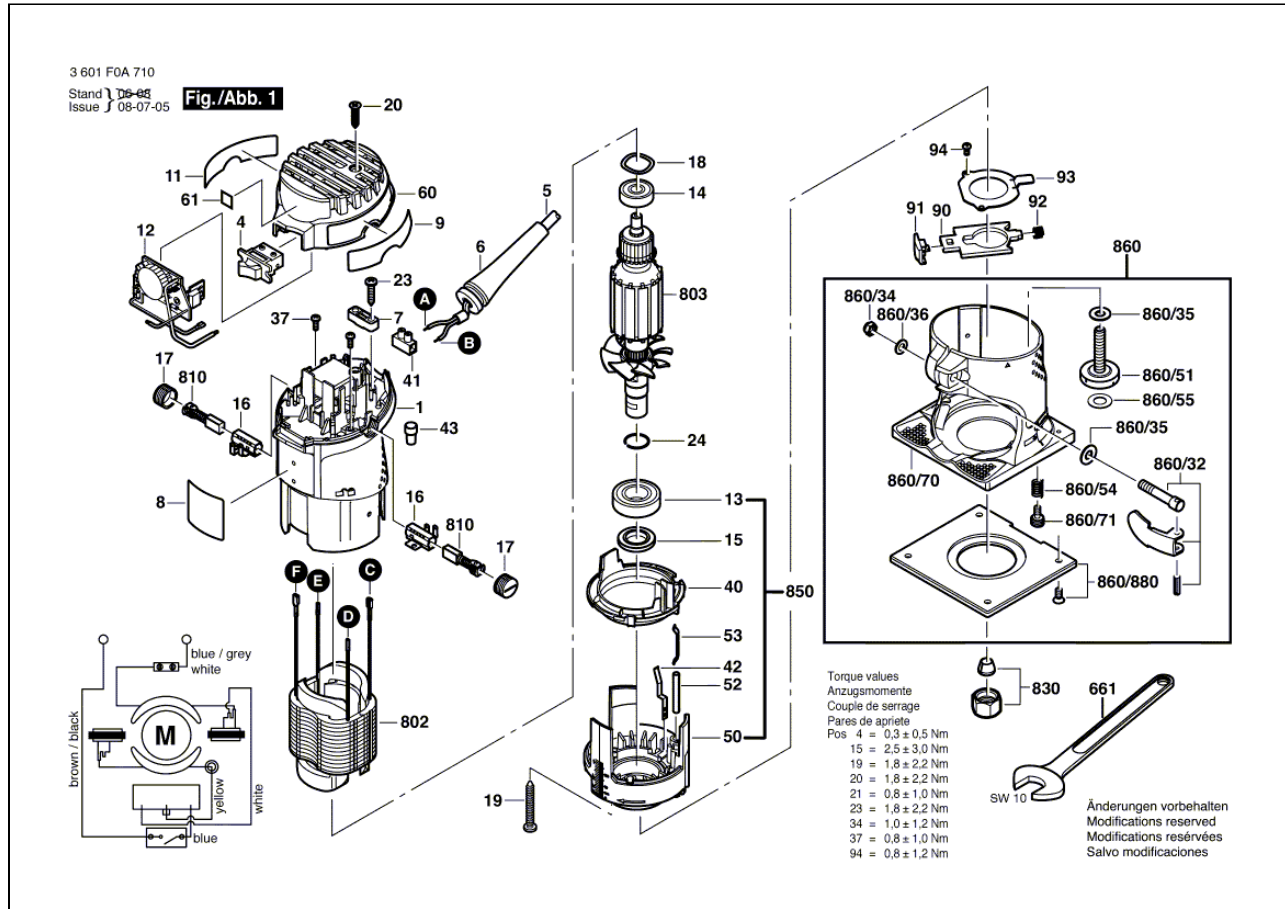


# ROUTER

## 3 601 F0A 710 PR20EVS

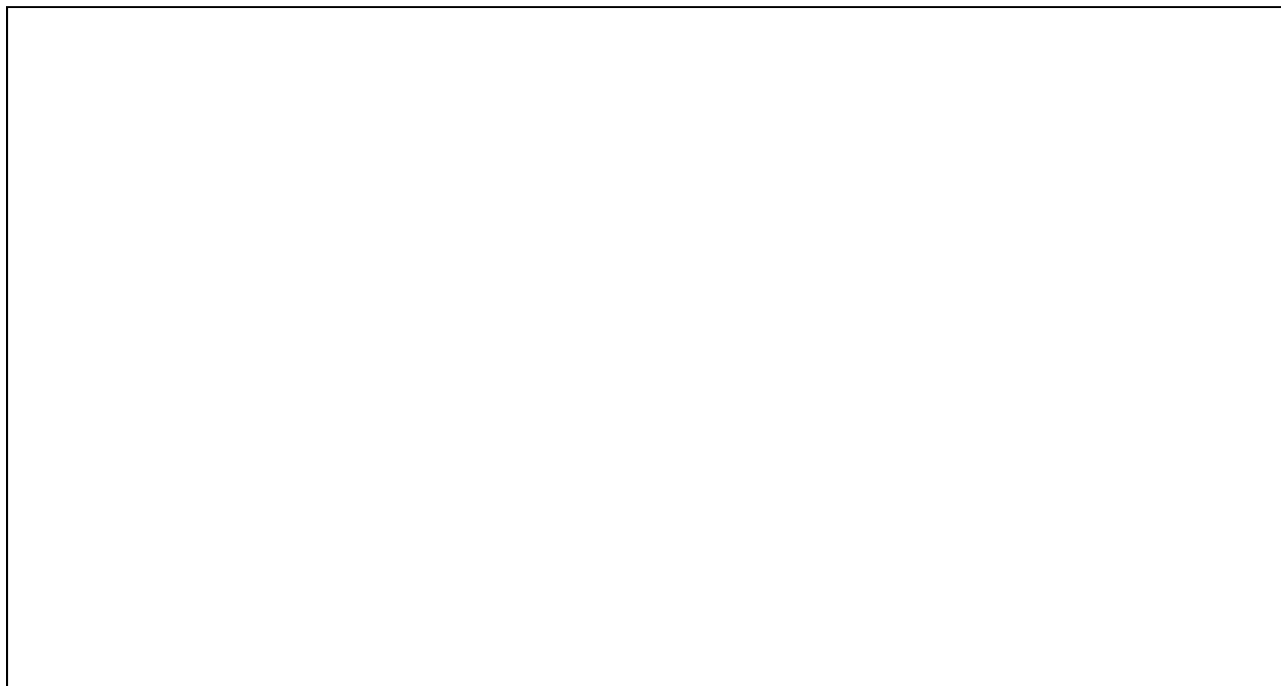
29.07.2009 23:21:20



Item	Quantity	Order No.	Designation	Price group	Page
1	1	2 609 100 222	MOTOR HOUSING / BLUE	28	1
4	1	2 609 120 274	ON-OFF SWITCH	24	1
5	1	1 604 460 308	POWER SUPPLY CORD	25	1
6	1	2 600 703 018	GROMMET / Ø7,3-Ø8,6x76MM	13	1
7	1	2 601 035 001	CABLE CLIP	11	1
8	1	2 609 131 588	TYPE LABEL	13	1
9	1	2 609 130 778	WARNING PLATE	12	1
11	1	2 609 130 777	WARNING PLATE	12	1
12	1	1 607 233 174	REGULATOR	33	1
13	1	2 609 110 435	DEEP-GROOVE BALL BEARING	20	1
14	1	2 609 110 436	DEEP-GROOVE BALL BEARING	19	1
15	1	2 609 110 253	SELF-LOCKING NUT	14	1
16	2	2 609 110 217	BRUSH HOLDER	11	1
17	2	2 609 100 203	BRUSH-COVER	10	1
18	2	2 609 110 294	SPRING WASHER	10	1
19	3	2 910 611 093	TAPPING SCREW	10	1
20	1	2 609 110 490	TAPPING SCREW	10	1
23	2	2 910 611 020	TAPPING SCREW / DIN 7981-ST3,9x19-C-H	11	1
24	1	2 916 650 006	SPRING RETAINING RING / DIN 471-15x1-FSt	11	1
37	2	2 603 490 017	TORX OVAL-HEAD SCREW / 3x10	10	1
40	1	2 609 100 247	AIR-DEFLECTOR RING	13	1

41	1	2 609 120 153	TERMINAL	11	1
42	1	2 609 110 297	CONTACT STRAP	10	1
43	1	2 609 120 173	END CAP	11	1
50	1	2 609 110 220	BEARING FLANGE	31	1
52	1	2 609 110 245	PRESSURE SPINDLE	11	1
53	1	2 609 110 246	SPRING PLATE	10	1
60	1	2 609 100 202	HOUSING COVER	20	1
61	1	2 609 130 914	MANUFACTURER'S NAMEPLATE	15	1
90	1	2 609 110 741	PLATE	15	1
91	1	2 609 100 248	BUTTON	11	1
92	1	2 609 110 255	COMPRESSION SPRING	10	1
93	1	2 609 110 480	COVER PLATE	11	1
94	2	2 609 110 367	SCREW / M 3x6	10	1
661	1	2 609 110 786	SINGLE-HEAD ENG. WRENCH / SW 10	20	1
802	1	2 609 120 171	STATOR / 120V	31	1
803	1	2 609 120 170	ARMATURE / 120V	36	1
808	1	2 609 131 636	NAMEPLATE		0
810	1	2 609 120 172	CARBON-BRUSH SET	24	1
830	1	2 609 160 084	COLLET CHUCK	22	1
850	1	2 609 110 348	BEARING FLANGE	33	1
854	1	2 609 199 054	BASE	46	2
854/2	1	2 609 100 387	BASE PLATE	23	2
854/3	1	2 609 110 378	SHAFT	24	2
854/4	1	2 609 110 379	TOOTHED BELT WHEEL	15	2
854/5	1	2 609 110 380	TOOTHED BELT WHEEL	17	2
854/6	1	2 609 170 038	V-BELT	21	2
854/7	1	2 609 100 386	COVER	21	2
854/8	1	2 609 110 381	SPRING	10	2
854/9	1	2 609 110 382	BUTTON	11	2
854/10	3	2 910 861 126	COUNTERSUNK-HEAD SCREW	10	2
854/11	1	2 609 170 047	COVER	11	2
854/12	2	2 609 110 606	BALL BEARING	23	2
854/13	1	2 609 110 462	SPRING RETAINING RING	19	2
854/15	1	2 609 100 389	COVER	20	2
854/20	1	2 609 110 505	NUT	12	2
854/21	1	2 609 110 557	PROTECTION PLATE	17	2
854/32	1	2 609 199 041	CLAMPING LEVER	17	2
854/34	1	2 609 110 289	HEX NUT	10	2
854/35	1	2 609 110 282	CONICAL SPRING WASHER	10	2
854/36	1	2 609 110 290	WASHER	10	2
855	1	2 609 199 055	BASE	38	2
855/2	1	2 609 110 372	BASE PLATE	18	2
855/3	1	2 609 100 381	BASE	19	2
855/4	2	2 609 110 455	PIN	10	2
855/5	1	2 600 590 006	RATCHET CAP	11	2
855/6	2	2 609 199 008	WING NUT	11	2
855/7	2	2 910 281 201	ROUND-HEAD BOLT / DIN 603-M6x20	10	2
855/9	1	2 609 110 483	PIN	10	2
855/16	2	2 916 011 014	PLAIN WASHER / DIN 125-A 6,4-ST	10	2
855/21	4	2 609 110 347	SCREW	10	2
855/32	1	2 609 199 041	CLAMPING LEVER	17	2
855/34	1	2 609 110 289	HEX NUT	10	2
855/35	2	2 609 110 282	CONICAL SPRING WASHER	10	2
855/36	1	2 609 110 290	WASHER	10	2
855/51	1	2 609 110 241	SCREW	13	2
855/54	1	2 609 110 306	COMPRESSION SPRING / DIN 17223, 2076 GRADE B	10	2
856	1	2 609 199 064	BASE	18	3

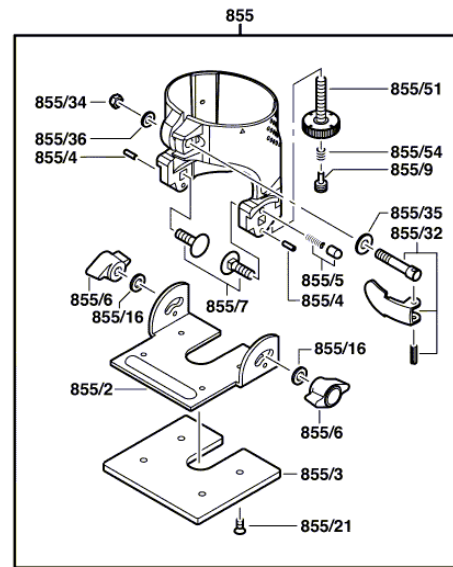
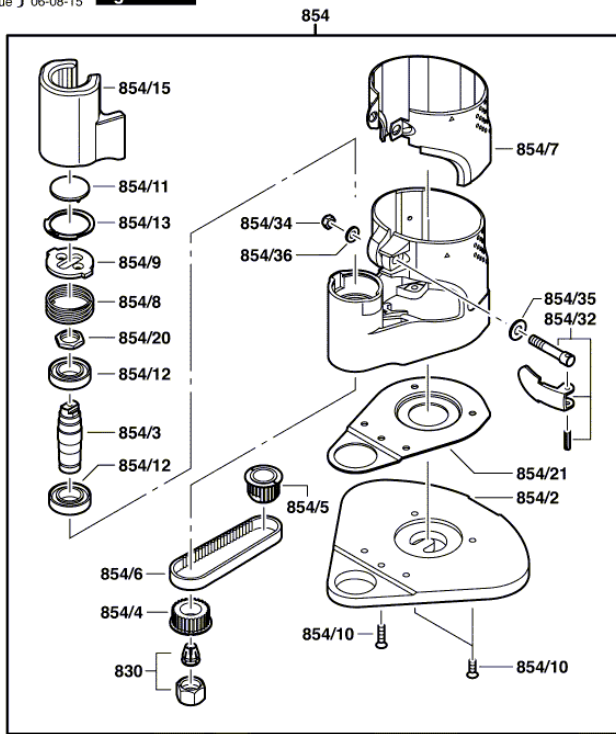
856/2	1	2 609 110 457	ADJUSTING CAM	10	3
856/3	2	2 609 110 458	SCREW	10	3
856/4	1	2 609 110 459	ADJUSTING WRENCH	12	3
856/7	1	2 609 110 279	HEXAGON-SOCKET KEY	12	3
857	1	2 609 199 053	EDGE GUIDE	20	3
857/656	1	2 609 110 364	SCREW	10	3
857/657	1	2 609 199 008	WING NUT	11	3
857/659	1	2 609 100 568	KNURLED THUMBSCREW	14	3
857/662	2	2 916 011 014	PLAIN WASHER / DIN 125-A 6,4-ST	10	3
858	1	2 609 199 110	EDGE GUIDE	31	3
859	1	2 609 199 063	EDGE GUIDE	22	3
860	1	2 609 199 102	BASE	38	1
860/32	1	2 609 199 041	CLAMPING LEVER	17	1
860/34	1	2 609 110 289	HEX NUT	10	1
860/35	2	2 609 110 282	CONICAL SPRING WASHER	10	1
860/36	1	2 609 110 290	WASHER	10	1
860/51	1	2 609 110 241	SCREW	13	1
860/54	1	2 609 110 306	COMPRESSION SPRING / DIN 17223, 2076 GRADE B	10	1
860/55	1	2 600 100 621	SHIM / 0,2 MM	11	1
860/70	1	2 609 110 307	BASE PLATE	32	1
860/71	1	2 609 110 283	BOLT	12	1
860/880	1	2 609 199 150	BASE PLATE	22	1
863	1	2 609 110 438	SINGLE-HEAD ENG. WRENCH / SW 17	18	3
864/1	1	2 609 100 383	BASE PLATE	29	3
864/2	1	2 609 100 423	HANDLE	15	3
864/3	1	2 609 100 140	CAP-HANDLE	15	3
864/4	1	2 609 110 607	SCREW	12	3
864/5	1	2 609 110 548	NUT	12	3
865	2	2 609 199 114	KNURLED THUMBSCREW	21	3
866	2	2 609 199 100	SCREW	11	3
868	4	2 609 110 553	SCREW	10	3
869	1	2 610 907 746	ADAPTER	20	3
870	1	2 609 100 384	DUST CHAMBER	20	3
871	1	2 609 100 385	CHUTE	21	3
872	1	2 609 160 120	ROUTER ATTACHMENT		0



3 601 F0A 710

Stand } 15-08  
Issue } 06-08-15

**Fig./Abb. 2**



Änderungen vorbehalten  
Modifications reserved  
Modifications réservées  
Salvo modificaciones

