



Air Filtration 10-2000



Revised: 12-2020





IMPORTANT SAFETY

INSTRUCTIONS WARNING – To reduce risk of injury:

1. **FOR YOUR OWN SAFETY, READ INSTRUCTION MANUAL BEFORE OPERATING THE TOOL.** Learn the tool's application and limitations as well as the specific hazards peculiar to it.
2. **KEEP GUARDS IN PLACE** and in working order.
3. **ALWAYS WEAR EYE PROTECTION.**
4. **GROUND ALL TOOLS.** If tool is equipped with three prong plug, it should be plugged into a three-hole electrical receptacle. If an adapter is used to accommodate a two prong receptacle, the adapter lug must be attached to a known ground. Never remove the third prong.
5. **KEEP WORK AREA CLEAN.** Cluttered areas and benches invite accidents.
6. **DON'T USE IN DANGEROUS ENVIRONMENT.** Don't use power tools in damp or wet locations, or expose them to rain. Keep work area well-lighted.
7. **KEEP CHILDREN AND VISITORS AWAY.** All children and visitors should be kept a safe distance from work area.
8. **MAKE WORKSHOP CHILDPROOF.** Use padlocks, master switches, or remove starter keys.
9. **DON'T FORCE TOOL.** It will do the job better and be safer at the rate for which it was designed.
10. **USE RIGHT TOOL.** Don't force tool or attachment to do a job for which it was not designed.
11. **WEAR PROPER APPAREL.** No loose clothing, gloves, neckties, rings, bracelets, or other jewelry to get caught in moving parts. Nonslip footwear is recommended. Wear protective hair covering to contain long hair.
12. **ALWAYS USE SAFETY GLASSES.** Wear safety glasses (must comply with ANSI Z87.1). Everyday eyeglasses only have impact resistant lenses; they are not safety glasses. Also use face or dust mask if cutting operation is dusty.
13. **SECURE WORK.** Use clamps or a vise to hold work when practical. It's safer than using your hands and frees both hands to operate tool.

14. **DON'T OVERREACH.** Keep proper footing and balance at all times.

15. **MAINTAIN TOOLS IN TOP CONDITION.** Keep tools sharp and clean for best and safest performance. Follow instructions for lubricating and changing accessories.

16. **DISCONNECT TOOLS** before servicing and when changing filters.

17. **USE RECOMMENDED ACCESSORIES.** The use of accessories and attachments not recommended by manufacturer may cause hazards or risk of injury to persons.

18. **AVOID ACCIDENTAL STARTING.** Make sure switch is in "OFF" position before plugging in power cord.

19. **NEVER STAND ON TOOL.** Serious injury could occur if the tool is tipped or if the fan blade is accidentally contacted.

20. **CHECK DAMAGED PARTS.** Before further use of the tool, a guard or other part that is damaged should be carefully checked to ensure that it will operate properly and perform its intended function-check for alignment of moving parts, binding of moving parts, breakage of parts, mounting, and any other conditions that may affect its operation. A guard or other part that is damaged should be properly repaired or replaced.

21. **NEVER LEAVE TOOL RUNNING UNATTENDED. TURN POWER OFF.** Don't leave tool until it comes to a complete stop.

22. **DRUGS, ALCOHOL, MEDICATION.** Do not operate tool while under the influence of drugs, alcohol or any medication.

23. **MAKE SURE TOOL IS DISCONNECTED FROM POWER SUPPLY** while motor is being mounted, connected or reconnected

WARNING:

This product can expose you to chemicals including lead which is known to the State of California to cause cancer and birth defects or other reproductive harm. For more information go to <http://www.p65warnings.ca.gov>.

WARNING:

Drilling, sawing, sanding or machining wood products generates wood dust and other substances known to the State of California to cause cancer. Avoid inhaling dust generated from wood products or use a dust mask or other safeguards for personal protection. Wood products emit chemicals known to the State of California to cause birth defects or other reproductive harm. For more information go to <http://www.p65warnings.ca.gov/wood>.

Table of Contents

IMPORTANT SAFETY INSTRUCTIONS	2
Table of Contents	3
Electrical Requirements	4
Specifications	5
For Your Own Safety	5
Contents of Shipping Carton	6
Tools Required for Assembly	6
Assembly	6
Controls and Features	7
Changing the Filters	8
Replacement Parts	9
Parts List for the AFS-1000B Air Filtration System	10
AFS-1000B Wiring Diagram	11
Warranty and Service	12

DESCRIPTION

This powerful unit is perfect for the smaller home shop. Simply hang it from the ceiling plug it in and let it do its thing. With the NEW auto dust sensor, the machine will automatically sense when there is dust in the air and turn itself on. It also senses when the air is clean and will automatically turn itself off. This NEW machine is so SMART it will clean the air in your shop without you even thinking about it. This unit was the first in the industry with the SMART auto sensor, remote control, timer and three speeds will quickly become the industry standard.

FEATURES

- The Patent pending SMART™ Auto Dust Sensor will automatically turn the machine on and off when it senses the dust levels in the air.
- Two-Filter System with Air Diffuser disperses outgoing air into a broader pattern
- Disposable Electrostatic Outer Filter attracts more dust particles than standard filters
- Inner Pocket Filter is removable for easy cleaning
- Easy Grip Handles allow easy portability of unit
- Four Eye Bolts let you hang unit from shop ceiling
- Remote Control has built-in timer with a 1-24 hour settings; automatically shuts system off at the end of the time setting
- Fully-Enclosed Ball Bearing Motor with Overload Protection for long, dependable service
- Rubber Feet prevent marring of surface when placed on workbench

Electrical Requirements

In the event of a malfunction or breakdown, grounding provides a path of least resistance for electric current to reduce the risk of electric shock. This tool is equipped with an electric cord having an equipment-grounding conductor and a grounding plug. The plug must be plugged into a matching outlet that is properly installed and grounded in accordance with all local codes and ordinances.

Do not modify the plug provided. If it will not fit the outlet, have the proper outlet installed by a qualified electrician.

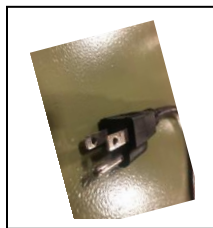
Improper connection of the equipment-grounding conductor can result in a risk of electric shock. The conductor, with insulation having an outer surface that is green with or without yellow stripes, is the equipment grounding conductor. If repair or replacement of the electric cord or plug is necessary, do not connect the equipment-grounding conductor to a live terminal.

Check with a qualified electrician or service personnel if the grounding instructions are not completely understood, or if in doubt as to whether the tool is properly grounded.

Use only three wire extension cords that have three-prong grounding plugs and three-pole receptacles that accept the tool's plug*.

Repair or replace a damaged or worn cord immediately.

This tool is intended for use on a circuit that has an outlet that looks the one illustrated in Figure A below. The tool has a grounding plug that looks like the grounding plug as illustrated in Figure A below. A temporary adapter, which looks like the adapter as illustrated in Figures B below, may be used to connect this plug to a two-pole receptacle, as shown in Figure B if a properly grounded outlet is not available.** The temporary adapter should only be used until a properly grounded outlet can be installed by a qualified electrician. The green colored rigid ear or tab, extending from the adapter, must be connected to a permanent ground such as a properly grounded outlet box.



* Canadian electrical codes require extension cords to be certified SJT type or better.

** Use of an adapter in Canada is not acceptable.

Specifications:

Model Number	10-2000 M1
Outer Filter	5 Microns
Inner Filter	1 Micron
Overall Dimensions (L x W x H/in)	44" x 24" x 20"
Sound Rating @ 3ft	High Speed 72.4 dB
.....	Medium Speed 60.5 dB
.....	Low Speed 58.3 dB
Air Flow	High Speed 1750 CFM
.....	Medium Speed 1300 CFM
.....	Low Speed 880 CFM
Filter Cycle (min.)	1.82
Cycles per Hour (20'x20'x8')	32.96
Motor	1/3 HP, 115V, 60Hz, 1 PH, 6P, 4.5A Net
Weight	110 lbs.
Shipping Weight	116 lbs.

For Your Own Safety

1. Read and understand instruction manual before installing or operating air cleaner.
2. To reduce the risk of injury disconnect the air cleaner from the power source (unplug) before servicing or changing filters.
3. If ceiling mounted, bottom of air cleaner must be at least 7 feet above the floor.
4. If ceiling mounted, mounts must be anchored to building structure which will support a minimum of at least 100 pounds. Never mount to surfaces such as dry wall or false ceiling grids, etc.
5. To reduce the risk of electrical shock, do not expose air cleaner to water or rain.
6. Never duct a machine directly into the air cleaner.
7. To avoid a potentially dangerous situation, do not use this equipment to filter flammable vapors or smoke. This air cleaner is designed and intended for the filtration of air borne wood dust only. It is neither designed nor intended for any other purpose whatsoever.
8. Failure to comply may result in serious injury and / or property damage.

The above specifications were current at the time this manual was published, but because of our policy of continuous improvement, GENERAL reserves the right to change specifications at any time and without prior notice, without incurring obligations.

Contents of Shipping Carton

- 1 Air Filtration Unit
- 1 Remote Control
- 2 AAA Batteries
- 4 Eye Bolts and Nuts
- 4 Mounting Brackets
- 1 Manual and Warranty Card

Tools Required for Assembly

- No. 2 Cross Point Screwdriver
- 10mm Wrench

- The air filtration unit does not require much assembly. You should take into consideration how and where you will place this unit.
- It can be mounted horizontally and vertically. The unit can also be hung from the ceiling.
- This unit will work best if it is located away from corners, and heating/cooling vents.
- If using on sawhorses the air filtration unit should be clamped in place.
- This unit is specifically designed to circulate and filter non-metallic dust, which is generated throughout the work area.



Assembly

CAUTION: ⚠

Mounts must be anchored to building structure, which will support a minimum of at least 100 pounds. Never mount to surfaces such as dry wall, false ceiling grids, etc.

1. Remove all packing from inside of the unit by removing the outer filter and inner filters.
2. The air filtration unit can be hung from the ceiling. Remove four screws from the cabinet top.
3. Hang the unit using four eyebolts (Fig. 1), and four hex nuts (Fig. 1) provided. (Fig. 2) shows the mounting hole centers.
4. The lock nut needs to be threaded almost all the way up the eyebolt. Screw the eye bolt into the hole and tighten lock nut against the cabinet top. You will need to hold the eye-bolt so it does not spin while tightening the lock nut.
5. Repeat steps for remaining three eyebolts.

Note: Make sure chain and ceiling hooks are properly rated for hanging this unit. **Hang unit with a seven-foot clearance from the floor to the bottom of the unit.**

Fig. 1 Eye Bolts & Hex Nuts



Fig. 2 Eye bolt threaded hole



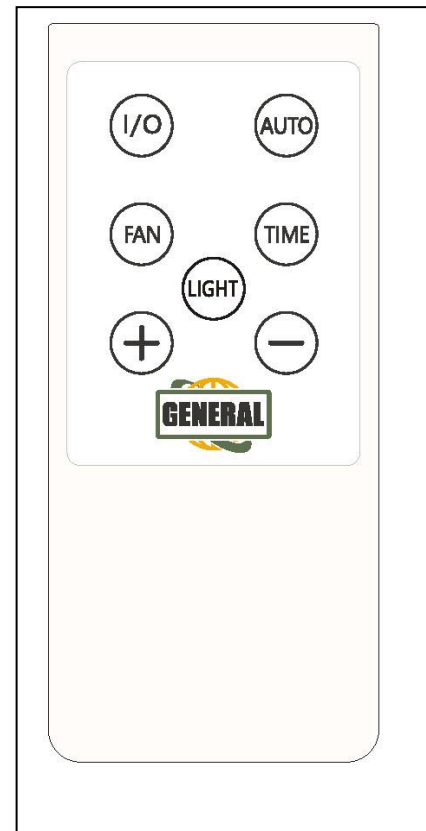
Remote Control and Features: The remote control is a six-button remote control as shown in (fig. 3)

Function of the keys:

1. The I/O key is the on-off key. Press once to power on and again to power off.
2. AUTO is the automatic mode key. Press this button to indicate that the fan and sensor will automatically operate according to the current air quality. For example, if the air quality is not good, the fan will start to work at high speed and high air volume, when the air quality get medium, it will change to medium air volume and when the air quality is good, the fan stops working.
3. FAN is the manual air volume adjustment key of the FAN. The air volume is divided into three levels: high, medium and low. After pressing this button, use the + (plus) or - (minus) button to manually adjust the air volume.
4. TIME is the timing function key. After pressing this key, use the + (plus) or - (minus) button to adjust the working time (1-12 Hours)
5. + and – keys are parameter adjustment keys.

The above remote control function requires the host LCD screen to display the corresponding changes synchronously during operation. Including timing and time indices display, fan speed change and air quality change display.

Fig. 3



Changing the Filters

WARNING: ⚠

To reduce the risk of injury, disconnect the air cleaner from the power source (unplug) before servicing or changing filters. Failure to comply may cause serious injury!

There are two filters that need to be changed. The outer filter can easily be removed by losing screw on bracket giving enough room for filter to slide out. This screw holds filter from coming out. (Fig. 4).

Now you can simply pull the filter out.

To remove the inner filter (Fig. 5) you need to remove the four (4) pan head screws on the side access panel of the unit. Once you have the panel off, you can slide the inner filter out.

The filters should be replaced depending on the amount of usage and the environment of your shop.

Clogged filters will reduce the amount of air circulation. There is an arrow indicating the air flow direction on the outer filter. Make sure the filter is inserted facing the proper direction.

Replacement Filters

Electrostatic outer filter
Washable electrostatic outer filter
Inner filter
Charcoal filter
HEPA filter

Fig. 4



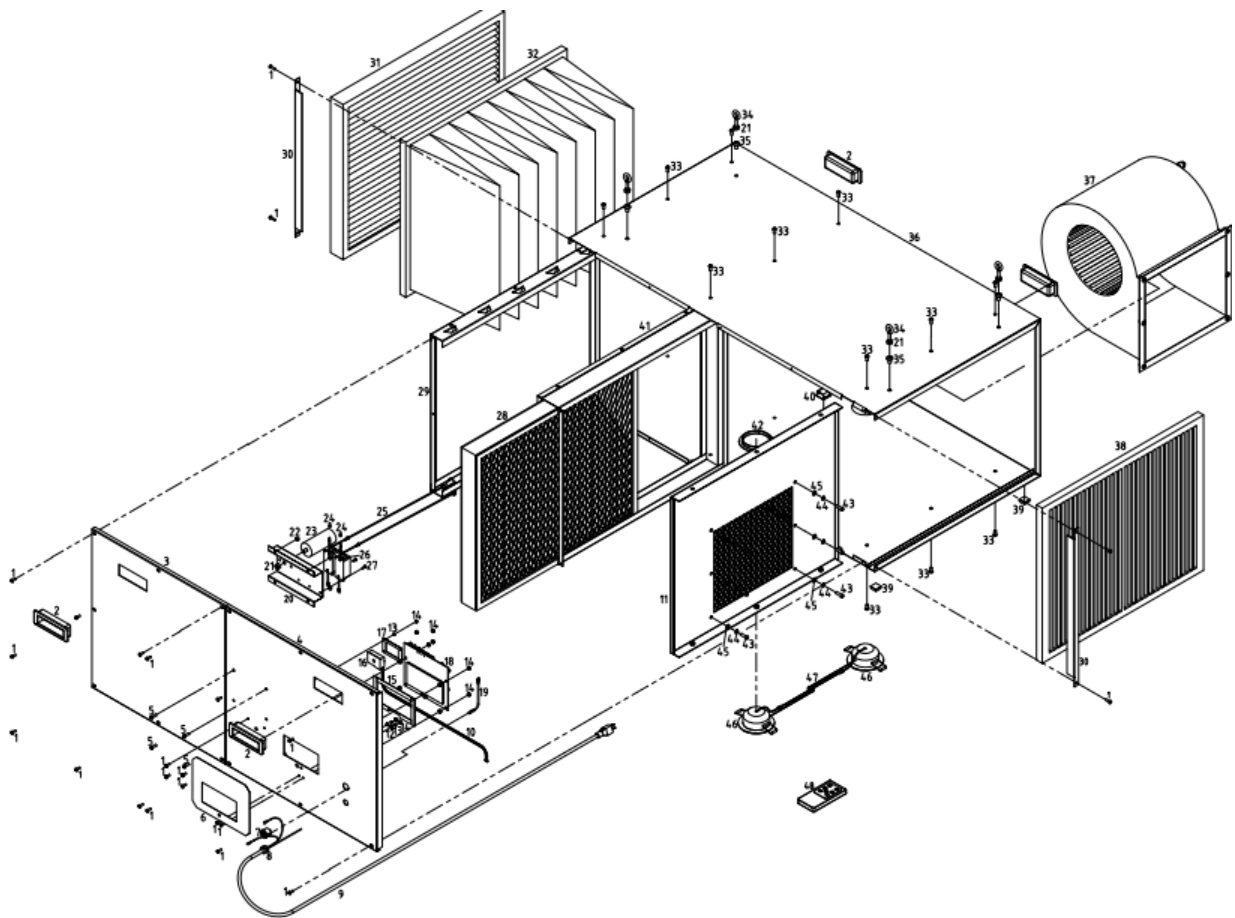
Fig. 5



Replacement Parts

To order parts or reach our service department, call 1-[888-664-0449](tel:888-664-0449), Monday through Friday (see our website for business hours, www.GENERALtools.com). Having the Model Number and Serial Number of your machine available when you call will allow us to serve you quickly and accurately.

10-2000 SCHEMATIC

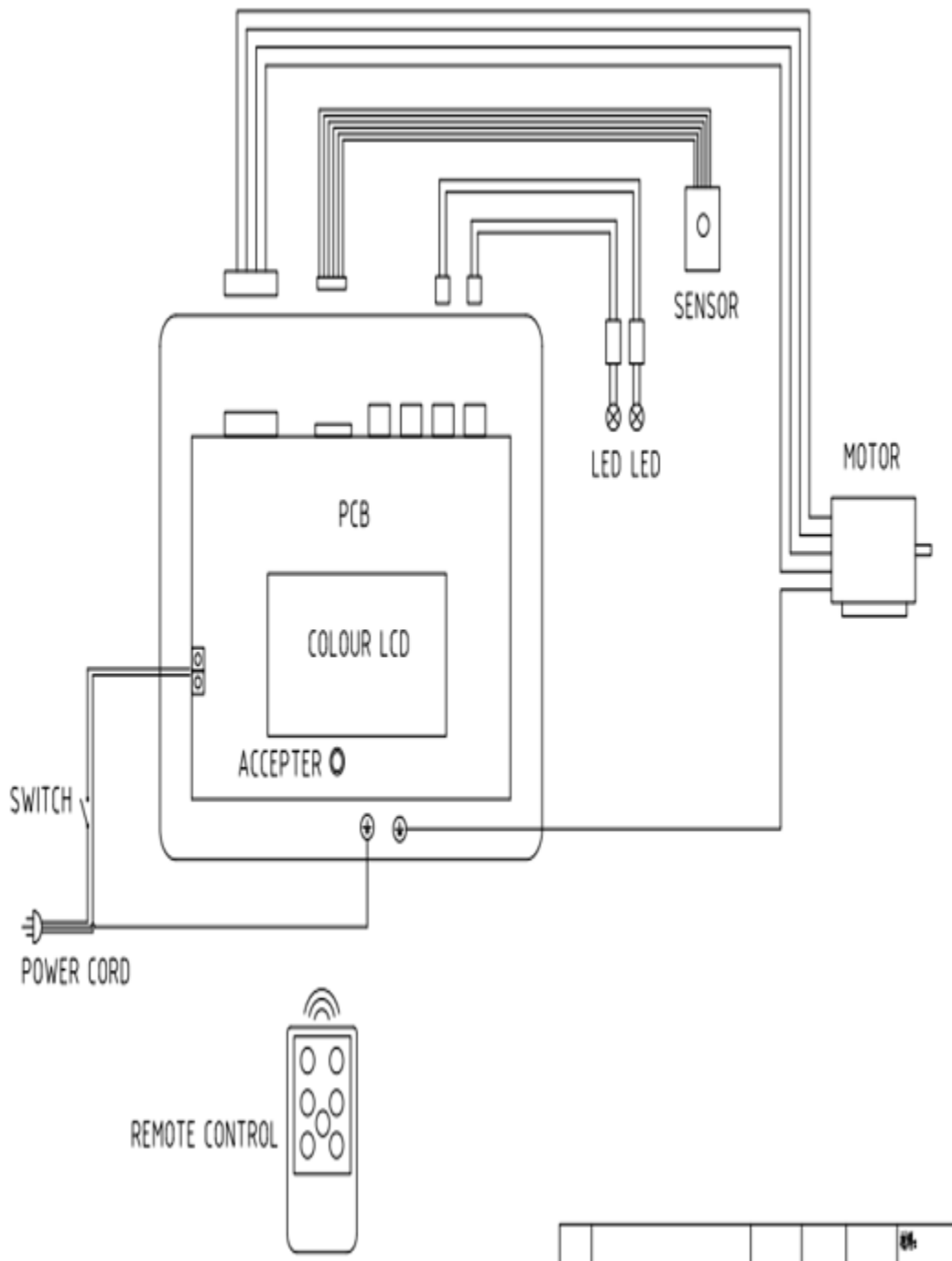


10-2000 PART NUMBERS

PART S	REFERENCE	DESCRIPTION	SPECIFICATION	QTY.
1	101000-1	Cross pan head screw	GB/T818/M4×12	23.000
2	101000-2	Grip		4.000
3	101000-3	Removable cover		1.000
4	101000-4	Fixed cover		1.000
5	101000-5	Cross pan head screw	GB/T818/M5×12	4.000
6	101000-6	Face label	贴显示屏位置	1.000
7	101000-7	Power switch	10A/125V	1.000
8	101000-8	Cable gland	6N-4	1.000
9	101000-9	Power cable	DLC3KEE9S-A-BPS	1.000
10	101000-10	Wiring	ZH1.5	1.000
11	101000-11	fan frame		1.000
12	101000-12	Tooth washer	GB/T862.1/4	2.000
13	101000-13	Spring washer	GB/T93/4	6.000
14	101000-14	Hex nut	GB/T6170/M4	18.000
15	101000-15	Foaming strip		0.440
16	101000-16	Dust sensor	PM2.5	1.000
17	101000-17	buckle		1.000
18	101000-18	PCB		1.000
19	101000-19	Cable	DL1EHB-H-B-P	1.000
20	101000-20	Frame		1.000
21	101000-21	Hex nut	GB/T6170/M8	5.000
22	101000-22	Hex nut	GB/T6170/M5	4.000
23	101000-23	Capacitor	CBB60/450VAC5060HZ/30uF	1.000
24	101000-24	Closed end terminal	CE-1/Φ2.4	2.000
25	101000-25	Wiring	CH3.96	2.000
26	101000-26	LED driver	AC85-230V/DC9-20V0.3A	2.000
27	101000-27	Self-tapping screw	GB/T845/ST3.5×9.5/F	4.000
28	101000-28	HEPA filter	490×592×50/H12(The optional parts)	1.000
29	101000-29	Filter frame		1.000
30	101000-30	Bracket		2.000
31	101000-31	Primary filter	490×592×46/G4	1.000
32	101000-32	Medium efficiency filter	490×592×22-8P-F9	1.000
33	101000-33	Hexagon socket head screw	GB/T70.2/M6×12	18.000
34	101000-34	Eyebolt	M8×30	4.000
35	101000-35	Cross pan head screw	GB/T818/M8×12	4.000
36	101000-36	Shell		1.000

37	101000-37	Draught fan	120V/60HZ/250W	1.000
38	101000-38	Primary filter	490×592×22/G4	1.000
39	101000-39	Rubber pad		6.000
40	101000-40	Cable clamp		3.000
41	101000-41	Filter frame		1.000
42	101000-42	Foamed strip	5×25×10	0.46
43	101000-43	Hexagon socket head screw	GB/T70.2/M6×20	6.000
44	101000-44	Spring washer	GB/T93/6	6.000
45	101000-45	Flat washer	GB/T97.1/6	6.000
46	101000-46	LED downlight	5W	2.000
47	101000-47	Wiring	SM2.54	1.000
48	101000-48	Remote control		1.000

10-2000 M1 Wiring Diagram:



Warranty Statement and Policy

Commercial General™ (Green Line) & Excalibur™ (Black Line) branded products: 3 -YEAR LIMITED WARRANTY All products are warranted for a period of 3 years (36 months) from the date of purchase. General™ agrees to repair or replace any part or component which upon examination, proves to be defective in either workmanship or material or parts and labor to the original purchaser during this 3-year warranty period, subject to the “conditions and exceptions” as listed below. Repairs made without the written consent of General will void the warranty

EXTEND YOUR WARRANTY: Register your new General™ or Excalibur™ within 60 days of your purchase and get an extended 2 years, for a total of 5 years, of warranty coverage.

Go to www.general.ca/warranty/registration

DISCLAIMER: Because we are committed to making constant improvements, General™ reserves the right to make changes to components, parts or features of this unit as deemed necessary, without prior notice and without obligation to install any such changes on previously delivered units. Reasonable care is taken at the factory to ensure that the specifications and information in this manual corresponds with that of the unit with which it was supplied.

TO FILE A CLAIM: To file a claim under our Standard 3 -year Limited Warranty, all defective parts, components or machinery must be returned freight or postage prepaid to General™, or to a nearby distributor, repair center or other location designated by General™. For further details call our service department at 1-844-877-5234 or info@gipowerproducts.com Along with the return of the product being claimed for warranty, a copy of the original proof of purchase and a “letter of claim” must be included (a warranty claim form can also be used and can be obtained, upon request, from General™ or an authorized distributor) clearly stating the model and serial number of the unit (if applicable) and including an explanation of the complaint or presumed defect in material or workmanship.

CONDITIONS AND EXCEPTIONS: This coverage is extended to the original purchaser only. Prior warranty registration is not required but documented proof of purchase, i.e. a copy of original sales invoice or receipt showing the date and location of the purchase as well as the purchase price paid, must be provided at the time of claim. Warranty does not include failures, breakage or defects deemed after inspection by General™ to have been directly or indirectly caused by or resulting from; improper use, or lack of or improper maintenance, misuse or abuse, negligence, accidents, damage in handling or transport, or normal wear and tear of any generally considered consumable parts or components. Repairs made without the written consent of General™ will void all warranty. This five-year warranty does not cover products used for commercial, industrial or educational purposes. The warranty term for these claims will be limited to a two-year period.

