

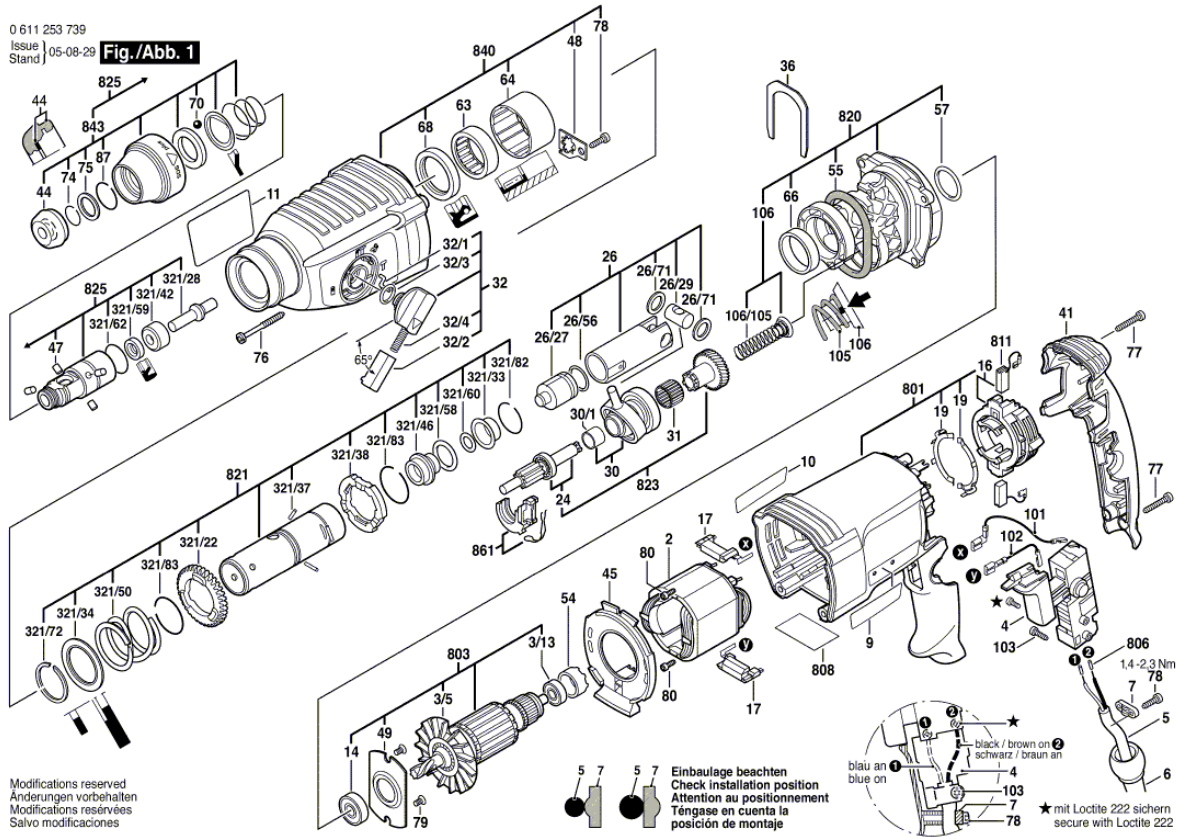


0 611 253 739
UNIVERSAL ROTARY HAMMER 11253 VSR

24.10.2005
 22:43:15

0 611 253 739
 Issue | 05-08-29
 Stand |

Fig./Abb. 1



Modifications reserved
 Änderungen vorbehalten
 Modifications réservées
 Salvo modificaciones

Einbaulage beachten
 Check installation position
 Attention au positionnement
 Téngase en cuenta la posición de montaje

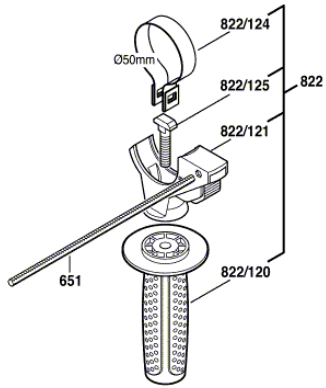
blau an
 blue on
 black / brown on
 schwarz / braun an
 ★ mit Loctite 222 sichern
 secure with Loctite 222

Item	Quantity	Order No.	Designation	Price group	Page
2	1	1 614 220 177	FIELD \ 115-120V		1
3/5	1	1 616 610 094	FAN		1
3/13	1	1 610 905 025	DEEP-GROOVE BALL BEARING \ DIN 625-607-2Z/C3	19	1
4	1	1 617 200 558	ON-OFF SWITCH		1
5	1	2 604 460 239	MAINS CONNECTION CABLE \ USA/CDN 2,70m 2 x 0,82 SJ18/2		1
6	1	1 600 703 034	GROMMET		1
7	1	2 601 035 001	CABLE CLIP	11	1
9	1	1 611 110 X63	MANUFACTURER'S NAMEPLATE		1
10	1	1 611 110 X64	MANUFACTURER'S NAMEPLATE		1
11	1	1 611 110 X62	WARNING PLATE		1
14	1	1 610 905 006	DEEP-GROOVE BALL BEARING	25	1
16	1	1 614 336 061	BRUSH PLATE	29	1
17	2	1 614 465 012	ADAPTER MODULE	14	1
19	2	1 611 329 025	SWITCH CONTACT		1
24	1	1 617 000 556	TOOTHED SHAFT		1
26	1	1 617 000 557	HAMMER PISTON		1
26/27	1	1 610 311 018	STRIKER		1
26/29	1	1 613 105 012	PISTON PIN	15	1
26/56	1	1 610 210 187	O-RING	11	1
26/71	2	1 610 101 011	SHIM RING	11	1
30	1	1 615 819 028	DRIVE END SHIELD		1
30/1	1	1 610 202 024	FRICTION BEARING		1
31	1	1 610 913 016	NEEDLE-ROLLER ASSEMBLY		1
32	1	1 612 026 037	CLAMP HANDLE \ BLACK	24	1
32/1	1	1 614 690 002	DRIVER PIN		1
32/2	1	1 612 026 035	SWITCH BUTTON \ RED	11	1
32/3	1	1 610 210 046	O-RING \ 2,7x10,5 MM	11	1
32/4	1	1 614 611 006	COMPRESSION SPRING	15	1
36	1	1 611 016 003	HOLDING PLATE	12	1
41	1	1 615 500 343	HOUSING COVER \ BLUE		1
44	1	1 610 508 047	PROTECTIVE CAP		1
45	1	1 610 522 013	AIR-DEFLECTOR RING		1
47	4	1 613 100 030	ROLLER	14	1
48	1	1 611 098 008	TAB WASHER		1
49	1	1 615 700 044	END SHIELD	12	1
54	1	1 610 502 012	RUBBER BUSHING	10	1
55	1	1 610 290 079	SEAL RING	15	1
57	1	1 610 210 068	O-RING	11	1
63	1	1 610 910 063	NEEDLE BUSHING \ Ø30xØ37x12 MM	18	1
64	1	1 610 390 053	BUSHING		1
66	1	1 610 202 021	FRICTION BEARING		1
68	1	1 610 283 036	RADIAL-LIP-TYPE OIL SEAL		1
70	1	1 903 230 013	BALL \ DIN 5401-Ø7MM-III-ST	10	1
74	1	1 614 601 027	SNAP RING	10	1
75	2	1 610 101 629	RETAINING WASHER	10	1
76	4	1 613 435 022	THREAD-FORMING TAP. SCREW	10	1
77	3	2 914 201 709	TORX OVAL-HEAD SCREW \ 4x25-ST-N67F 821 48	10	1

78	3	2 914 201 705	TORX OVAL-HEAD SCREW \ DIN 4756-4x16-T20	10	1
79	2	1 613 435 023	THREAD-FORMING TAP. SCREW	10	1
80	2	1 613 435 007	RECESSED-HEAD SCREW \ DIN 7981-ST3,5x9,5-F		1
87	1	2 916 540 012	SNAP RING \ DIN 7993-A22	13	1
101	1	1 614 449 014	CONNECTING CABLE	12	1
102	1	1 614 449 015	CONNECTING CABLE	12	1
103	1	2 914 201 664	TORX OVAL-HEAD SCREW \ C Tx10 2,9x9,5 DIN 7981	10	1
106	1	1 614 611 022	FRICTION BEARING		1
106/105	1	1 614 611 021	COMPRESSION SPRING		1
321/22	1	1 616 312 004	CYLINDRICAL GEAR		1
321/28	1	1 613 124 078	STRIKER PIN		1
321/33	1	1 610 590 014	HOLDING JACKET		1
321/34	1	1 610 190 049	SUPPORTING DISC	12	1
321/37	3	1 613 100 019	STRAIGHT PIN \ DIN6325-2,5x12-RIKO	11	1
321/38	1	1 610 190 048	CATCH DISK		1
321/42	1	1 610 290 081	THRUST RING		1
321/46	1	1 610 390 051	GUIDE BUSHING		1
321/50	1	1 614 611 020	COMPRESSION SPRING		1
321/58	1	1 610 210 178	O-RING		1
321/59	1	1 610 283 035	RADIAL-LIP-TYPE OIL SEAL		1
321/60	1	1 610 210 176	O-RING		1
321/62	1	1 610 210 179	O-RING		1
321/72	1	1 604 601 027	SNAP RING	10	1
321/82	1	1 614 601 034	SNAP RING		1
321/83	2	1 604 601 028	SNAP RING		1
651	1	1 613 001 009	DEPTH-GAUGE \ SW 6x210 MM		2
801	1	1 617 000 V33	MOTOR HOUSING		1
803	1	1 617 000 V31	ARMATURE WITH FAN		1
808	1	1 601 106 999	NAMEPLATE \ 26x52 MM	15	1
811	1	1 617 000 525	CARBON-BRUSH SET	23	1
820	1	1 617 000 562	INTERMEDIATE FLANGE		1
821	1	1 617 000 564	TUBE		1
822	1	1 612 025 057	AUXILIARY HANDLE \ BLACK		2
822/120	1	1 612 025 058	AUXILIARY HANDLE \ M8 \ BLACK		2
822/121	1	1 618 040 083	SUPPORT CLAMP		2
822/124	1	1 611 316 021	CLAMPING BAND \ Ø 50 MM		2
822/125	1	1 613 490 002	T-HEAD BOLT \ M 8x40 MM	13	2
823	1	1 617 000 579	TOOTHED SHAFT		1
825	1	1 617 000 580	TOOL HOLDING FIXTURE		1
840	1	1 617 000 581	GEAR HOUSING		1
843	1	1 617 000 582	PROTECTION SLEEVE		1
861	1	1 615 820 097	SWITCHING ELEMENT		1

0 611 253 739
Issue | 05-08-29
Stand |

Fig./Abb. 2



Modifications reserved
Änderungen vorbehalten
Modifications réservées
Salvo modificaciones

0 611 253 739
 Issue | 05-08-29
 Stand |

Ausrastmoment min. 20 Nm - 28 Nm
 Slipping point of clutch min. 20 Nm - 28 Nm

Bei 18 Nm und weniger - Kupplung ersetzen!
 By 18 Nm and less - replace slipping clutch!

★ mit Loctite 222 sichern
 secure with Loctite 222

Maße in mm
 Dimensions in mm
 Cotes en mm
 Medidas en mm

Änderungen vorbehalten
 Modifications reserved
 Modifications réservées
 Salvo modificaciones

