



M18

Brushless 7-1/4" Circular Saw



Milwaukee Brushless 7-1/4" Circ Saw

Launch: July 2018

Power

Up To
40%
More Power
Than Brushed

Run -Time

Up To
350
Cuts Per
Charge

Durability



- **Power**
 - Milwaukee built brushless motor creates more power than brushed motors
 - Deliver 5,000 RPM of smooth, powerful cutting
- **Run-Time**
 - More efficient use of energy
 - Up to 350 cuts in 2x4 on a 5.0ah pack
 - Compatible with all M18 batteries
- **Corded Capacity**
 - Common blade size – easy to find blades
 - Greater capacity than most AC saws
 - 2-1/2" depth of cut @ 90°
 - 1-7/8" depth of cut @ 45°
- **Durability**
 - No wearable parts in the motor results in longer life
 - REDLINK electronics protection
 - Magnesium upper and lower guard
 - High grade aluminum shoe for accurate cuts





Milwaukee Brushless 7-1/4" Circ Saw

Users & Applications

Key Users

Primary



Secondary

RESIDENTIAL



RESIDENTIAL



RESIDENTIAL



Core Construction Types

Residential New Construction



Commercial New Construction



Multi Family New Construction



Residential Remodel





Milwaukee Brushless 7-1/4" Circ Saw

User Needs



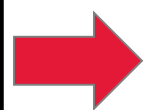
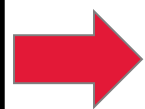
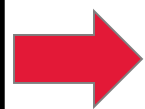
Power to cut all common materials



Enough run-time to stay productive

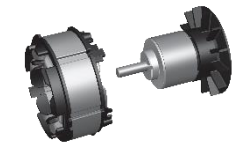


Jobsite durable tools



Milwaukee Solutions

Brushless Motor delivers up to 30% more power



Milwaukee Built Brushless Motor

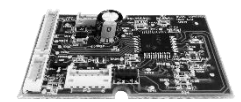
5,000 RPM delivers fast, smooth cutting

Up to 350 Cuts per Charge



Brushless Motor + Redlithium XC5.0

Brushless Motor and REDLINK Electronics



Magnesium Guards Aluminum Shoe





Milwaukee Brushless 7-1/4" Circ Saw Segmentation

STEP USERS UP TO BETTER PERFORMANCE

M18 FUEL



- **15A Corded Power**
- **Faster than Corded**
- **Unmatched Run-Time**

M18
BRUSHLESS



- **Increased Power**
- **Increased Speed**
- **Increased Run-Time**

M18



- **Class leading power**
- **Class leading run-time**

Convenience

Corded Replacement

PERFORMANCE



Milwaukee Brushless 7-1/4" Circ Saw

Product Walk Around

REDLINK Intelligence

Communication between battery and motor for maximum power and efficiency

Rafter Hook

Easy storage when working on ladders or in rafters

M18 Redlithium XC5.0

Deliver up to 350 cuts per charge on a single battery

Brushless Motor

Increased power and efficiency over brushed motors

Vac Adaptor Port

Easily connect a vac adaptor to manage dust during cuts

7-1/4" Blade

Increased cutting capacity over brushed most brushed and AC saws

Magnesium Guards

Superior durability from drops and abuse





June July Aug Sept Oct Nov Dec Jan

2731
Stops
Shipping
6/29

New FUEL Kits Launch
7/2

Brushless Launch
7/19

FUEL
Bare
Tools
Launch
1/1/19



- **How is this saw different than the FUEL Circular Saw?**
 - Power, Speed and Run-time. FUEL is designed to be the highest performing tool in the cordless circular saw space. The Brushless 7-1/4" saw will not provide that level of performance. It does however still deliver the performance to keep users that may not rely on their circular saw day in and day out productive.
- **Does this come with a dust chute?**
 - Yes, the bare tool and kit both come with the vac adaptor attachment.
- **Can this use the new HD12.0 battery?**
 - Yes, this saw is compatible with the HD12.0 and all other M18 batteries.