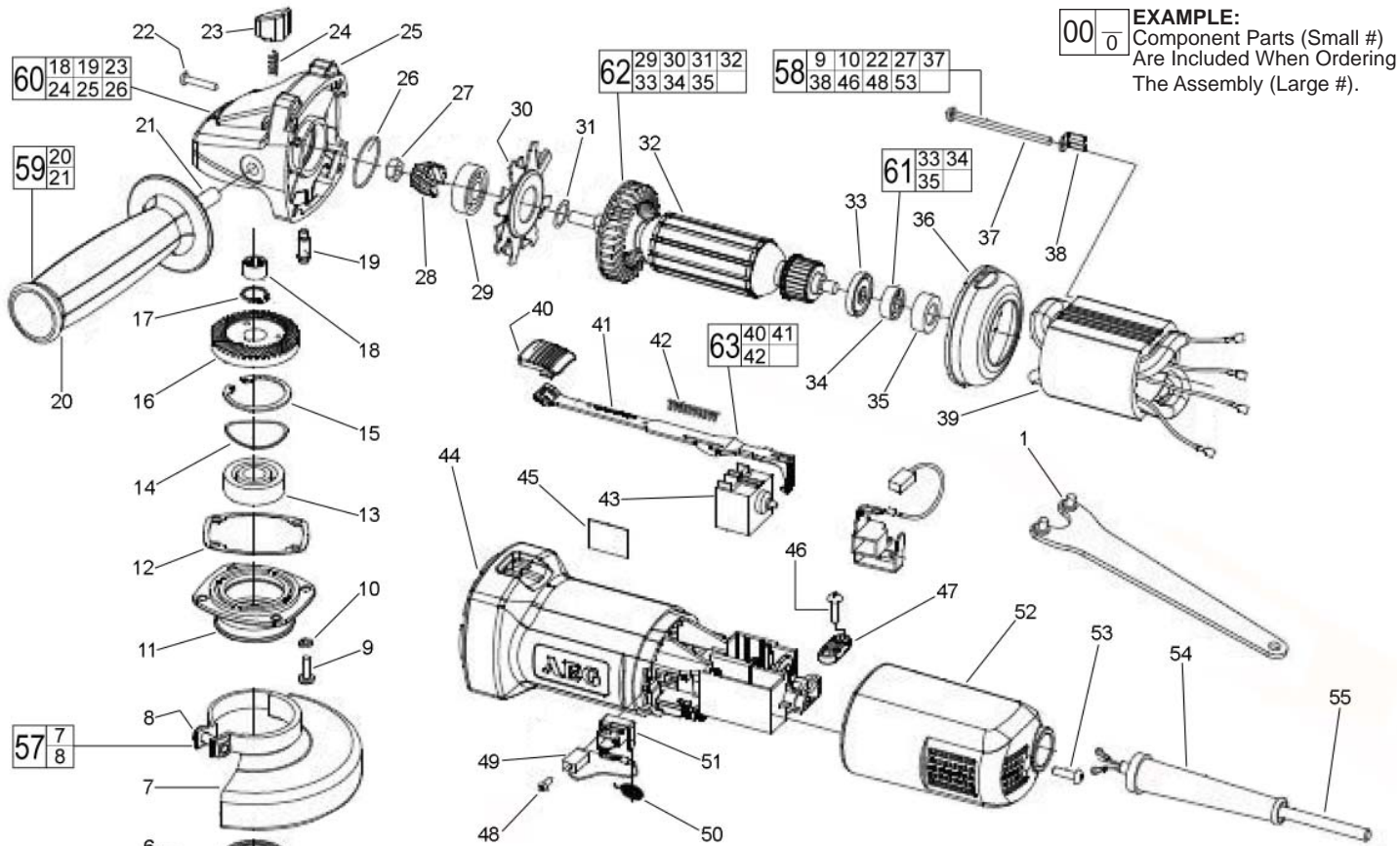


SERVICE PARTS LIST

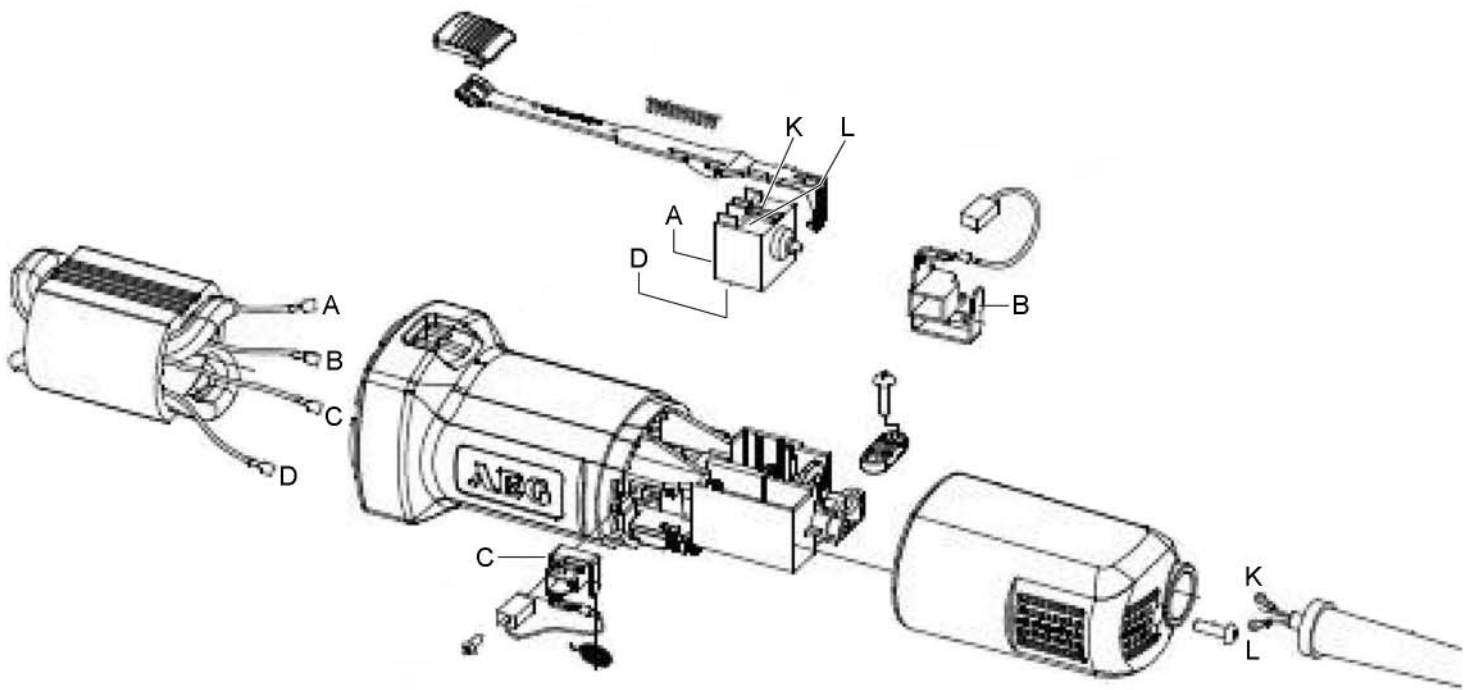
SPECIFY CATALOG NO. AND SERIAL NO. WHEN ORDERING PARTS		REVISED BULLETIN	DATE
ANGLE GRINDER			Jan. 2011
CATALOG NO.	AWS-6	SERIAL NUMBER	A001A
		WIRING INSTRUCTION See page 2	



EXAMPLE:
Component Parts (Small #)
Are Included When Ordering
The Assembly (Large #).

FIG.	PART NO.	DESCRIPTION OF PART	NO. REQ.
1	A2644-0015	Flange Wrench	(1)
2	A2415-0015	Inner Flange	(1)
3	A2415-0020	Outer Flange	(1)
4	-----	Spindle	(1)
5	-----	3 x 3 x 10 Key	(1)
6	-----	Dust Cover	(1)
7	-----	Guard	(1)
8	-----	M5 x 20 Screw	(1)
9	-----	M4 x 12 Screw	(4)
10	-----	Spring Washer	(4)
11	-----	Bearing Flange	(1)
12	-----	Gasket	(1)
13	-----	Ball Bearing	(1)
14	-----	Wave Washer	(1)
15	-----	Retaining Ring	(1)
16	-----	Bevel Gear	(1)
17	-----	Retaining Ring	(1)
18	-----	Needle Bearing	(1)
19	-----	Locking Pin	(1)
20	-----	Side Handle	(1)
21	-----	M8 x 23 Bolt	(1)
22	-----	M4 x 24 ST Screw	(4)
23	-----	Locking Button	(1)
24	-----	Locking Spring	(1)
25	-----	Gearcase	(1)
26	-----	Washer	(1)
27	-----	M6 Nut	(1)
28	-----	Pinion Gear	(1)

FIG.	PART NO.	DESCRIPTION OF PART	NO. REQ.
29	-----	Ball Bearing	(1)
30	-----	Bearing Plate	(1)
31	-----	Washer	(1)
32	-----	Armature	(1)
33	-----	Washer	(1)
34	-----	Ball Bearing	(1)
35	-----	Bearing Seating	(1)
36	A0302-0010	Baffle	(1)
37	-----	M4 x 70 ST Screw	(1)
38	-----	Field Plate	(1)
39	A3703-0010	Service Field	(1)
40	-----	Switch Button	(1)
41	-----	Switch Bar	(1)
42	-----	Switch Spring	(1)
43	A1032-0015	Switch	(1)
44	A0315-0020	Motor Housing	(1)
45	A3104-0010	Service Nameplate	(1)
46	-----	M4 x 14 ST Screw	(2)
47	A2338-0015	Cord Clamp	(1)
48	-----	M3 x 10 ST Screw	(2)
49	A0907-0015	Carbon Brush	(2)
50	A2200-0010	Brush Spring	(2)
51	A0909-0015	Brush Holder	(2)
52	A0314-0020	Handle Shell	(1)
53	-----	M4 x 12 ST Screw	(4)
54	A2531-0010	Cord Protector	(1)
55	A0925-0020	Power Cord	(1)
56	A1112-0015	Pinion and Spindle Assembly	(1)
57	A2424-0015	Guard Assembly	(1)
58	A0129-0010	Fastener Kit	(1)
59	A2335-0020	Side Handle Assembly	(1)
60	A0405-0020	Gearcase Assembly	(1)
61	A2101-0015	Bearing Assembly	(1)
62	A3603-0010	Service Armature	(1)
63	A0331-0010	Slide Trigger	(1)



Black wires 'A' and 'D'
from field to bottom of switch

Black wire 'B' from field
to right brush holder



White wire 'K' and black wire 'L'
from power cord to top of switch

Black wire 'C' from field to
left brush holder

