

SETUP & OPERATION MANUAL

FEATURES

- All single phase models are equipped with totally enclosed, fan cooled, permanently lubricated motors.
- Heavy-duty motor design with a continuous duty rating for industrial applications.
- Heavy-duty base, mounted on four swivel casters for total mobility and stability.
- Precision spin-balanced aluminum impeller for smooth operation, minimal noise and to reduce the risk of sparking.
- All models are equipped with 2 micron filter bags. (Not included on "CF" canister filter model)
- Quick-release bag clamps with metal straps on all models.
- Safety switch with key, prevents unit from being started when key is removed.
- Heavy-duty collection bags made from extra thick, transparent, recyclable plastic.

SPECIFICATIONS

INLET DIAMETERS

- (1) 6" (152 mm)
- (2) 4" (102 mm)

AIRFLOW CAPACITY

1550 CFM

BLOWER WHEEL DIAMETER

12-3/4" (324 mm)

SOUND RATING

80 TO 90 dB

BAG DIAMETER

20" (508 mm)

BAG CAPACITY

42 GAL (190.9 L.)

STATIC PRESSURE

11-1/4" OF WATER

MOTOR

M1: 2 HP, 120 V, 1 Ph, 15A
M3: 2 HP, 600 V, 3 Ph, 2.6 A

OVERALL DIMENSIONS (L x W x H)

39 3/8" x 31 1/2" x 74 3/4"
(1000 x 800 x 2000 mm) - #10-110

39 3/8" x 31 1/2" x 66 3/4"
(1000 x 800 x 1746 mm) - #10-110CF

WEIGHT

132 LBS (60 kg) - #10-110
141 LBS (64 kg) - #10-110CF

2 HP DUST COLLECTOR



MODEL

#10-110 M1

#10-110CF M1





GENERAL® INTERNATIONAL

8360 Champ-d'Eau, Montreal (Quebec) Canada H1P 1Y3
Telephone (514) 326-1161 • Fax (514) 326-5555 • www.general.ca

THANK YOU for choosing this General® International model 10-110/10-110CF Dust collector. This dust collector has been carefully tested and inspected before shipment and if properly used and maintained, will provide you with years of reliable service. To ensure optimum performance and trouble-free operation, and to get the most from your investment, please take the time to read this manual before assembling, installing and operating the unit.

The manual's purpose is to familiarize you with the safe operation, basic function, and features of this dust collector as well as the set-up, maintenance and identification of its parts and components. This manual is not intended as a substitute for formal woodworking instruction, nor to offer the user instruction in the craft of woodworking. If you are not sure about the safety of performing a certain operation or procedure, do not proceed until you can confirm, from knowledgeable and qualified sources, that it is safe to do so.

Once you've read through these instructions, keep this manual handy for future reference.

GENERAL® INTERNATIONAL WARRANTY

All component parts of General® International machinery are carefully tested and inspected during all stages of production, and each machine is thoroughly inspected upon completion of assembly. Because of our commitment to quality and customer satisfaction, General® International agrees to repair or replace, within a period of 24 months from date of purchase, any genuine part or parts which, upon examination, prove to be defective in workmanship or material. In order to obtain this warranty, all defective parts must be returned freight pre-paid to General® International Mfg. Co., Ltd. Repairs attempted without our written authorization will void this warranty.

Disclaimer: The information and specifications in this manual pertain to the unit as it was supplied from the factory at the time of printing. Because we are committed to making constant improvements, General® International reserves the right to make changes to components, parts or features of this unit as deemed necessary, without prior notice and without obligation to install any such changes on previously delivered units. Reasonable care is taken at the factory to ensure that the specifications and information in this manual corresponds with that of the unit with which it was supplied. However, special orders and

"after factory" modifications may render some or all information in this manual inapplicable to your machine. Further, as several generations of this dust collector and several versions of this manual may be in circulation, if you own an earlier or later version of this unit, this manual may not depict your machine exactly. If you have any doubts or questions contact your retailer or our support line with the model and serial number of your unit for clarification.

GENERAL® INTERNATIONAL WARRANTY

All component parts of General® International and Excalibur by General International ® products are carefully inspected during all stages of production and each unit is thoroughly inspected upon completion of assembly.

Limited Lifetime Warranty

Because of our commitment to quality and customer satisfaction, General® International agree to repair or replace any part or component which upon examination, proves to be defective in either workmanship or material to the original purchaser for the life of the tool. *However, the Limited Lifetime Warranty does not cover any product used for professional or commercial production purposes nor for industrial or educational applications. Such cases are covered by our Standard 2-year Limited Warranty only. The Limited Lifetime Warranty is also subject to the "Conditions and Exceptions" as listed below.*

Standard 2-Year Limited Warranty

All products not covered by our lifetime warranty including products used in commercial, industrial and educational applications are warranted for a period of 2 years (24 months) from the date of purchase. General® International agrees to repair or replace any part or component which upon examination, proves to be defective in either workmanship or material to the original purchaser during this 2-year warranty period, subject to the "conditions and exceptions" as listed below.

To file a Claim

To file a claim under our Standard 2-year Limited Warranty or under our Limited Lifetime Warranty, all defective parts, components or machinery must be returned freight or postage prepaid to General® International, or to a nearby distributor, repair center or other location designated by General® International. For further details call our service department at 1-888-949-1161 or your local distributor for assistance when filing your claim.

Along with the return of the product being claimed for warranty, a copy of the original proof of purchase and a "letter of claim" must be included (a warranty claim form can also be used and can be obtained, upon request, from General® International or an authorized distributor) clearly stating the model and serial number of the unit (if applicable) and including an explanation of the complaint or presumed defect in material or workmanship..

CONDITIONS AND EXCEPTIONS:

This coverage is extended to the original purchaser only. Prior warranty registration is not required but documented proof of purchase i.e. a copy of original sales invoice or receipt showing the date and location of the purchase as well as the purchase price paid, must be provided at the time of claim.

Warranty does not include failures, breakage or defects deemed after inspection by General® International to have been directly or indirectly caused by or resulting from; improper use, or lack of or improper maintenance, misuse or abuse, negligence, accidents, damage in handling or transport, or normal wear and tear of any generally considered consumable parts or components.

Repairs made without the written consent of General® International will void all warranty.

Rules for Safe Operation

To help ensure safe operation, please take a moment to learn the machine's applications and limitations, as well as potential hazards. General® International disclaims any real or implied warranty and holds itself harmless for any injury that may result from improper use of its equipment.

1. Do not operate this machine without either a filter bag or canister filter properly installed on the unit.
2. Keep the work area well lit, clean and free of debris.
3. Do not handle the electrical plug with wet hands.
4. Do not use this unit outdoors or near wet surfaces.
5. Always turn on the dust collector before starting the dust producing machine. Always turn off the dust producing machine before turning off the dust collector.
6. Do not vacuum anything that is burning, smoking or smoldering such as cigarettes, matches or hot ashes.
7. Stay alert! Give your work your undivided attention. Even a momentary distraction can lead to serious injury.
8. Fine particulate dust is a carcinogen that can be hazardous to health. Work in well ventilated area and wear eye, ear and respiratory protection devices.
9. Do not wear loose clothing, gloves, bracelets, necklaces, or other jewelry.
10. Do not vacuum or use this dust collector near flammable or combustible liquids, gases, gasoline or other fuels, lighter fluid, cleaners, oil or solvent based paints, natural gas, hydrogen or explosive dusts like coal dust, magnesium dust, grain dust or gun powder.
11. Do not operate this dust collector when tired, distracted or under the effects of drugs, alcohol or any medication that impairs reflexes or alertness.
12. Do not operate the unit until a dust hose is installed onto the hose inlet.
13. Never leave the machine unattended while running or with the power on.
14. To avoid health hazards from vapors or dusts, do not vacuum toxic material.
15. Do not insert hands or fingers or any foreign objects into ventilation inlet and outlet openings.
16. Childproof and tamper proof your shop and all machinery with locks, master electrical switches and switch keys to prevent unauthorized or unsupervised use.
17. Keep children and visitors at a safe distance when the unit is running. Do not permit them to use the machine.
18. Use only recommended accessories. Use of accessories NOT recommended by General® International may result in a risk of injury or damage to the machine.
19. Make sure the unit is properly grounded. If equipped with three-prong plug, it should be plugged into a three-pole receptacle. Never remove the third-prong.
20. Always disconnect the unit from the power source before servicing, performing any maintenance or repairs and when changing bags or hoses, or if the machine will be left unattended.
21. Do not use this dust collector for any purpose other than it is intended use. If used for other purposes, **GENERAL® INTERNATIONAL** disclaims any real or implied warranty and holds itself harmless for any injury, which may result from that use.
22. Clean filters (bags on 10-110 or canisters 10-110CF) on a regular basis and replace as needed.



ELECTRICAL REQUIREMENTS



BEFORE CONNECTING THE MACHINE TO THE POWER SOURCE, VERIFY THAT THE VOLTAGE OF YOUR POWER SUPPLY CORRESPONDS WITH THE VOLTAGE SPECIFIED ON THE MOTOR I.D. NAMEPLATE. A POWER SOURCE WITH GREATER VOLTAGE THAN NEEDED CAN RESULT IN SERIOUS INJURY TO THE USER AS WELL AS DAMAGE TO THE MACHINE. IF IN DOUBT, CONTACT A QUALIFIED ELECTRICIAN BEFORE CONNECTING TO THE POWER SOURCE.

THIS TOOL IS FOR INDOOR USE ONLY. DO NOT EXPOSE TO RAIN OR USE IN WET OR DAMP LOCATIONS.

Plug the dust collector into a proper receptacle. Your power tools should be connected to a dedicated electrical circuit of not less than #14 wire and should be protected with a 15 amp time lag fuse. If an extension cord is needed use only 3 wire cords with 3-prong grounded type plugs and 3-pole receptacles. Consult the chart below for details on selecting an extension cord.

TABLE - MINIMUM GAUGE FOR CORD

AMPERE RATING		VOLTS	TOTAL LENGTH OF CORD IN FEET			
		110 V	25 ft.	50 ft.	100 ft.	150 ft.
MORE THAN	NOT MORE THAN	220 V	50 ft.	100 ft.	200 ft.	300 ft.
AWG						
0	6	→	18	16	16	14
6	10	→	18	16	14	12
10	12	→	16	16	14	12
12	16	→	14	12	-	-

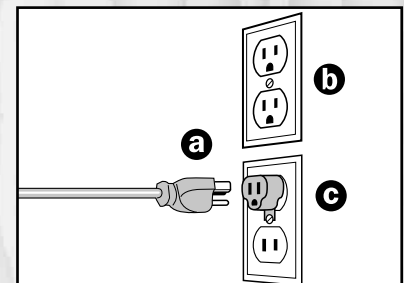


BEFORE CONNECTING THE DUST COLLECTOR TO A POWER SOURCE, MAKE SURE THAT THE ELECTRICAL CURRENT IS OF THE SAME TYPE AS THAT STAMPED ON THE MOTOR NAMEPLATE. ALL ELECTRICAL CONNECTIONS SHOULD HAVE A PROPER CONTACT. NEVER CONNECT THE MACHINE TO A POWER SOURCE OF GREATER OR LOWER VOLTAGE THAN NEEDED. FAILURE TO COMPLY COULD RESULT IN SERIOUS INJURY TO THE USER AND/OR DAMAGE TO THE MACHINE. IF IN DOUBT, CONTACT A QUALIFIED ELECTRICIAN BEFORE CONNECTING TO THE POWER SOURCE.

GROUNDING

This dust collector must be grounded to protect the operator from electrical shock. It has a 3-conductor cord and 3-prong grounded plug **a** to fit a ground-type receptacle **b**. Do not attempt to modify the plug or remove the 3rd prong (grounding pin) from the plug to make it fit into an old 2 hole wall socket or extension cord. If an adaptor is used it must be attached to the metal screw of the receptacle **c**.

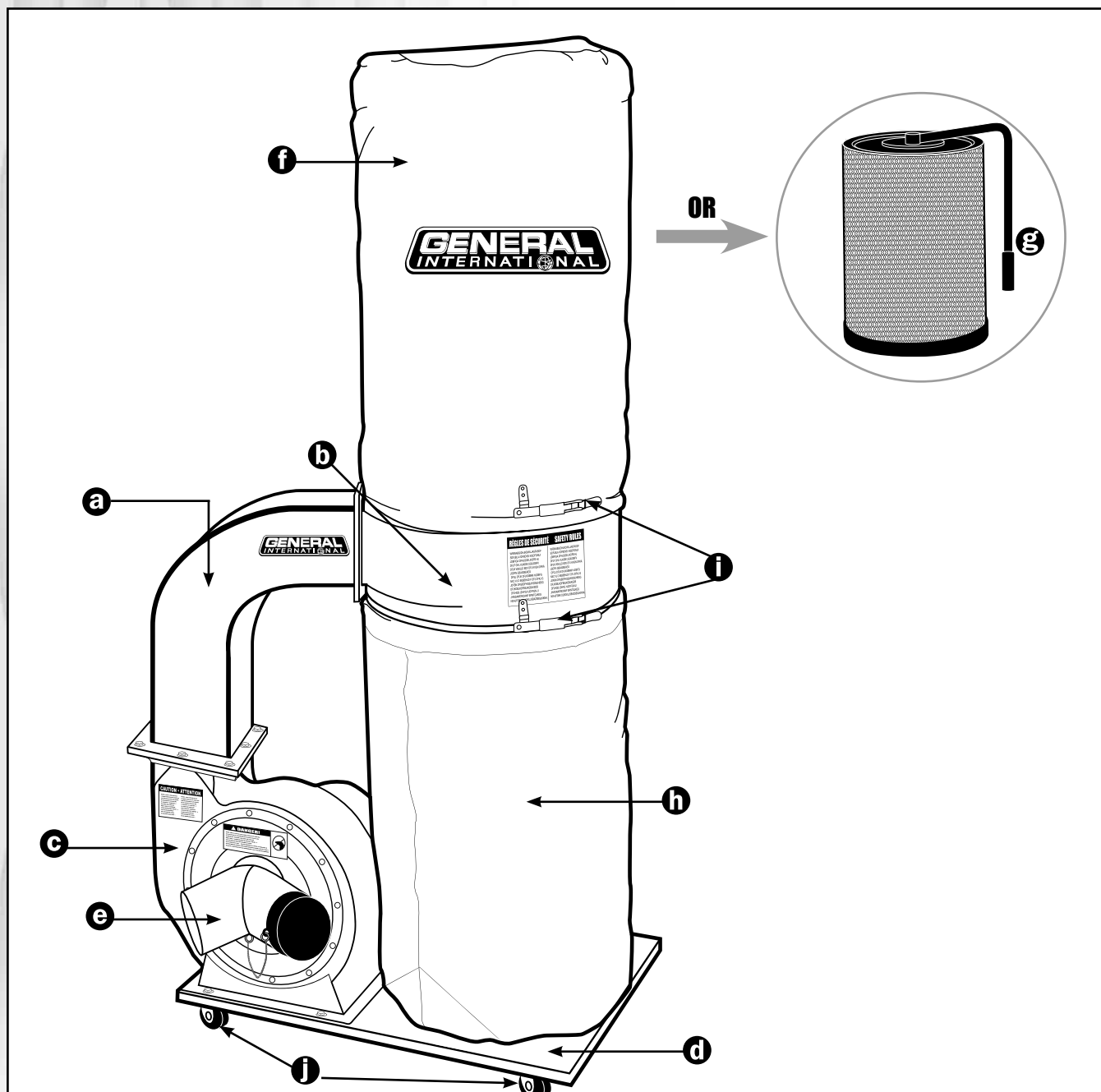
Note: The use of an adaptor plug is illegal in some areas. Check your local codes. If you have any doubts or if the supplied plug does not correspond to your electrical outlet, consult a qualified electrician before proceeding.





2 HP DUST COLLECTOR 10-110 or 10-110CF

IDENTIFICATION OF MAIN PARTS AND COMPONENTS



- a** CONNECTOR
- b** DRUM
- c** COLLECTOR BODY W/MOTOR ASS'Y
- d** BASE PLATE
- e** HOSE INLET ("Y" FITTING)

- f** FILTER BAG (10-110 ONLY)
- g** CANISTER FILTER (10-110CF ONLY)
- h** COLLECTOR BAG
- i** BELT CLAMP (2X)
- j** CASTER (4X)

UNPACKING AND PREPARATION FOR SETUP & ASSEMBLY

SAFETY



USE CAUTION AND WEAR GLOVES WHEN HANDLING METAL PARTS SUCH AS THE BELT CLAMPS, WHICH CAN CUT IF HANDLED CARELESSLY.

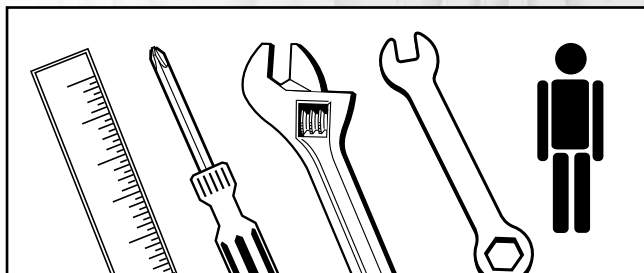


DO NOT OVEREXERT. ARRANGE TO HAVE HELP NEARBY AND READY FOR UNPACKING AND SET-UP.



THE SOUND LEVEL OF THIS MACHINE IS RATED AT APPROXIMATELY 80 TO 90 DB DURING OPERATION. MAKE SURE THAT ADEQUATE HEARING PROTECTION IS USED AND THAT THE OVERALL SOUND LEVEL WITHIN THE WORKING ENVIRONMENT IS TAKEN INTO CONSIDERATION.

ADDITIONAL REQUIREMENTS FOR SETUP & ASSEMBLY



- Flat piece of wood (such as a ruler)
- Medium phillips screwdriver
- 10 & 12 mm open end wrench or adjustable wrench
- 1 extra person for help with lifting

UNPACKING

Carefully unpack and remove the unit and its components from its shipping container and check for missing or damaged items as per the list of contents below.

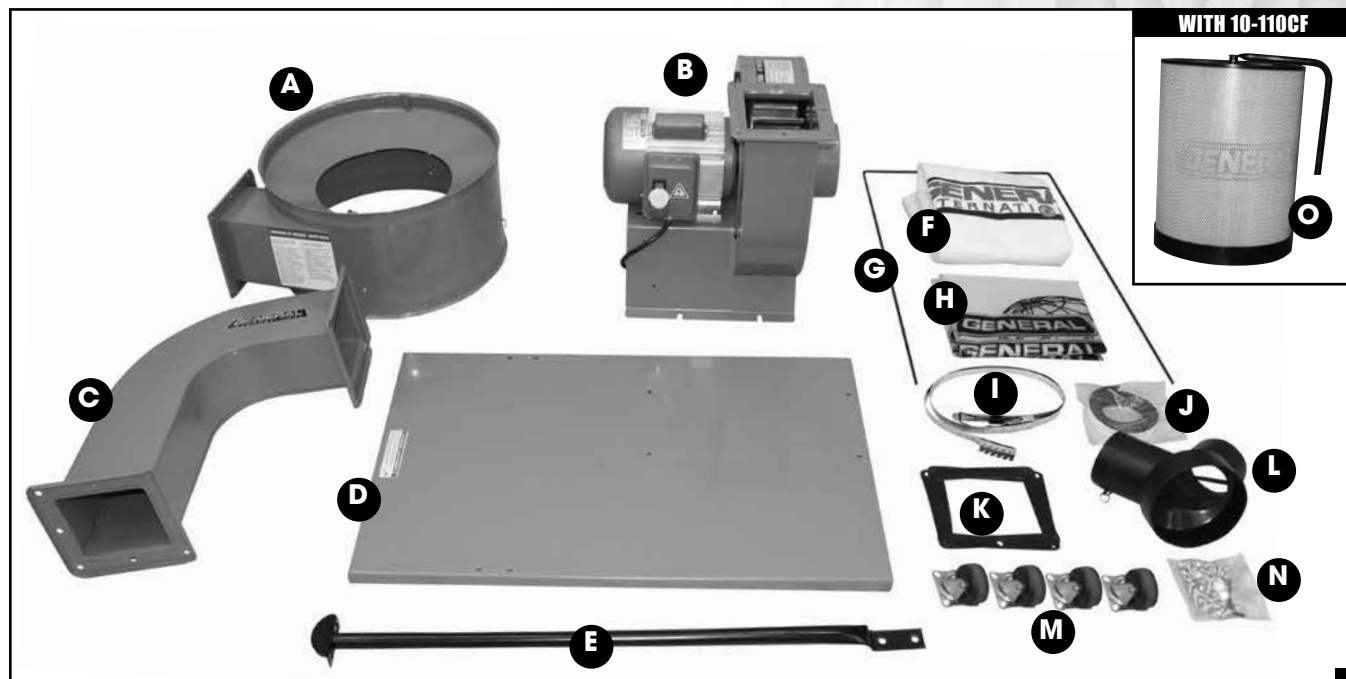
Note: Please report any damaged or missing items to your **GENERAL® INTERNATIONAL** distributor immediately.

LIST OF CONTENTS

	QTY
A- DRUM	1
B- COLLECTOR BODY & MOTOR ASSEMBLY	1
C- CONNECTOR	1
D- BASE PLATE	1
E- VERTICAL SUPPORT ROD	1
F- FILTER BAG (10-110 ONLY)	1
G- BAG HANGER (10-110 ONLY)	1
H- COLLECTOR BAG	1
I- BELT CLAMP	2

LIST OF CONTENTS

	QTY
J- FOAM GASKET	1
K- RUBBER GASKET	2
L- HOSE INLET ("Y" FITTING)	1
M- CASTER	4
N- HARDWARE BAG	1
WRENCH	1
HEX. HEAD BOLT (5/16" X 1/2")	40
CROSS HEAD SCREW (3/16" X 3/8")	1
OPEN END WRENCH 10-12 MM	1
O- CANISTER FILTER (10-110CF ONLY)	1



SHOP PLACEMENT / SPACE CONSIDERATIONS

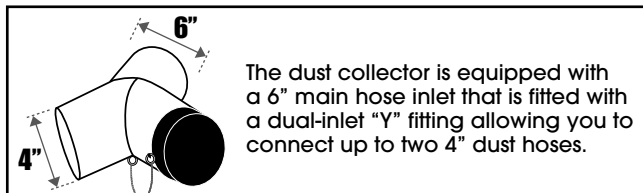
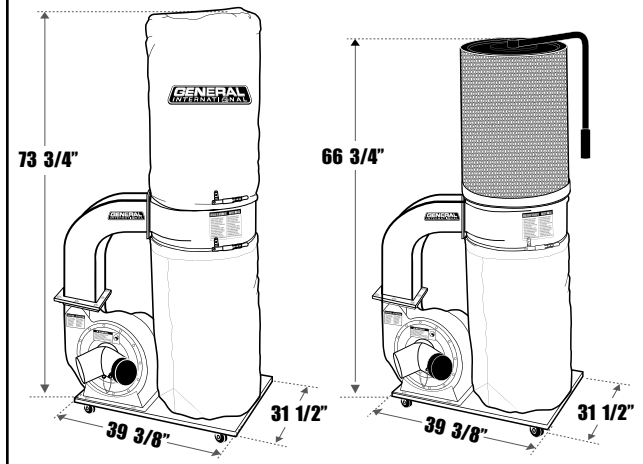
Because each shop situation is unique, the following factors should be taken into consideration when determining and before deciding on the ideal installation to best suit your shop dust collection needs.

The unit should be installed as close to the dust source(s) as possible.

The base of the unit is mounted on casters and as such the dust collector can be moved from one location to another within the shop if a permanent installation location is not practical or desired.

In all cases the unit should be installed on a flat, sturdy and stable surface that is able to support the weight of the unit and its contents, as well as the weight of the operator. The casters should be blocked to prevent the unit from moving when it is in use.

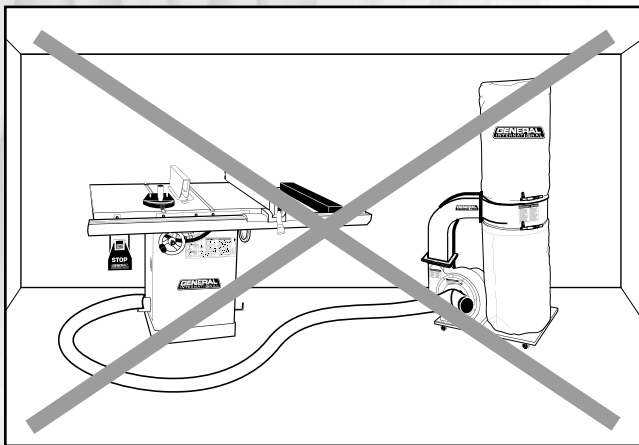
Consider the space requirements for the unit and its use when deciding where to install your dust collector in your shop.



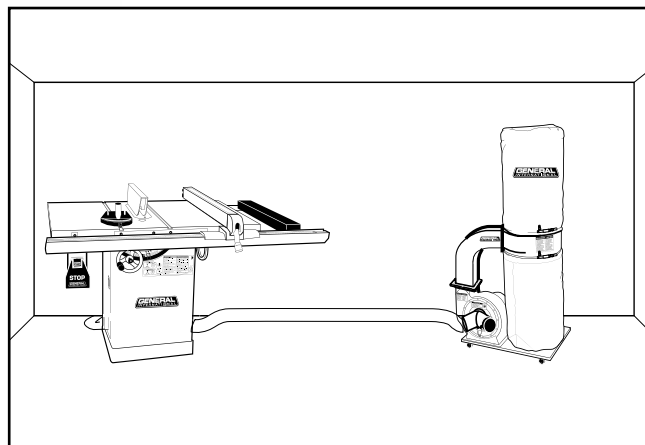
LAYING OUT A PLAN FOR THE PIPING

For permanent installations it is advisable to map out a rough layout of your planned installation starting from the dust collector out to all the machines that you wish to connect to the system. You may vary your layout to suit your specific shop needs and may choose to use metal or plastic ducting, or flexible hose in any combination as suited to your needs.

Note: To avoid accidents as well as damage to ducting or hoses, plan your installation with hoses and ducting running along walls or mounted from above wherever possible. See the accompanying examples of non-recommended and recommended installations.



Wherever possible avoid running hoses and ducting along the floor.



Keep hoses and ducting safely mounted along the walls.



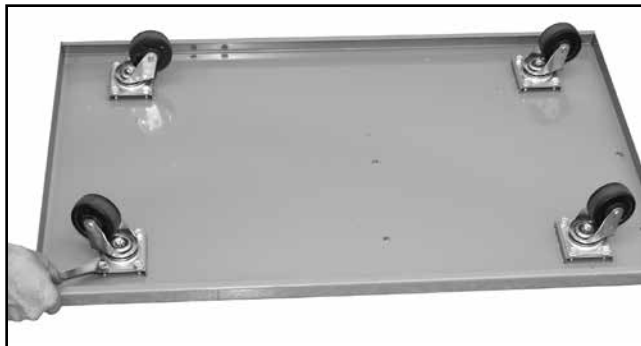
HOSES AND DUCTING RUNNING ALONG THE SHOP FLOOR BETWEEN MACHINERY CAN CAUSE USERS TO TRIP AND LEAD TO SERIOUS INJURY.

ASSEMBLY INSTRUCTIONS



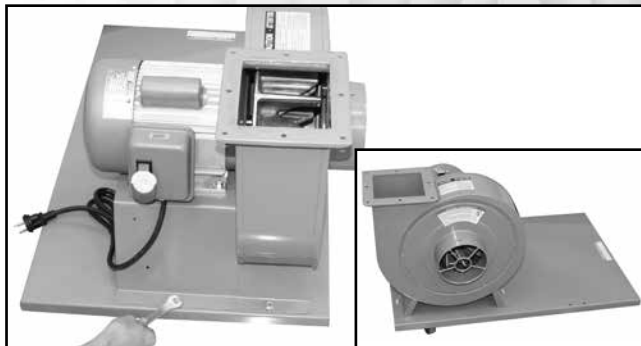
SERIOUS PERSONAL INJURY COULD OCCUR IF YOU CONNECT THE MACHINE TO THE POWER SOURCE BEFORE YOU HAVE COMPLETED THE INSTALLATION AND ASSEMBLY STEPS. DO NOT CONNECT THE MACHINE TO THE POWER SOURCE UNTIL INSTRUCTED TO DO SO.

STEP 1 - INSTALL THE CASTERS



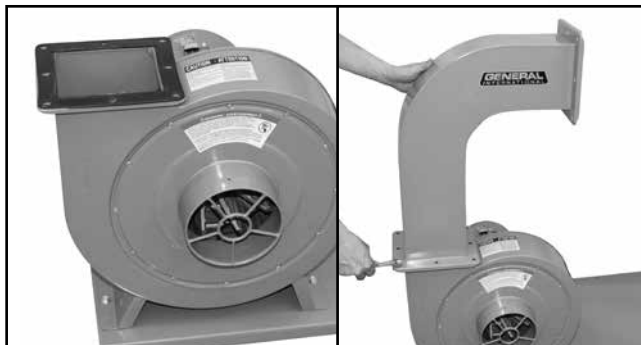
Turn the base plate upside down and using the supplied wrench, attach the 4 casters.

STEP 2 - ATTACH COLLECTOR BODY W/ MOTOR ASSEMBLY



Turn the base plate back over (right side up) and place the collector body with motor assembly on it lining up the mounting holes.

STEP 3 - ATTACH THE CONNECTOR



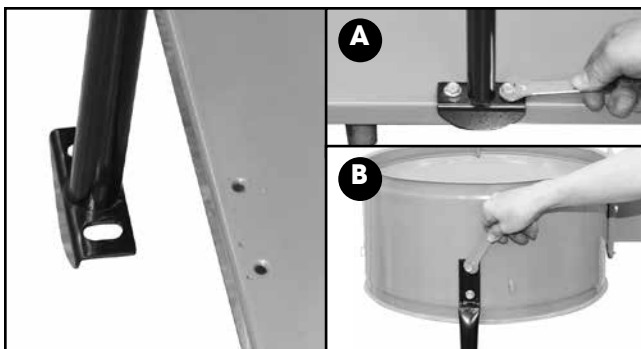
Place one of the rubber gaskets over the opening of the collector body. Take the connector and proceed by placing it over the same opening.

STEP 4 - ATTACH THE DRUM



Use the remaining rubber gasket and place it over the opening of the connector. Take the drum and proceed by placing it over the same opening.

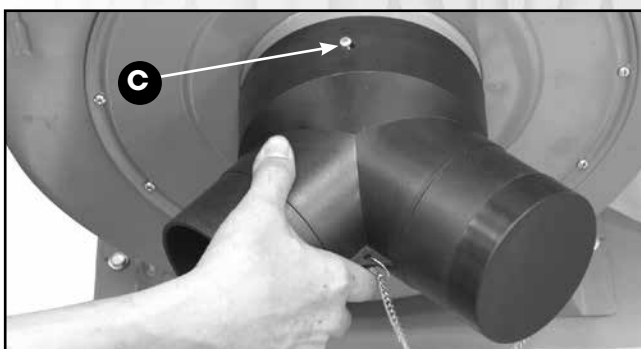
STEP 5 - MOUNT THE SUPPORT ROD TO THE BASE



Note: The vertical support rod has an angled end, **A**, to seat over the lip of the base.

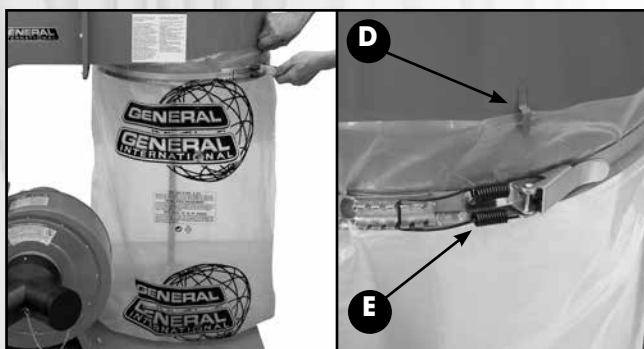
Attach the vertical support rods to the rear of the base plate and to the drum, **B**.

STEP 6 - INSTALL THE HOSE INLET ("Y" FITTING)



Install the hose fitting ("Y" fitting) to the front of the collector body with a pan head screw **C**.

STEP 7 - INSTALL THE COLLECTOR BAG



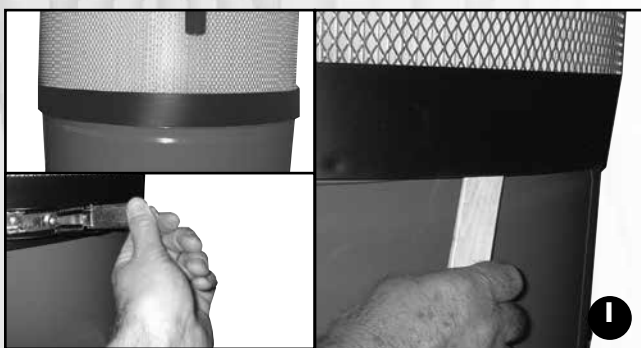
Attach the collector bag by using the hooks on the unit to hold it in place **D**. Use the belt clamp to attach the bag to the lower portion of the drum **E**. Before tightening the clamp, make sure the metal strap is sitting in the groove on the lower portion of the drum to create an airtight seal between the drum and the bag.



USE CAUTION AND WEAR GLOVES WHEN HANDLING METAL PARTS SUCH AS BELT CLAMPS, WHICH CAN CUT IF HANDLED CARELESSLY.

STEP 9 - FIT THE CANISTER FILTER ONTO THE DRUM

(#10-110CF ONLY)

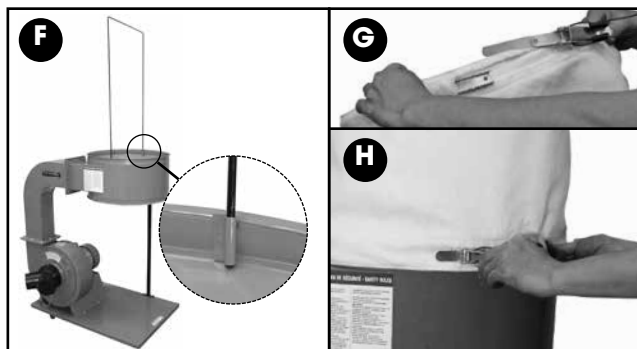


If you have model 10-110 with filter bag skip ahead to step #10.

Fit the canister filter onto the drum as shown and use the belt clamp to hold the canister securely onto the drum.

Tip/Hint: To seat the canister on the rim of the drum, run a flat piece of wood (such as a ruler) between the drum and the black apron on the bottom of the canister **I**.

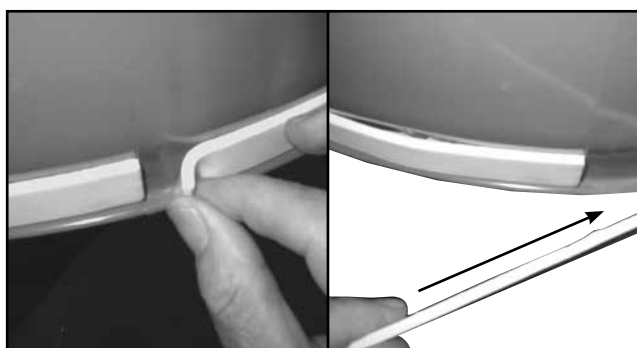
STEP 8 - INSTALL THE FILTER BAG ON THE DRUM (#10-110 only)



If you have model 10-110CF (with canister filter) skip ahead to step #9.

Fit the upper bag support into the holes on the drum **F**. Slip a belt clamp through the opening in the filter bag until it comes out through the hole at the other end **G**. Use the belt clamp to attach the filter bag to the upper portion of the drum **H**. Before tightening the clamp make sure the metal strap is sitting in the groove on the upper portion of the drum to create an airtight seal between the drum and the bag.

STEP 10 - INSTALL THE FOAM GASKET (IF NEEDED)



Basic assembly is now complete and your dust collector is ready to be put into service. Once the unit is hooked up to an appropriate electrical connection, turn on the unit and check for air leaks around the bags or canister filter (model 10-110CF). If there is an air leak, peel off the backing of the adhesive foam gasket and stick it onto the drum, making sure the gasket is sitting in the appropriate groove.

OPERATING INSTRUCTIONS



ALWAYS TURN ON THE DUST COLLECTOR BEFORE STARTING YOUR DUST PRODUCING MACHINE AND ALWAYS STOP THE DUST PRODUCING MACHINE BEFORE TURNING OFF THE DUST COLLECTOR.

BEFORE STARTING

1. To minimize airborne dust make sure that all hoses, fittings and clamps are secure and airtight.
2. For maximum system efficiency, make sure a cover is installed on any unused hose inlet openings.
3. Never operate the machine without the filter bag or cartridge and the collection bag properly installed.



THE SOUND LEVEL OF THIS MACHINE IS RATED AT APPROXIMATELY 80-90 DB DURING OPERATION. MAKE SURE THAT ADEQUATE HEARING PROTECTION IS USED AND THAT THE OVERALL SOUND LEVEL WITHIN THE WORKING ENVIRONMENT IS TAKEN INTO CONSIDERATION.

BASIC INSTRUCTIONS

The **MODEL 10-110 & 10-110CF Dust Collector** has been designed to capture, remove, and collect non-metallic dust and wood dust around the workshop and from woodworking machinery.

ON/OFF SWITCH

The model 10-110 & 10-110CF is equipped with a simple "rocker style" On/Off switch featuring a removable lock out safety key.

To prevent unauthorized use or unintentional start-up, remove the safety key and store it in a safe place whenever the dust collector is not in use.

To start the dust collector, insert the safety key and pull up the switch. To stop the machine, push down on the power switch.



MAKE SURE THE SWITCH IS IN THE "OFF" POSITION BEFORE PLUGGING IN THE POWER CORD.

REMOVE THE SWITCH KEY WHENEVER THE DUST COLLECTOR IS NOT IN USE. PLACE IT IN A SAFE PLACE AND OUT OF THE REACH OF CHILDREN.

MAINTENANCE & SERVICING



MAKE SURE THE SWITCH IS IN THE "OFF" POSITION AND UNPLUG THE UNIT FROM THE POWER SOURCE BEFORE PERFORMING ANY MAINTENANCE.

This machine operates on **220 V single phase power (M1 model only)**; if you suspect any electrical problems call a qualified electrician to do the verification of the electrical circuit or the machine. If you need further help with your dust collector contact your **General® International** distributor or call our **Technical Support at (514) 326-1161**.

- All bearings are sealed and permanently lubricated. No further lubrication is needed.
- Periodically inspect all hardware, fittings and fasteners that may have loosened due to vibration - retighten as needed.
- Keep the outside of the unit clean and wipe off excessive dust or dirt with a dry rag.
- Clean filters (bag on 10-110 or cartridge on 10-110CF) on a regular basis and replace as needed.
- Periodically inspect inside all pipes, fittings, blast gates, and connectors for accumulated dust build-up or other obstructions and clean as needed. Remove sections and vacuum or manually remove debris as needed.
- Check and if necessary replace all damaged parts or components.
- Do not operate with a damaged filter bag or canister - replace damaged filter immediately.
- Periodically inspect the power cord and plug for damage. If necessary replace the power cord and plug at the first signs of visible damage.
- Use only recommended parts and accessories. The use of parts or accessories NOT recommended by GENERAL® INTERNATIONAL may result in a risk of injury or damage to the machine.

CLEANING OR REPLACING THE FILTER BAGS (10-110 only)



TURN THE SWITCH TO THE "OFF" POSITION AND UNPLUG THE UNIT FROM THE POWER SOURCE BEFORE CLEANING OR REPLACING FILTER BAGS OR BEFORE PERFORMING ANY MAINTENANCE.

Tip/Hint: To avoid potentially costly down-time, consider keeping a spare filter bag on-hand and nearby for use if needed.

After a period of time, depending on the frequency of use, the filter bag may become clogged and affect airflow as well the overall efficiency of the unit. Should you notice a drop in the efficiency or performance of the unit, it may be a sign that it is time to clean the filter bag. If so, proceed as follows:

1. Turn off and unplug the machine.
2. Unclip the belt clamp and remove the bag from the machine.
3. Clean the dust from inside the filter bag using a vacuum.
4. For extreme cases, after the initial cleaning with a vacuum, turn filter bag inside out and vacuum a second time, laying the bag on a flat hard surface (such as a table or workbench) and slowly passing the vacuum nozzle over the entire surface area.
5. Reinstall the bag and reattach the clamp.

Note: Filter bags can also be machine washed (gentle cycle only) in cold or warm water. Do not use hot water or detergent. Make sure the bag has completely dried before reinstalling on the machine. Make sure to remove the belt clamp from the bag before washing!



CLEANING OR REPLACING THE CANISTER FILTER (10-110CF only)



TURN THE SWITCH TO THE "OFF" POSITION AND UNPLUG THE UNIT FROM THE POWER SOURCE BEFORE CLEANING OR REPLACING CANISTER FILTER OR BEFORE PERFORMING ANY MAINTENANCE.

After a period of time depending on the frequency of use, the canister filter may become clogged and affect airflow as well the overall efficiency of the unit. Should you notice a drop in the efficiency or performance of the unit, it may be a sign that it is time to clean the filters. If so, proceed as follows:

1. Turn off and unplug the machine.
2. For basic cleaning, simply rotate the handle on the canister several rotations. The internal flap will rub against the corrugated inner filter and shake free any built-up dust from inside the filter.
3. For a more thorough cleaning, after rotating the handle, unclip the belt clamps and remove the canister from the machine and place it on the ground upside down.
4. Vacuum the inside of the canister to remove any remaining dust from inside.
5. Re-install the canister and reattach the clamp.



CLEANING OR REPLACING THE COLLECTOR BAG



TURN THE SWITCH TO THE "OFF" POSITION AND UNPLUG THE UNIT FROM THE POWER SOURCE BEFORE CLEANING OR REPLACING COLLECTOR BAG OR BEFORE PERFORMING ANY MAINTENANCE.

Note: Depending on your needs, shop situation and local regulations collections bags can be emptied and reused or disposed (with their contents) and replaced with a new bag.

1. Turn off and unplug the machine.
2. Unclip the bag clamp and remove the bag from the machine.
3. Empty the bag (or simply dispose of the bag and its contents and replace with a new bag) disposing of the contents in a safe and responsible manner that complies with all local codes and regulations regarding waste disposal.
4. Re-install the bag and reattach the clamp.

RECOMMENDED OPTIONAL ACCESSORIES

We offer a large variety of products for increased convenience, productivity, accuracy and safety when using your dust collector. Here's a small sampling of optional accessories available from your local General International dealer.

For more information about our products, please visit our website at www.general.ca



**4" to 2 1/2" Reducer
#10-086**



**1 Micron Canister Filter
#10-106C**



**4" x 10' Polyethylene
Flexible Hose
#10-410**



**4" x 50' heavy-duty
polyethylene
flexible hose
#10-130**



**Clear Plastic
Collector Bag
#10-120**



**Dust Collector Accessory
Kit Two Machine Hook-Up
#10-200**

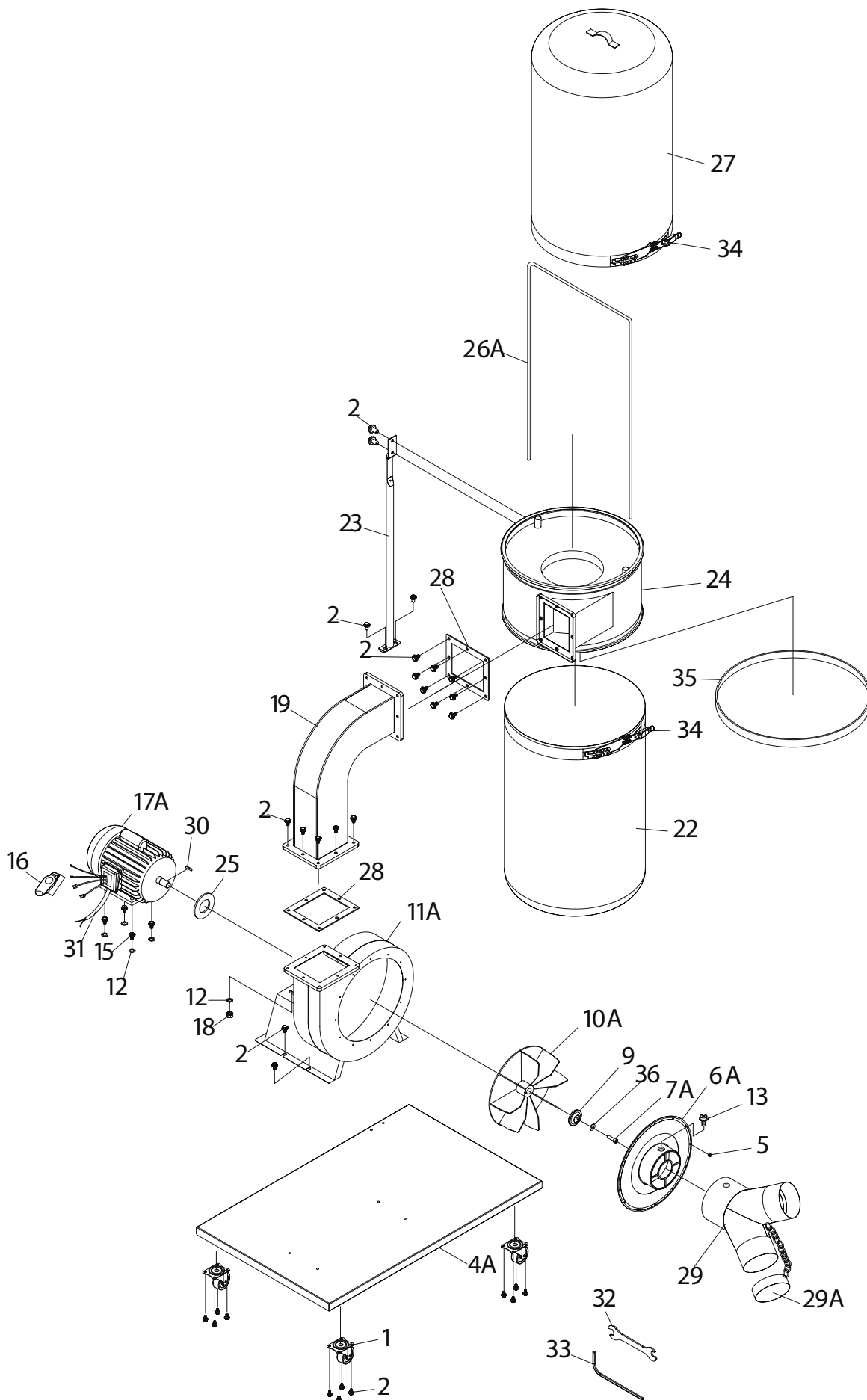
- (2) 4" x 10' Polyethylene flexible hose.
- (1) 4" Universal dust hood outlet.
- (1) Table saw dust hood.
- (2) 4" blast gates
- (1) 4"x4" fitting.
- (10) 4" wire bail hose clamps.
- (6) Heavy duty clear plastic collector bags.



**Window Type
Collector Bag
#10-125**



**2 Micron Filter Bag
#10-115**



PARTS LIST
10-110 & 10-110CF

NO	PART NO.	DESCRIPTION	SPECIFICATION	QTY
1	10110-01	CASTER		4
2	10110-02	HEX. HEAD BOLT	5/16" X 1/2" L	40
4A	10110-04A	BASE PLATE		1
5	10110-05	PAN HEAD SCREW	3/16" X 3/8" L	12
6A	10110-06A	INLET COVER		1
7A	10110-07A	CAP SCREW	M6 X 1.0 X 30 MM L.H.	1
9	10110-09	WASHER		1
10A	10110-10A	FAN		1
11A	10110-11A	COLLECTOR BODY		1
12	10110-12	WASHER	5/16"	8
13	10110-13	PAN HEAD SCREW	3/16" X 3/8" L	1
14	10110-14	HEX. HEAD BOLT	5/16" X 3/4" L	2
15	10110-15	HEX. HEAD BOLT	5/16" X 1" L	4
16	10110-16	SWITCH		1
17A	10110-17A	MOTOR		1
18	10110-18	NUT	5/16"	4
19	10110-19	CONNECTOR		1
22	10110-22	COLLECTOR BAG (ITEM #10-120)		1
23	10110-23	VERTICAL SUPPORT ROD		1
24	10110-24	DRUM		1
25	10110-25	GASKET		1
26A	10110-26A	HANGER*		1
27	10110-27	FILTER**		1
28	10110-28	FOAM GASKET		2
29	10110-29	HOSE INLET ("Y" FITTING)		1
29A	10110-29A	CAP		1
30	10110-30	KEY	7MM X 7MM X 30MM	1
31	10110-31	POWER CORD		1
32	10110-32	OPEN END WRENCH	12MM	1
33	10110-33	HEX. WRENCH	5MM	1
34	10110-34	BELT CLAMP* (ITEM #10-093)		2
35	10110-35	FOAM GASKET		1
36	10110-36	LOCK WASHER	1/4"	1

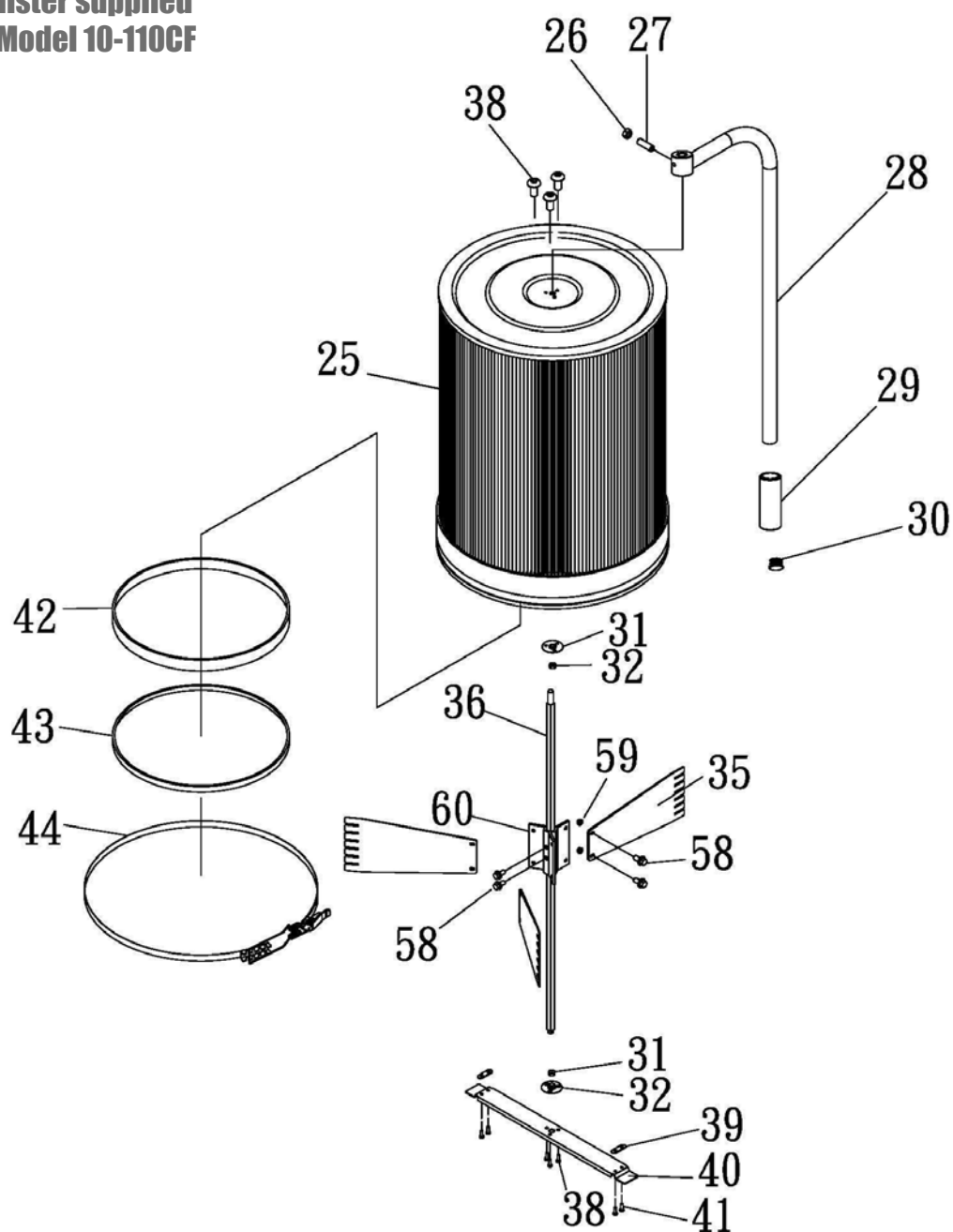
*Not supplied/required for Model #10-110CF

**Filter bag #10-115 for model 10-110 or Canister filter #10-106C for model 10-110CF.

IMPORTANT: When ordering replacement parts, always give the model number, serial number of the machine and part number. Also a brief description of each item and quantity desired.

Notes

**Canister supplied
on Model 10-110CF**



**PARTS LIST
10-106C**

PART #	DESCRIPTION	SPEC.	QTY	PART #	DESCRIPTION	SPEC.	QTY
10106C-25	CANISTER FILTER	DIA.500MM	1	10106C-38	ROUND HEAD SCREW	M5X6	6
10106C-26	NUT	5/16"	1	10106C-39	FIXING PLATE		2
10106C-27	SET SCREW	5/16"X3/4"	1	10106C-40	BOTTOM FIXING PLATE		1
10106C-28	HANDLE		1	10106C-41	PHILLIPS HEAD SCREW	M5X15	4
10106C-29	HANDLE SPONGE	7/8"	1	10106C-42	FOAM GASKET	3X20X1560	1
10106C-30	CAP	3/4"	1	10106C-43	FOAM GASKET	5X42X1565	1
10106C-31	CANISTER FIXING PLATE		2	10106C-44	BELT CLAMP	500CK	1
10106C-32	BEARING	1206	2	10106C-58	FLANGE BOLT	M5X12	8
10106C-35	FLAPPER		3	10106C-59	NUT	M5	6
10106C-36	SPINDLE		1	10106C-60	FLAPPER BRACKET		1

Notes

MODEL 10-110 & 10-110CF



8360 Champ-d'Eau, Montreal (Quebec) Canada H1P 1Y3

Tel.: (514) 326-1161

Fax: (514) 326-5565 - Parts & Service / Fax: (514) 326-5555 - Order Desk

orderdesk@general.ca
www.general.ca

Follow us:

