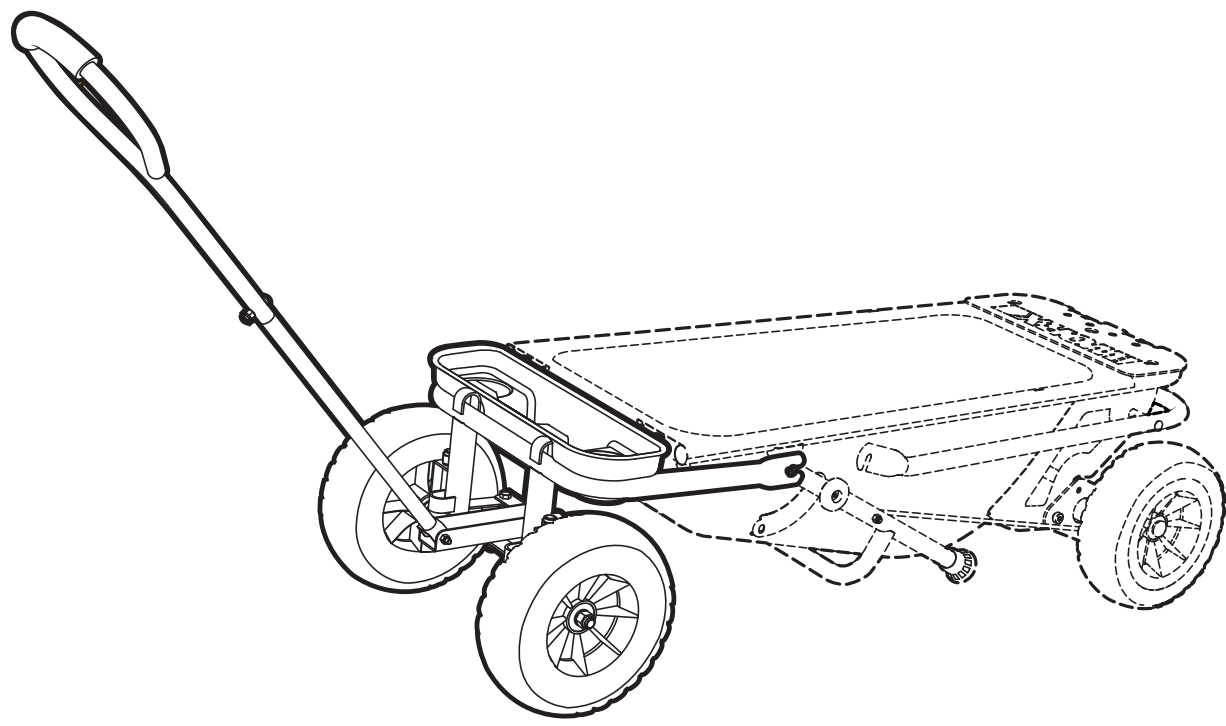
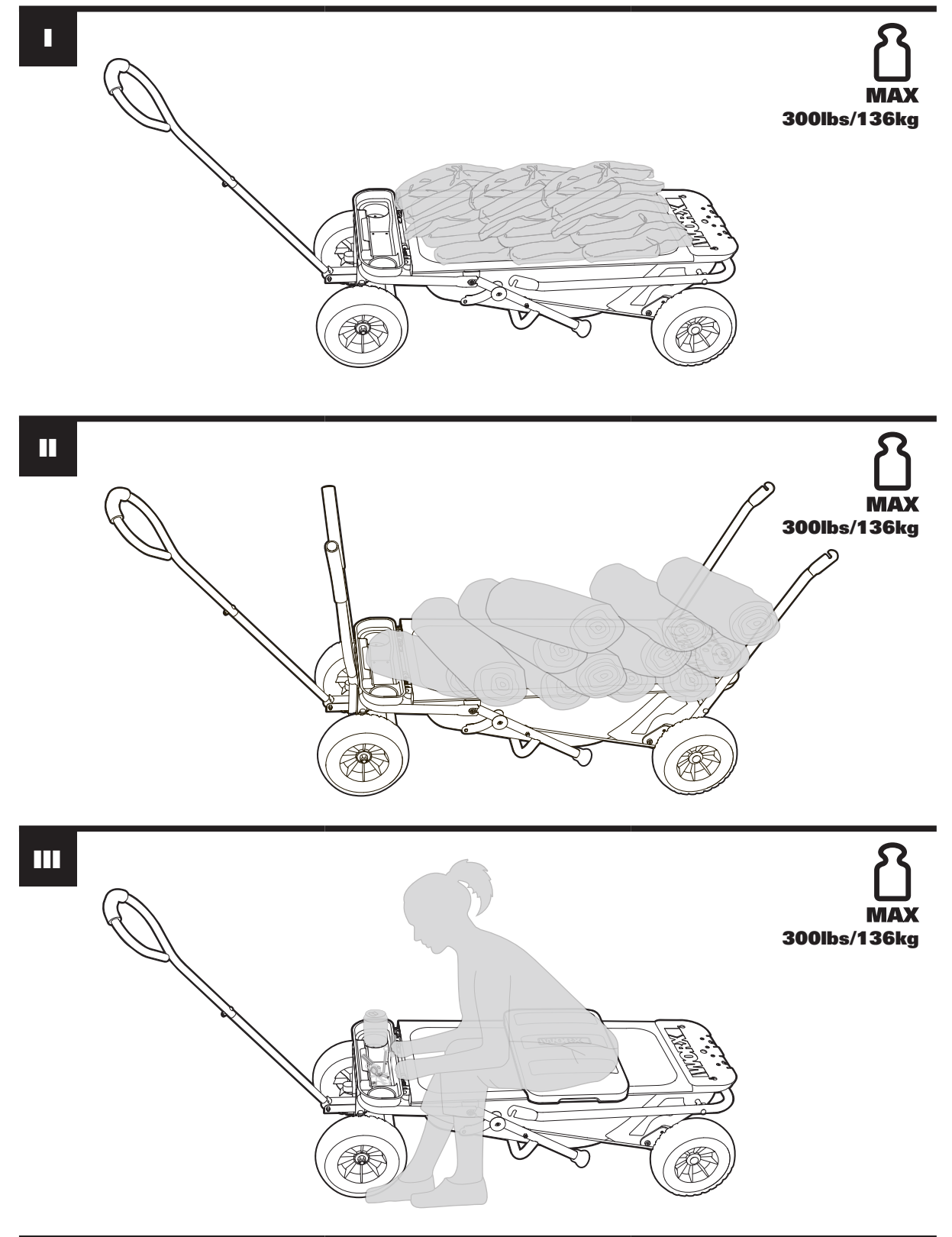
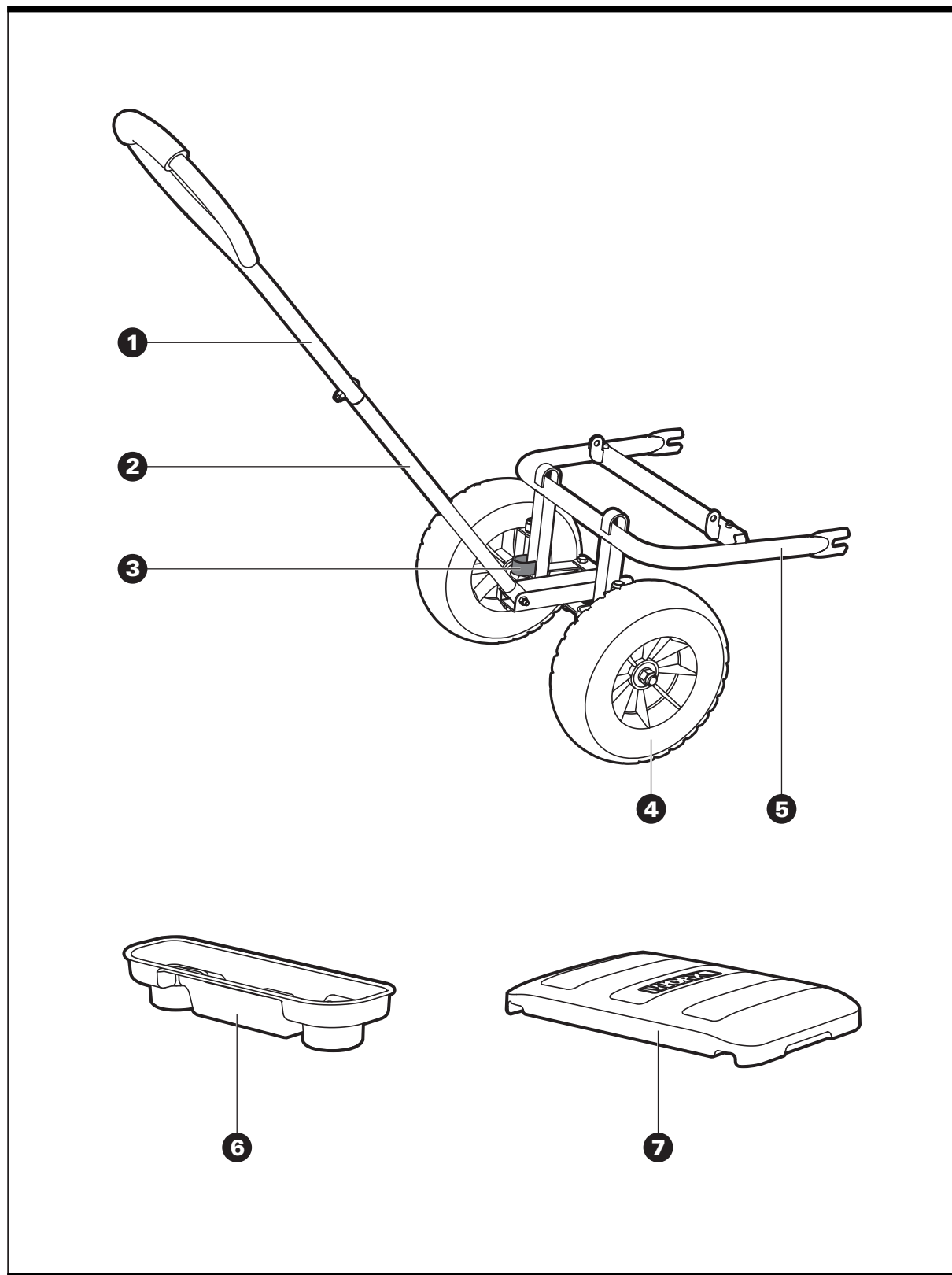


# WORX

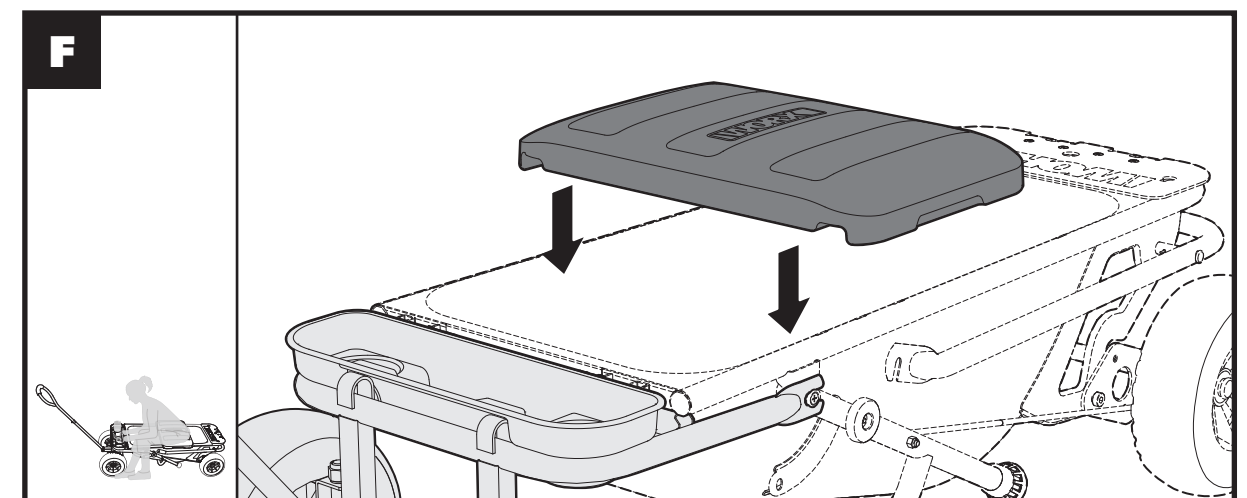
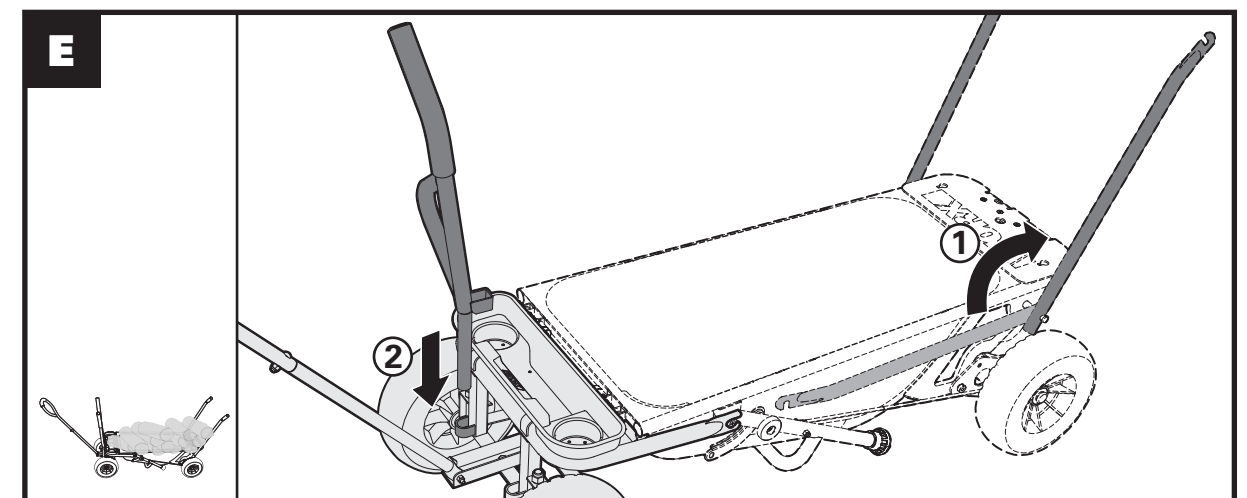
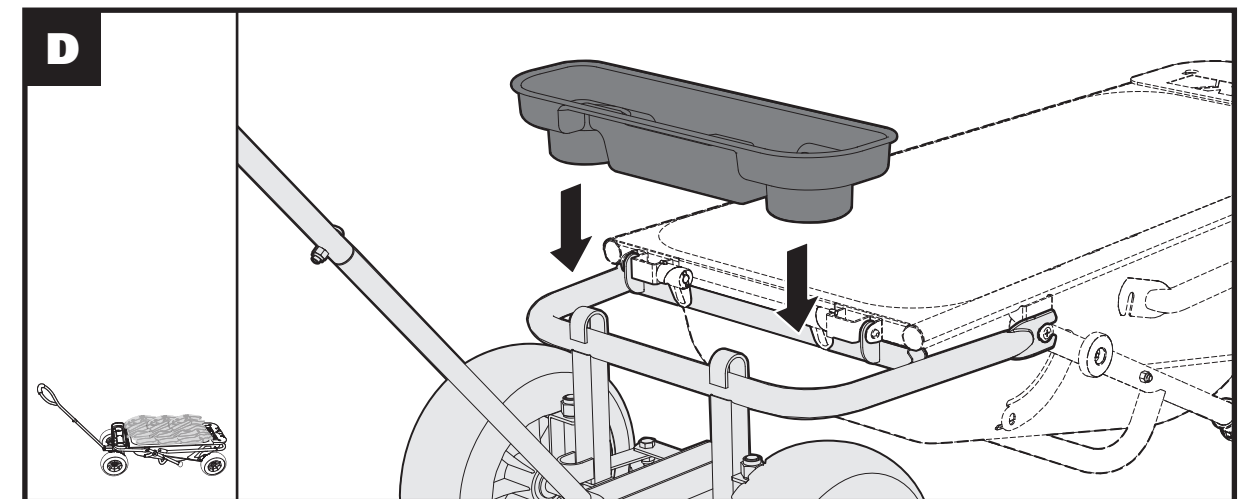
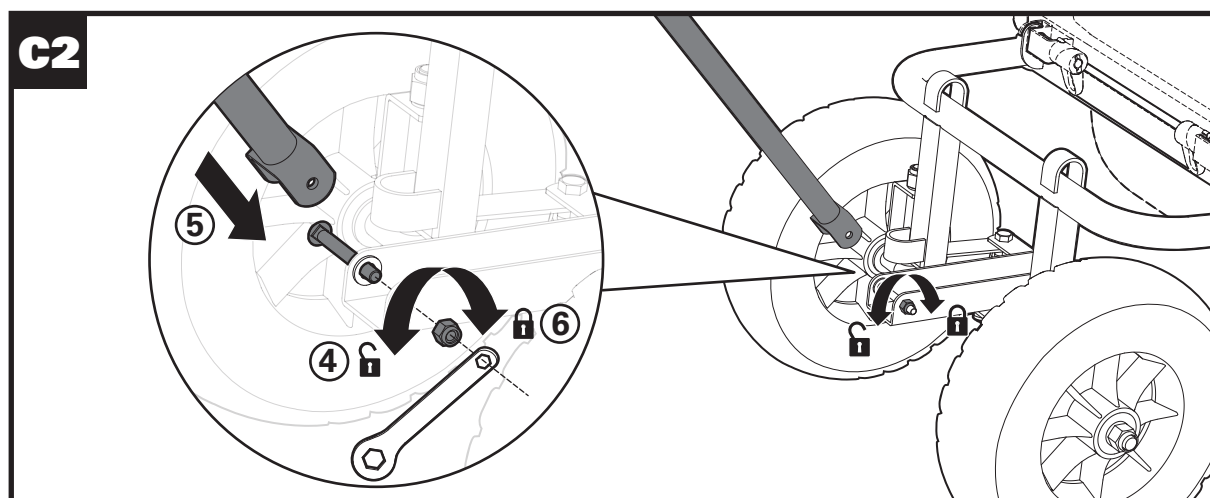
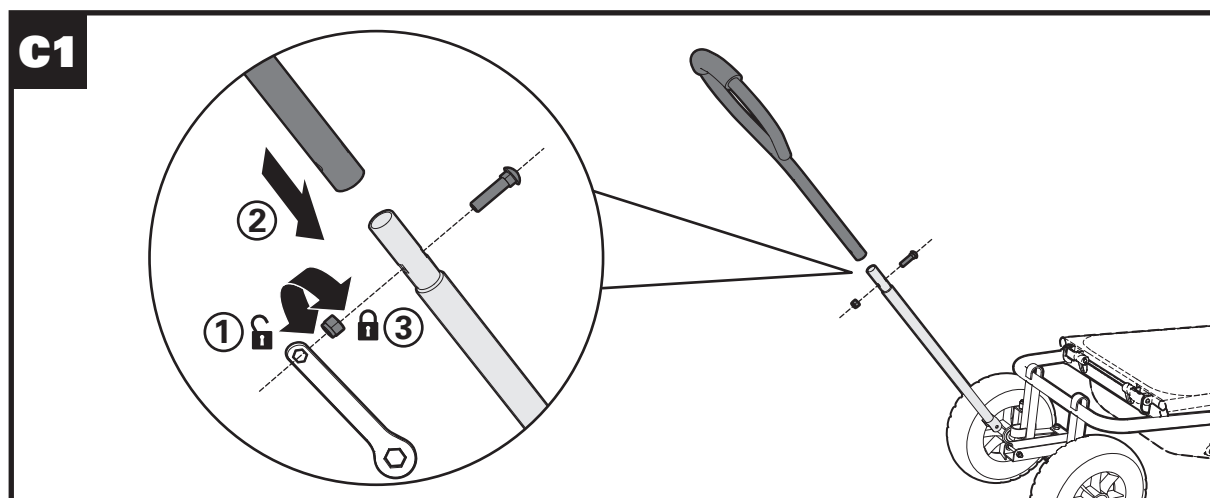
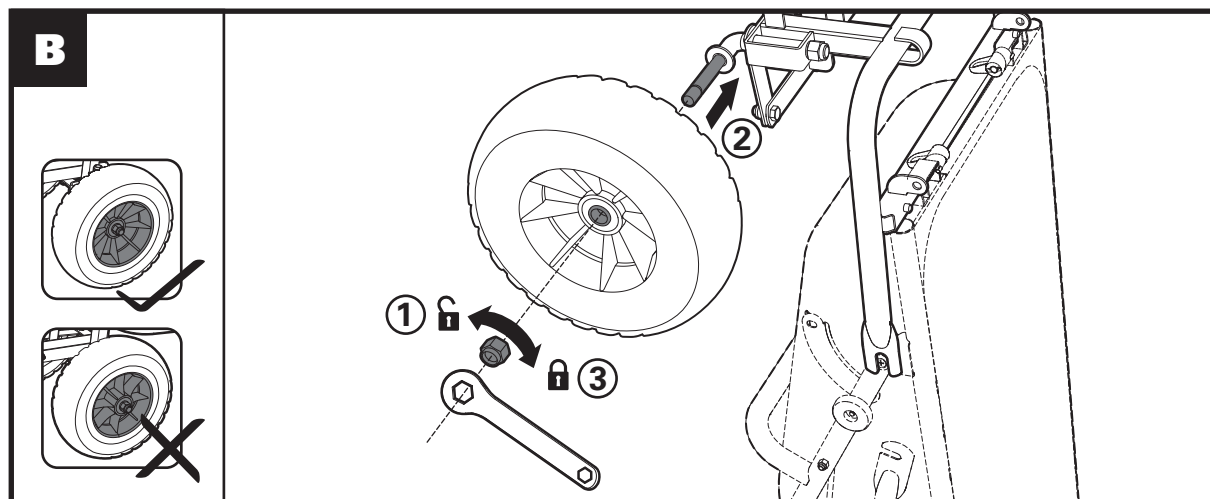
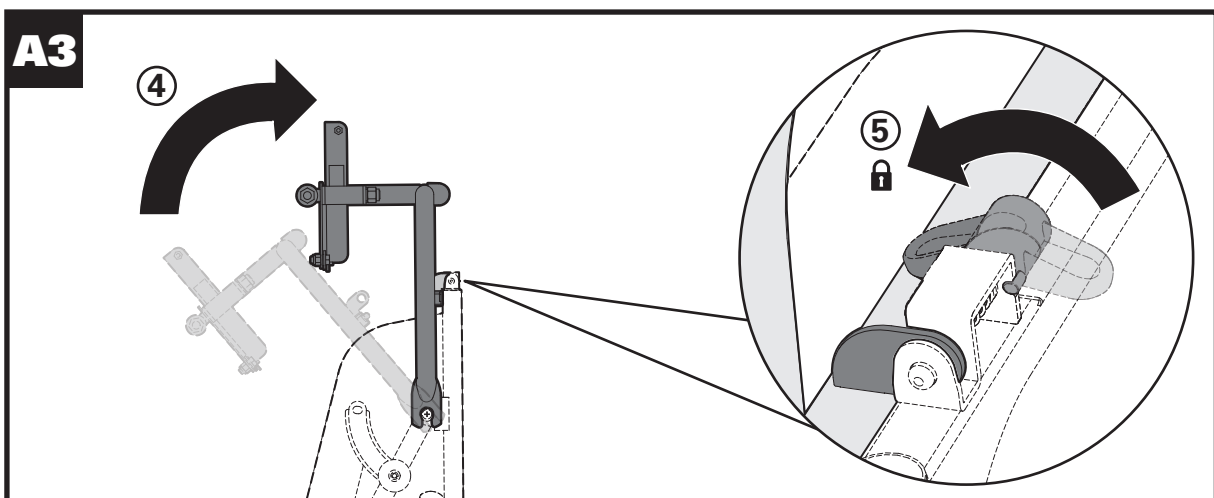
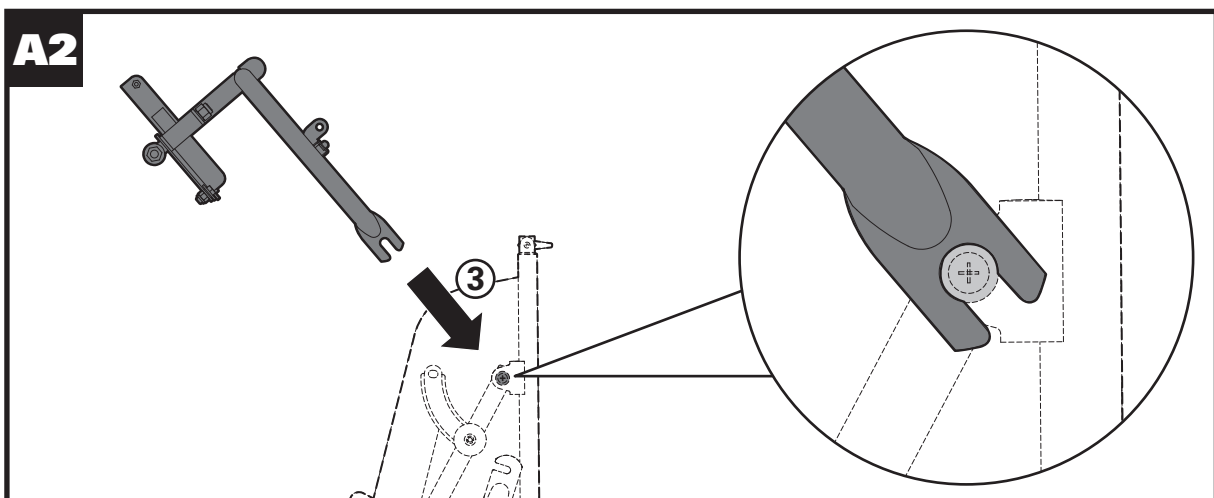
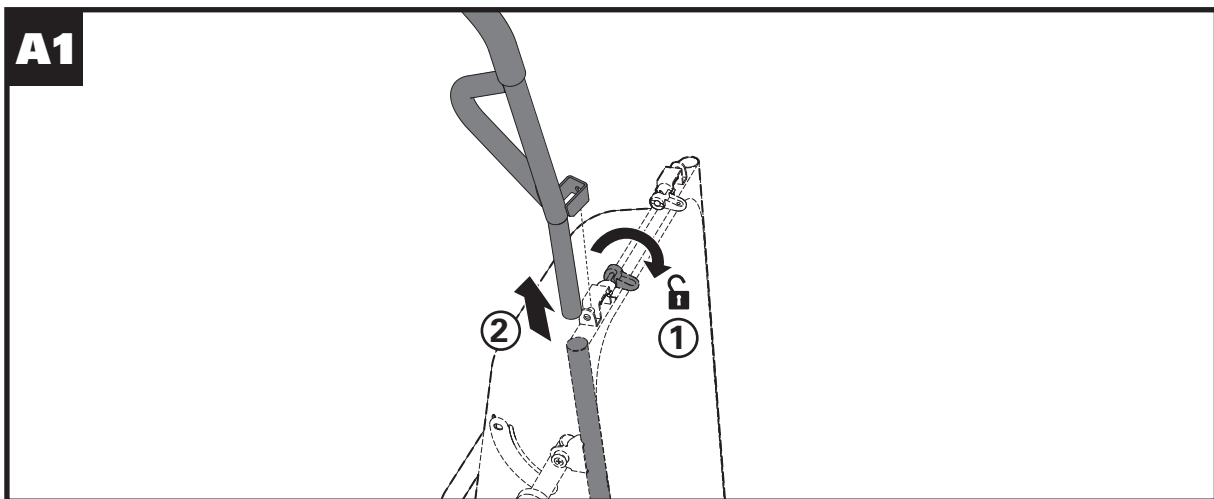


**AEROCART™**  
GENUINE ACCESSORIES





HELPLINE NUMBER  
1-866-354-WORX (9679)

**WA0228**



## GENERAL SAFETY WARNINGS

 **WARNING: Read all safety warnings and all instructions.** Failure to follow the warnings and instructions may result in serious injury. Save all warnings and instructions for future reference.

 **WARNING: This product may contain lead, phthalate or other chemicals known to the State of California to cause cancer, birth defects and other reproductive harm. Please wash your hands after use.**

- Operators should be aware of and minimize the following hazards:
  - Running the cart's wheels off of bridge/dock plates, dock platforms, uneven surfaces, or inclines;
  - Colliding with other carts or obstructions. Secure the load and close containers to prevent losing control of the load while moving;
  - Jamming of the operator's hands between the cart and other objects;
  - Running the cart's wheels over the operator's feet;
- Keep pneumatic tires at the rated pressure and check often.
- Carts used for transporting chemicals should have rails to prevent chemicals from falling off the cart.
- Inspect carts routinely and do not use them if they are not in good repair.
- Check the tires to make sure they are properly inflated.
- Maintain adequate visibility. Do not stack materials beyond a safe height or in a manner that obstructs vision. Pay attention to the path of travel and do not move too fast.
- Do not exceed the manufacturer's recommended load limits. Be aware of lifting/bending and other ergonomic hazards when using carts. Avoid heavy loads that require excessive force to move, do not twist while moving a cart, and be alert to terrain hazards that can cause the cart to shift or stop abruptly (e.g., cracks, dips, uneven surfaces, etc.).
- Ensure that the load is not wider than the cart, especially when traveling in narrow halls and doorways. Do not forget the stationary mullion in double doorways.
- Do not try to navigate carts on stairs or steep inclines.
- When not in use, carts should be parked in a designated area, not in aisles or other places where they cause trip hazards, block traffic, breaker boxes, and fire extinguishers and pull stations, eyewash stations, or other safety equipment.
- Carts with drawbar handles should be parked with handles up and out of the way. Two wheeled carts should be stored upright with handles leaning against a wall.
- Do not sit or stand on the hand cart.

### Four-wheeled Hand Cart Safety Warnings

- Place loads evenly to prevent tipping.
- Carts should be pushed rather than pulled except for those with a fifth wheel and a handle for pulling.

<b>1. Handle</b>
<b>2. Handle Shaft</b>
<b>3. Hay Wagon Clip</b>
<b>4. Wheel</b>
<b>5. Wagon Axle Body</b>
<b>6. Tray</b>
<b>7. Seat</b>

## MAX LOADING

Wagon Cart	300lbs (136kg)	See Fig. I
Hay Wagon	300lbs (136kg)	See Fig. II
Seat	300lbs (136kg)	See Fig. III


## SYMBOLS

 Incorrect

 Correct

 Lock

 Unlock

 Use spanner

## ASSEMBLY & OPERATION

Action	Figure
Attaching the Wagon Axle Body to the Aerocart™	See Fig. A1, A2, A3
Attaching Wheels	See Fig. B
Attaching Handle	See Fig. C1,C2
Wagon Cart	See Fig. D
Hay Wagon	See Fig. E
Seat	See Fig. F

## ASSEMBLY

**Attaching the Wagon Axle Body to the Aerocart™ (See Fig. A1, A2, A3)**

- Position the Aerocart™ into dolly mode (standing upright, with legs folded down)
- Rotate the Handle Locking Levers on the Aerocart™ to unlock.
- Remove the Handles from the Aerocart™.
- Hold the Wagon Axle Body and approach the Cart horizontally. Engage the slots on the end of the tubes with the knobs on both sides of the Aerocart™.
- Rotate the Wagon Axle Body upwards until vertical. Make sure the locking pin holes have aligned with the handle locking pins.
- Rotate the Handle Locking Levers to secure the Wagon Axle Body in place.

### Attaching Wheels (See Fig. B)

- Remove the nut from the axle shaft using the spanner wrench provided.
- Align the wheel so that the concave rim faces outward.
- Slide the wheel onto the shaft of the Wagon Axle Body and secure in place using the supplied nut and spanner wrench.
- Repeat on other side of Wagon Axle Body.

### Attaching Handle (See Fig. C1,C2)

- Align the holes on the Wagon Handle and the Wagon Handle Shaft and slide them into each other.
- Secure in place using the supplied nut, bolt, and washer.
- Attach the Wagon Handle to the tongue of the Wagon Axel Body by aligning the holes and then securing in place using the supplied nut and bolt.

## OPERATION

The Aerocart™ can be transformed into a wagon with four wheels.

### Wagon Cart (See Fig. D)

- Place the Tray in the Wagon Axle Body, and make sure it is fully secured.

### Hay Wagon (See Fig. E)

The Hay Wagon mode may be used for carrying large or more objects.

- Lift the Extension Arms.
- Insert the Handles of the Aerocart™ into the Hay Wagon Clips.

### Seat (See Fig. F)

- Make sure the Aerocart™ is on stable ground.
- Place the Seat on the Aerocart™ so that the grooves are on the rim of the Aerocart™'s body.
- Confirm the Seat is stable before sitting on it.

**NOTE:** The Seat supplied with the Wagon Cart is different from the Seat supplied with the Aerocart™ model WG050.1.

Wagon Kit

EN

Wagon Kit

EN

Wagon Kit

F

Wagon Kit

ES

Wagon Kit

ES

**WORX**  
it's your nature

Made in China  
Fabriqué en Chine  
Fabricado en China

Copyright © 2014, Positec. All Rights Reserved.