



Illustrated Parts List



This generator is rated in accordance with CSA (Canadian Standards Association) standard C22.2 No. 100-94 (motor and generators).

Questions? Help is just a moment away!
Preguntas? La ayuda es justa un momento lejos!

Call: Portable Generator Helpline

Llame: Línea Directa del Generador portátil - 1-800-732-2989 M-F 8-5 CST

Model / Modelo

| Mfg. No. | Description / Descripción |
|-----------------|----------------------------------|
| 030470-0 | 7,000 Watt Briggs & Stratton |

Manual Part No. 312722

Revision A

Rev. Date: 1/17/2011

Not for
Reproduction

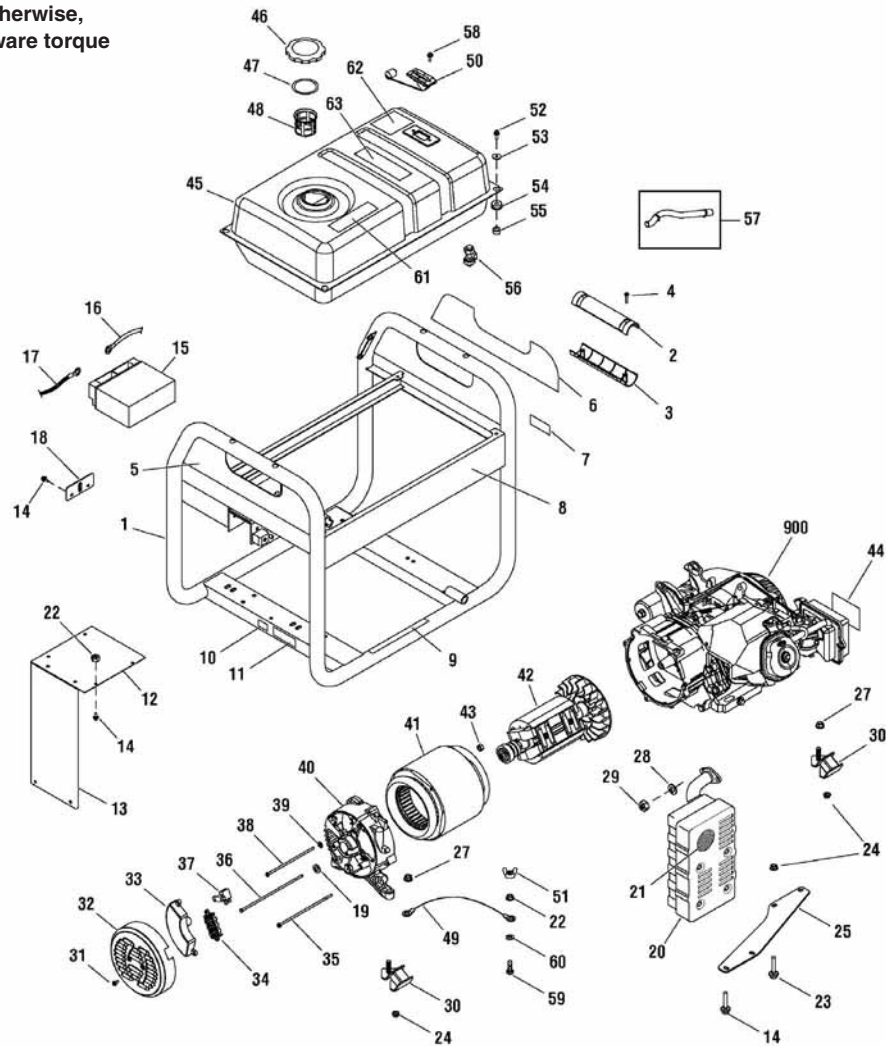
| PRODUCT COMPONENTS | PAGES |
|---|--------------------------|
| Main Unit | 4 |
| Control Panel | 7 |
| Wheel Kit | 8 |
| Torque Specification Chart | Inside Back Cover |

Not for
Reproduction

Main Unit

311995

NOTE: Unless noted otherwise, use the standard hardware torque specification chart.



| REF. | PART NO. | DESCRIPTION | REF. | PART NO. | DESCRIPTION |
|------|----------|-----------------------|------|----------|------------------|
| 1 | 312007GS | CRADLE | 18 | 311983GS | PLATE, Battery |
| 2 | 312008GS | GRIP, Handle | 19 | 312045GS | WASHER |
| 3 | 312009GS | GRIP, Handle | 20 | 192569GS | MUFFLER |
| 4 | 75477GS | SCREW | 21 | 83083GS | SCREEN |
| 5 | 311480GS | DECAL | 22 | 197861GS | NUT |
| 6 | 311479GS | DECAL | 23 | 311987GS | SCREW |
| 7 | 197798GS | DECAL | 24 | 67989GS | NUT |
| 8 | 311482GS | DECAL | 25 | 311985GS | SUPPORT, Muffler |
| 9 | 200310GS | DECAL | 27 | 193747GS | NUT |
| 10 | B4986GS | DECAL | 28 | 22129GS | WASHER |
| 11 | 200311GS | DECAL | 29 | 45771GS | NUT |
| 12 | 312020GS | HEATSHIELD | 30 | 312012GS | MOUNT, Vibration |
| 13 | 312019GS | HEATSHIELD | 31 | 207824GS | SCREW |
| 14 | 209775GS | BOLT | 32 | 209428GS | END COVER |
| 15 | 193043GS | BATTERY | | | |
| 16 | 312014GS | CABLE, Battery, Red | | | |
| 17 | 312026GS | CABLE, Battery, Black | | | |

Footnotes

** Contact Engine Manufacturer

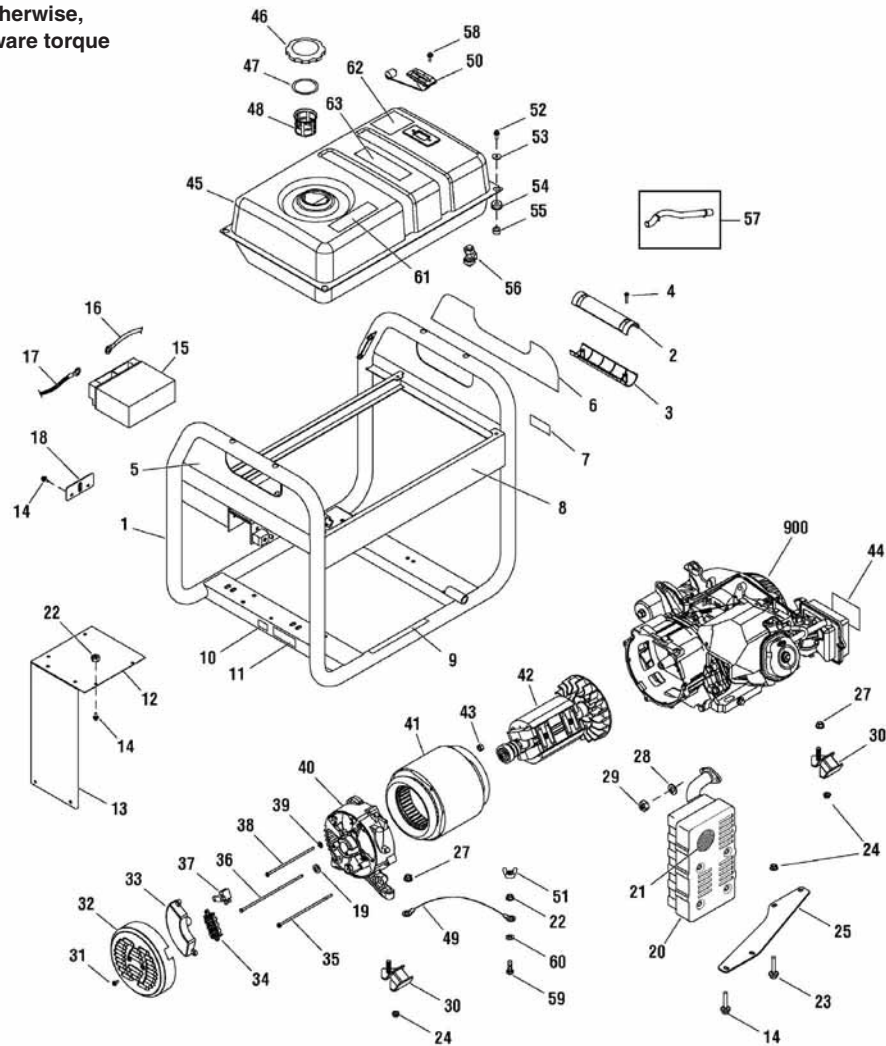
The above parts group applies to the following Mfg. Nos.:

030470-0 - 7,000 Watt Briggs & Stratton

Main Unit

311995

NOTE: Unless noted otherwise, use the standard hardware torque specification chart.



| REF. | PART NO. | DESCRIPTION | REF. | PART NO. | DESCRIPTION |
|------|----------|-------------------|------|----------|------------------------|
| 33 | 312038GS | VOLTAGE REGULATOR | 50 | 311992GS | GAUGE, Fuel |
| 34 | 312041GS | TERMINAL BLOCK | 51 | 87680GS | NUT |
| 35 | 312042GS | BOLT | 52 | 209421GS | BOLT |
| 36 | 312044GS | BOLT | 53 | 312005GS | WASHER |
| 37 | 209441GS | BRUSH ASSEMBLY | 54 | 312006GS | GROMMET |
| 38 | 312046GS | BOLT | 55 | 312010GS | SPACER |
| 39 | 49226GS | WASHER | 56 | 209417GS | VALVE, Fuel |
| 40 | 209423GS | CARRIER, Bearing | 57 | 791745 | FUEL HOSE (Cut to Fit) |
| 41 | 312035GS | STATOR | 58 | 197896GS | SCREW |
| 42 | 312036GS | ROTOR | 59 | 47411GS | SCREW |
| 43 | 207878GS | NUT | 60 | 22097GS | WASHER |
| 44 | 311478GS | DECAL | 61 | 188333GS | DECAL |
| 45 | 311988GS | TANK, Fuel | 62 | 202997GS | DECAL |
| 46 | 311990GS | CAP, Fuel | 63 | 194984GS | DECAL |
| 47 | 209939GS | SEAL | 900 | ---- | ** ENGINE |
| 48 | 311991GS | FILTER, Screen | | | |
| 49 | 312040GS | WIRE | | | |

Footnotes

** Contact Engine Manufacturer

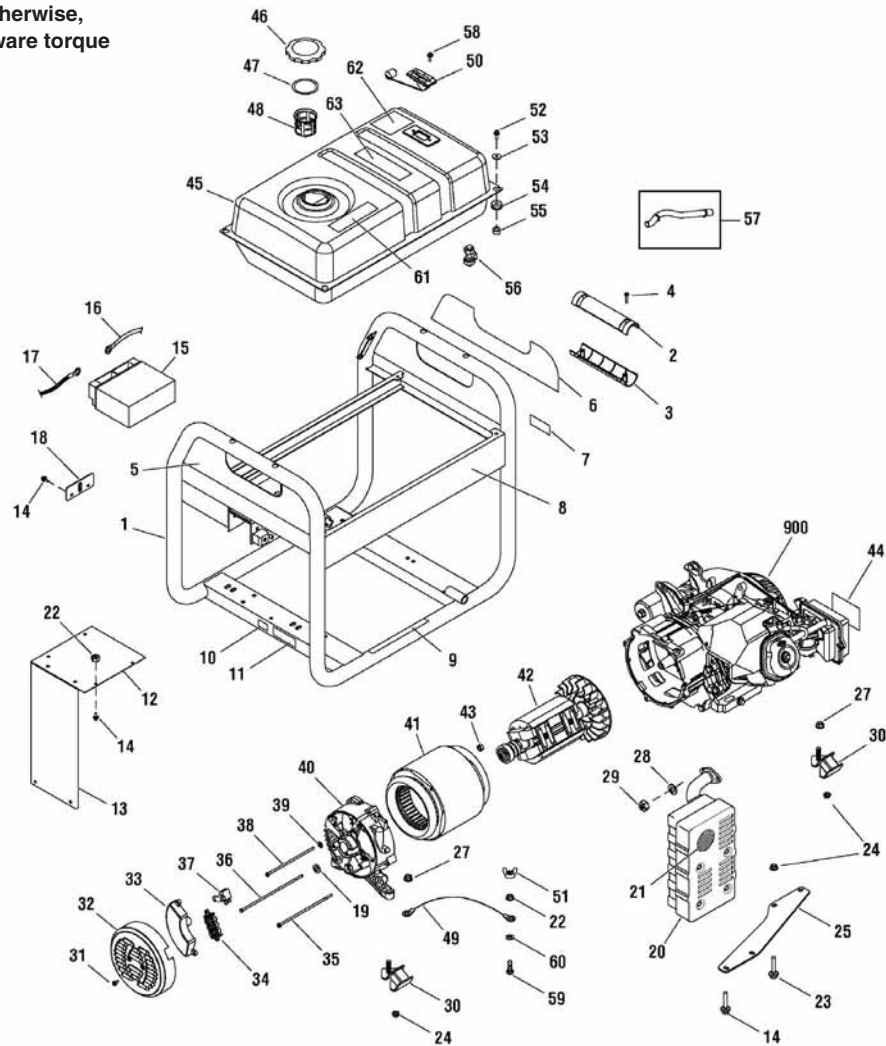
The above parts group applies to the following Mfg. Nos.:

030470-0 - 7,000 Watt Briggs & Stratton

Main Unit

311995

NOTE: Unless noted otherwise, use the standard hardware torque specification chart.



| REF. PART NO. | DESCRIPTION | REF. PART NO. | DESCRIPTION |
|---------------|--|---------------|-------------|
| -- 193347GS | KIT, Hardware, Battery (Not Illustrated) | | |
| -- 310784GS | MANUAL, Operator's (Not Illustrated) | | |
| -- B4177GS | CHARGER, Battery (Not Illustrated) | | |

Footnotes

** Contact Engine Manufacturer

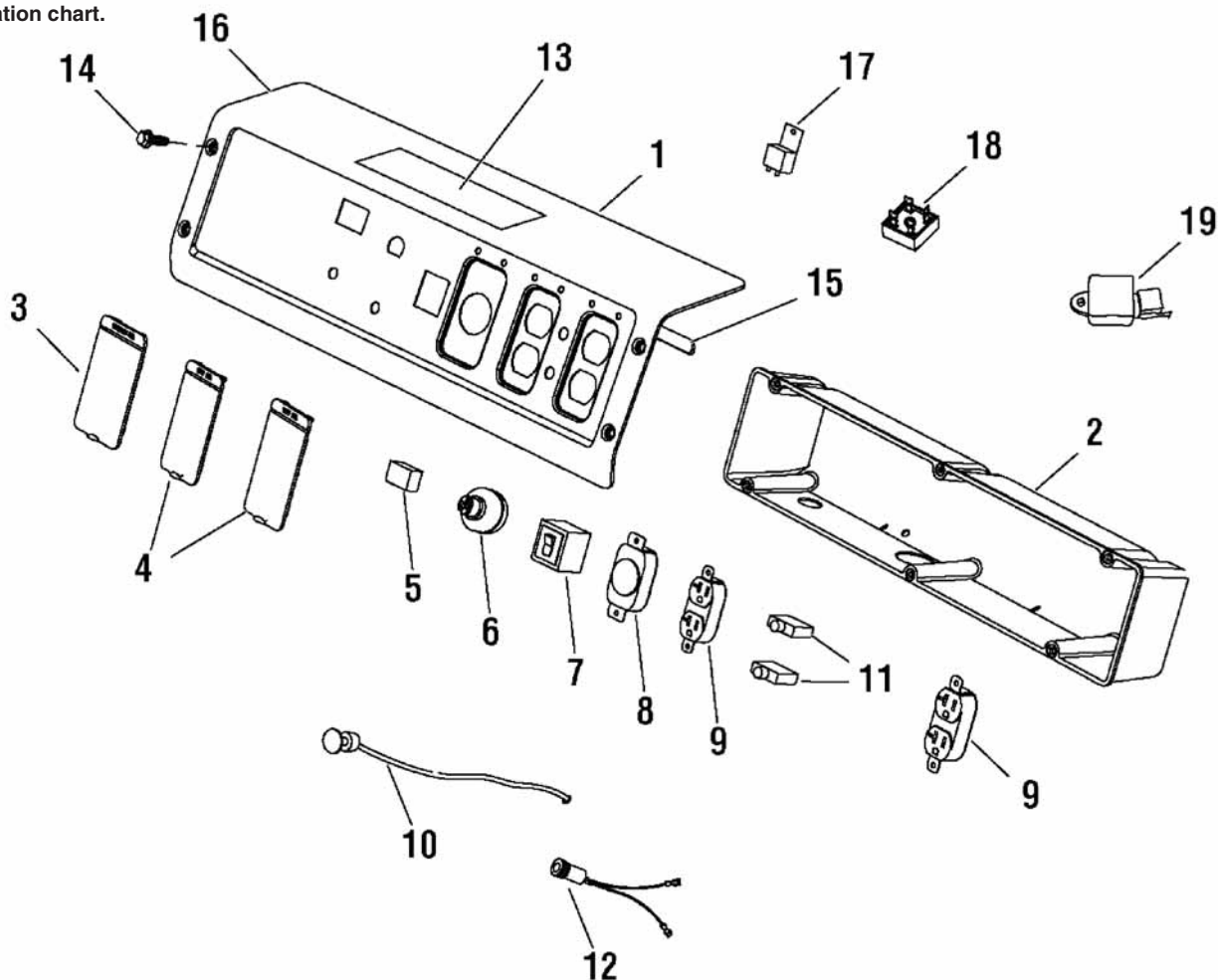
The above parts group applies to the following Mfg. Nos.:

030470-0 - 7,000 Watt Briggs & Stratton

Control Panel

311832

NOTE: Unless noted otherwise,
use the standard hardware torque
specification chart.



| REF. PART NO. | DESCRIPTION | REF. PART NO. | DESCRIPTION | | |
|---------------|-------------|------------------------|-------------|----------|-----------------------|
| 1 | 312001GS | PANEL, Control | 18 | 312027GS | RECTIFIER, Bridge |
| 2 | 312002GS | BOX, Control Panel | 19 | 314211GS | RECTIFIER |
| 3 | 312030GS | COVER, Outlet | -- | 691959 | KEY (Not Illustrated) |
| 4 | 312031GS | COVER, Outlet | | | |
| 5 | 198245GS | METER, Hour | | | |
| 6 | 692318 | KEY, Switch Ignition | | | |
| 7 | 202033GS | BREAKER, Circuit, 30A | | | |
| 8 | 43437GS | OUTLET, 120/240V TL30A | | | |
| 9 | 68759GS | OUTLET, 120V 20A | | | |
| 10 | 312034GS | CABLE, Choke | | | |
| 11 | 202394GS | BREAKER, Circuit, 20A | | | |
| 12 | 312004GS | JACK, Coaxial | | | |
| 13 | 311565GS | DECAL | | | |
| 14 | 209775GS | BOLT | | | |
| 15 | 312033GS | TRIM-EDGE | | | |
| 16 | 311476GS | DECAL | | | |
| 17 | 312003GS | RELAY | | | |

Footnotes

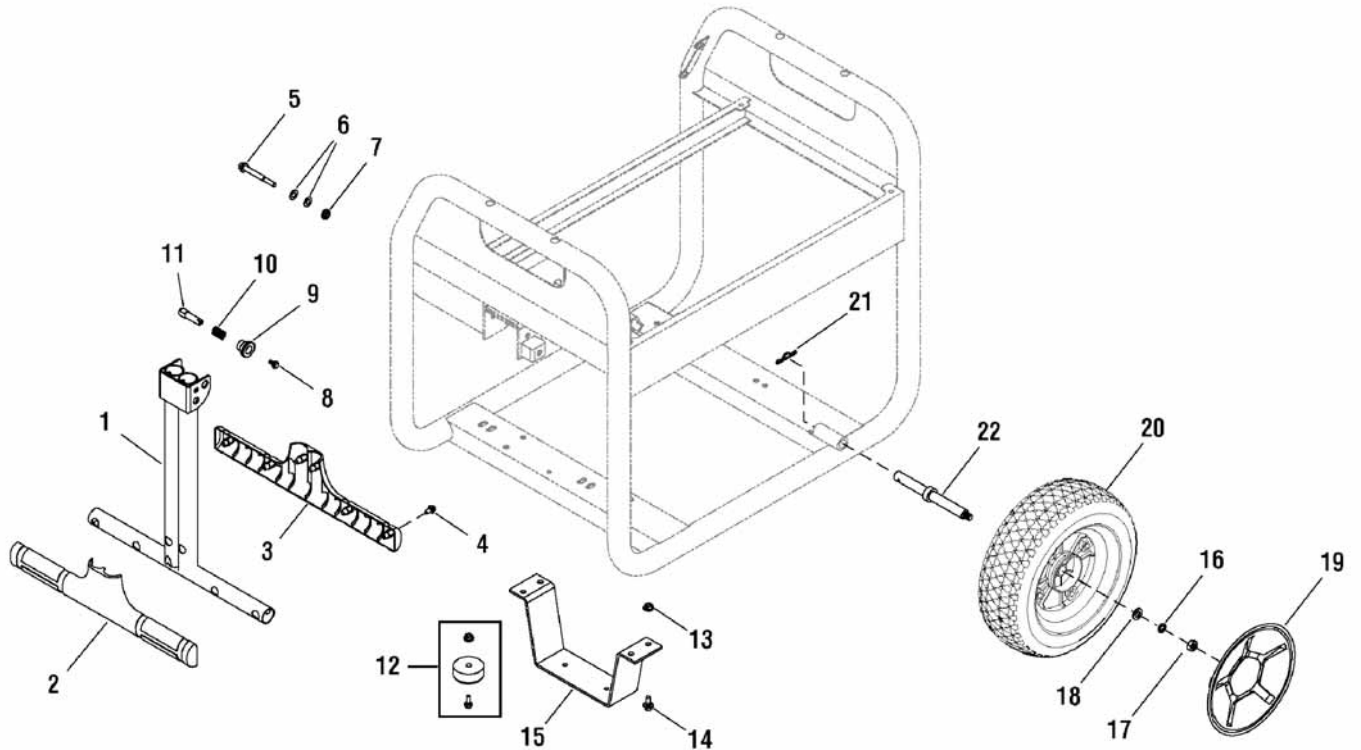
The above parts group applies to the following Mfg. Nos.:

030470-0 - 7,000 Watt Briggs & Stratton

Wheel Kit

312167

NOTE: Unless noted otherwise, use the standard hardware torque specification chart.



| REF. PART NO. | DESCRIPTION | REF. PART NO. | DESCRIPTION | | |
|---------------|-------------|------------------|-------------|-----------|--------------------------|
| 1 | 311999GS | HANDLE | 18 | 94856GS | WASHER |
| 2 | 311998GS | GRIP, Handle | 19 | 312022GS | HUBCAP |
| 3 | 312000GS | GRIP, Handle | 20 | 312021GS | WHEEL |
| 4 | 75477GS | SCREW | 21 | 5025210YP | PIN, Hair, .0915 x 1-7/8 |
| 5 | 312013GS | BOLT | 22 | 312023GS | AXLE |
| 6 | 187104GS | WASHER | | | |
| 7 | 49820GS | NUT | | | |
| 8 | 207825GS | BOLT | | | |
| 9 | 312016GS | KNOB | | | |
| 10 | 312015GS | SPRING | | | |
| 11 | 312017GS | PIN | | | |
| 12 | 192310GS | MOUNT, Vibration | | | |
| 13 | 52857GS | NUT | | | |
| 14 | 42568GS | BOLT | | | |
| 15 | 311994GS | SUPPORT, Leg | | | |
| 16 | 46526GS | WASHER | | | |
| 17 | 45772GS | NUT | | | |

Footnotes

The above parts group applies to the following Mfg. Nos.:

030470-0 - 7,000 Watt Briggs & Stratton

Not for
Reproduction

Not for
Reproduction

Hardware Identification & Torque Specifications

| Torque Specification Chart | | | | | | | | |
|--|-----------|------|-----------|------|------------|------|------------|------|
| FOR STANDARD METRIC MACHINE HARDWARE (Tolerance ± 20%) | | | | | | | | |
| Property Class | 5.6 | | 8.8 | | 10.9 | | 12.9 | |
| | Class 5.6 | | Class 8.8 | | Class 10.9 | | Class 12.9 | |
| Size Of Hardware | in/lbs | | in/lbs | | in/lbs | | in/lbs | |
| | ft/lbs | Nm. | ft/lbs | Nm. | ft/lbs | Nm. | ft/lbs | Nm. |
| M3 | 5.88 | .56 | 13.44 | 1.28 | 19.2 | 1.80 | 22.92 | 2.15 |
| M4 | 13.44 | 1.28 | 30.72 | 2.90 | 43.44 | 4.10 | 52.56 | 4.95 |
| M5 | 26.4 | 2.50 | 60.96 | 5.75 | 5.97 | 8.10 | 7.15 | 9.7 |
| M6 | 44.64 | 4.3 | 7.3 | 9.9 | 10.3 | 14 | 12.1 | 16.5 |
| M7 | 5.2 | 7.1 | 12.1 | 16.5 | 16.9 | 23 | 19.9 | 27 |
| M8 | 7.7 | 10.5 | 17.7 | 24 | 25 | 34 | 29 | 40 |
| M10 | 15 | 21 | 35 | 48 | 50 | 67 | 59 | 81 |
| M12 | 26 | 36 | 61 | 83 | 86.2 | 117 | 103 | 140 |
| M14 | 42 | 58 | 101 | 132 | 136 | 185 | 162 | 220 |
| M16 | 64 | 88 | 147 | 200 | 210 | 285 | 250 | 340 |
| M18 | 89 | 121 | 202 | 275 | 287 | 390 | 346 | 470 |
| M20 | 126 | 171 | 290 | 390 | 405 | 550 | 486 | 660 |
| M22 | 169 | 230 | 390 | 530 | 559 | 745 | 656 | 890 |
| M24 | 217 | 295 | 497 | 375 | 708 | 960 | 840 | 1140 |
| M27 | 320 | 435 | 733 | 995 | 1032 | 1400 | 1239 | 1680 |
| M30 | 435 | 590 | 995 | 1350 | 1401 | 1900 | 1681 | 2280 |
| M33 | 590 | 800 | 1349 | 1830 | 1902 | 2580 | 2278 | 3090 |
| M36 | 759 | 1030 | 1740 | 2360 | 2441 | 3310 | 2935 | 3980 |
| M39 | 988 | 1340 | 2249 | 3050 | 3163 | 4290 | 3798 | 5150 |

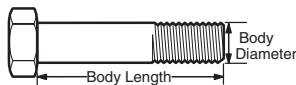
The guides and ruler furnished below are designed to help you select the appropriate hardware.



Nut, M8

Thread Diameter (mm)
Inside Diameter (in)
Threads per inch

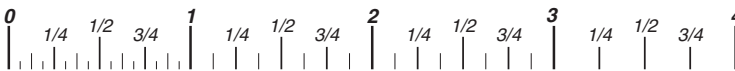
Nut, 1/2-16



Screw, M8- 1.25 x 25

Thread Diameter (mm)
Body Diameter
Distance between threads (mm)
Threads per inch
Body Length (mm)
Body Length (in)

Screw, 1/2- 16 x 2



Standard Hardware Sizing

When a washer or nut is identified as 1/2" (M8), this is the *Nominal size*, meaning the *inside diameter* is 1/2 inch (8mm metric thread diameter); if a second number is present it represents the *threads per inch* (distance between threads).

When bolt or capscrew is identified as 1/2 - 16 x 2" (M8 - 1.25 x 50), this means the *Nominal size*, or body diameter is 1/2 inch (8mm metric thread diameter), the second number, 16, represents the *threads per inch*, (1.25 thread diameter). The final number is the body length of the bolt or screw, 2 inches (50mm).

| Torque Specification Chart | | | | | | |
|---|-------------|-------|-------------|-------|-------------|---------|
| FOR STANDARD MACHINE HARDWARE (Tolerance ± 20%) | | | | | | |
| Hardware Grade | No Marks | | SAE Grade 5 | | SAE Grade 8 | |
| | SAE Grade 2 | | SAE Grade 5 | | SAE Grade 8 | |
| Size Of Hardware | in/lbs | | in/lbs | | in/lbs | |
| | ft/lbs | Nm. | ft/lbs | Nm. | ft/lbs | Nm. |
| 8-32 | 19 | 2.1 | 30 | 3.4 | 41 | 4.6 |
| 8-36 | 20 | 2.3 | 31 | 3.5 | 43 | 4.9 |
| 10-24 | 27 | 3.1 | 43 | 4.9 | 60 | 6.8 |
| 10-32 | 31 | 3.5 | 49 | 5.5 | 68 | 7.7 |
| 1/4-20 | 66 | 7.6 | 8 | 10.9 | 12 | 16.3 |
| 1/4-28 | 76 | 8.6 | 10 | 13.6 | 14 | 19.0 |
| 5/16-18 | 11 | 15.0 | 17 | 23.1 | 25 | 34.0 |
| 5/16-24 | 12 | 16.3 | 19 | 25.8 | 29 | 34.0 |
| 3/8-16 | 20 | 27.2 | 30 | 40.8 | 45 | 61.2 |
| 3/8-24 | 23 | 31.3 | 35 | 47.6 | 50 | 68.0 |
| 7/16-14 | 30 | 40.8 | 50 | 68.0 | 70 | 95.2 |
| 7/16-20 | 35 | 47.6 | 55 | 74.8 | 80 | 108.8 |
| 1/2-13 | 50 | 68.0 | 75 | 102.0 | 110 | 149.6 |
| 1/2-20 | 55 | 74.8 | 90 | 122.4 | 120 | 163.2 |
| 9/16-12 | 65 | 88.4 | 110 | 149.6 | 150 | 204.0 |
| 9/16-18 | 75 | 102.0 | 120 | 163.2 | 170 | 231.2 |
| 5/8-11 | 90 | 122.4 | 150 | 204.0 | 220 | 299.2 |
| 5/8-18 | 100 | 136 | 180 | 244.8 | 240 | 326.4 |
| 3/4-10 | 160 | 217.6 | 260 | 353.6 | 386 | 525.0 |
| 3/4-16 | 180 | 244.8 | 300 | 408.0 | 420 | 571.2 |
| 7/8-9 | 140 | 190.4 | 400 | 544.0 | 600 | 816.0 |
| 7/8-14 | 155 | 210.8 | 440 | 598.4 | 660 | 897.6 |
| 1-8 | 220 | 299.2 | 580 | 788.8 | 900 | 1,244.0 |
| 1-12 | 240 | 326.4 | 640 | 870.4 | 1,000 | 1,360.0 |

NOTES

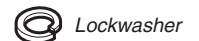
- These torque values are to be used for all hardware excluding: locknuts, self-tapping screws, thread forming screws, sheet metal screws and socket head setscrews.
- Recommended seating torque values for locknuts:
 - for prevailing torque locknuts - use 65% of grade 5 torques.
 - for flange whizlock nuts and screws - use 135% of grade 5 torques.
- Unless otherwise noted on assembly drawings, all torque values must meet this specification.

Common Hardware Types

Hex Head Capscrew

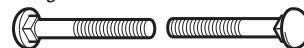


Washer



Lockwasher

Carriage Bolt



Hex Nut

Wrench & Fastener Size Guide

| | | | | |
|----------------------------------|----------------------------------|----------------------------------|--|---------------------------------|
| | | | | |
| 1/4" Bolt or Nut Wrench—7/16" | 5/16" Bolt or Nut Wrench—1/2" | 3/8" Bolt or Nut Wrench—9/16" | 7/16" Bolt or Nut Wrench (Bolt)—5/8" Wrench (Nut)—11/16" | 1/2" Bolt or Nut Wrench—3/4" |
| M6 Bolt or Nut Wrench—10mm | M8 Bolt or Nut Wrench—13mm | M10 Bolt or Nut Wrench—17mm | M12 Bolt or Nut Wrench—19mm | M14 Bolt or Nut Wrench—22mm |



Not for
Reproduction

Briggs & Stratton Power Products Group

Copyright© 2011 Briggs & Stratton Power Products Group. All rights reserved. No part of this page can be reproduced or transmitted in any form by any means without the express written permission of Briggs & Stratton Power Products Group.