

# WIRING INSTRUCTIONS

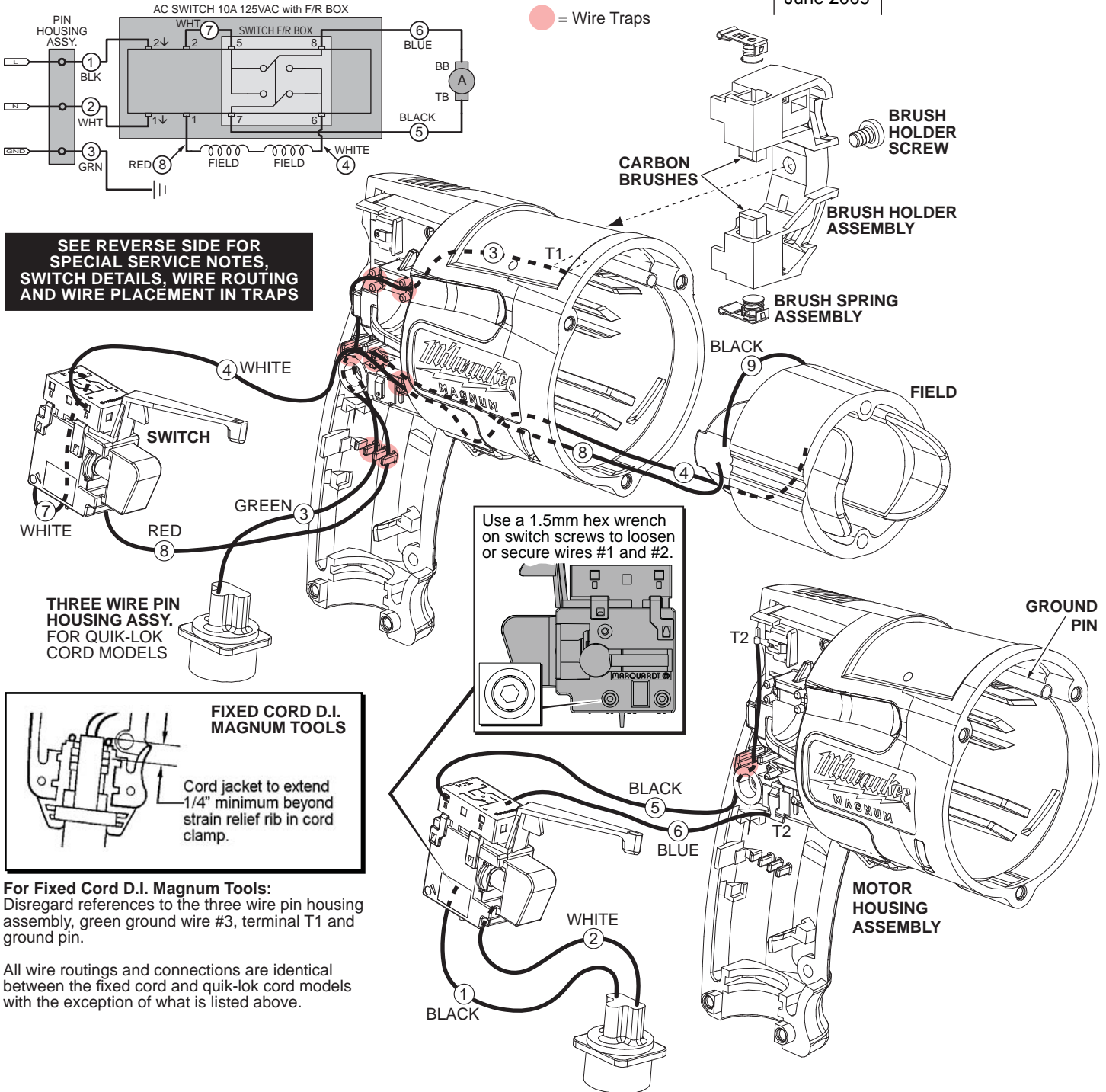
TITLE

**MAGNUM TOOLS**

**MILWAUKEE ELECTRIC TOOL CORP. 13135 WEST LISBON RD. BROOKFIELD, WIS.**

DATE  
June 2009

**BULLETIN  
58-01-1651**



**SEE REVERSE SIDE FOR SPECIAL SERVICE NOTES, SWITCH DETAILS, WIRE ROUTING AND WIRE PLACEMENT IN TRAPS**

**For Fixed Cord D.I. Magnum Tools:**  
Disregard references to the three wire pin housing assembly, green ground wire #3, terminal T1 and ground pin.

All wire routings and connections are identical between the fixed cord and quik-lok cord models with the exception of what is listed above.

## WIRING SPECIFICATIONS

Wire No.	Wire Color	Origin or Part No.	Gauge	Length	Terminals, Connectors and End Wire Preparation
1	Black	Cord	18	----	Component of Pin Housing Assembly 22-56-0845.
2	White	Cord	18	----	Component of Pin Housing Assembly 22-56-0845.
3	Green	Cord	18	----	Component of Pin Hsg. Assy. 22-56-0845. Strip 3/16" for T1.
4	White	Field	18	5-3/4"	Component of Field 18-11-0076. Strip 5/16" and tin.
5	Black	23-94-6336	18	4-1/2"	Strip 3/16" for T2. Strip 3/16" and tin.
6	Blue	23-94-6248	18	1-3/4"	Strip 3/16" for T2. Strip 3/16" and tin.
7	White	23-94-6405	18	2-7/8"	Strip both ends 3/16" and tin.
8	Red	Field	18	5-3/4"	Component of Field 18-11-0076. Strip 5/16" and tin.
9	Black	Field Jumper	18	----	Component of Field 18-11-0076.

**BULK LEAD WIRE - BULLETIN 58-01-0003**

**NOTE:**

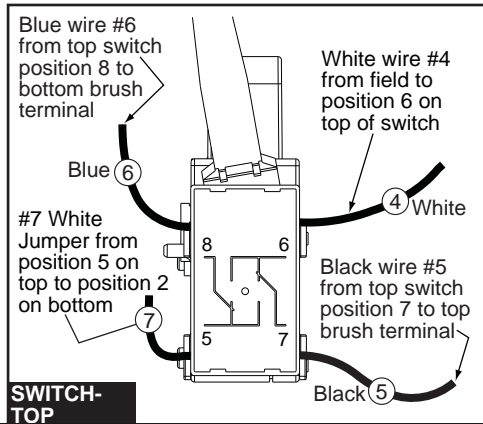
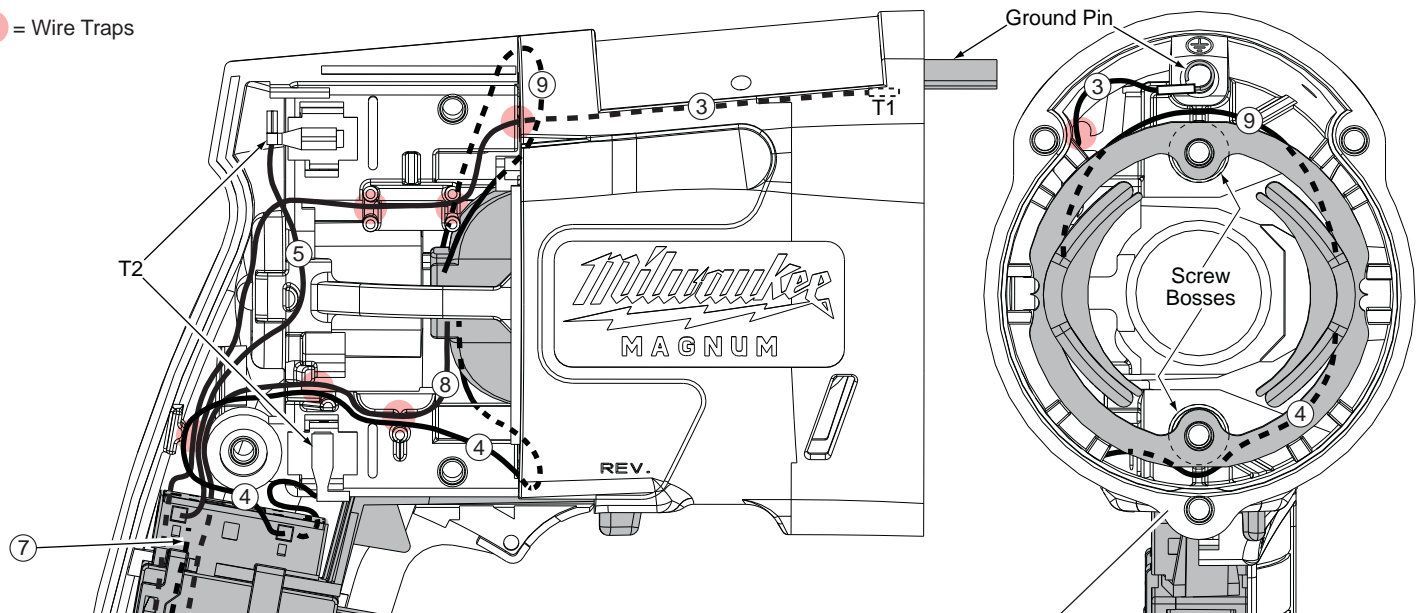
All leads must be held to ± 1/8".  
All lead lengths are before stripping.

**TERMINAL DESCRIPTION**

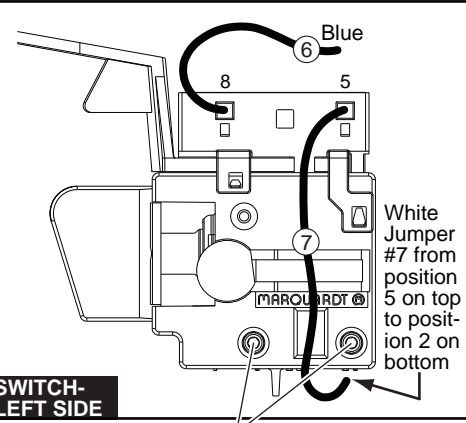
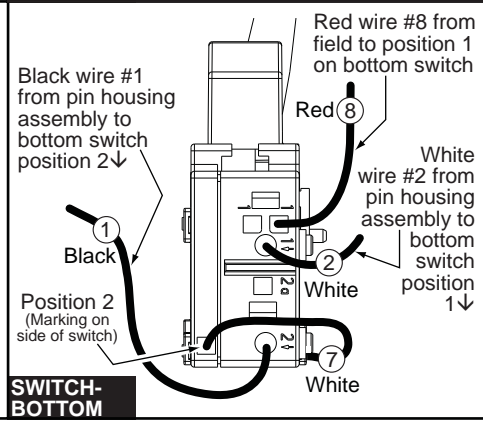
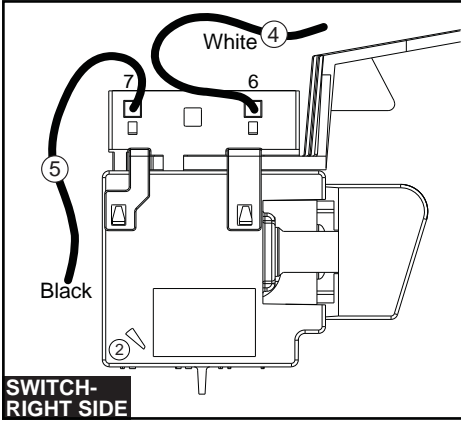
	Part No.	Qty.
T1	23-74-0615	1
T2	23-74-1100	2

**CONNECTOR DESCRIPTION**

● = Wire Traps



Route black field wire #9 and white field wire #4 around screw bosses in motor housing as shown. Be sure that those wires are not trapped or pinched when securing the field.



**WIRING SPECIFICATIONS**

Wire No.	Wire Color	Origin or Part No.	Gauge	Length	Terminals, Connectors and End Wire Preparation
1	Black	Cord	18	-----	Component of Pin Housing Assembly 22-56-0845.
2	White	Cord	18	-----	Component of Pin Housing Assembly 22-56-0845.
3	Green	Cord	18	-----	Component of Pin Hsg. Assy. 22-56-0845. Strip 3/16" for T1.
4	White	Field	18	5-3/4"	Component of Field 18-11-0076. Strip 5/16" and tin.
5	Black	23-94-6336	18	4-1/2"	Strip 3/16" for T2. Strip 3/16" and tin.
6	Blue	23-94-6248	18	1-3/4"	Strip 3/16" for T2. Strip 3/16" and tin.
7	White	23-94-6405	18	2-7/8"	Strip both ends 3/16" and tin.
8	Red	Field	18	5-3/4"	Component of Field 18-11-0076. Strip 5/16" and tin.
9	Black	Field Jumper	18	-----	Component of Field 18-11-0076.

**BULK LEAD WIRE - BULLETIN 58-01-0003**

Use a 1.5mm hex wrench on switch screws to secure or loosen cord wires #1 & #2 (See detail on front).

**NOTE:**  
All leads must be held to ± 1/8".  
All lead lengths are before stripping.

TERMINAL DESCRIPTION		
	Part No.	Qty.
T1	23-74-0615	1
T2	23-74-1100	2
CONNECTOR DESCRIPTION		

For Fixed Cord D.I. Magnum Tools: Disregard references to the three wire pin housing assembly, green ground wire #3, terminal T1 and ground pin. All wire routings and connections are identical between the fixed cord and quik-lok cord models with the exception of what is listed above.