

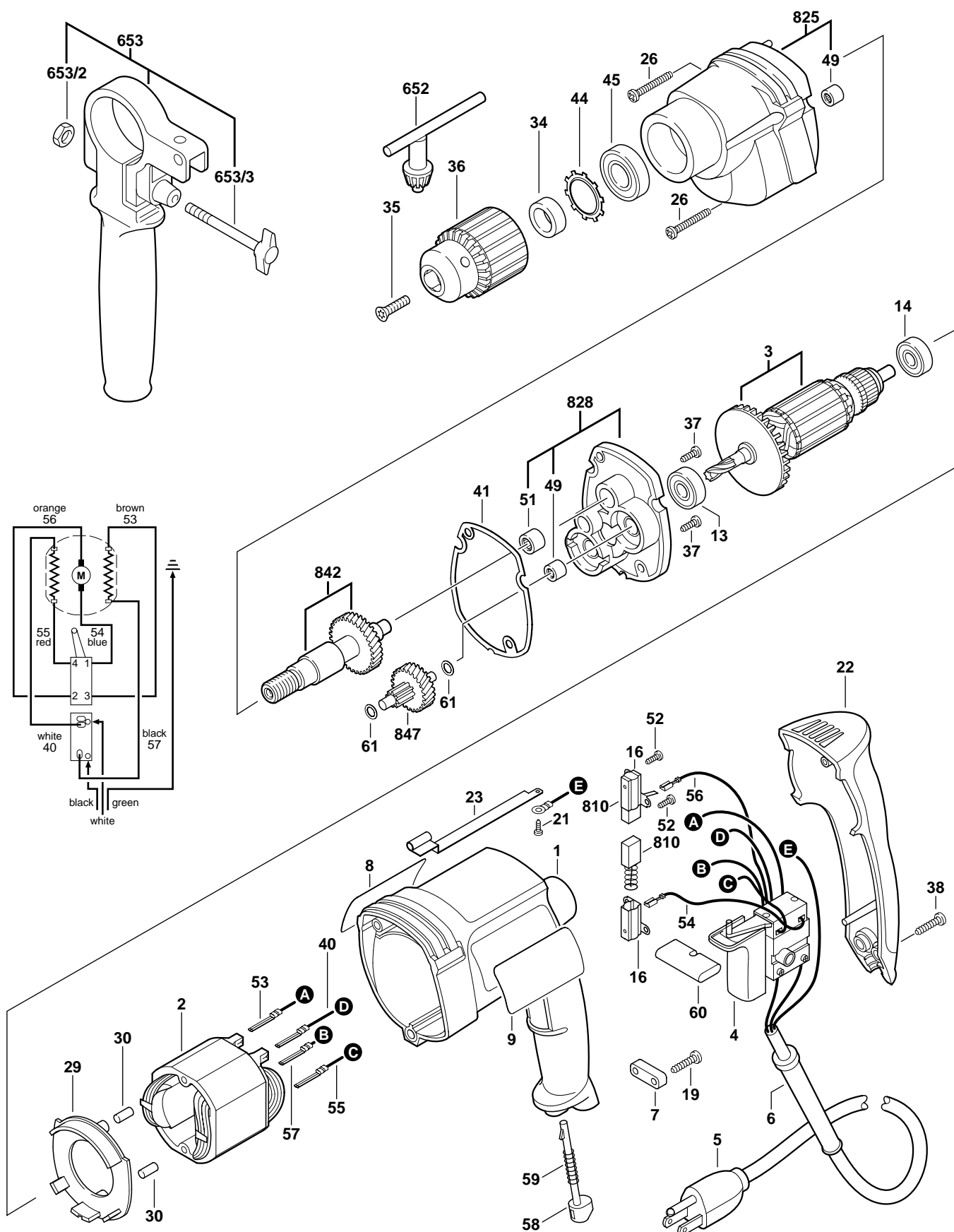
January 2000

INDUSTRIAL

3/8" DRILL

Model 0601046639

1030VSR



1030VSR 3/8" DRILL

Pos.	Part Number	Description {Qty.}	F/C	Pos.	Part Number	Description {Qty.}	F/C
1	2 610 998 100	Motor Housing	71	45	2 610 968 044	Ball Bearing	56
2	2 610 998 129	Field	22	49	2 600 914 010	Needle Bearing {2}	56
3	2 610 998 112	Armature w/Fan	AW	51	1 600 910 018	Needle Bearing	56
4	2 610 998 107	Switch VSR	17	52	2 910 611 405	Screw {4}	89
5	2 610 998 127	Cord	11	53	2 610 998 133	Cable	10
6	2 600 703 013	Strain Relief	11	54	2 610 998 134	Cable	10
7	2 601 035 001	Cord Clamp	89	55	2 610 998 135	Cable	10
8	2 610 998 432	Nameplate	9	56	2 610 998 136	Cable	10
9	2 610 998 418	Lable "Bosch"	9	57	2 610 998 137	Cable	10
13	2 610 351 861	Ball Bearing	60	58	2 610 998 114	Lock-On Lever	64
14	1 900 905 018	Ball Bearing	61	59	2 610 998 116	Spring	27
16	2 604 337 003	Brush Holder {2}	25	60	2 610 998 113	Reversing Lever	64
19	2 610 315 386	Screw {2}	89	61	2 600 100 607	Shim 0.3mm {2}	65
21	2 610 907 525	Screw	89	+ 651	2 610 304 790	Key Holder	9
22	2 610 998 102	Handle Cover	74	652	3 608 571 539	Chuck Key	9
23	2 610 998 118	Grounding Strap	10	653	2 602 025 094	Handle Assmebly	74
26	2 910 615 082	Screw {3}	89		w/pos. 653/2, 653/3		
29	2 610 998 115	Baffle	24	653/2	2 915 011 007	Nut	89
30	3 602 391 503	Rubber Buffer {2}	66	653/3	1 613 480 007	Wing Screw	89
34	2 610 998 132	Spacer	82	810	2 604 321 914	Brush Set	26
35	2 610 346 444	Reversing Screw LH	85	825	2 610 998 143	Gear Housing Assembly	72
36	2 610 350 947	3/8" Keyed Chuck	91		w/pos. 49		
37	2 914 411 045	Screw {2}	89	828	2 610 998 153	Intermediate Plate Assy.	38
38	2 910 615 022	Screw {3}	89		w/pos. 49, 51		
40	2 610 998 138	Cable	10	842	2 610 907 369	Spindle w/Gear Assembly	32
41	2 610 998 117	Gasket	79	847	2 610 998 148	Intermediate Gear Assy.	31
44	2 610 998 128	Retaining Ring	89				

Service Notes:

