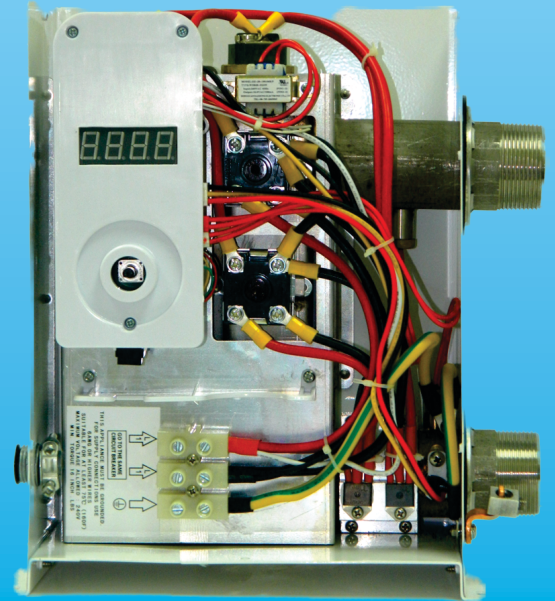


Electric Spa Heaters | Smart SPA Series

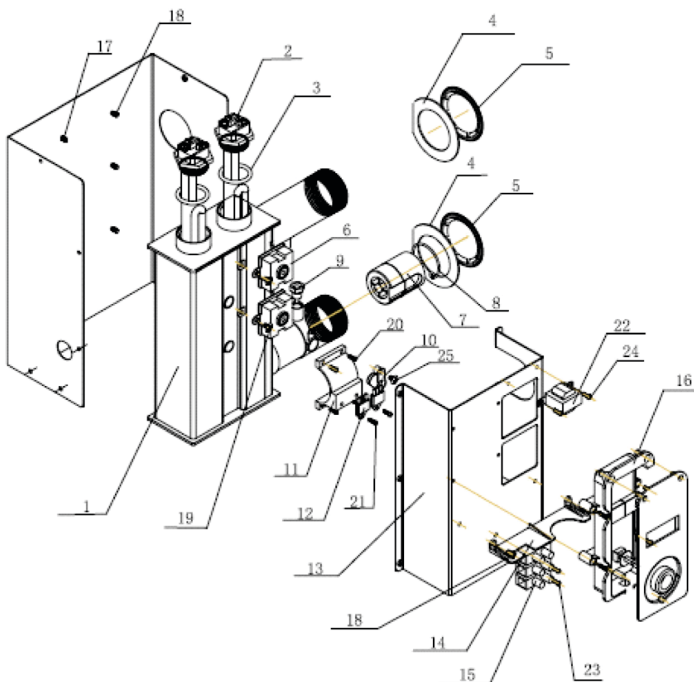
Technical Data



Interior View of Smart SPA 11

Model	Voltage	Phase	kW	Equivalent BTU	Max Amps	Plumbing Connection	Dimensions H" x W" x D"	Weight
Smart SPA 5.5	220-240	Single	5.5	18,750	25	1.5"	12 x 10.5 x 4.75	14.25
Smart SPA 11	220-240	Single	11	37,560	50	1.5"	12 x 10.5 x 4.75	14.25

Smart Spa 11 Parts Diagram

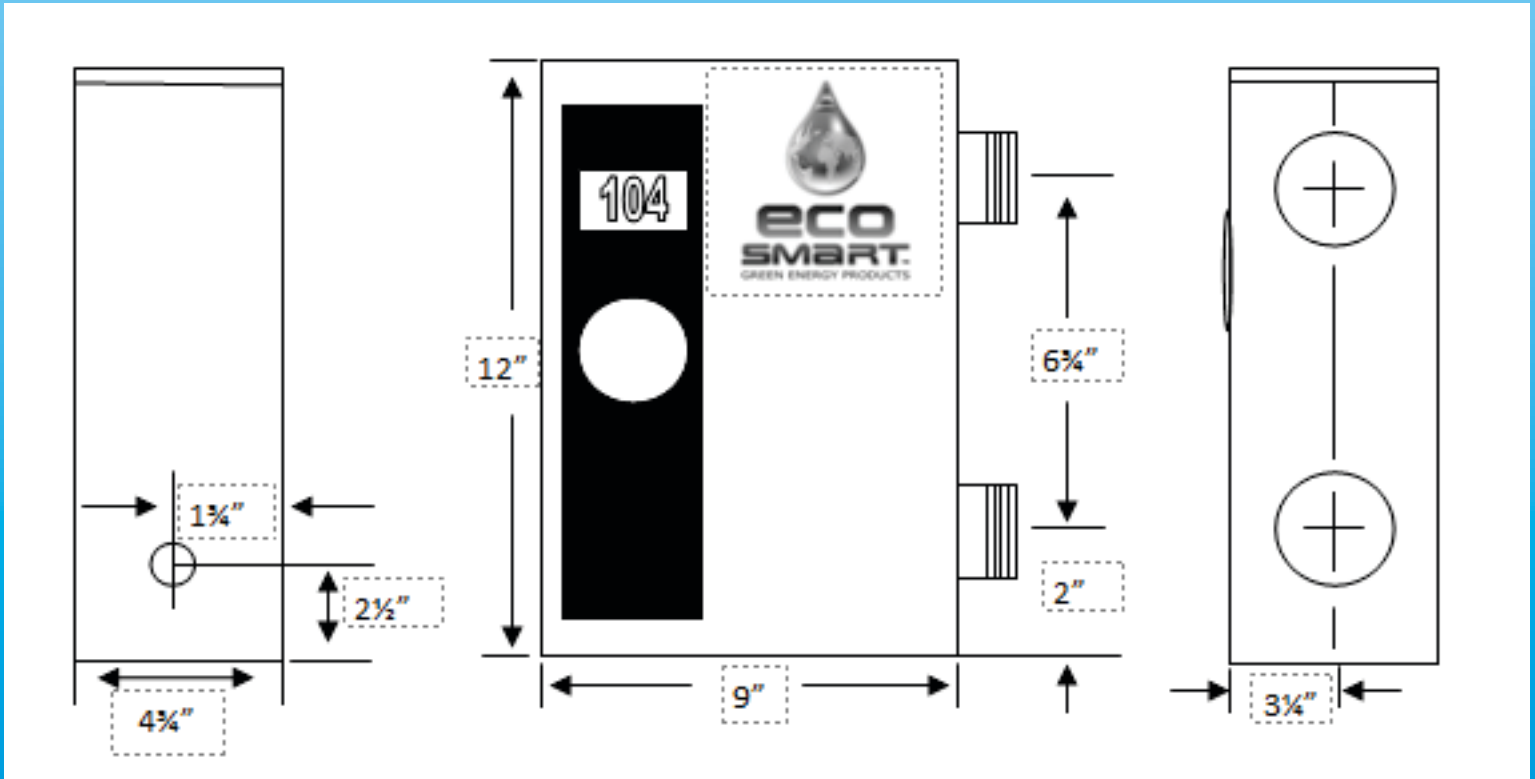


1	Heat Exchanger	12	Triac
2	Heating Elements	13	Aluminum Bracket
3	Gasket Rings	14	Ground Terminal Block
4	Inlet / Outlet Gasket	15	Terminal Block
5	Inlet / Outlet Fitting	16	Circuit Board Holder
6	Thermostats	17	Stainless Steel Screw M 4x12
7	Flow Sensor	18	Stainless Steel Screw M 4x10
8	Flow Sensor Fitting	19	Stainless Steel Screw M 4x6
9	Thermistor	20	Stainless Steel Screw M 4x10
10	Flow Sensor/Hall Effect	21	Stainless Steel Screw M 4x8
11	Cooling Plate		

Electric Spa Heaters | Smart SPA Series

Technical Data

Spacing Dimensions

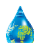







Basic Sizing Information

Model	Spa Size W' x L' x D'	Gallons	Recommended Ecosmart Heater	Max. Gallons
Smart SPA 5.5	6'8" Octagon	300	Smart SPA 5.5	400
Smart SPA 11	8' Octagon	500	Smart SPA 11	1000

*For more sizing information please see "Sizing Charts."

Product Features

-  **Stainless Steel Elements with 3/16" Brass Heads**
-  **Stainless Steel Water Tank - No Expansion**
-  **NO Relays or Contactors. Flow sensor Activation with microprocessing technology.**
-  **1 1/2" Inlet and Outlet Water Connection - Easy Installation**
-  **99.8% Energy Efficient.**
-  **Digital Temperature Control**



Intertek

ETL Listed to UL 1261 & CSA

Quality Assurance

100% Testing of all units-All units are tested simulating its intended use with both water and electrical connections to ensure a trouble free out of the box experience.

ETL Listed to UL 1261 / CSA STD. ISO 9001 registered manufacturer