



# SERVICE PARTS LIST

**BULLETIN NO.**  
**54-07-2200**

SPECIFY CATALOG NO. AND SERIAL NO. WHEN ORDERING PARTS		REVISED BULLETIN	DATE
<b>DIGITAL MULTIMETER</b>			June 2009
<b>CATALOG NO.</b>	<b>2217-20</b>	<b>SERIAL NUMBER</b>	<b>B83A</b>
WIRING INSTRUCTION			

**EXAMPLE:**  

00	0
----	---

 Component Parts (Small #) Are Included  
 When Ordering The Assembly (Large #).

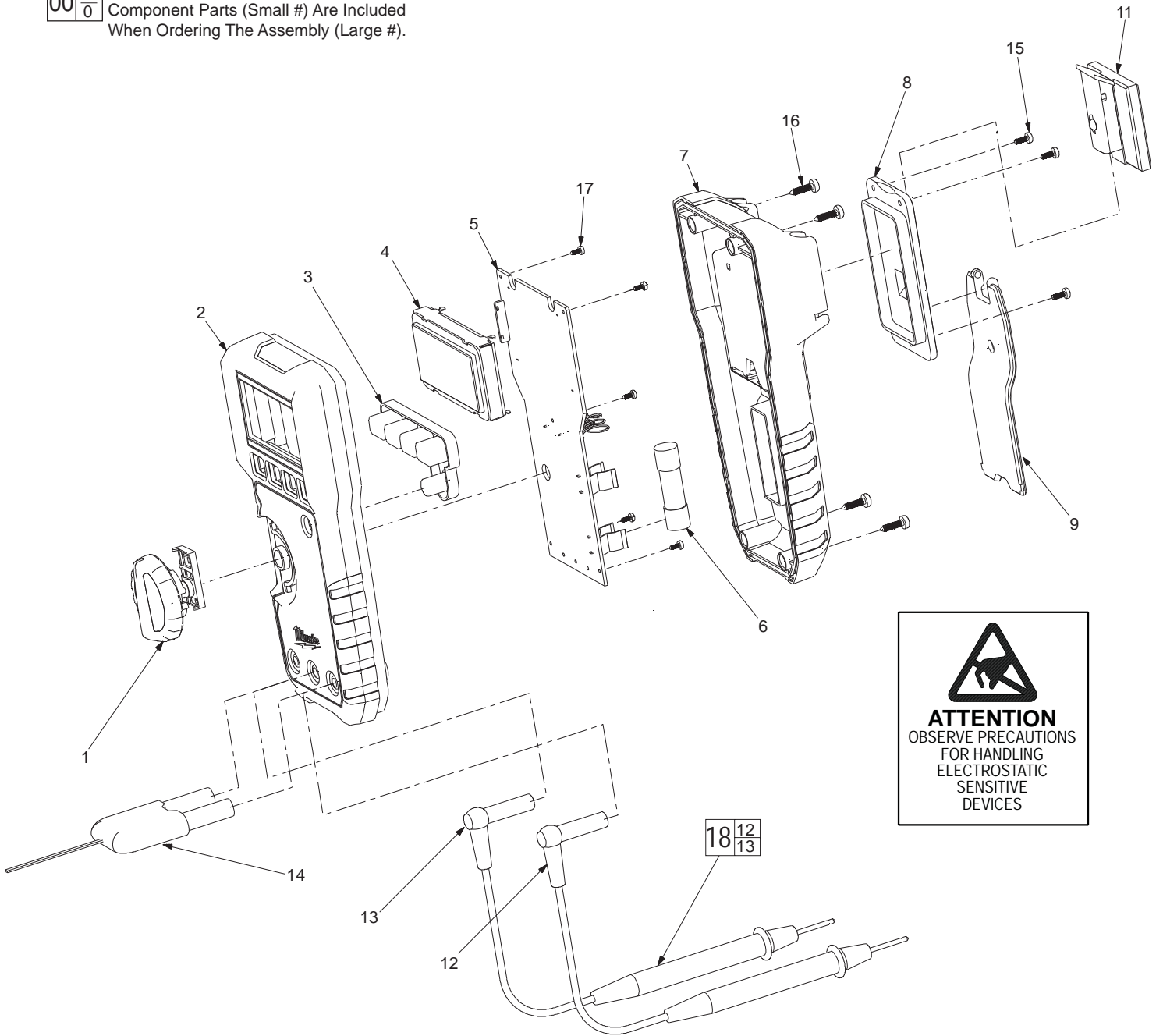


FIG.	PART NO.	DESCRIPTION OF PART	NO. REQ.
1	23-66-0545	Rotary Switch	(1)
2	31-50-0380	Top Case	(1)
3	42-42-0900	Rubber Keypad	(1)
4	44-06-0070	LCD Module	(1)
5	22-06-0140	Main PCA	(1)
6	22-89-0300	Fuse	(1)
7	31-50-0385	Bottom Case	(1)
8	31-21-0035	Battery Door	(1)
9	31-70-0155	Bale, DMM Stand	(1)
11	49-77-3001	Magnet	(1)
12	-----	Red Test Lead	(1)
13	-----	Black Test Lead	(1)
14	49-77-2001	K-Type Thermocouple	(1)
15	05-81-0260	Battery Door Screw	(3)
16	05-81-0265	Bottom Case Screw	(4)
17	05-81-0270	PCA Screw	(5)
18	49-77-1002	Test Lead Set (Contains 12 & 13)	(1)

**MILWAUKEE ELECTRIC TOOL CORPORATION**  
 13135 W. LISBON RD., BROOKFIELD, WI 53005  
 Drwg. 2