

16" X 24" CNC CARVING MACHINE

— MODEL EC-617 M1 —



Excalibur by General International with MASSO Controller

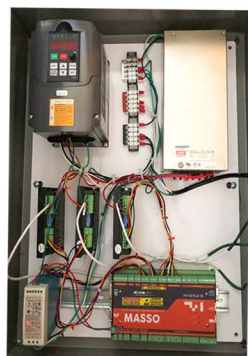
New!

INCLUDES
INTEGRATED
COMMERCIAL
STEPPER
MOTOR/
ROUTER

WITH
WIFI

EC-617 M1 Includes

- **New!** Renowned Excalibur By General International design expertise now available in CNC technology.
- Control Panel Steel enclosure Included. Masso HTG5A15 upgradeable Controller includes Masso software. No computer needed! (Requires monitor and USB Keyboard).
- Smooth and accurate ball screw transmission on all axis.
- Powerful 550 watt variable frequency motor for excellent performance and low maintenance.
- Variable cutting up to 118 inches per minute. Spindle speeds up to 24,000 rpm with automatic spindle ON/OFF control.
- Positional accuracy up to +/- 0.004 inches.
- Aluminum table with integrated hold down clamps.



Accessories (Sold Separately)

EC-617X Safety Enclosure
*Optional
(ideal for educational users)

40-928 8 pc. CNC Bit Set

EC-617BSD *Optional Dust collector and stand

Excalibur
BY GENERAL INTERNATIONAL

INCLUDES Electronic Controller

Specifications

X Axis Cutting Capacity	16" (406 mm)
Y Axis Cutting Capacity	24" (610 mm)
Z Axis Cutting Capacity	4" (102 mm)
Positional Accuracy	+/- 0.004" (+/- 102mm)
Overall Dimensions (W x L x H) Machine Only	27-3/4" x 38-1/2" x 27-1/2" (704 x 980 x 700 mm)
Overall Dimensions (W x L x H) With Stand	40-1/8" x 31-1/2" x 55-1/8" (1020x800x1400mm)
Overall Dimensions (W x L x H) With Stand & Enclosure	32-1/4" x 43-14" x 56-1/4" (820 x 1100 x 1430mm)
Spindle Speed	0-24000 tr/min
Spindle / Motor Type	550 watts / variable frequency motor
Table Surface Material	Aluminium
Table Surface Size	36" x 22"
Programming Software Included	MASSO HTG5A Controller.
Cutting Speeds	Variable-Up to 118" per minute
Input Power Requirements	110/115 V-9A
Collets (How Many & Sizes Include)	1 x 1/4" (6mm)
Warranty	1 year - Limited
Weight - Cutting machine/Controller	135/50 lbs (g)